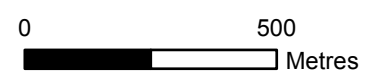


Key

- Proposed Tower Position
- Proposed OHL Alignment
- NSR - Moderate Significance of Effect: Forestry and Tree Clearance

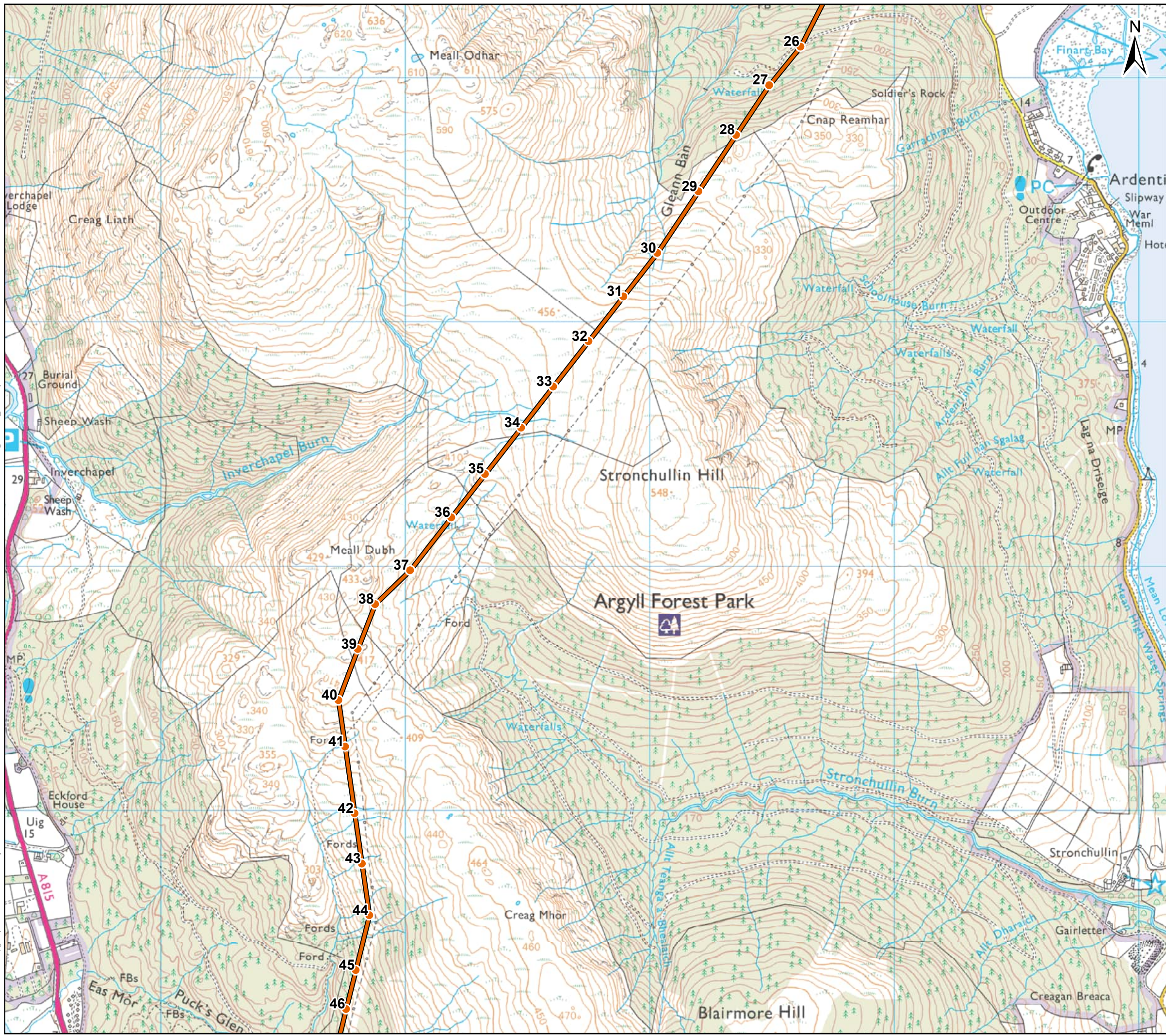


Client: Scottish & Southern Electricity Networks
TRANSMISSION

Project: Dunoon to Loch Long 132kV OHL Rebuild

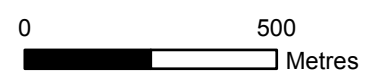
Title: Figure 11.3: Moderate Significance of Effect: Forestry and Tree Clearance
Sheet 1 of 4

Date: 30/11/2022 Scale: 15,000 @ A3
Drawn: HM Checked: AW Approved: SM



Key

- Proposed Tower Position
- Proposed OHL Alignment
- NSR - Moderate Significance of Effect: Forestry and Tree Clearance



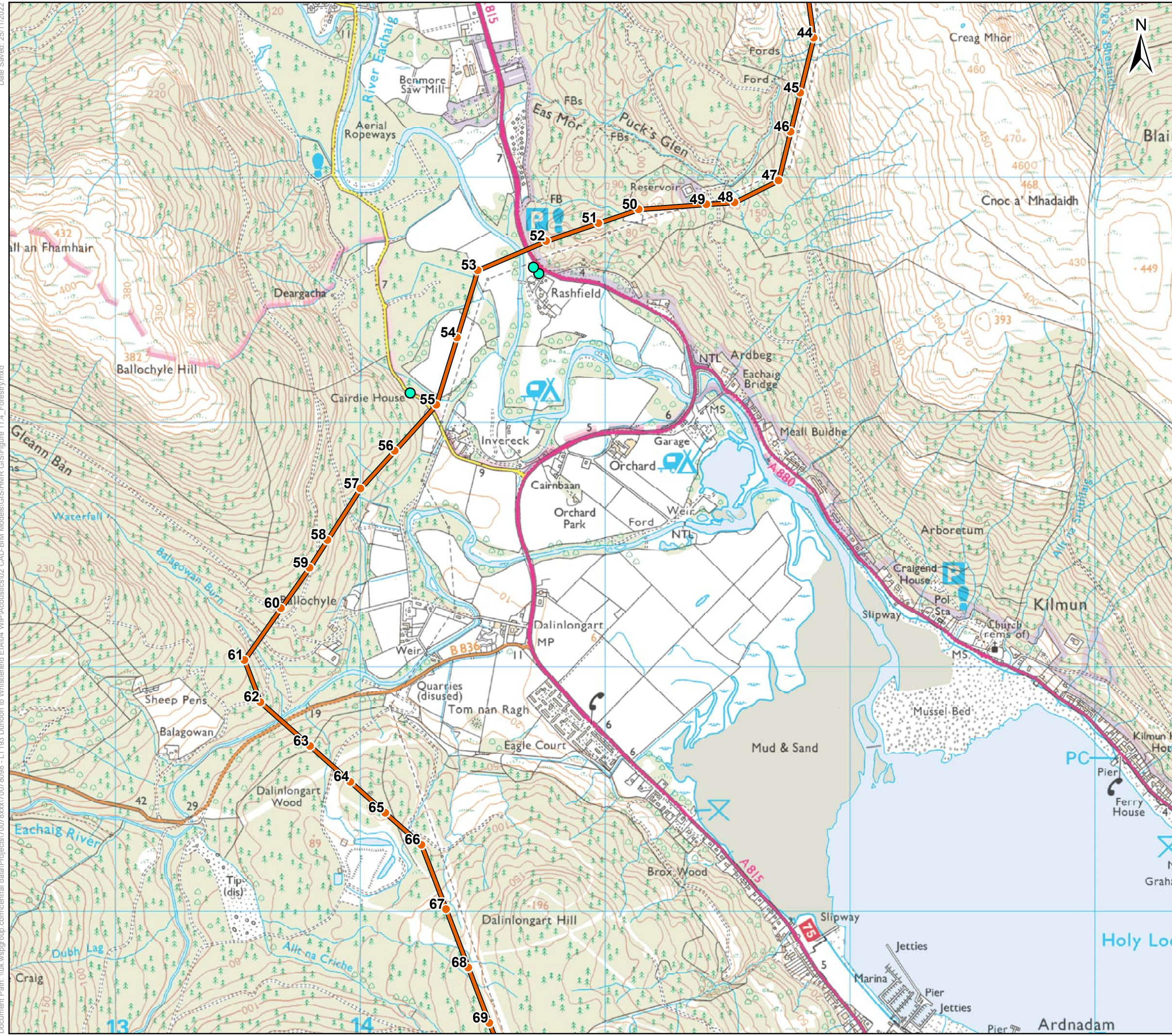
Client: **Scottish & Southern**
Electricity Networks

TRANSMISSION

Project: Dunoon to Loch Long 132kV OHL Rebuild

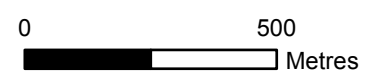
Title: Figure 11.3: Moderate Significance of Effect: Forestry and Tree Clearance
Sheet 2 of 4

Date: 30/11/2022 Scale: 15,000 @ A3
Drawn: HM Checked: AW Approved: SM



Key

- Proposed Tower Position
- Proposed OHL Alignment
- NSR - Moderate Significance of Effect: Forestry and Tree Clearance

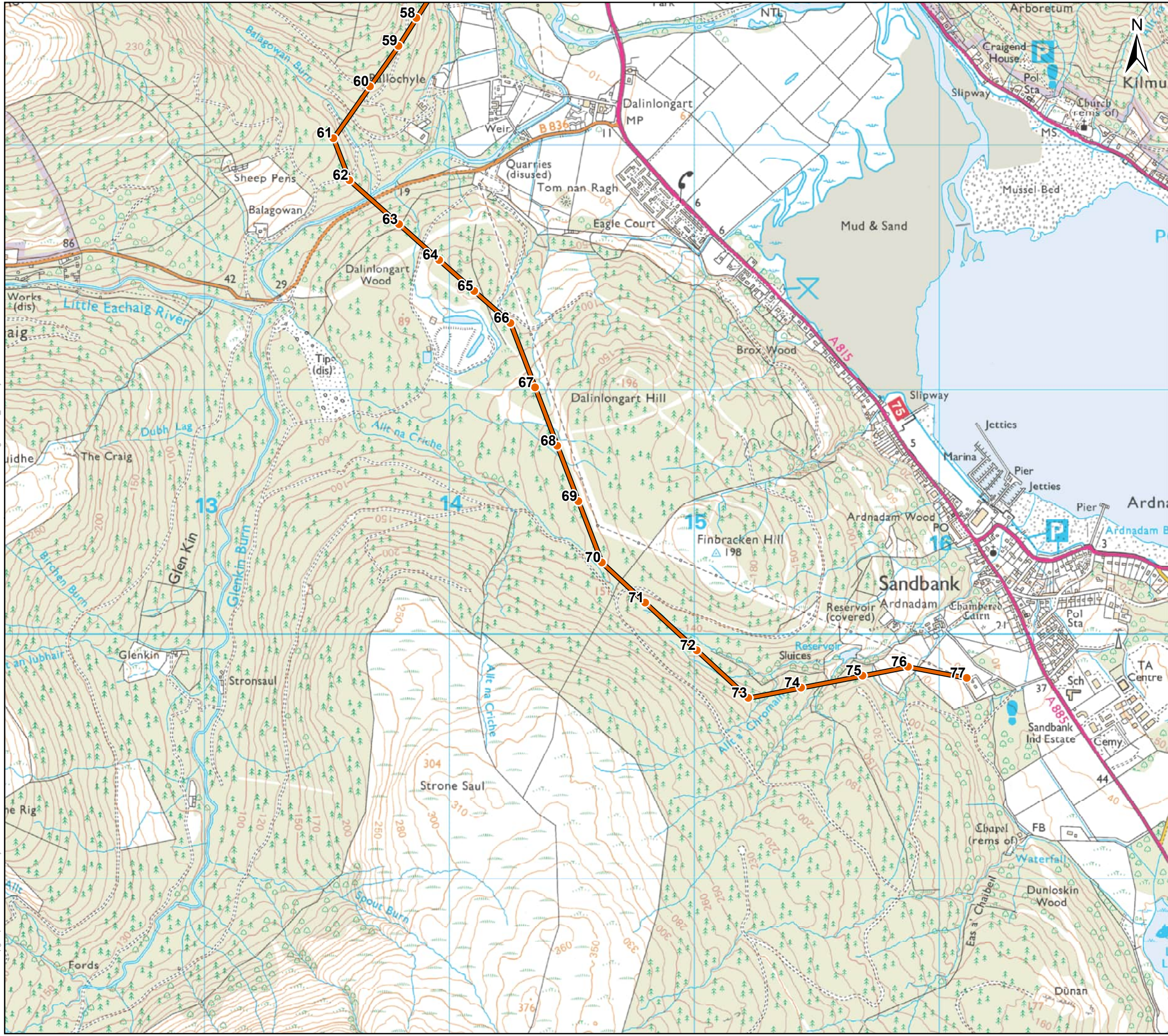


Client: Scottish & Southern Electricity Networks
TRANSMISSION

Project: Dunoon to Loch Long 132kV OHL Rebuild

Title: Figure 11.3: Moderate Significance of Effect: Forestry and Tree Clearance
Sheet 3 of 4

Date: 30/11/2022 Scale: 15,000 @ A3
Drawn: HM Checked: AW Approved: SM



- Key**
- Proposed Tower Position
 - Proposed OHL Alignment
 - NSR - Moderate Significance of Effect: Forestry and Tree Clearance

0 500
Metres



Project: Dunoon to Loch Long 132kV OHL Rebuild

Title: Figure 11.3: Moderate Significance of Effect: Forestry and Tree Clearance
Sheet 4 of 4

Date: 30/11/2022 Scale: 15,000 @ A3
Drawn: HM Checked: AW Approved: SM