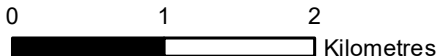


- Key**
- Existing OHL
 - Proposed Tower Position
 - Proposed OHL Alignment
 - ▭ Proposed Development Theoretically Visible *
 - 3km Study Area
 - ▨ Garden and Designed Landscape
 - ▭ Loch Lomond and The Trossachs National Park
 - ▨ Agryll Forest Park Extents
- NatureScot Landscape Character Types**
- ▭ Open Ridges
 - ▭ Settled Coastal Fringe
 - ▭ Steep Ridges and Hills
 - ▭ Steep Ridges and Mountains
 - ▭ Straths and Glens
 - ▭ Straths and Glens with Lochs
 - ▭ Upland Glens - Loch Lomond & the Trossachs

* Refer to Figure 6.2, Zone of Theoretical Visibility for more detailed plans, showing the theoretical visibility of the proposed OHL.

The ZTV is calculated based on the OHL tower height and a viewer height of 1.6m above ground level. The terrain model assumes bare ground and is derived from OS Terrain 5 data. Earth curvature and atmosphere refraction have been taken into account.

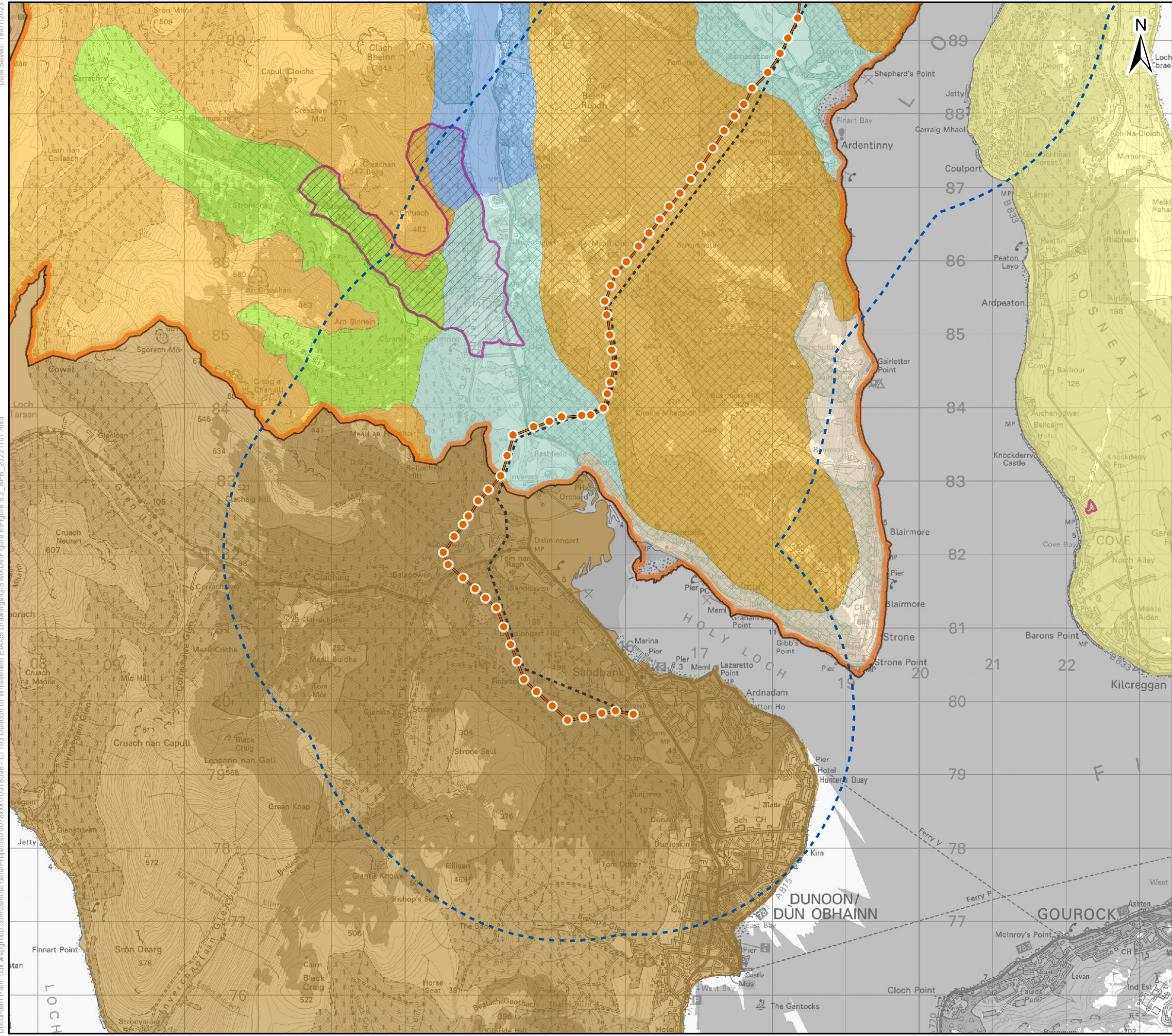


Client:  TRANSMISSION

Project: Dunoon to Loch Long 132kV OHL Rebuild

Title: Fig 6.2 NatureScot National Landscape Character Assessment Page 1 of 2

Date: 18/01/2023 Scale: 50,000 @ A3
 Drawn: AS Checked: IM Approved: JG



Key

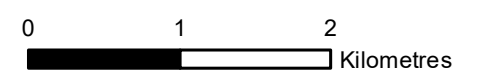
- Existing OHL
- Proposed Tower Position
- Proposed OHL Alignment
- Proposed Development Theoretically Visible *
- 3km Study Area
- ▨ Garden and Designed Landscape
- ▭ Loch Lomond and The Trossachs National Park
- ▨ Agryll Forest Park Extents

NatureScot Landscape Character Types

- Open Ridges
- Settled Coastal Fringe
- Steep Ridges and Hills
- Steep Ridges and Mountains
- Straths and Glens
- Straths and Glens with Lochs
- Upland Glens - Loch Lomond & the Trossachs

* Refer to Figure 6.2, Zone of Theoretical Visibility for more detailed plans, showing the theoretical visibility of the proposed OHL.

The ZTV is calculated based on the OHL tower height and a viewer height of 1.6m above ground level. The terrain model assumes bare ground and is derived from OS Terrain 5 data. Earth curvature and atmosphere refraction have been taken into account.



Client: TRANSMISSION

Project: **Dunoon to Loch Long 132kV OHL Rebuild**

Title: **Fig 6.2 NatureScot National Landscape Character Assessment**
Page 2 of 2

Date: 18/01/2023 Scale: 50,000 @ A3
 Drawn: AS Checked: IM Approved: JG