

Key

- Existing OHL
- Proposed Tower Position
- Proposed OHL Alignment
- ▭ Proposed Development
- ▭ Theoretically Visible *
- 3km Study Area
- ▭ Loch Lomond and The Trossachs National Park

NatureScot Landscape Character Types

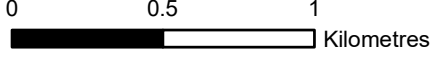
- ▭ Glen Sides
- ▭ Hills
- ▭ Sea Loch Foreshores
- ▭ Sea Loch Shore Fringes
- ▭ Strath and Glen Floors
- ▭ Upland Glens

Landcover

- ▨ Farmed
- ▭ Forested
- ▭ Open
- ▭ Wooded

* Refer to Figure 6.2, Zone of Theoretical Visibility for more detailed plans showing the theoretical, visibility of the proposed OHL.

The ZTV is calculated based on the OHL tower height of proposed new towers and a viewer height of 1.6m above ground level. Tower visibility is cut off at 10km. The terrain model assumes bare ground and is derived from OS Terrain 5 data. Earth curvature and atmosphere refraction have been taken into account.

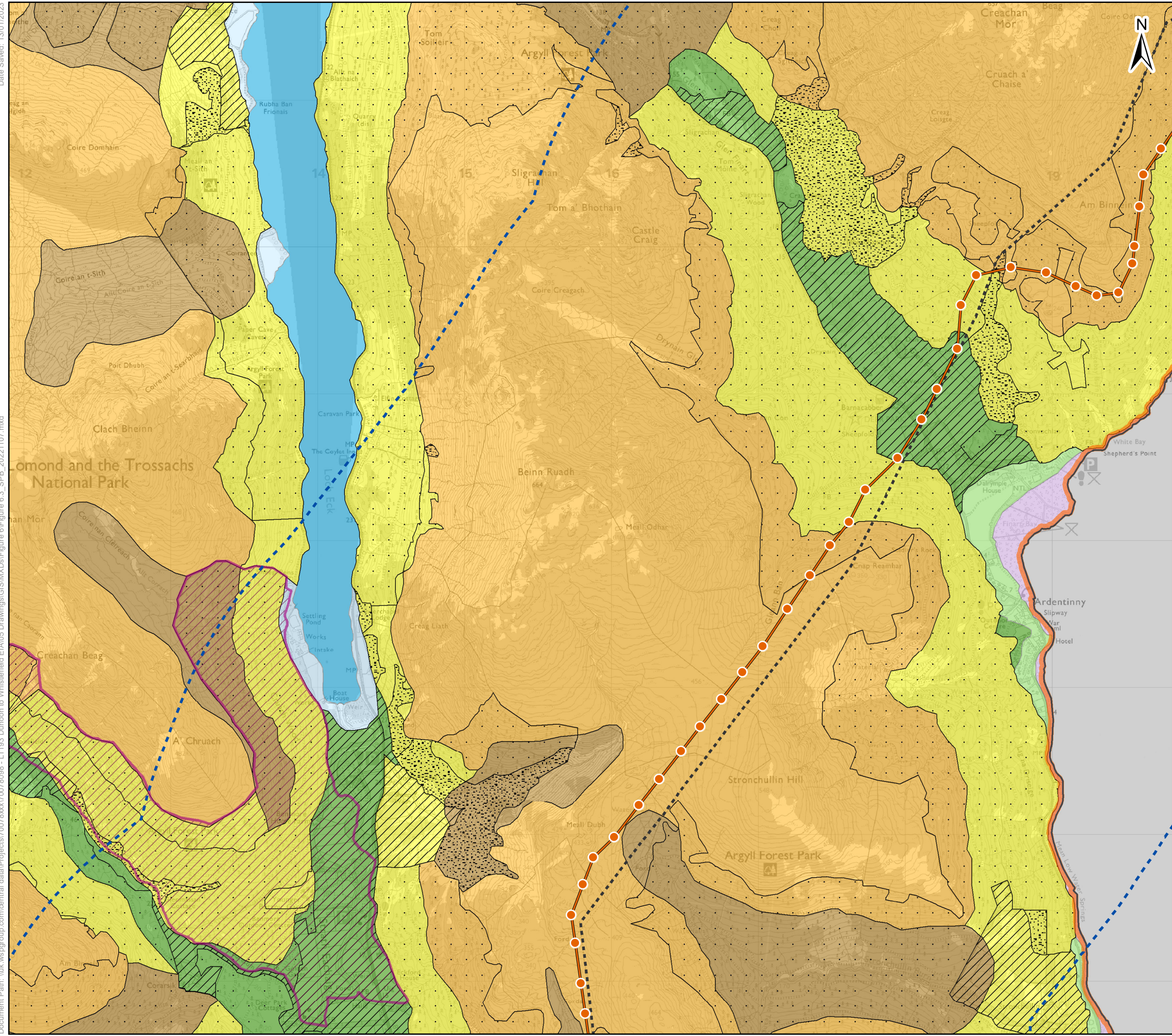


Client: TRANSMISSION

Project: Dunoon to Loch Long 132kV OHL Rebuild

Title: Fig 6.3 LLTNP Landscape Character Types and Landscape Designations Page 1 of 3

Date: 13/01/2023 Scale: 25,000 @ A3
 Drawn: AS Checked: IM Approved: JG



Key

- Existing OHL
- Proposed Tower Position
- Proposed OHL Alignment
- Proposed Development Theoretically Visible *
- 3km Study Area
- ▨ Garden and Designed Landscape
- ▭ Loch Lomond and The Trossachs National Park

NatureScot Landscape Character Types

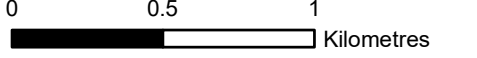
- Glen Sides
- Hills
- Loch Shore Fringes
- Sea Loch Foreshores
- Sea Loch Shore Fringes
- Strath and Glen Floor Lochs
- Strath and Glen Floors
- Upland Glens

Landcover

- ▨ Farmed
- ▨ Forested
- Open
- ▨ Wooded

* Refer to Figure 6.2, Zone of Theoretical Visibility for more detailed plans showing the theoretical, visibility of the proposed OHL.

The ZTV is calculated based on the OHL tower height of proposed new towers and a viewer height of 1.6m above ground level. Tower visibility is cut off at 10km. The terrain model assumes bare ground and is derived from OS Terrain 5 data. Earth curvature and atmosphere refraction have been taken into account.

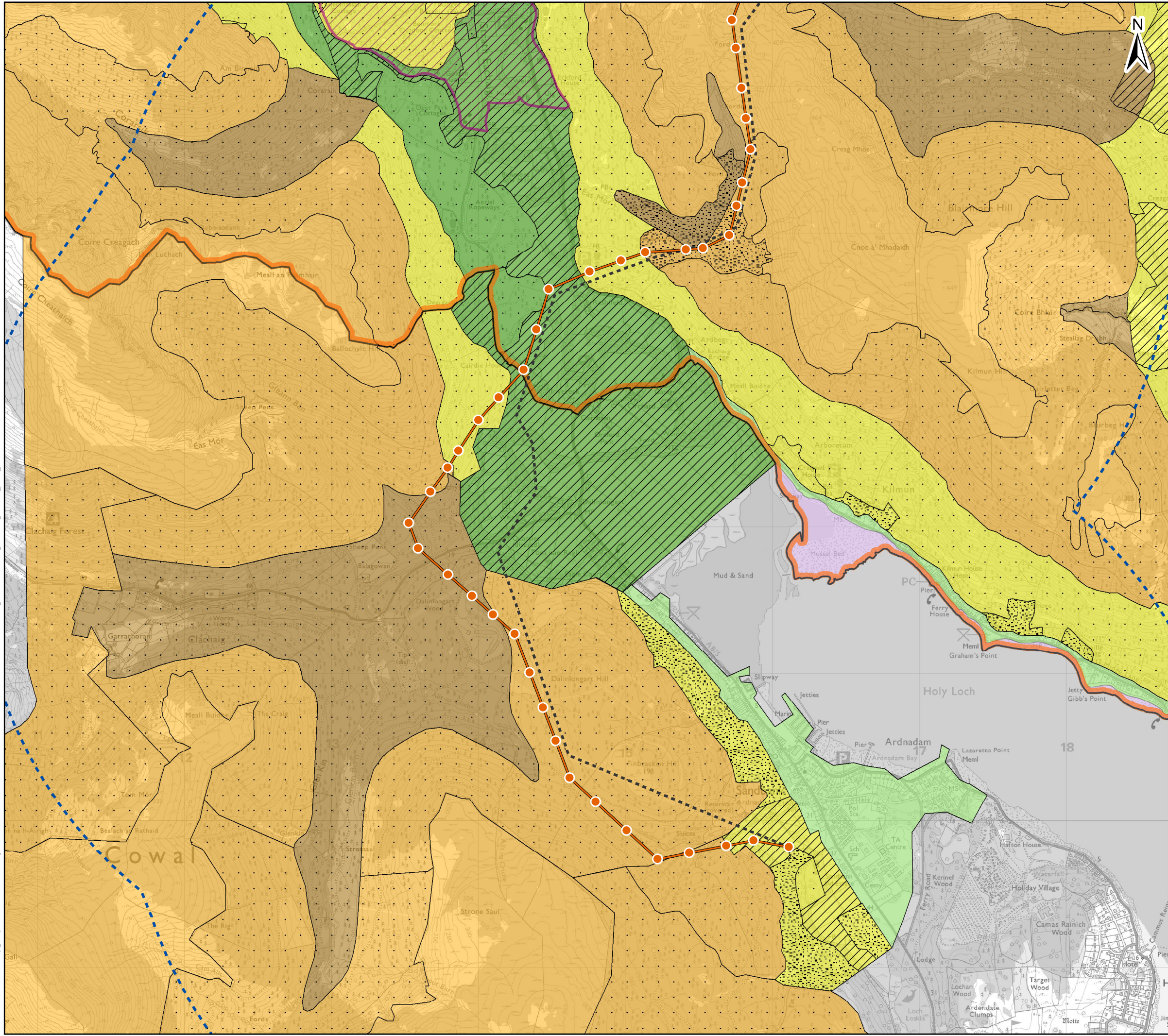


Client: TRANSMISSION

Project: Dunoon to Loch Long 132kV OHL Rebuild

Title: Fig 6.3 LLTNP Landscape Character Types and Landscape Designations Page 2 of 3

Date: 13/01/2023 Scale: 25,000 @ A3
Drawn: AS Checked: IM Approved: JG



Key

- Existing OHL
- Proposed Tower Position
- Proposed OHL Alignment
- Proposed Development Theoretically Visible *
- 3km Study Area
- ▨ Garden and Designed Landscape
- ▭ Loch Lomond and The Trossachs National Park

NatureScot Landscape Character Types

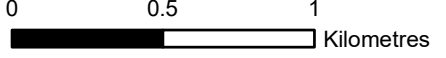
- Glen Sides
- Hills
- Sea Loch Foreshores
- Sea Loch Shore Fringes
- Strath and Glen Floors
- Upland Glens

Landcover

- ▨ Farmed
- Forested
- Open
- ▨ Wooded

* Refer to Figure 6.2, Zone of Theoretical Visibility for more detailed plans showing the theoretical, visibility of the proposed OHL.

The ZTV is calculated based on the OHL tower height of proposed new towers and a viewer height of 1.6m above ground level. Tower visibility is cut off at 10km. The terrain model assumes bare ground and is derived from OS Terrain 5 data. Earth curvature and atmosphere refraction have been taken into account.



Client: TRANSMISSION

Project: Dunoon to Loch Long 132kV OHL Rebuild

Title: Fig 6.3 LLTNP Landscape Character Types and Landscape Designations Page 3 of 3

Date: 13/01/2023 Scale: 25,000 @ A3
 Drawn: AS Checked: IM Approved: JG