

Key

- Existing OHL
- Proposed Tower Position
- Proposed OHL Alignment
- ▭ Proposed Development Theoretically Visible *
- ▲ LLTNP Special Landscape Qualities Viewpoint
- ▲ Viewpoint
- Core Path
- Heritage Path
- Highland Walk
- ▨ Garden and Designed Landscape
- ▭ Scheduled Monument
- ▭ Loch Lomond and The Trossachs National Park

Listed Buildings

CATEGORY

- Cat A
- Cat B
- Cat C

* Refer to Figure 6.2, Zone of Theoretical Visibility for more detailed plans showing the theoretical, visibility of the proposed OHL.

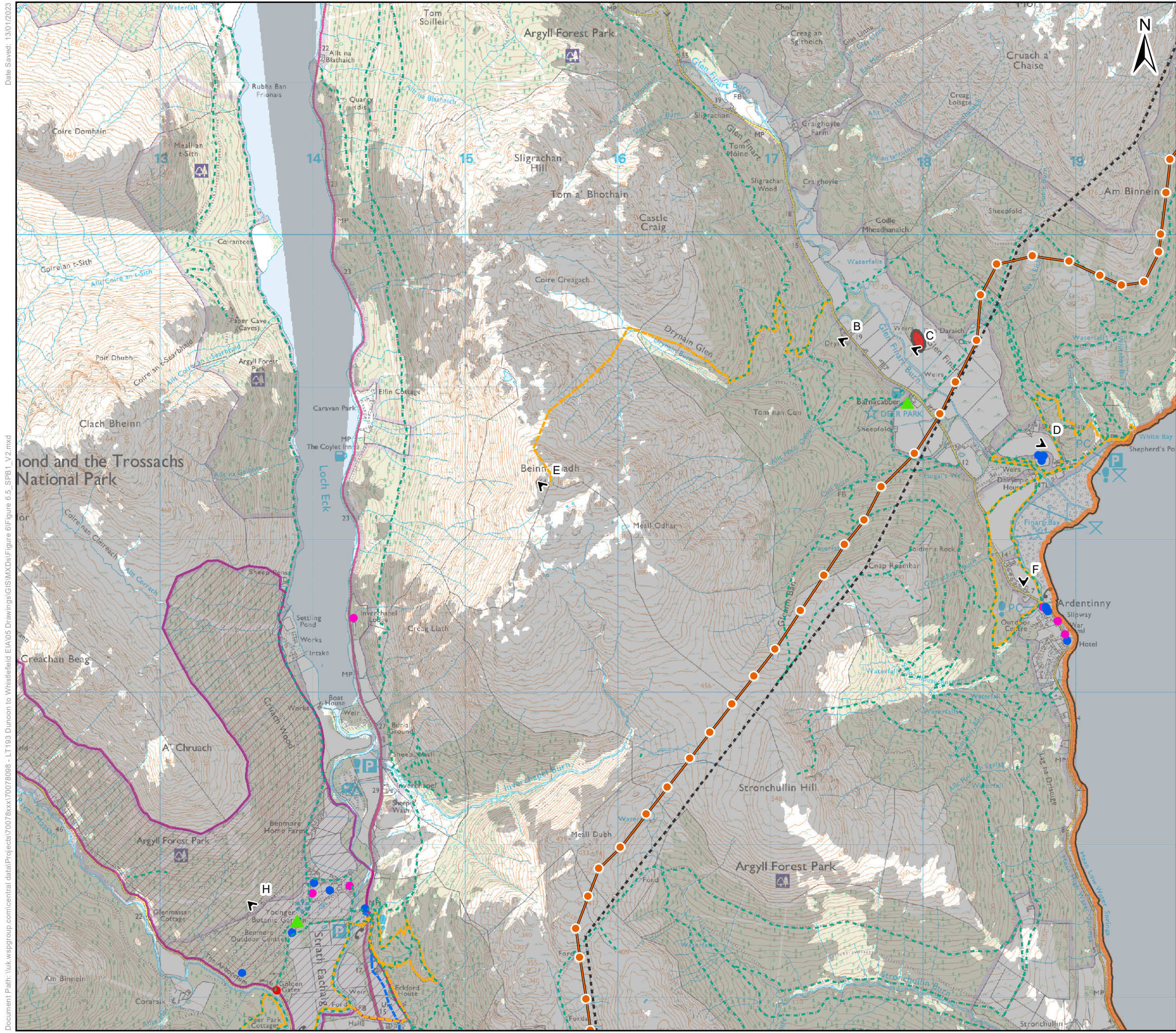
0 0.5 1 Kilometres

Client: TRANSMISSION

Project: Dunoon to Loch Long 132kV OHL Rebuild

Title: Fig 6.5 Visual Receptors Page 1 of 3

Date: 13/01/2023 Scale: 24,000 @ A3
 Drawn: AS Checked: IM Approved: JG



Key

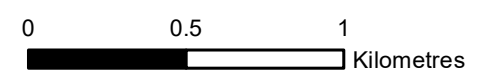
- Existing OHL
- Proposed Tower Position
- Proposed OHL Alignment
- ▭ Proposed Development Theoretically Visible *
- ▲ LLTNP Special Landscape Qualities Viewpoint
- ▲ Viewpoint
- Core Path
- Heritage Path
- Highland Walk
- ▨ Garden and Designed Landscape
- ▭ Scheduled Monument
- ▭ Loch Lomond and The Trossachs National Park

Listed Buildings

CATEGORY

- Cat A
- Cat B
- Cat C

* Refer to Figure 6.2, Zone of Theoretical Visibility for more detailed plans showing the theoretical, visibility of the proposed OHL.

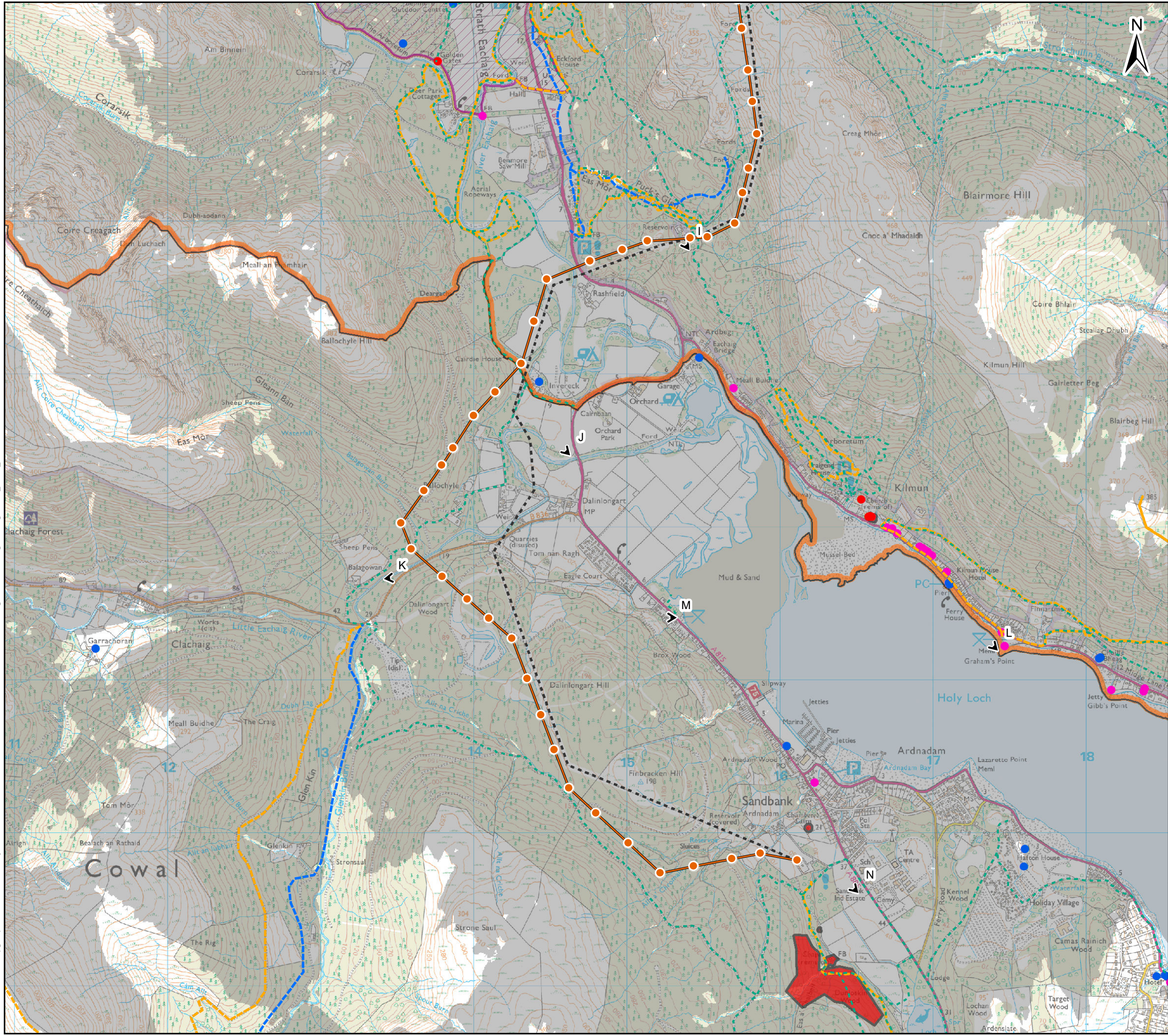


Client: TRANSMISSION

Project: Dunoon to Loch Long 132kV OHL Rebuild

Title: Fig 6.5 Visual Receptors
Page 2 of 3

Date: 13/01/2023 Scale: 24,000 @ A3
 Drawn: AS Checked: IM Approved: JG



Key

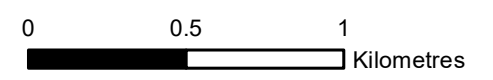
- Existing OHL
- Proposed Tower Position
- Proposed OHL Alignment
- ▭ Proposed Development Theoretically Visible *
- ▲ LLTNP Special Landscape Qualities Viewpoint
- ▲ Viewpoint
- Core Path
- Heritage Path
- Highland Walk
- ▨ Garden and Designed Landscape
- ▭ Scheduled Monument
- ▭ Loch Lomond and The Trossachs National Park

Listed Buildings

CATEGORY

- Cat A
- Cat B
- Cat C

* Refer to Figure 6.2, Zone of Theoretical Visibility for more detailed plans showing the theoretical visibility of the proposed OHL.



Client: TRANSMISSION

Project: **Dunoon to Loch Long 132kV OHL Rebuild**

Title: **Fig 6.5 Visual Receptors**
Page 3 of 3

Date: 13/01/2023 Scale: 24,000 @ A3
 Drawn: AS Checked: IM Approved: JG