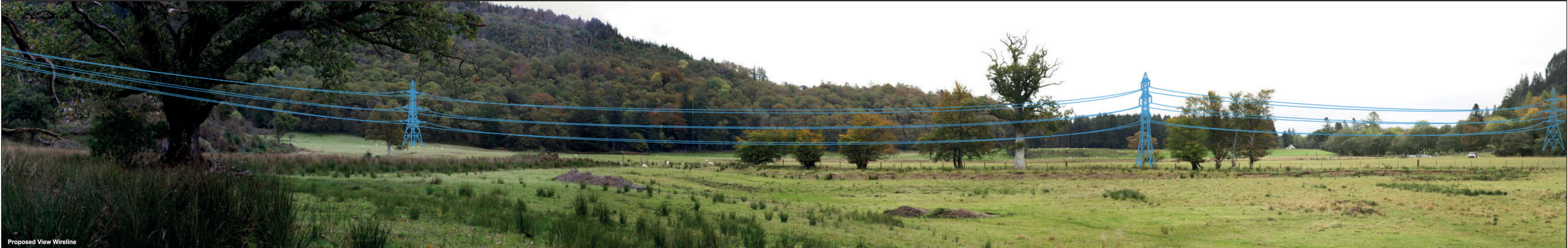





Existing View

This image provides landscape and visual context only



Proposed View Wireline

Viewpoint OS Grid Reference: 218002 689247	Horizontal Field of View: 90° (cylindrical projection)	Photographic Equipment: Canon EOS 6D, 50mm Lens	Paper Size: 841 x 297mm
Viewpoint Elevation: 7m	Nearest Visible Tower: 0.55km	Date and Time Taken: 11/10/2022 11:20	Image Size: 820 x 260mm
Direction of View: 165°	Principal Viewing Distance: 812.5mm	Camera Height: 1.5m AGL	

 Towers and cables



Proposed Development Photomontage

View flat at a comfortable arm's length

Viewpoint OS Grid Reference: 218002 689247	Horizontal Field of View: 90° (cylindrical projection)	Photographic Equipment: Canon EOS 6D, 50mm Lens	Paper Size: 841 x 297mm
Viewpoint Elevation: 7m	Nearest Visible Tower: 0.55km	Date and Time Taken: 11/10/2022 11:20	Image Size: 820 x 260mm
Direction of View: 165°	Principal Viewing Distance: 812.5mm	Camera Height: 1.5m AGL	

Note: The photomontage illustrates the position of the proposed tracks only. It does not show any associated earthworks or upgrades to existing tracks.