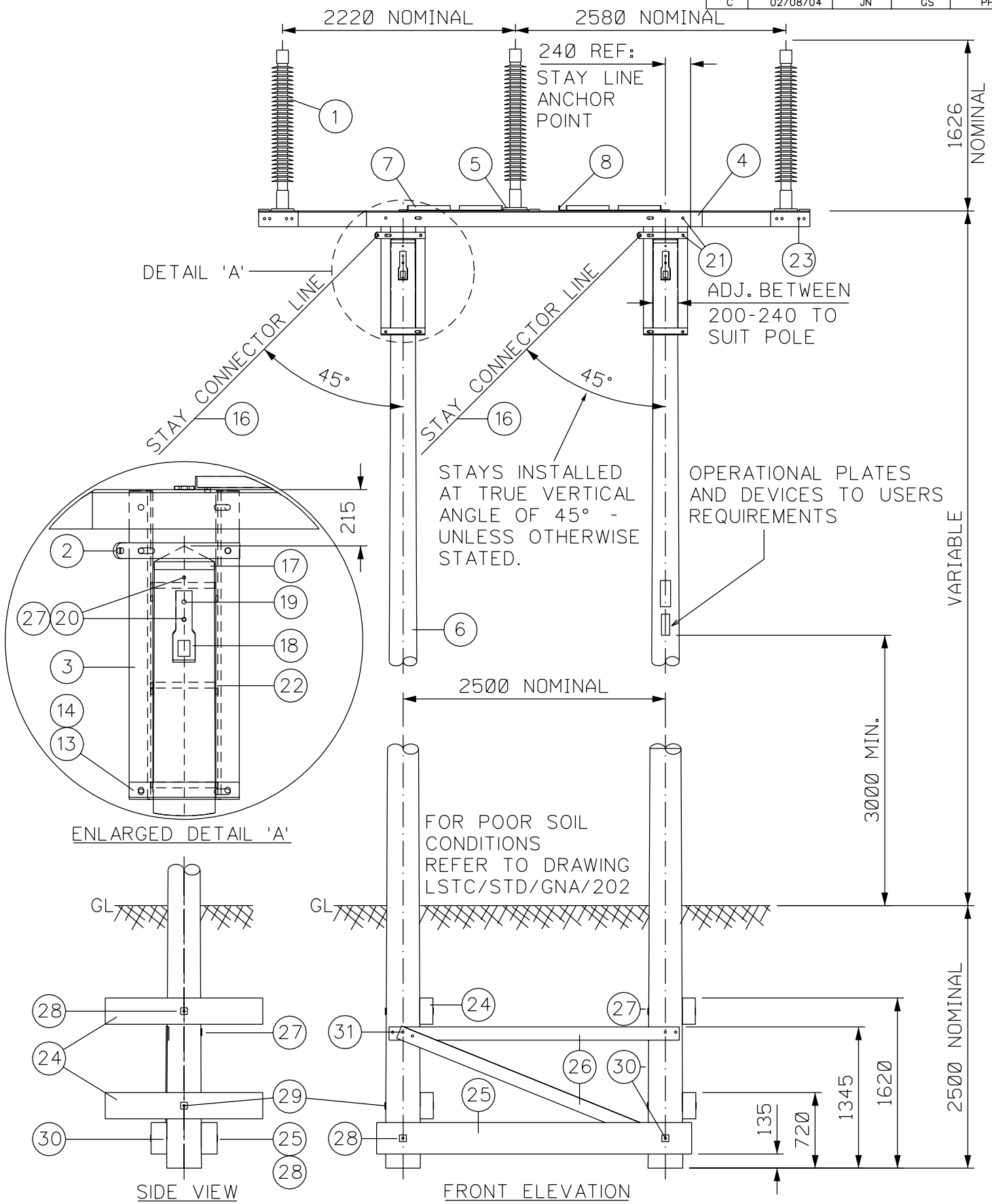


DESCRIPTION		DRAFT ISSUE			
REV B	DATE 23/07/04	BY JN	CHKD GS	APPD PP	
DESCRIPTION DRAFT ISSUE - REDESIGN OF FOUNDATIONS					
REV C	DATE 02/08/04	BY JN	CHKD GS	APPD PP	



GENERAL NOTES

- 1. ALL STEELWORK TO BE PROTOTYPE CHECK ERECTED BEFORE MASS PRODUCTION.
- 2. SAFETY SIGNS INSTALLED TO SSE POWER DISTRIBUTION PROCEDURE PR-PS-325

- 3. DETAILS OF POSITIONS AND MOUNTING HEIGHTS FOR SIGNS AND PLATES TO SSE POWER DISTRIBUTION DRG HO/39/4400 & 4401.
- 4. FOR PLAN VIEW SEE LSTC/STD/GNA/13
- 5. FOR MATERIAL LIST SEE LSTC/STD/GNA/14

CLIENT	SSE POWER DISTRIBUTION
PROJECT	132kV SINGLE CIRCUIT UNEARTHED OVERHEAD LINE

TITLE	TRIDENT 2 POLE UP TO 30° MAX ANGLE STRUCTURE
-------	--

SCALE	1 : 50 (UNLESS OTHERWISE STATED)	ORIGINAL SIZE	A4
DATE	02/08/04	CHECKED	GS
DRAWN	JN	APPROVED	PP
DRAWING NUMBER	LSTC/STD/GNA/12	REV	C

LS TRANSMISSION CONSULTANCY LIMITED
 PADDOCK HOUSE
 10 MIDDLE STREET SOUTH
 DRIFFIELD
 EAST YORKSHIRE YO25 6PT
 TEL: 01377 240047