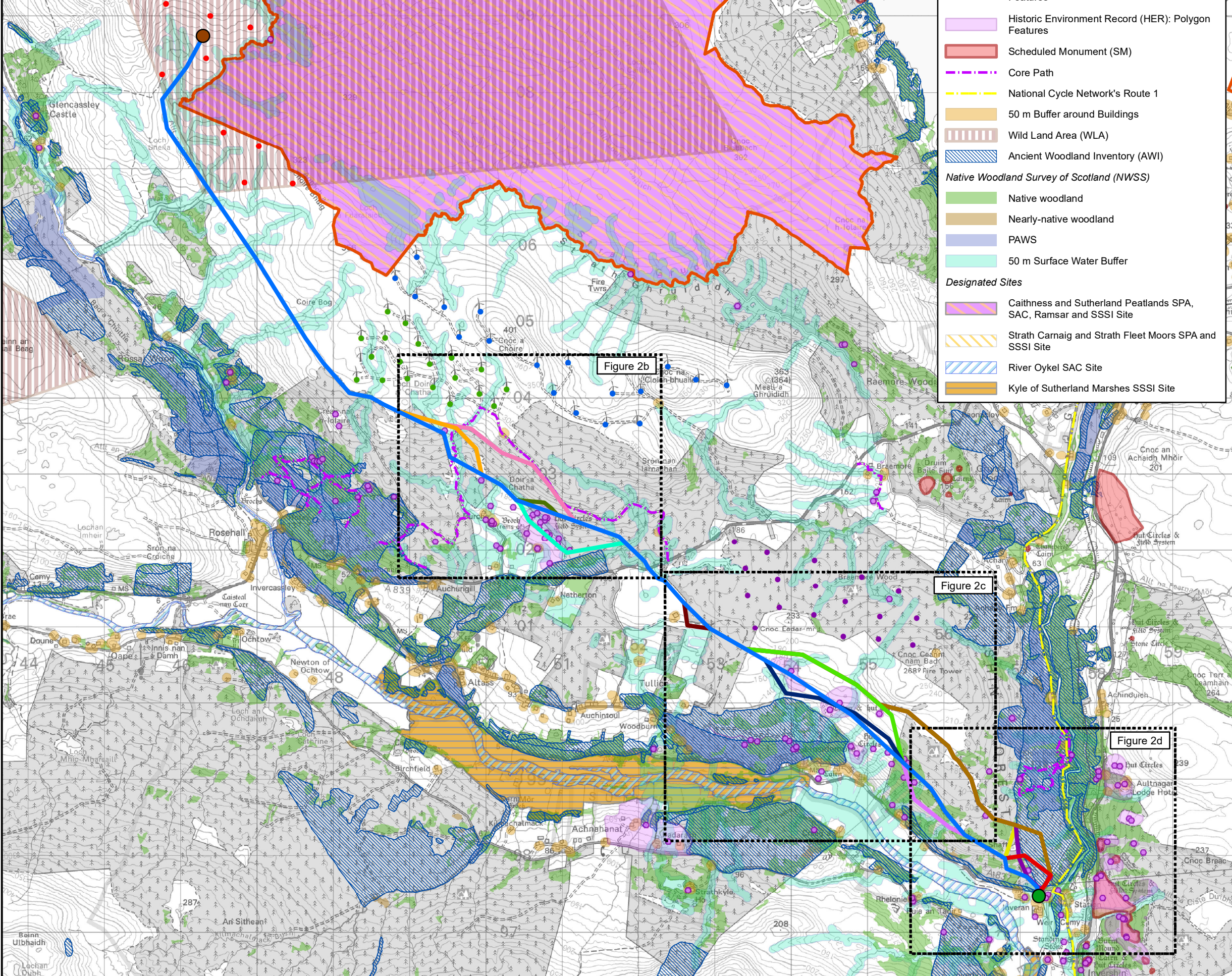


TRANSMISSION



**Constraints**

- Historic Environment Record (HER): Point Features
- Historic Environment Record (HER): Polygon Features
- Scheduled Monument (SM)
- Core Path
- National Cycle Network's Route 1
- 50 m Buffer around Buildings
- Wild Land Area (WLA)
- Ancient Woodland Inventory (AWI)

**Native Woodland Survey of Scotland (NWSS)**

- Native woodland
- Nearly-native woodland
- PAWS
- 50 m Surface Water Buffer

**Designated Sites**

- Caithness and Sutherland Peatlands SPA, SAC, Ramsar and SSSI Site
- Strath Carnaig and Strath Fleet Moors SPA and SSSI Site
- River Oykel SAC Site
- Kyle of Sutherland Marshes SSSI Site

**Legend**

- Shin Substation
- Proposed Achany Wind Farm Extension Substation
- Baseline Alignment

**Alignment Variants**

- Alignment Variant 1
- Alignment Variant 2
- Alignment Variant 3
- Alignment Variant 4
- Alignment Variant 5
- Alignment Variant 6
- Alignment Variant 7
- Alignment Variant 8
- Alignment Variant 9
- Alignment Variant 10
- Alignment Variant 11
- Alignment Variant 12

**Existing and Proposed Wind Turbines**

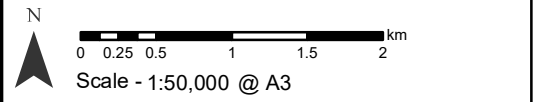
- Proposed Achany Wind Farm Extension Turbines
- Existing Achany Wind Farm
- Existing Rosehall Wind Farm Turbines

**Associated Figures**

Figure 2b: Alignment Variant Group 1 - Durcha

Figure 2c: Alignment Variant Group 2 - Middle Hill and Linsidmore

Figure 2d: Alignment Variant Group 3 - Shin Forest



Reproduced by permission of Ordnance Survey on behalf of HMSO. Crown copyright and database right 2023 all rights reserved. Ordnance Survey Licence number EL273236.

**Project:** Achany Extension Wind Farm Grid Connection

**Title:** Figure 2a - Alignment Variant Groups with Constraints

**Drawn by:** CG **Date:** 30/05/2023

**Drawing:** 122010-D2A-ACD-2.0.1