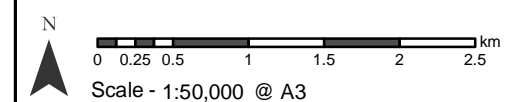


**Legend**

- Proposed Achany Wind Farm Extension Substation
- Shin Substation
- Baseline Alignment
- Alignment Variants**
- Alignment Variant 1
- Alignment Variant 2
- Alignment Variant 3
- Alignment Variant 4
- Alignment Variant 5
- Alignment Variant 6
- Alignment Variant 7
- Alignment Variant 8
- Alignment Variant 9
- Alignment Variant 10
- Alignment Variant 11
- Alignment Variant 12

**National Importance for Carbon-Rich Soil, Deep Peat and Priority Peatland Habitat**

- CLASS 1 All vegetation cover is priority peatland habitats. All soils are carbon-rich soils and deep peat
- CLASS 2 The vegetation cover is dominated by priority peatland habitats. All soils are carbon-rich soil and deep peat
- CLASS 3 Dominant vegetation cover is not priority peatland habitat but is associated with wet and acidic type. Occasional peatland habitats can be found. Most soils are carbon-rich soils, with some areas of deep peat
- CLASS 5 Soil information takes precedence over vegetation data. No peatland habitat recorded. May also show bare soil. All soils are carbon-rich soil and deep peat
- Mineral soils - Peatland habitats are not typically found on such soils
- Non-soil (i.e. loch, built up area, rock and scree)



Reproduced by permission of Ordnance Survey on behalf of HMSO.  
© Crown copyright [and database rights] (2022)  
0100031673 OS OpenData.  
© SNH and JHI available under an Open Government Licence

Project: Achany Extension Wind Farm Grid Connection

Title: Figure 4 - Peat Classification

Drawn by: PW Date: 02/05/2023

Drawing: 04707.00001.0004.0