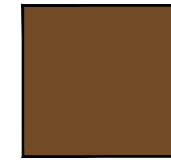
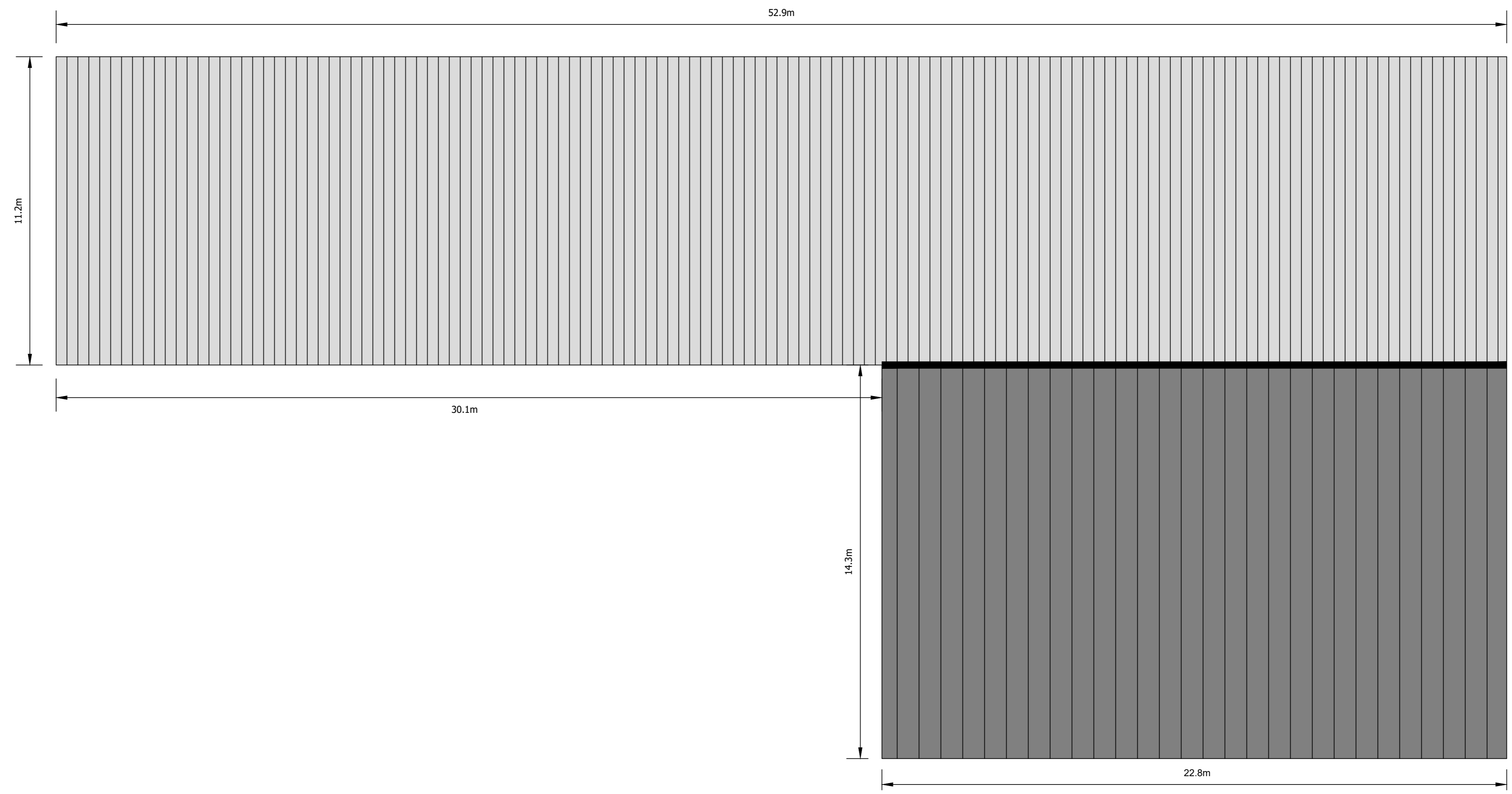


NOTE:

- STEEL PORTAL FRAMES WITH METAL CLADDING AND ROOF.
- AIS BUILDING WOULD BE PAINTED WITH A RECESIVE COLOUR MID-BROWN, SUCH AS RAL 8008: OLIVE BROWN OR SIMILAR APPROVED (EXAMPLE BELOW).



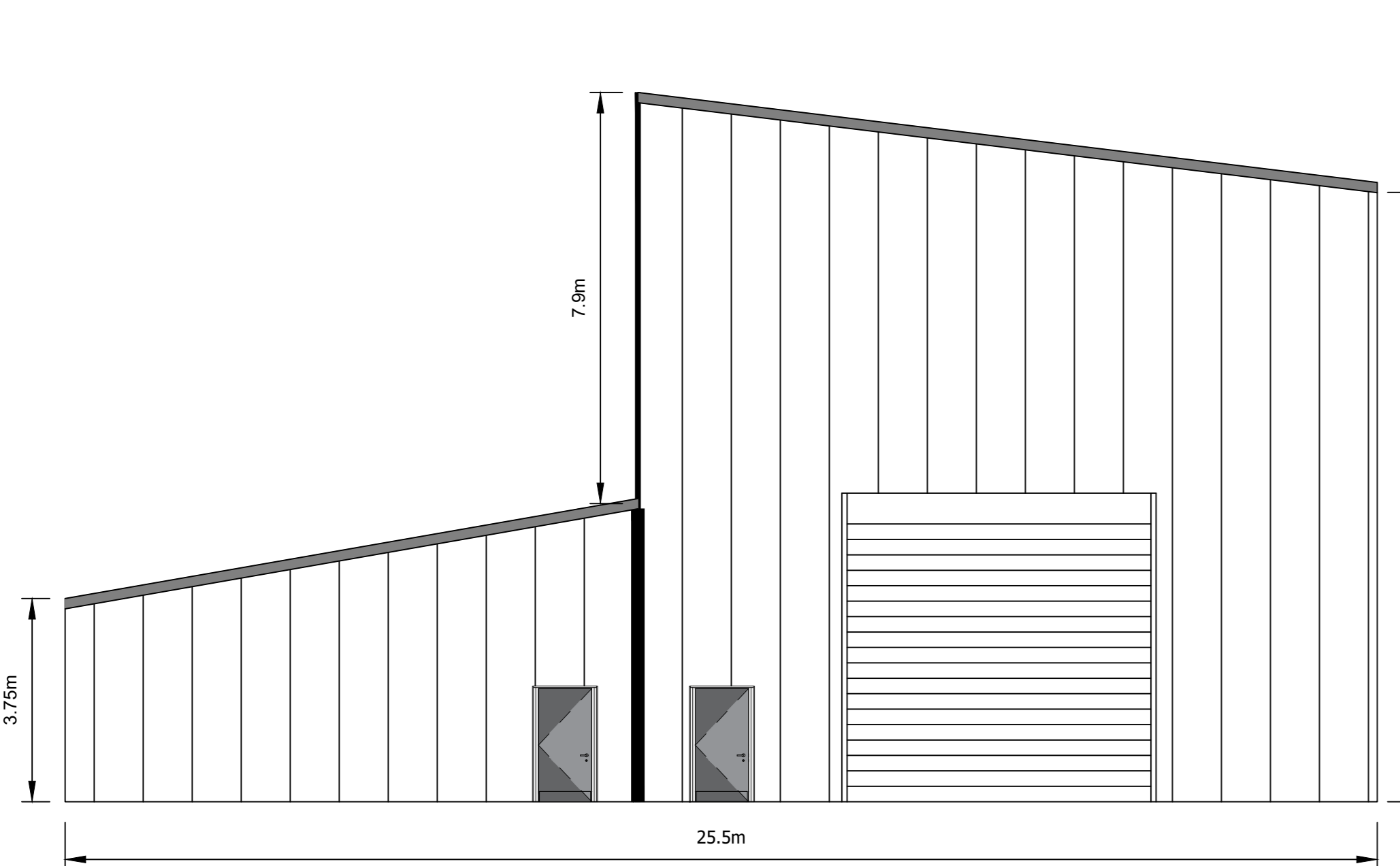
RAL 8008: OLIVE BROWN



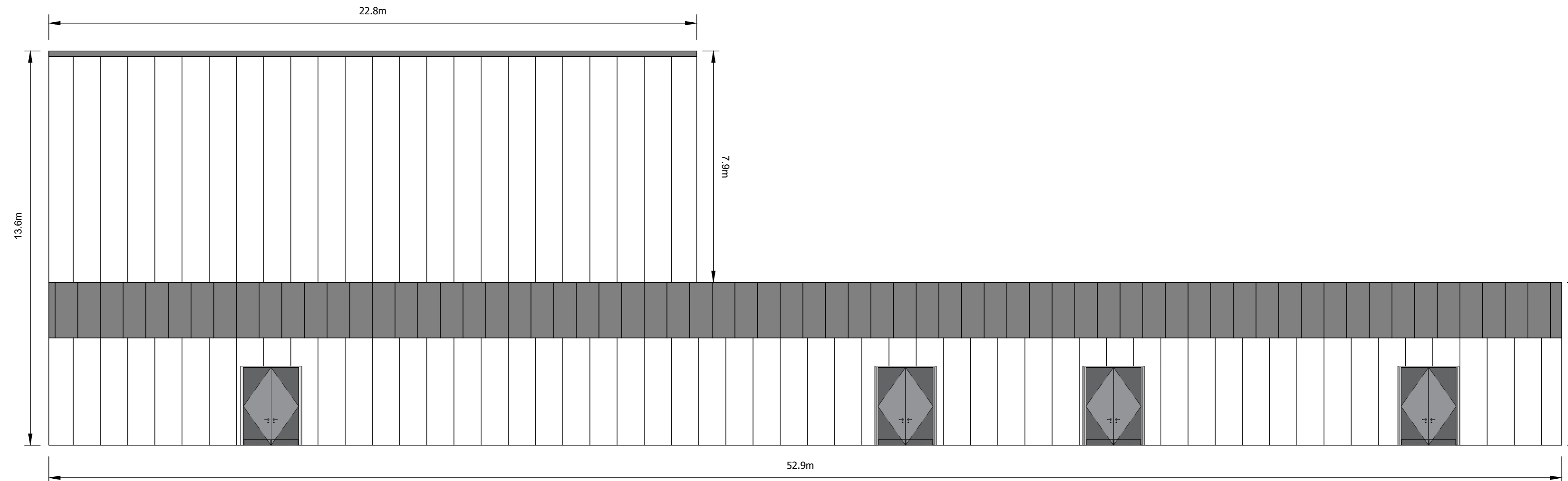
ROOF PLAN



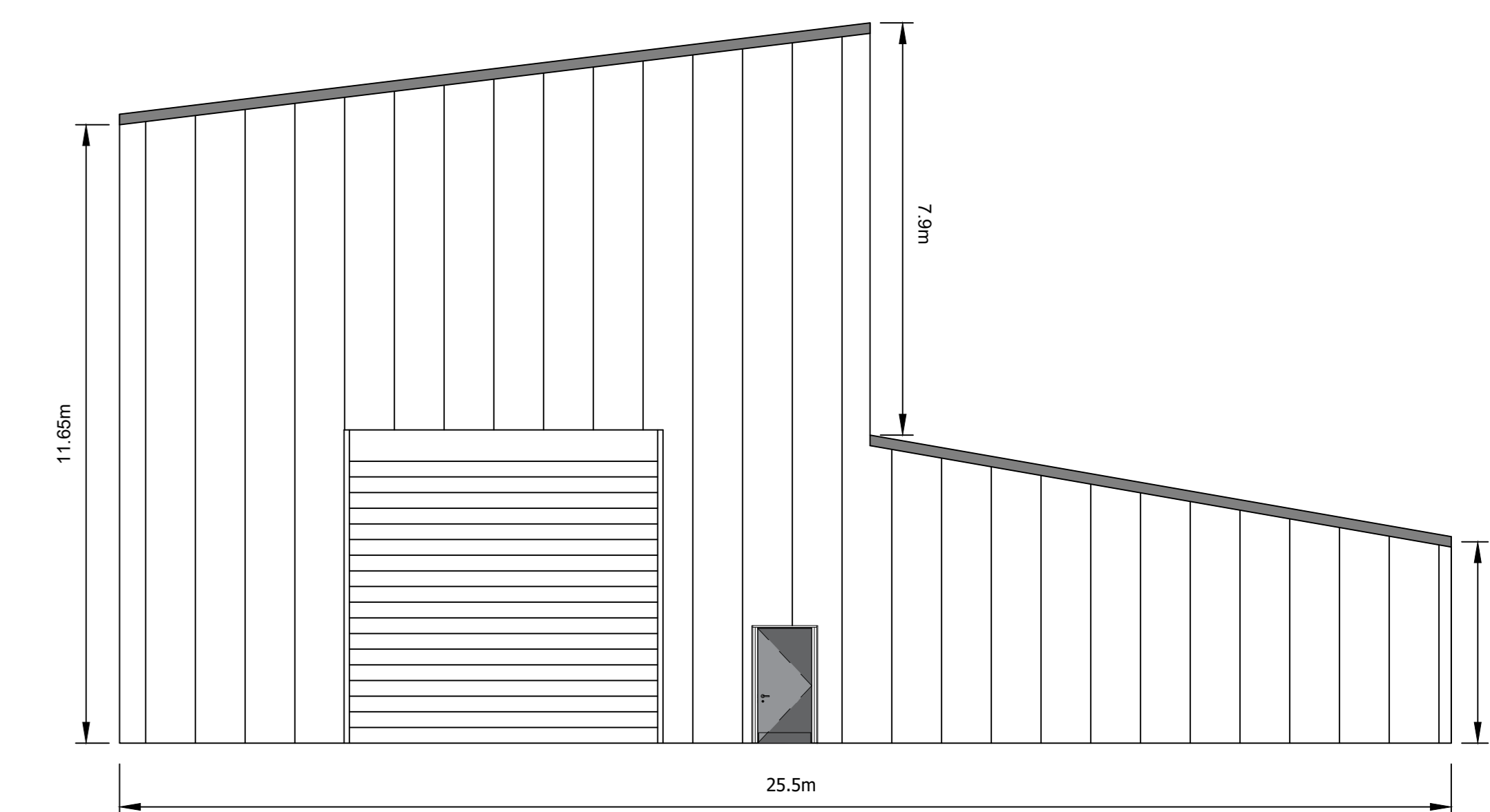
REAR ELEVATION



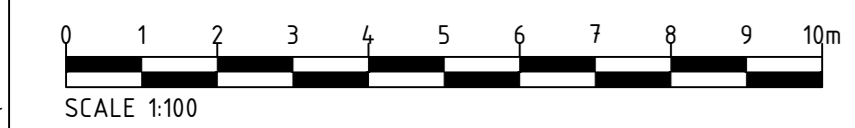
WEST ELEVATION



FRONT ELEVATION



EAST ELEVATION



NOTES

1. THIS DRAWING IS TO BE READ IN CONJUNCTION WITH ALL OTHER RELEVANT DOCUMENTATION INCLUDING THE PROJECT HEALTH & SAFETY FILE FOR ANY IDENTIFIED POTENTIAL RISKS.
2. DO NOT SCALE FROM THIS DRAWING. USE ONLY PRINTED DIMENSIONS.

Revision	Details	By	Check	Date	Scale

Purpose of Issue	PLANNING
THIS DRAWING IS TO BE USED ONLY FOR THE PURPOSE OF ISSUE THAT IT WAS ISSUED FOR AND IS SUBJECT TO AMENDMENT.	
SAFETY, HEALTH AND ENVIRONMENTAL INFORMATION BOX	

Client

Project Title
AN SUIDHE SUBSTATION

Drawing Title
**PLANNING FIGURE 004b
SUBSTATION BUILDING
ELEVATIONS**

Designed	Drawn	Checked	Approved
Arcus Internal Project No. 4534		Date	06/09/22
Scale of A3 1:100			

Arcus Consultancy Services
7th Floor
144 West George Street
Glasgow G2 2PL
Tel: +44 (0)141 221 9997
Fax: +44 (0)141 221 5610
www.arcusgroup.co.uk

Drawing Number
4534a-DR-P-0006

Rev
2

File Path: C:\Projects\4534\004b\004b.dwg
 File Name: 4534\004b\004b.dwg
 Project Name: 4534
 Project Path: C:\Projects\4534\004b\004b.dwg
 Project Title: AN SUIDHE SUBSTATION
 Drawing Title: PLANNING FIGURE 004b SUBSTATION BUILDING ELEVATIONS