

Legend

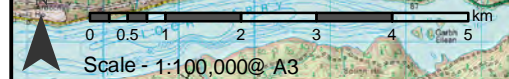
- Proposed Bhlaraidh Extension Wind Farm Site Boundary
- Route Options

Figure 6b

Figure 6c

Figure 6d

Figure 6e



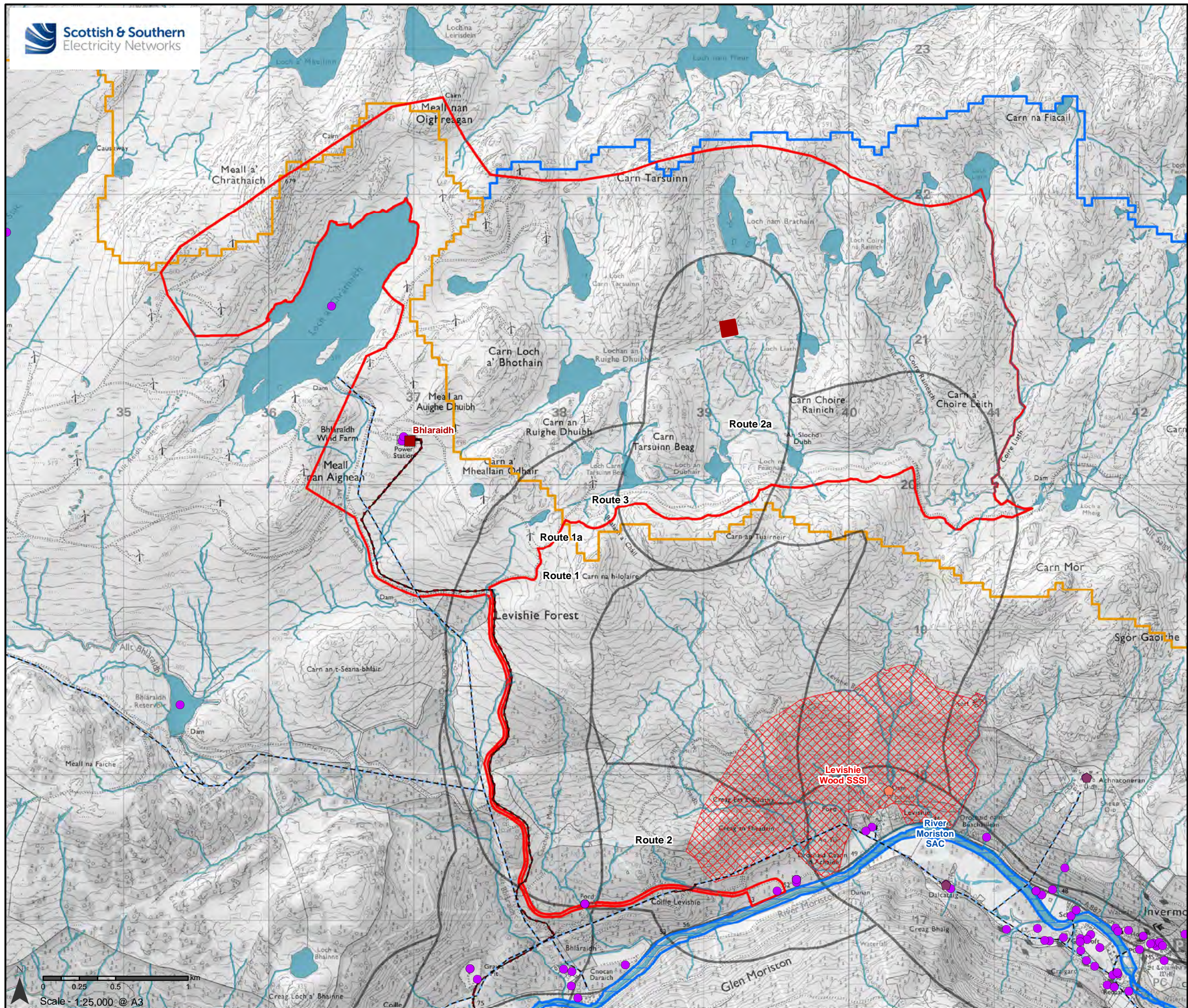
Reproduced by permission of Ordnance Survey on behalf of HMSO.
Crown copyright and database right 2020 all rights reserved.
Ordnance Survey Licence number EL273236.

Project No: LT295
Project: Bhlaraidh Extension Wind Farm
Grid Connection
Consultation Report

Title: Figure 6a - Local Hydrology

Drawn by: NJG Date: 13/10/2020

Drawing: 04707.00017.11.0



Legend

- Proposed Bhlaraidh Extension
- Wind Farm Site Boundary
- Existing Substations
- High Voltage Line
- High Voltage Cable
- Proposed Substation
- Route Options
- Surface Water (OS OpenMap Local)
- SEPA CAR Licensed Activity

Private Water Supplies

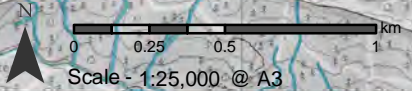
- Borehole
- Property
- Special Areas of Conservation (SAC) Site
- Site of Special Scientific Interest (SSSI)
- Allt Saigh Catchment Area
- River Moriston Catchment Area

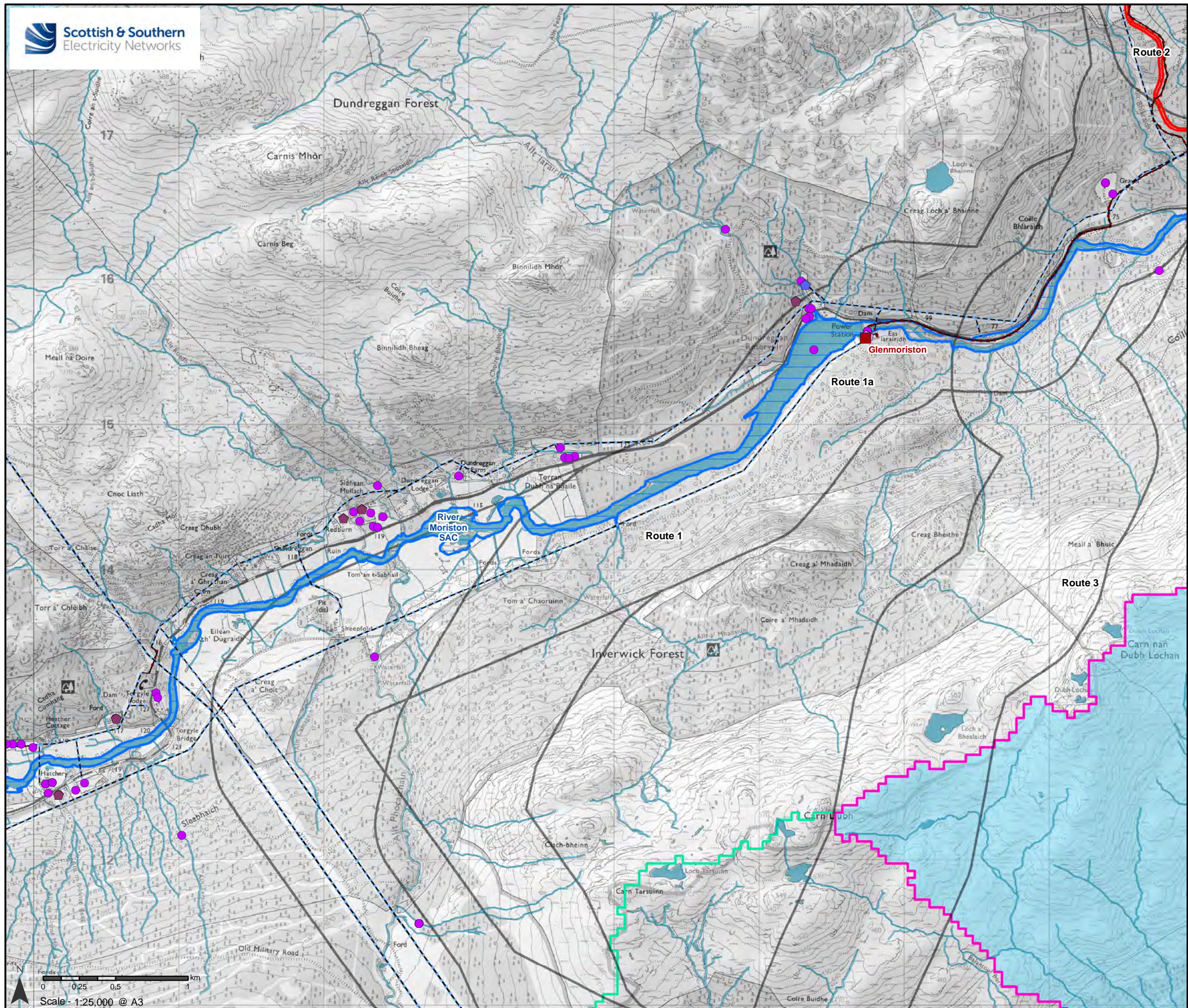
Reproduced by permission of Ordnance Survey on behalf of HMSO.
Crown copyright and database right 2020 all rights reserved.
Ordnance Survey Licence number EL273236.

Project No: LT295
Project: Bhlaraidh Extension Wind Farm
Grid Connection
Consultation Report

Title: Figure 6b - Local Hydrology

Drawn by: NJG/RE Date: 13/10/2020
Drawing: 04707.00017.12.0





Legend

- Proposed Bhlaraidh Extension Wind Farm Site Boundary
- Existing Substations
- High Voltage Line
- High Voltage Cable
- Route Options
- Surface Water (OS OpenMap Local)
- SEPA CAR Licensed Activity

Private Water Supplies

- ◆ Hill Loch
- ◆ Property
- ◆ River
- ◆ Stream

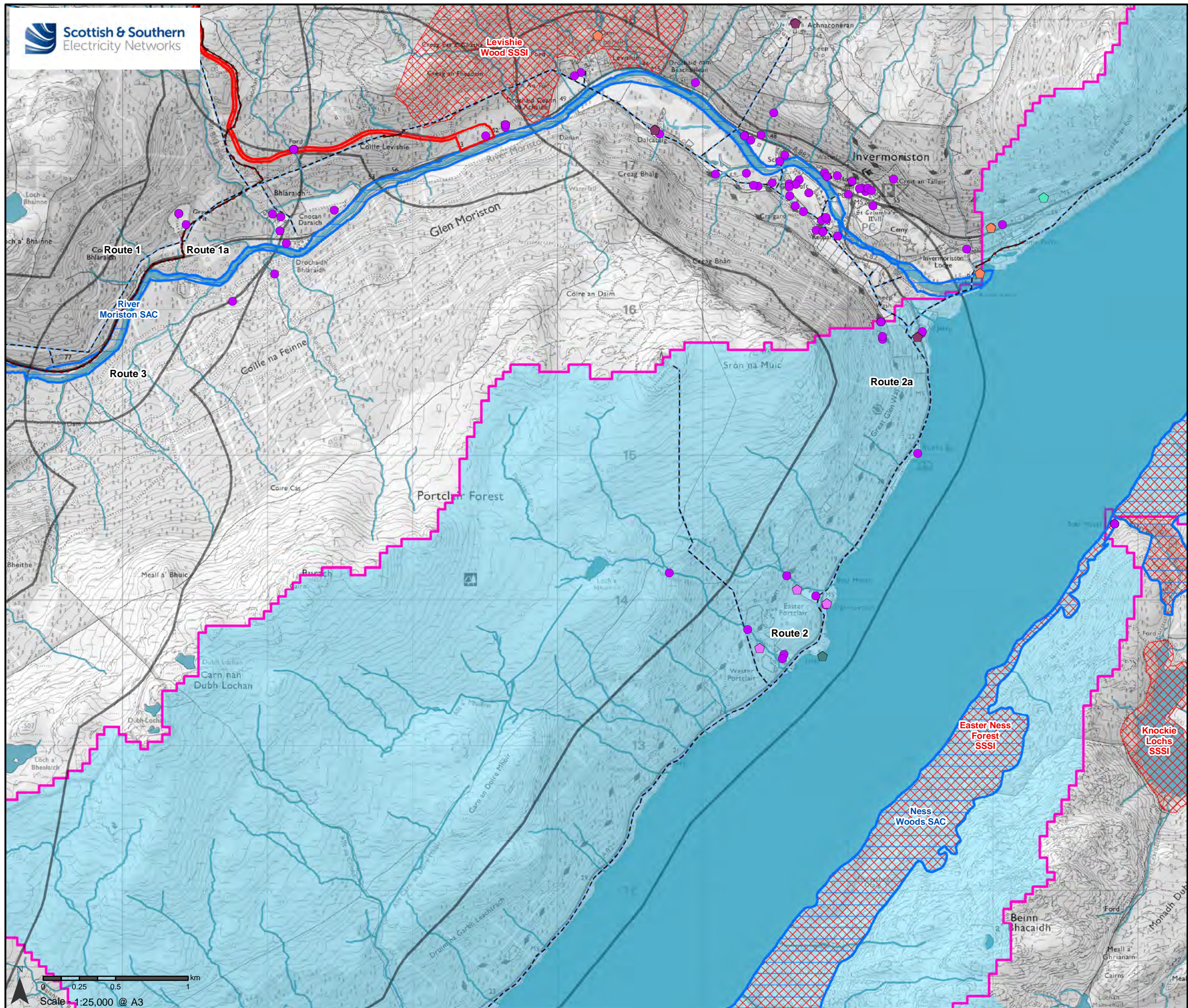
- Special Areas of Conservation (SAC) Site
- Loch Ness Catchment Area
- River Moriston Catchment Area
- River Oich Catchment Area
- Drinking Water Protected Areas

Reproduced by permission of Ordnance Survey on behalf of HMSO.
Crown copyright and database right 2020 all rights reserved.
Ordnance Survey Licence number EL273236.

Project No: LT295
Project: Bhlaraidh Extension Wind Farm
Grid Connection
Consultation Report

Title: Figure 6c - Local Hydrology

Drawn by: NJG/RE Date: 13/10/2020
Drawing: 04707.00017.12.0



Legend

- Proposed Bhlaraidh Extension Wind Farm Site Boundary
- High Voltage Line
- High Voltage Cable
- Route Options
- Surface Water (OS OpenMap Local)
- SEPA CAR Licensed Activity

Private Water Supplies

- ◆ Borehole
- ⬠ Loch
- ◆ Property
- ⬠ Spring
- ⬠ Stream

Special Areas of Conservation (SAC) Site

Site of Special Scientific Interest (SSSI)

Loch Ness Catchment Area

River Moriston Catchment Area

River Oich Catchment Area

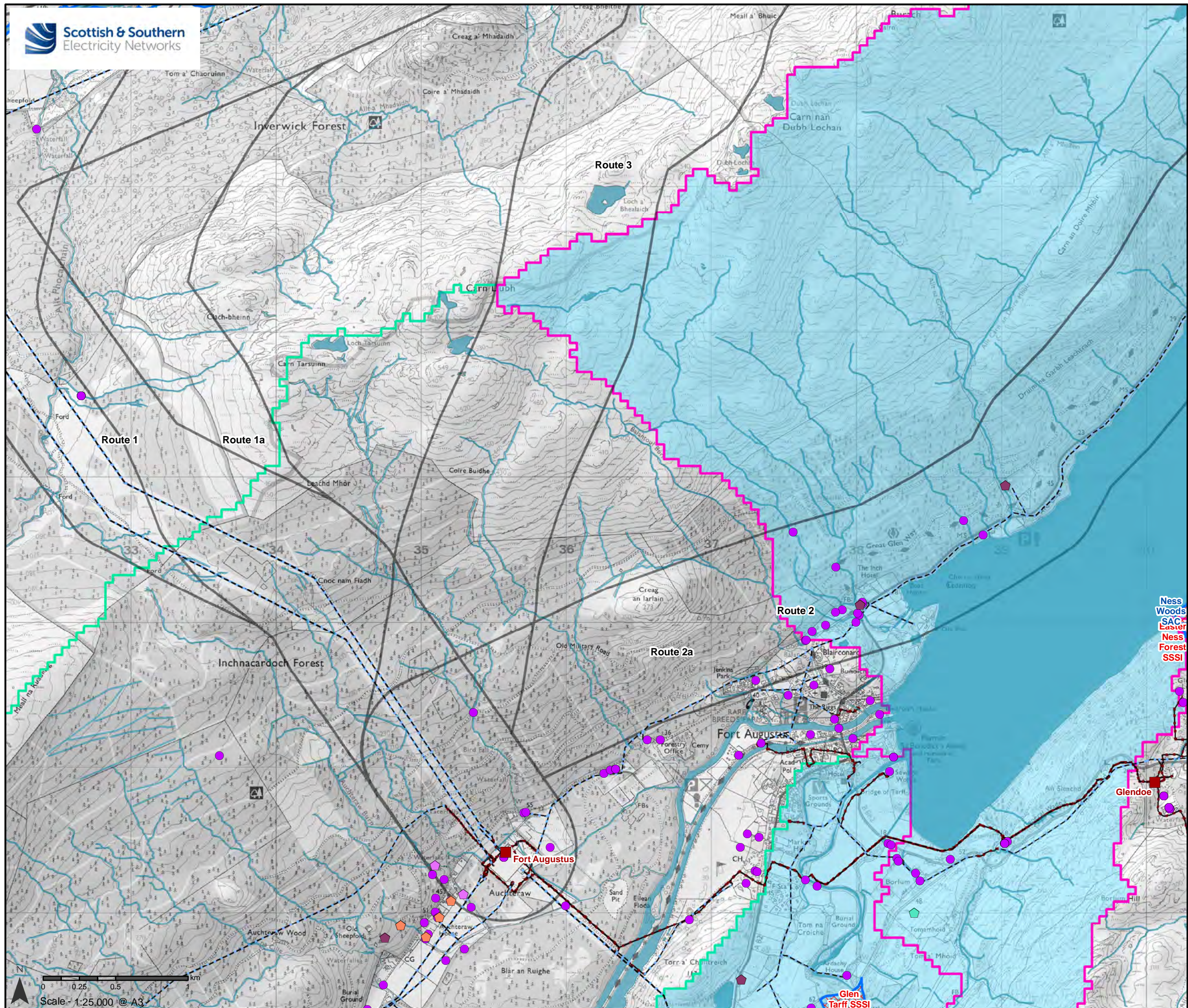
Drinking Water Protected Areas

Reproduced by permission of Ordnance Survey on behalf of HMSO.
Crown copyright and database right 2020 all rights reserved.
Ordnance Survey Licence number EL273236.

Project No: LT295
Project: Bhlaraidh Extension Wind Farm Grid Connection Consultation Report

Title: Figure 6d - Local Hydrology

Drawn by: NJG/RE Date: 13/10/2020
Drawing: 04707.00017.12.0



- Legend**
- Existing Substations
 - High Voltage Line
 - High Voltage Cable
 - Route Options
 - Surface Water (OS OpenMap Local)
 - SEPA CAR Licensed Activity
- Private Water Supplies**
- Borehole
 - Property
 - Spring
 - Stream
- Special Areas of Conservation (SAC) Site**
- Site of Special Scientific Interest (SSSI)
 - Loch Ness Catchment Area
 - River Moriston Catchment Area
 - River Oich Catchment Area
 - Drinking Water Protected Areas

Reproduced by permission of Ordnance Survey on behalf of HMSO.
Crown copyright and database right 2020 all rights reserved.
Ordnance Survey Licence number EL273236.

Project No: LT295
Project: Bhlaraidh Extension Wind Farm
Grid Connection
Consultation Report

Title: Figure 6e - Local Hydrology

Drawn by: NJG/RE Date: 13/10/2020
Drawing: 04707.00017.12.0