

**Pre-Application Consultation Report**  
**Crarae 275 kV Substation**  
**21/01322/PREAPP**



## CONTENTS

<b>1.</b>	<b>INTRODUCTION</b>	<b>1</b>
1.1	Purpose of Document	1
1.2	Document Structure	1
<b>2.</b>	<b>PROPOSED DEVELOPMENT</b>	<b>2</b>
2.1	Project Background, the Proposed Development Need and Planning History	2
<b>3.</b>	<b>THE CONSULTATION PROCESS</b>	<b>5</b>
3.1	Overview	5
3.2	Proposal of Application Notice	5
3.3	Discussion with Statutory Consultees	5
3.4	History of Public Consultation Events	5
3.5	Public Consultation Event	6
3.6	Any additional steps taken to consultation	6
<b>4.</b>	<b>PUBLIC RESPONSES AND KEY ISSUES</b>	<b>7</b>
4.1	Public Consultation Event	7
<b>5.</b>	<b>CONCLUSIONS AND NEXT STEPS</b>	<b>10</b>
5.1	Conclusions	10
5.2	Next Steps	10

## APPENDICES

- Appendix 1: Crarae 275 kV Proposal of Application Notice 1 and 2
- Appendix 2: Press Advert Poster and Maildrop
- Appendix 3: Argyll Substations 275 kV Website
- Appendix 4: Argyll Substations 275 kV Consultation Brochure
- Appendix 5: Crarae Substation Virtual Consultation Board
- Appendix 6: Crarae 275 kV updated Proposal of Application Notice
- Appendix 7: Updated Press Advert Poster and Maildrop

# 1. INTRODUCTION

## 1.1 Purpose of Document

- 1.1.1 Scottish and Southern Electricity Networks (SSEN Transmission), operating under licence held by Scottish Hydro Electric Transmission plc, owns, operates and develops the high voltage electricity transmission system in the north of Scotland and remote islands and has a statutory duty under Schedule 9 of the Electricity Act to develop and maintain an efficient, co-ordinated and economical electrical transmission system in its licence area.
- 1.1.2 SSEN Transmission is applying for consent under the Town and Country Planning (Scotland) Act 1997 (as amended) to construct and operate a 275 kilovolt (kV) substation and associated infrastructure (the 'Proposed Development'). The Proposed Development is located in Argyll and Bute, West Scotland, approximately 1.4 kilometres (km) northwest of Minard, in the vicinity of the existing Crarae substation and the Inveraray to Crossaig 275 kV overhead line (OHL).
- 1.1.3 The Proposed Development falls within the category of 'National Development' under the Town and Country Planning (Hierarchy of Development) (Scotland) Regulations 2009 (the Hierarchy Regulations). Therefore, there is a statutory requirement to undertake public consultation in accordance with the Town and Country Planning (Development Management Procedure) (Scotland) Regulations 2013 (SSI 2013/155).
- 1.1.4 This Pre-Application Consultation (PAC) Report documents the consultation process for the project which has been undertaken in accordance with the Hierarchy Regulations and Development Management Procedures prior to submission of the application. The programme of consultation was designed to engage with Argyll and Bute Council, statutory and non-statutory consultees, local communities, landowners, and individual residents to invite feedback on the proposals.
- 1.1.5 The PAC Report describes the key responses received and details the actions taken in response to the issues raised.

## 1.2 Document Structure

- 1.2.1 This PAC Report is comprised of five parts as follows:
- 1: Introduction – sets out the purpose of the PAC Report.
  - 2: Proposed Development – outlines the background to the project and provides a description of the key elements, the proposed development need and planning history.
  - 3: The Consultation Process – describes the framework for consultation and methods which have been employed.
  - 4: Public Responses and Key Issues – summarises the range of responses and key comments and issues arising through the consultation process.
  - 5: Conclusions and Next Steps – provides a summary of the conclusions reached and actions going forward.
- 1.2.2 The main body of this PAC Report is supported by a series of appendices and figures.

## 2. PROPOSED DEVELOPMENT

### 2.1 Project Background, the Proposed Development Need and Planning History

2.1.1 There is a requirement for SSEN Transmission to increase its network capability in Argyll and Kintyre, beyond that already under current construction and public development, to enable the connection of further renewable generation and to export to the wider national electricity transmission network. This group of works, designed to deliver the required increase in network capacity, has been named the 'Argyll and Kintyre 275 kV Strategy'.

2.1.2 The Proposed Development forms part of the Argyll and Kintyre 275 kV Strategy and aims to reinforce the existing transmission network connections in the Argyll region and will connect to the Inveraray to Crossaig OHL.

2.1.3 SSEN Transmission is applying for consent to construct and operate a 275 kV substation and associated infrastructure. The Proposed Development details at the time of consultation comprised of:

- A level platform of up to 0.6 ha
- Gas insulated switchgear (GIS)
- A control building (likely to be 31m by 45m with an approximate height of 15m), infrastructure, electrical equipment and Internal roads, access paths, and hardstanding areas within the substation compound.

2.1.4 A formal request for an Environmental Impact Assessment (EIA) Screening Opinion under the Town and Country Planning (Environmental Impact Assessment) (Scotland) Regulations 2017 was submitted to Argyll & Bute Council (ABC) in August 2021.

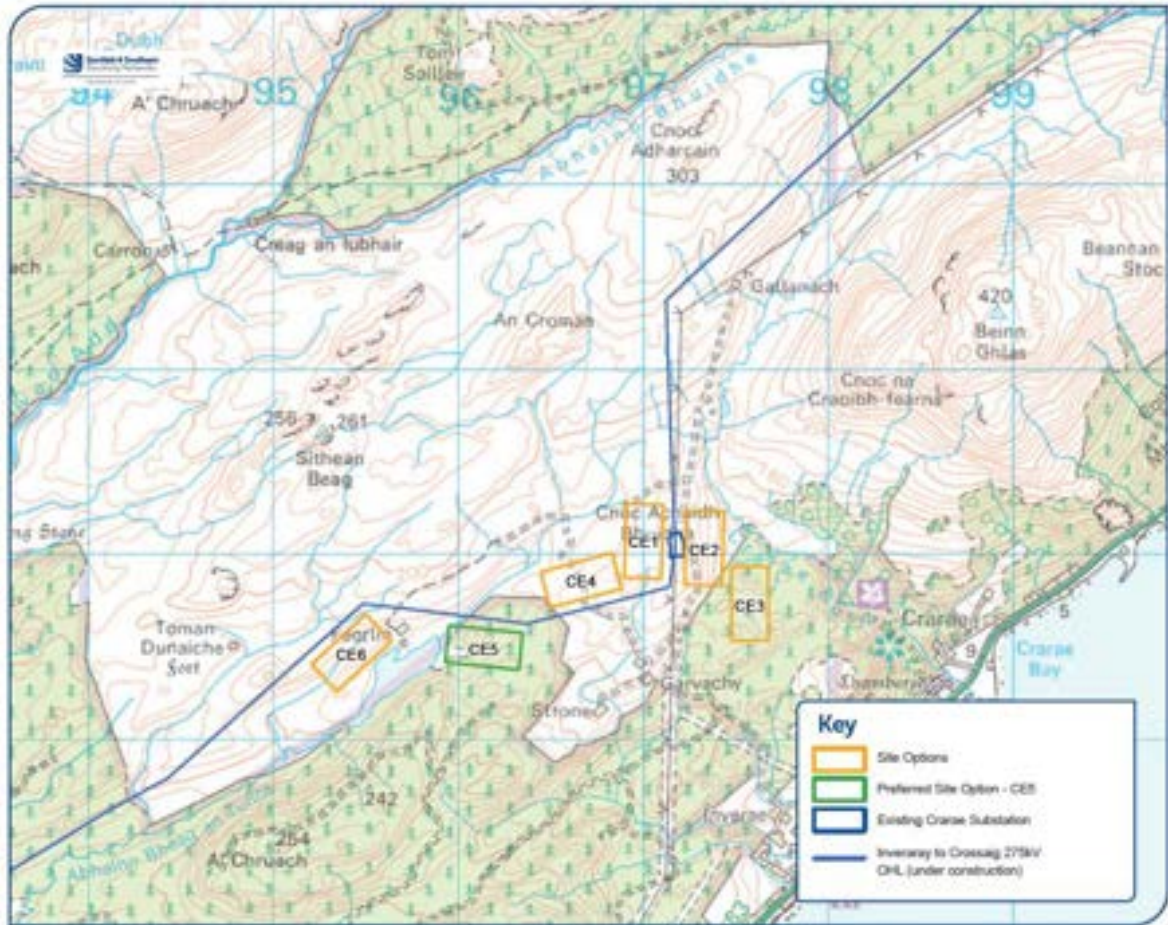
A site selection exercise was undertaken, and the options consulted on in July 2021. Site Option CE5 was selected as the preferred site on the basis of least potential for environmental and technical constraints. The Site Options are outlined on **Plate 1**.

2.1.5 The Proposal of Application Notice (PAN) Red Line Boundary which was consulted on is shown in **Plate 2**. This shows the location and the maximum extent of the proposed development. Since the PAN consultation in November/December 2021, the design for the substation has been refined based on the feedback received and environmental and technical considerations. The final design falls within the PAN Red Line Boundary and details of the design which is being submitted can be found in the Planning Application and supporting documentation.

2.1.6 A Planning Statement is being prepared to accompany the Planning Application, providing further detail on the planning history of the site.

2.1.7 In addition to the components of the project which are subject to Town and Country Planning, a number of elements of the associated development will be subject to Section 37 consent. These components were detailed in the consultation literature and the PAN event and at the time of consultation comprised of:

- Approximately three towers that will be required to make the connection into and out of the proposed substation;
- A short-term temporary overhead line diversions during construction;
- Temporary works areas (where possible, the main site compound will be shared with the substation):  
and
- Dismantling of three redundant towers.



**Plate 1: Crarae Site Options and Preferred Site**

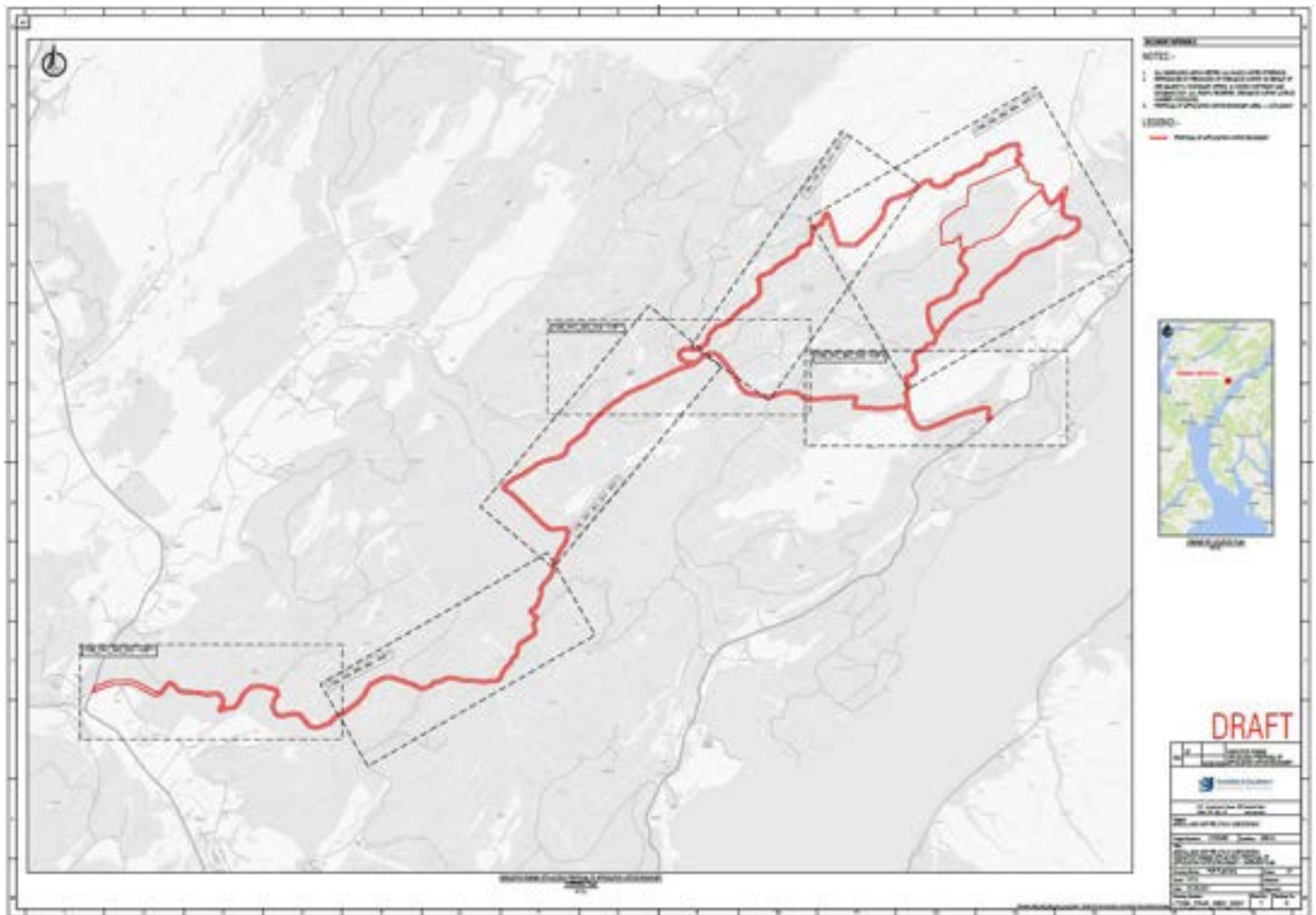


Plate 2: Crarae Substation PAN Red Line Boundary

## 3. THE CONSULTATION PROCESS

### 3.1 Overview

3.1.1 This section describes the methods employed during the consultation process and provides information on meetings and consultation held with Stakeholders to obtain feedback on the application prior to submission.

### 3.2 Proposal of Application Notice

3.2.1 A PAN was originally submitted to ABC on the 3 September 2021, then on 18 October 2021 to reflect a change in the date and then on 24 November 2021 following the Scottish Government's updated guidance on the pandemic, this then triggered a consultation period. The PAN provided ABC with an outline of the application details, and confirmation of the site location and pre-application boundary. Copies of the PANs are provided in **Appendix 1 and Appendix 6**.

### 3.3 Discussion with Statutory Consultees

3.3.1 SSEN Transmission has undertaken discussions with ABC, prior to, and during the PAN notice period. This has involved telephone and email communications to discuss the proposals and provide updates about submission timescales. Email communication was undertaken in advance of the public consultation to all other relevant Statutory Consultees including, but not limited to NatureScot, SEPA and Historic Environment Scotland., containing information on the PAN event details for the Crarae substation.

### 3.4 History of Public Consultation Events

3.4.1 In July 2021, local community members and statutory consultees were invited to comment on the proposals for the location of the Crarae substation. Six options were presented and the SSEN Preferred option identified. Further consultation was held in November/December 2021.

3.4.2 Due to the restrictions in place around social gatherings because of the Covid-19 pandemic, the public consultation in July 2021 and the PAN event in December 2021 were held virtually. Originally the PAN event was organised both virtually and in person however due to a rise in Covid-19 cases and changes in Government Guidance SSEN Transmission made the decision to cancel the face-to-face events and proceed with only virtual events.

3.4.3 A bespoke online consultation platform was developed, which allowed Stakeholders to visit a virtual consultation room and view the project information. The virtual platform was designed to enable Stakeholders to experience the full exhibition from home on a computer, tablet, or mobile device. It was designed to look and feel like a face-to-face consultation in a community hall, with exhibition boards, maps, interactive videos, and the opportunity to share views on the proposals. As an alternative to face-to-face events which SSEN Transmission held a live chat function which was available at the advertised times to allow attendees to ask questions and get responses from the project team.

### 3.5 Public Consultation Event

3.5.1 The PAN virtual consultation event commenced on 22 November 2021 and the consultation period finished on the 10 January 2022.

3.5.2 The consultation was communicated in the following ways:

- The consultation events were advertised in the Argyllshire Advertiser and The Oban Times (**Appendix 2 and 7**);
- Leaflets were sent out to over 2,300 properties in proximity of the proposals notifying them of the consultation event (**Appendix 2 and 7**);
- A Consultation Brochure was produced providing information on the proposed development, Crarae Substation is detailed on pages 10 and 11, with the feedback form provided on page 25 and 26. The Brochure is available here: <https://www.ssen-transmission.co.uk/media/6118/argyll-and-kintyre-275kv-substations-pre-application-consultation-final01.pdf>;
- The SSEN Transmission website <https://www.ssen-transmission.co.uk/projects/argyll-and-kintyre-275kv-substations/>;
- Advance notification ahead of the consultation events was provided to local elected members including Community Councils, including the link to website and brochure;
- Copies of brochure were sent out to local communities via the community councillors to put into local shops so that they were easily accessible to the community; and
- Emails were issued to affected Landowners and Statutory Consultees informing them of the PAN event.

3.5.3 The virtual event provided an opportunity for members of the Public, Local Stakeholders and Statutory Consultees and Authorities to view information about the project, ask questions (on the live chat function) and provide feedback.

3.5.4 The Crarae Substation display board presented in the virtual exhibition, is provided in **Appendix 5**.

3.5.5 A 3D model providing visualisations of the Proposed Development were available at the exhibition and can still be viewed here <https://3dwtech.co.uk/dashboard/ssen/argyll-and-kintyre-275kv-substations/exhibition/>.

3.5.6 Attendees were invited to ask questions and give comments at the event, as well as give feedback via comments forms and / or via the project website.

### 3.6 Any additional steps taken to consultation

3.6.1 Due to changing guidance by Scottish Government and the rising covid levels in Argyll we decided not to go ahead with our face to face events and just go ahead with our virtual events. In addition to this we organised a webinar with the project team on the 14 December. This invite was sent to all community stakeholders and was extended to statutory stakeholders. It allowed the team to present what was in the brochure and take any questions, there were a total of four attendees and ten questions were asked. This Webinar can be viewed on the project webpage<sup>1</sup>

---

<sup>1</sup> [Argyll and Kintyre 275kV Substations \(ssen-transmission.co.uk\)](https://www.ssen-transmission.co.uk)



## 4. PUBLIC RESPONSES AND KEY ISSUES

### 4.1 Public Consultation Event

4.1.1 The PAN consultation ran for seven weeks, starting Monday 22 November 2021 to Monday 10 January 2022.

4.1.2 **Section 3.5.2** provides a summary of how the event was advertised to ensure Stakeholders were aware it was taking place.

4.1.3 SSEN Transmission asked Stakeholders to respond to the following questions:

1. Do you feel sufficient information has been provided to enable you to understand what is being proposed on site and why?
2. Are you satisfied that the proposed layout and design is appropriate for the site location?
3. Do you have any particular concerns or queries on the Proposed Development?
4. Is there anything specific you would like to raise in relation to the project which will impact on the planning process to deliver this essential network upgrade at Crarae substation.?
5. Do you have any other comments / support on the Proposed Development?

4.1.4 SSEN Transmission received no feedback forms regarding Crarae Substation following our PAN Event despite various efforts to advertise the events. During the consultation period we received two pieces of feedback concerning Crarae Substation one was a written response from Historic Environment Scotland and the other was a formal response to the PAN from ABC. From the webinar, which related to all substations, ten questions were asked on generic issues that are concerning for the community relating to the construction of these substations.

4.1.5 **Table 4.1** summarises the comments received from the PAN event and the webinar. Feedback can be grouped into the following three themes: Impact on Tourism and Local Industry, Consultation and Cultural Heritage Impacts.

**Table 4.1:** Consultation Feedback

Topic	Who	Comments Raised	SSEN Transmission's Response
Consultation	Community/Argyll and Bute Council	Concerns around consultation in a pandemic resulting in possible issues for elderly and those in more rural areas with no access to Wi-Fi	<p>Initially SSEN Transmission had planned on face-to-face events as well as the virtual consultation however due to rising covid numbers in Argyll SSEN Transmission have had to cancel the in-person events and have the consultation only virtual. For the project consultation events, the advertising methods included:</p> <ul style="list-style-type: none"> <li>• Advertising within local publications such as The Oban Times and Argyllshire Advertiser;</li> <li>• Writing to local community councils and elected members;</li> <li>• Sending out information flyers to local properties; and</li> <li>• Advertising via the project websites.</li> </ul>
Consultation	Argyll and Bute Council	How will communications be managed?	<p>Communications will be managed via the SSEN Transmission community liaison manager who will be stay in contact with local community councils and local elected members.</p> <p>When there is any update on the proposed planning submission date the local community will be notified via mail drop and the submission will advertise in the local newspaper. SSEN Transmission will also update the website to reflect any updates.</p>
Local Industry/tourism	Community	What measures will SSEN take to ensure private roads and tracks are not used?	<p>SSEN Transmission will look to organise a (Community Liaison Group) CLG prior to construction commencing to inform and share updates on the access tracks and routes that will be taken during the project.</p> <p>The SSEN Transmission construction contractors will be made aware of the access tracks that are to be used for the project and will be expected to comply.</p>

Topic	Who	Comments Raised	SSEN Transmission's Response
Local Industry/tourism	Argyll and Bute Council	Will your traffic management plan be made available?	<p>A Traffic Management Plan will be prepared as part of the Planning Permission condition discharge process. This will be submitted to ABC for agreement.</p> <p>This will be made available and will be communicated through the CLG.</p>
Cultural Heritage	Historic Environment Scotland	<p>We note that the Crarae Garden and Designed Landscape (GDL00118) is approximately 1.8km to the east of the proposed substation. We note that the consultation document states that the presence of intervening forestry and the separation distance suggests that there will be no significant effects on the setting of the designated assets. We would reiterate our previous advice (12 July 2021) regarding Crarae that impacts should be carefully assessed in terms of the setting of the GDL, including views from the garden as well as views towards the garden across Loch Fyne. We recommend that it be informed by Zone of Theoretical Visibility (ZTV) models and visualisations where appropriate.</p>	<p>The visual association between the Proposed Development and the Crarae Gardens and Designated Landscape and the resulting potential for an indirect impact to the asset will be assessed against the final design using ZTV (including visualisations where appropriate),</p>

## 5. CONCLUSIONS AND NEXT STEPS

### 5.1 Conclusions

5.1.1 The PAN was submitted to ABC initially on the 3 September 2021 and 18 October and then an update was sent out on the 24 November 2021 (**Appendix 1 and 6**).

5.1.2 This PAC Report documents the consultation which ran for seven weeks, starting Monday 22 November 2021 to Monday 10 January 2022.

5.1.3 The consultation was designed to engage with Stakeholders, primarily the local community, landowners, and individual residents, to invite feedback on the Proposed Development. The common themes from the feedback forms were:

- Impact on Tourism and Local Industry;
- Consultation; and
- Cultural Heritage impacts.

5.1.4 The approach to public consultation has ensured that the local community have been given the opportunity to comment on the proposals. This has enabled locally important issues and concerns to be identified and subsequently considered in the preparation of the Crarae 275 kV Substation consents application.

### 5.2 Next Steps

5.2.1 SSEN Transmission will continue to engage with Stakeholders and the local community as the project progresses. Members of the public will also have opportunity to comment on the Planning Application and the Section 37 application, once they have been submitted, directly to ABC and Energy Consents Unit. Full instructions on how to comment and the timescales for doing so will be advertised in the local press when the applications are submitted. Information will be posted on the SSEN Transmission's project website at: <https://www.ssen-transmission.co.uk/projects/argyll-and-kintyre-275kv-substations/>.

## **APPENDIX 1: CRARAE 275 KV PROPOSAL OF APPLICATION NOTICE 1 AND 2**

Form provided by



This form should be used by prospective applicants to serve notice to both the Planning Authority and other relevant persons/community groups/agencies that 'PAC' is to be undertaken in respect of a prospective planning application.

For Official Use Only
Date Received:
.....
Ref:
.....

**Pre-Application Consultation ('PAC') - Proposal of Application Notice**

**Requisite Notice under Section 35B(2) & (5) of the Town and Country Planning (Scotland) Act 1997, as amended by the Planning etc. (Scotland) Act 2006**

**TAKE NOTICE:**

1) **That pre-application consultation is to be undertaken by:** (insert name and contact details of prospective applicant – see note 1)

Name: **Scottish Hydro Electric Transmission plc**..... ,

Address: **Inveralmond House, 200 Dunkeld Road, Perth PH1 3AQ** .....

Telephone: **..07918 472528**.....E-mail: **sarah.cane-ritchie@sse.com**.....,

2) **represented in this matter by:** (if applicable, insert name and contact details of agent – see note 2)

Name: **N/A**

Address:

Telephone: E-mail

**for a prospective planning application for:** (insert general description of development – see note 3)

**National Development – Erection of electricity substation comprising platform area, control building, associated plant and infrastructure, ancillary facilities, access track(s), laydown area(s) and landscape works.**

3) **at:** (insert address of prospective development – see note 4)

**Crarae 275 kV Substation , land to the south west of the existing Crarae Substation reference E196140 N697498 as identified on the accompanying scale location plan.** (see note 5)

## SUBMISSION OF COMMENTS TO PRE-APPLICATION CONSULTATION:

- 4) If you wish to make comments about the prospective development these should be submitted to the prospective applicant at: (insert postal/e-mail address/telephone to which consultation comments should be submitted to the prospective applicant or their representative in this matter – see note 6):

Name **Helen Batey**,

Address: Inveralmond House, 200 Dunkeld Road, Perth, PH1 3AQ

Telephone: T: 01925 800833 M: +44(0)7778 453 993 E-mail **helen.batey@sse.com**,

- 5) **no later than:** (insert closing date for receipt of comments to 'PAC' – see note 7)

**9<sup>th</sup> December 2021**

*Note: PAC is undertaken by prospective applicants in advance of the submission of a formal planning application to Argyll and Bute Council. Comments in respect of a PAC exercise must be submitted to the PROSPECTIVE APPLICANT and should not be submitted to the planning authority at this time. Any correspondence received by Argyll and Bute Council's Planning Services in respect of a PAC exercise will be returned to the sender. Comments submitted to a prospective applicant at this time are not representations to the Planning Authority; in the event that the prospective applicant submits an application for planning permission then there would be an opportunity to make representations on that application following its submission to the Planning Authority.*

---

## SUMMARY OF PRE-APPLICATION CONSULTATION TO BE UNDERTAKEN BY THE PROSPECTIVE APPLICANT:

- 6) **Having regard to the requirements of Section 35B(2) of the Act, this notice has been served upon Argyll and Bute Council, Planning and Regulatory Services, Major Applications Unit, Dalriada House, Lochgilphead, PA31 8ST on:** (enter date notice served upon planning authority – see note 8)  
**03 September 2021**  
**from which a minimum of 12 weeks must elapse prior to the submission of a formal application for planning permission.**
- 7) **Those notified in terms of Regulation 7(1) of the Town and Country Planning (Development Management Procedure) (Scotland) Regulations 2008 are:** (insert details of relevant Community Council consultation – see note 9 – continue on a separate sheet if necessary)

<b>Community Council</b>	<b>Address</b>	<b>Date Notified</b>
Inveraray - Linda Divers	lindadivers00@gmail.com	03/09/21
Furnace - Lynda Syed	lynda.syed@btopenworld.com	03/09/21

	Continued on a Separate Sheet	
--	-------------------------------	--

- 8) **In addition to the requirements of Regulation 7(1), the following community stakeholders and other community interests have also been served notice:** (insert details of other relevant individuals/property/community organisations/consultees to be notified during 'PAC' – continue on a separate sheet if necessary – see note 10)

Other Community Interests	Address	Date Notified
<b>MSP</b> - Jenni Minto	Jenni.Minto.msp@parliament.scot	03/09/21
<b>MP</b> - Brendan O'Hara	brendan.ohara.mp@parliament.uk	03/09/21
<b>Councillors (Mid Argyll)</b>		
Donald Macmillan	donald.macmillan@argyll-bute.gov.uk	03/09/21
Douglas Philand	dougie.philand@argyll-bute.gov.uk	03/09/21
Sandy Taylor	sandy.taylor@argyll-bute.gov.uk	03/09/21

- 9) **Having regard to the requirements of Regulation 7(2) of the Town and Country Planning (Development Management Procedure) (Scotland) Regulations 2008 a public event where members of the public may make comments to the prospective applicant/agent as regards the proposed development will be held at:**  
(insert details of public event location(s)/venue(s) – see note 11)

Public Event	Venue	Time(s) & Date(s)
Public Consultation	Cairnbaan Hotel Lochgilphead	Thursday 18 <sup>th</sup> November 2021 13:00 until 19:00



**10) the full details of which shall be published a minimum of 7 days in advance in:**  
(insert name of publication local to development site/location of public event(s) – see note 12)

<b>Publication</b>	<b>Date Published</b>
Oban Times	4 <sup>th</sup> & 5 <sup>th</sup> November 2021

**11) In addition to the above it is also proposed to undertake the following additional forms and types of consultations:** (insert details of who is to be consulted, form of consultation, date and time consultation will be undertaken – continue on another sheet if necessary - see note 13)

The event will be advertised in advance and a postcard drop containing full details of the event and access information, alongside details of how to obtain copies of the event boards/project proposals will be delivered to all addresses within 5km of the site.

Information will be made available on the project website and on SSE social media channels throughout the consultation period.

Direct contact with Community Councils will be made to offer attendance to meetings to provide more information if appropriate.

SSEN Transmission social media sites will be utilised and a press release will be issued in advance of events.

---

## 12) DECLARATION

I hereby certify that I, the prospective applicant/agent, have given correct and complete information and given the requisite notice to all parties listed above in respect of the requirements of S35B of the Act.

**SIGNATURE OF PROSPECTIVE APPLICANT/AGENT:** Redacted

**PRINT NAME:** Sarah Cane-Ritchie

**DATED:** 03/09/21

Continuation of PAN Form for Crarare 275 kV Substation

**7) Those notified in terms of Regulation 7(1) of the Town and Country Planning (Development Management Procedure) (Scotland) Regulations 2008 are:**

<b>Community Council</b>	<b>Address</b>	<b>Date Notified</b>
West Lochfyne - Fred Bruce	<a href="mailto:gairdeeloch@gmail.com">gairdeeloch@gmail.com</a>	03/09/21
Lochgilphead - Andy Buntin	<a href="mailto:andy.buntin1@btinternet.com">andy.buntin1@btinternet.com</a>	03/09/21
Dunadd - Jim Malcolm	<a href="mailto:jgmalcolm@btinternet.com">jgmalcolm@btinternet.com</a>	03/09/21
Strachur and District	<a href="mailto:cecis.farmlet@gmail.com">cecis.farmlet@gmail.com</a> <a href="mailto:kirstie.reid1@btinternet.com">kirstie.reid1@btinternet.com</a>	03/09/21

Form provided by



This form should be used by prospective applicants to serve notice to both the Planning Authority and other relevant persons/community groups/agencies that 'PAC' is to be undertaken in respect of a prospective planning application.

For Official Use Only
Date Received:
.....
Ref:
.....

**Pre-Application Consultation ('PAC') - Proposal of Application Notice**

**Requisite Notice under Section 35B(2) & (5) of the Town and Country Planning (Scotland) Act 1997, as amended by the Planning etc. (Scotland) Act 2006**

**TAKE NOTICE:**

1) **That pre-application consultation is to be undertaken by:** (insert name and contact details of prospective applicant – see note 1)

Name: **Scottish Hydro Electric Transmission plc**..... ,

Address: **Inveralmond House, 200 Dunkeld Road, Perth PH1 3AQ** .....

Telephone: **..07918 472528**.....E-mail: **sarah.cane-ritchie@sse.com**..... ,

2) **represented in this matter by:** (if applicable, insert name and contact details of agent – see note 2)

Name: **N/A**

Address:

Telephone: E-mail

**for a prospective planning application for:** (insert general description of development – see note 3)

**National Development – Erection of electricity substation comprising platform area, control building, associated plant and infrastructure, ancillary facilities, access track(s), laydown area(s) and landscape works.**

3) **at:** (insert address of prospective development – see note 4)

**Crarae 275 kV Substation , land to the south west of the existing Crarae Substation reference E196140 N697498 as identified on the accompanying scale location plan.** (see note 5)

## SUBMISSION OF COMMENTS TO PRE-APPLICATION CONSULTATION:

- 4) If you wish to make comments about the prospective development these should be submitted to the prospective applicant at: (insert postal/e-mail address/telephone to which consultation comments should be submitted to the prospective applicant or their representative in this matter – see note 6):

Name **Caitlin Quinn**,

Address: Inveralmond House, 200 Dunkeld Road, Perth, PH1 3AQ

Telephone: M:07901 135758 E-mail **Caitlin.Quinn@sse.com**,

- 5) **no later than:** (insert closing date for receipt of comments to 'PAC' – see note 7)

**10<sup>th</sup> January 2022**

*Note: PAC is undertaken by prospective applicants in advance of the submission of a formal planning application to Argyll and Bute Council. Comments in respect of a PAC exercise must be submitted to the PROSPECTIVE APPLICANT and should not be submitted to the planning authority at this time. Any correspondence received by Argyll and Bute Council's Planning Services in respect of a PAC exercise will be returned to the sender. Comments submitted to a prospective applicant at this time are not representations to the Planning Authority; in the event that the prospective applicant submits an application for planning permission then there would be an opportunity to make representations on that application following its submission to the Planning Authority.*

---

## SUMMARY OF PRE-APPLICATION CONSULTATION TO BE UNDERTAKEN BY THE PROSPECTIVE APPLICANT:

- 6) **Having regard to the requirements of Section 35B(2) of the Act, this notice has been served upon Argyll and Bute Council, Planning and Regulatory Services, Major Applications Unit, Dalriada House, Lochgilphead, PA31 8ST on:** (enter date notice served upon planning authority – see note 8)  
**18<sup>th</sup> October 2021**  
**from which a minimum of 12 weeks must elapse prior to the submission of a formal application for planning permission.**
- 7) **Those notified in terms of Regulation 7(1) of the Town and Country Planning (Development Management Procedure) (Scotland) Regulations 2008 are:** (insert details of relevant Community Council consultation – see note 9 – continue on a separate sheet if necessary)

<b>Community Council</b>	<b>Address</b>	<b>Date Notified</b>
Inveraray - Linda Divers	lindadivers00@gmail.com	18/10/21
Furnace - Lynda Syed	lynda.syed@btopenworld.com	18/10/21

	Continued on a Separate Sheet	
--	-------------------------------	--

- 8) **In addition to the requirements of Regulation 7(1), the following community stakeholders and other community interests have also been served notice:** (insert details of other relevant individuals/property/community organisations/consultees to be notified during 'PAC' – continue on a separate sheet if necessary – see note 10)

Other Community Interests	Address	Date Notified
<b>MSP</b> - Jenni Minto	Jenni.Minto.msp@parliament.scot	18/10/21
<b>MP</b> - Brendan O'Hara	brendan.ohara.mp@parliament.uk	18/10/21
<b>Councillors (Mid Argyll)</b>		
Donald Macmillan	donald.macmillan@argyll-bute.gov.uk	18/10/21
Douglas Philand	dougie.philand@argyll-bute.gov.uk	18/10/21
Sandy Taylor	sandy.taylor@argyll-bute.gov.uk	18/10/21

- 9) **Having regard to the requirements of Regulation 7(2) of the Town and Country Planning (Development Management Procedure) (Scotland) Regulations 2008 a public event where members of the public may make comments to the prospective applicant/agent as regards the proposed development will be held at:**  
(insert details of public event location(s)/venue(s) – see note 11)

Public Event	Venue	Time(s) & Date(s)
Public Consultation	Cairnbaan Hotel Lochgilphead	Thursday 2 <sup>nd</sup> December 2021 13:00 until 19:00
Virtual Event	Virtual consultation room	8 <sup>th</sup> December 2021 10:00 - 12:00 9 <sup>th</sup> December 2021 - 17:00 - 19:00
Access to the room and any other Information can be accessed on the project webpage <a href="https://www.ssen-transmission.co.uk/projects/argyll-and-kintyre-275kv-substations">https://www.ssen-transmission.co.uk/projects/argyll-and-kintyre-275kv-substations</a>		

**10) the full details of which shall be published a minimum of 7 days in advance in:**  
(insert name of publication local to development site/location of public event(s) – see note 12)

<b>Publication</b>	<b>Date Published</b>
Oban Times	18 <sup>th</sup> & 19 <sup>th</sup> November 2021

**11) In addition to the above it is also proposed to undertake the following additional forms and types of consultations:** (insert details of who is to be consulted, form of consultation, date and time consultation will be undertaken – continue on another sheet if necessary - see note 13)

The event will be advertised in advance and a postcard drop containing full details of the event and access information, alongside details of how to obtain copies of the event boards/project proposals will be delivered to all addresses within 5km of the site.

Information will be made available on the project website and on SSE social media channels throughout the consultation period.

Direct contact with Community Councils will be made to offer attendance to meetings to provide more information if appropriate.

SSEN Transmission social media sites will be utilised and a press release will be issued in advance of events.

---

## 12) DECLARATION

I hereby certify that I, the prospective applicant/agent, have given correct and complete information and given the requisite notice to all parties listed above in respect of the requirements of S35B of the Act.

**SIGNATURE OF PROSPECTIVE APPLICANT/AGENT:** Redacted

**PRINT NAME:** Sarah Cane-Ritchie

**DATED:** 18/10/21

Continuation of PAN Form for Crarare 275 kV Substation

**7) Those notified in terms of Regulation 7(1) of the Town and Country Planning (Development Management Procedure) (Scotland) Regulations 2008 are:**

<b>Community Council</b>	<b>Address</b>	<b>Date Notified</b>
West Lochfyne - Fred Bruce	<a href="mailto:gairdeeloch@gmail.com">gairdeeloch@gmail.com</a>	18/10/21
Lochgilphead - Andy Buntin	<a href="mailto:andy.buntin1@btinternet.com">andy.buntin1@btinternet.com</a>	18/10/21
Dunadd - Jim Malcolm	<a href="mailto:jgmalcolm@btinternet.com">jgmalcolm@btinternet.com</a>	18/10/21
Strachur and District	<a href="mailto:cecis.farmlet@gmail.com">cecis.farmlet@gmail.com</a> <a href="mailto:kirstie.reid1@btinternet.com">kirstie.reid1@btinternet.com</a>	18/10/21

## **APPENDIX 2: PRESS ADVERT POSTER AND MAILDROP**



# Argyll and Kintyre 275kV Substations Planning Applications

## Public Consultation Events November/December 2021

**SEEN Transmission invites you to come and share your views with us**

### What is happening?

SEEN Transmission is holding a series of Public Consultation Events to gain views and feedback on our planning application to construct four new 275 kV electricity substations at the following locations:

- In the vicinity of the existing An Suidhe substation
- In the vicinity of the existing Crarae substation
- In the vicinity of Craig Murrail, north of Lochgilphead; and
- In the vicinity of the existing Crossaig substation

This follows our previous consultation on the project within the Argyll and Kintyre 275 kV Strategy consultations in July 2021. The Report on Consultation, which documents the feedback we've received and the choice of preferred site, is available to view on the project webpage.

### Why are the new substations required?

Due to the increase in renewable energy generation in Argyll, some of the existing network needs to be upgraded and reinforced to ensure supply and support the transition to net zero emissions. A replacement overhead line between Inveraray and Crossaig is currently being constructed. This new line will initially operate at 132 kV, which is the same voltage as the existing line. It has been designed to eventually operate at 275 kV to support the requirement to connect renewable generation to the electricity network. The substations included in this Public Consultation Event are required to allow the overhead line to operate at 275kV.

For further information on the proposals, please visit our dedicated project website or contact Helen Batey, Community Liaison Manager.

**Helen Batey**

Scottish and Southern Electricity Networks, Inveralmond House, 200 Dunkeld Road, Perth, PH1 3AQ

[Helen.Batey@sse.com](mailto:Helen.Batey@sse.com) / 01925 800 833

## Come and meet us here:

**Tuesday 30th November 2021 (1:00pm - 7:00pm)**

Loch Fyne Hotel for An Suidhe substation

**Wednesday 1st December 2021 (1:00pm - 7:00pm)**

Carradale Village Hall for Crossaig North substation

**Thursday 2nd December 2021 (1:00pm - 7:00pm)**

Cairnbaan Hotel Lochgilphead for Craig Murrail and Crarae substations

.....

**Or join us online, via the project webpage, to chat with the project team using live Instant Message chat at the following times for all the substations:**

**Wednesday 8th December 2021 (10:00am-12:00 noon)**

**Thursday 9th December 2021 (5:00pm - 7:00pm)**

For further information about the project & the planning applications, access to the virtual consultation room and the feedback form can be found on the project webpage:

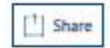


<https://www.ssen-transmission.co.uk/projects/argyll-and-kintyre-275kv-substations/>

We kindly request that feedback forms are submitted by **Monday 10th January 2022**

## **APPENDIX 3: ARGYLL SUBSTATIONS 275 KV WEBSITE**

# Argyll and Kintyre 275kV Substations



- Project overview**
- Project updates
- Project documentation

Project Type: Transmission reinforcement  
Location: Argyll & Bute

### Contact Details

<b>Liaison Manager</b>	<b>Land Manager</b>
<b>Caitlin Quinn</b> Title: Community Liaison Manager Email: <a href="mailto:caitlinquinn@sse.com">caitlinquinn@sse.com</a> Telephone: 07901 135 758	



### Latest

- 
**SSE Transmission nominated for two national accolades at Utility Week Awards**  
 Date: 04 Nov 2021  
[View article](#) / [View all articles](#)
- 
**Argyll and Kintyre 275kV Strategy**  
[Find out more](#)
- 
**Sheldrum Wind Farm Connection**  
[Share your views](#)



### About the project

Due to the projected increase in renewable energy generation in Argyll, a need has been identified for the upgrade and reinforcement of the electricity transmission network on the Argyll peninsula to ensure supply and support the transition to net zero emissions.

As described during the development process for the Inveraray – Crossaig overhead line rebuild, the replacement overhead line is being built at a higher 275 kV voltage, initially operating at 132 kV between Inveraray and Crossaig.

As future renewable generation connects to the electricity network and the operating voltage is required to increase to 275 kV, substations along the route will

also require to be replaced in order to accommodate this voltage increase.

We are therefore proposing to construct and operate four (4) new 275 kV electricity substations at the following locations:

## **APPENDIX 4: ARGYLL SUBSTATIONS 275 KV CONSULTATION BROCHURE**

Can be found at: <https://www.ssen-transmission.co.uk/media/6118/argyll-and-kintyre-275kv-substations-pre-application-consultation-final01.pdf>

# Argyll and Kintyre 275kV Strategy Consultation Booklet

November/December 2021

## Share your views with us:



We are launching a pre-application consultation exhibition to gain views and feedback on our proposals for:

- The Argyll and Kintyre 275kV Substations Planning Application. The Substations were consulted on as part of the Argyll and Kintyre 275kV Strategy consultations in July 2021.
- The proposed Sheirdrim Windfarm Connection project.

Information on our proposals is available within this consultation booklet and we also invite you to attend our virtual consultation events where you can view our proposals online using our virtual consultation room.

Live IM chats with the project team will be held on the following dates and times:

**Wednesday 8th December 2021 -10-12 Noon**

**Thursday 9th December 2021 - 5-7pm**

This brochure, the Argyll and Kintyre 275kV Substations Report on Consultation from the July 2021 consultation, access to the virtual room and any other information can be accessed on the project webpage: [www.ssen-transmission.co.uk/projects/argyll-and-kintyre-275kv-substations/](http://www.ssen-transmission.co.uk/projects/argyll-and-kintyre-275kv-substations/)



**Scottish & Southern**  
Electricity Networks

TRANSMISSION



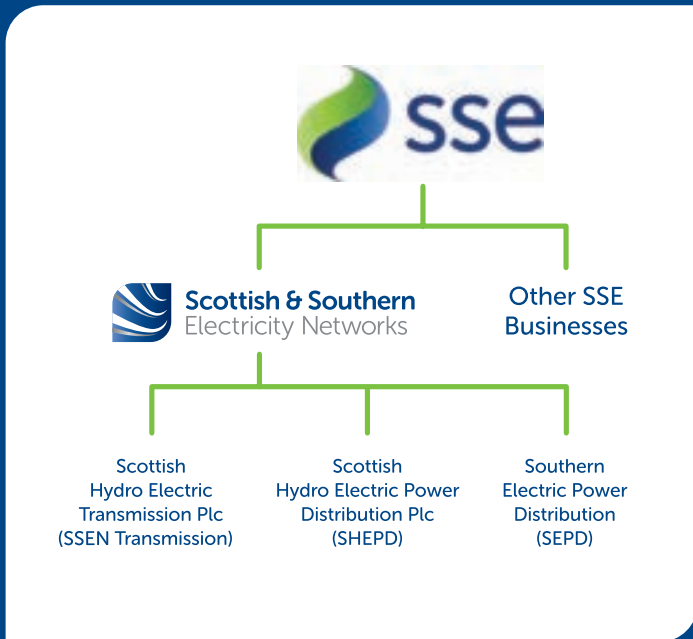
## Contents

- 04 Who We Are
- 05 The Argyll and Kintyre 275kV Strategy
- 06 The Argyll and Kintyre 275kV Substations
- 07 Technology Options
- 08 An Suidhe Substation
- 10 Crarae Substation
- 12 Craig Murrail Substation
- 14 Crossaig North Substation Design
- 16 Next Steps
- 17 Sheirdrim Wind Farm  
Connection Consultation
- 20 What else is happening in Argyll?
- 22 How do I have my say?
- 23 Your feedback



# Who We Are

We are Scottish and Southern Electricity Networks, operating under licence as Scottish Hydro Electric Transmission plc (SSEN Transmission) for the transmission of electricity in the North of Scotland.



## What is the difference between Transmission and Distribution?

Electricity Transmission is the transportation of electricity from generating plants to where it is required at centres of demand. The Electricity Transmission network, or grid, transports electricity at very high voltages through overhead lines (OHL), underground cables (UCG) and subsea cables. Our transmission network connects large scale generation, primarily renewables, to central and southern Scotland and the rest of Great Britain. It also helps secure supply by providing reliable connection to the wider network of generation plans.

The Electricity Distribution network is connected into the Transmission network but the voltage is lowered by transformers at electricity substations, and the power is then distributed to homes and businesses through overhead lines or underground cables.

In total we maintain about 5,000km of overhead lines and underground cables – easily enough to stretch across the Atlantic from John O’Groats all the way to Boston in the USA.

Our network crosses some of the UK’s most challenging terrain – including circuits that are buried under the seabed, are located over 750m above sea level and up to 250km long.

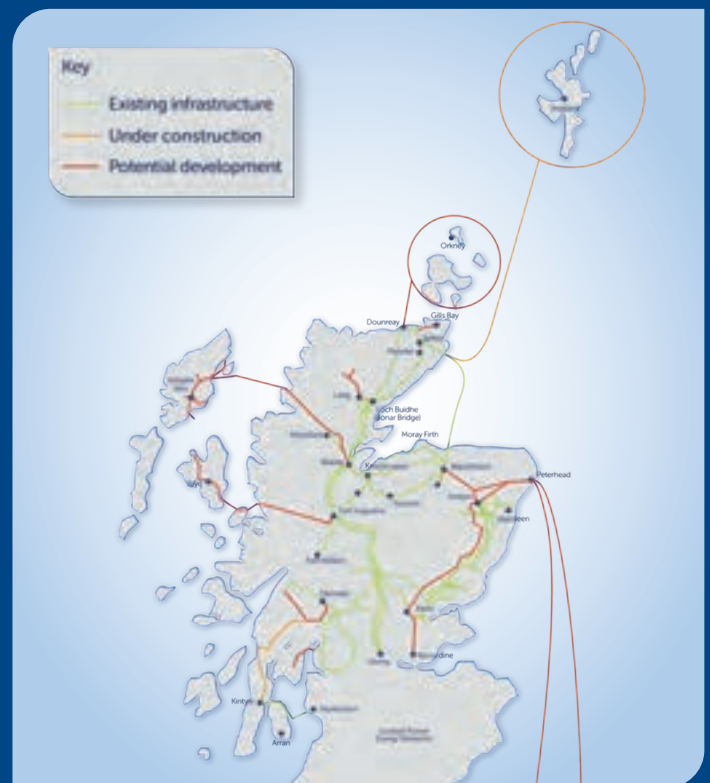
The landscape and environment that contribute to the challenges we face also give the area a rich resource for renewable energy generation. There is a high demand to connect from new wind, hydro and marine generators which rely on Scottish and Southern Electricity Networks to provide a physical link between the new sources of power and electricity users. Scottish and Southern Electricity Networks is delivering a major programme of investment to ensure that the network is ready to meet the needs of our customers in the future.

## Our responsibilities

We have a licence for the transmission of electricity in the north of Scotland and we are closely regulated by the energy regulator the Office of Gas and Electricity Markets (Ofgem).

Our licence stipulates that we must develop and maintain an efficient, co-ordinated and economical system of electricity transmission.

## Overview of Transmission Projects



# The Argyll and Kintyre 275kV Strategy

The original transmission network in Argyll and Bute was constructed over 60 years ago and designed to transmit electricity to consumers in rural areas of low-density population.

As the UK strives for Net Zero (achieving a balance between the greenhouse gases put into the atmosphere and those taken out), SSEN Transmission has seen a significant increase in generator connection applications in Argyll and Kintyre in the last 18 months, predominantly in renewable generation.

In terms of this renewable generation (i.e., windfarms), there are infrastructure requirements needed to connect generators to our Transmission network.

This means we need to increase our network capability in Argyll and Kintyre, beyond that already under current construction and public development, to enable the connection of further renewable generation and to export to the wider GB network.

We have called this group of works designed to deliver the required increase in network capacity our 'Argyll and Kintyre 275kV Strategy'.

Our Argyll and Kintyre 275kV Strategy consists of 3 projects which are at various stages of consenting and public consultation process:



**Creag Dhubh**  
Dalmally 275kV Connection



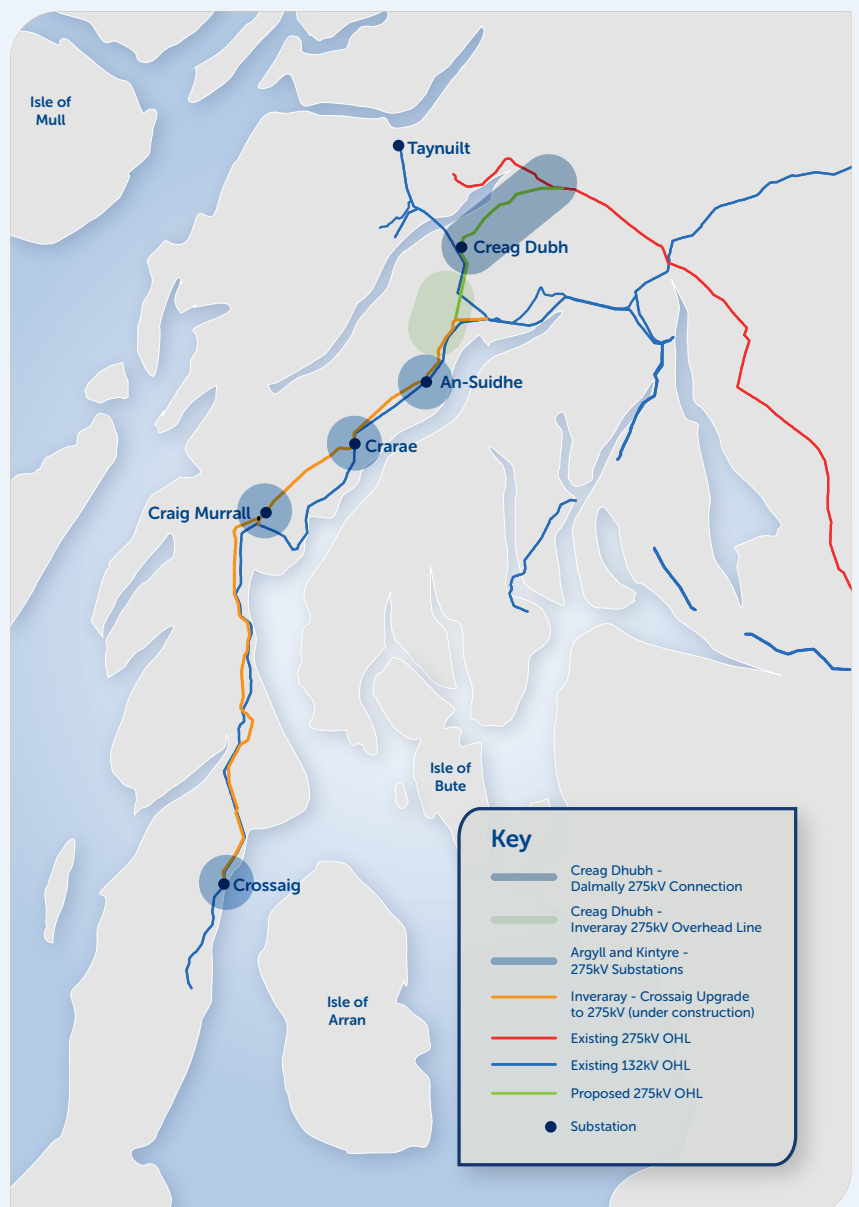
**Creag Dhubh**  
Inveraray 275kV Overhead Line



**Argyll and Kintyre**  
275kV Substations

To find out more about the Strategy as a whole, and sign up for updates, please visit:

[www.ssen-transmission.co.uk/projects/argyll-and-kintyre-275kv-strategy/](http://www.ssen-transmission.co.uk/projects/argyll-and-kintyre-275kv-strategy/)



# Argyll and Kintyre 275kV Substations

## About the project

### Project Need

Due to the projected increase in renewable energy generation in Argyll, a need has been identified for the upgrade and reinforcement of the electricity transmission network on the Argyll peninsula to ensure supply and support the transition to net zero emissions.

As described during the development process for the Inveraray – Crossaig overhead line rebuild, the replacement overhead line is being built at a higher 275kV voltage, initially operating at 132kV between Inveraray and Crossaig. As future renewable generation requirements connect to the electricity network and the operating voltage is required to increase to 275kV, substations along the route will also require to be replaced to accommodate this increase.

### Project Overview

We are therefore proposing to construct and operate four (4) new 275kV electricity substations at the following locations:

- in the vicinity of the existing An Suidhe substation;
- in the vicinity of the existing Crarae substation;
- in the vicinity of Craig Murrail, north of Lochgilphead; and
- in the vicinity of the existing Crossaig substation.

**Once the 275kV substations are constructed, the existing 132kV substations at An Suidhe and Crarae will be decommissioned, with Port Ann and Crossaig substations being retained.**

The selection of the preferred site was undertaken as a combination of the environment, engineering and cost assessment scoring and the Preferred Site Options were selected was taken forward for consultation and detailed design in July 2021. Since the consultation events, the Preferred Site Options have undergone further assessment and design resulting in minor changes taking into consideration key constraints.

We are intending on submitting our Town and Country Planning (Scotland) Act 1997 application for consent to Argyll and Bute Council in Spring 2022. This will follow our review of the feedback we receive during the consultation period.

Three of the substations will also require consent from the Scottish Governments Energy Consent Unit, through Section 37 of the Electricity Act 1989. This will cover all aspects relating to the overhead line works associated with our proposals.

These works comprise of a limited number of diversions and 'tie ins' which relate to ongoing reinforcements associated with the Inveraray to Crossaig transmission network.

**The following pages outline the proposals that we are seeking to take forward to Planning and Section 37 application submission, on which your feedback is sought.**

- Technology Options (**page 7**)
- An Suidhe Substation (**page 8**)
- Crarae Substation (**page 10**)
- Craig Murrail Substation (**page 12**)
- Crossaig North Substation (**page 14**)

# Technology Options

Following the consultation process and a technology options review, it was determined that an Air Insulated Switchgear (AIS) substation was the preferred solution to meet decarbonisation goals that we have committed to in our RIIO-T2 business plan: ([www.ssen-transmission.co.uk/media/3761/a-network-for-net-zero-final-business-plan.pdf](http://www.ssen-transmission.co.uk/media/3761/a-network-for-net-zero-final-business-plan.pdf)).

The alternative option to AIS is known as Gas Insulated Switchgear (GIS). GIS substations are smaller in size to an AIS substation. However, GIS substations utilise Sulphur Hexafluoride (SF<sub>6</sub>) as an insulator in both the switchgear bay and the circuit breaker. SF<sub>6</sub> is a very high global warming potential greenhouse gas.

However, innovation in switchgear technology may provide SSEN Transmission with an opportunity to consider a GIS substation that does not use SF<sub>6</sub> gas. This would allow us to reduce the size of our substation footprint, the height of the control building and the extent of associated works, which are currently proposed under an AIS solution.

# An Suidhe Substation

## Components of the Proposed Development that will be subject to Town and Country Planning

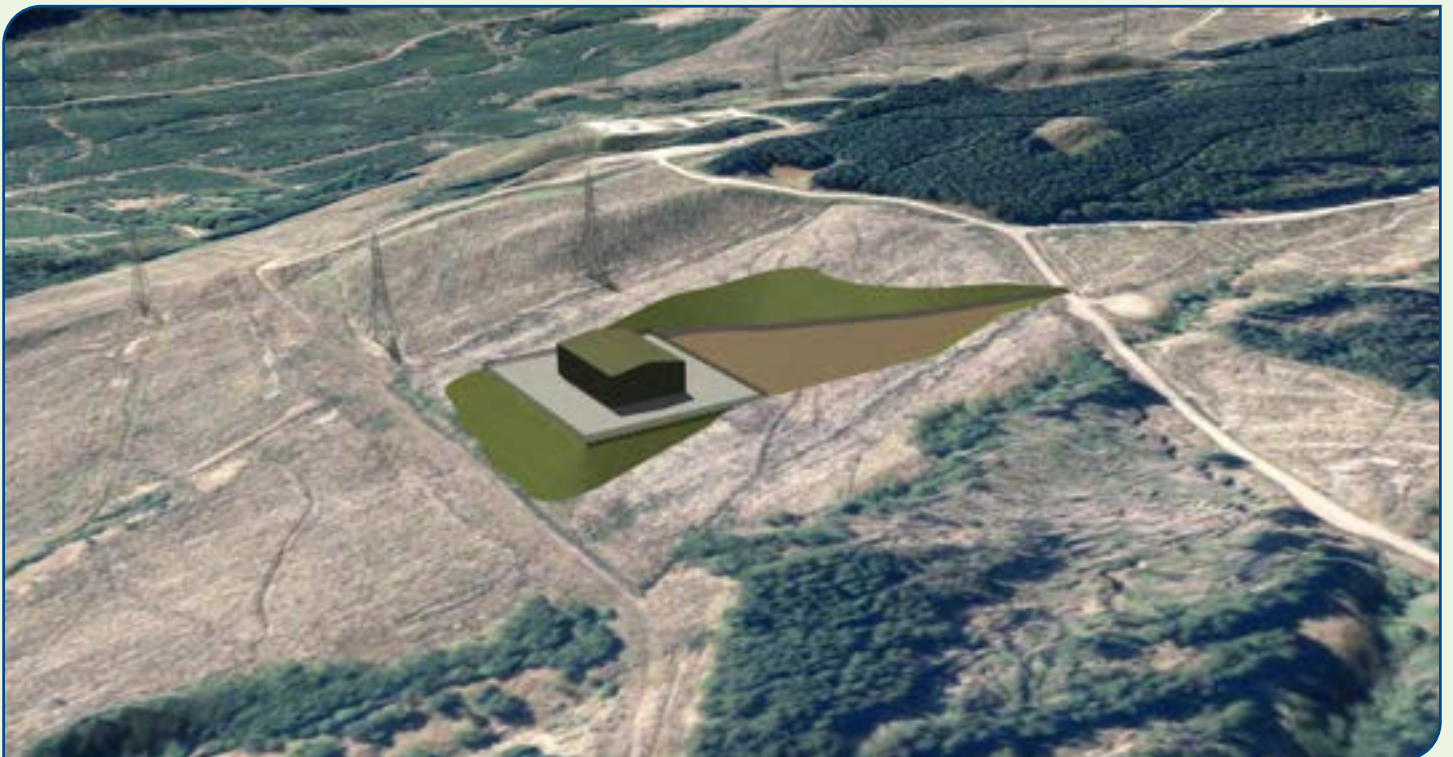
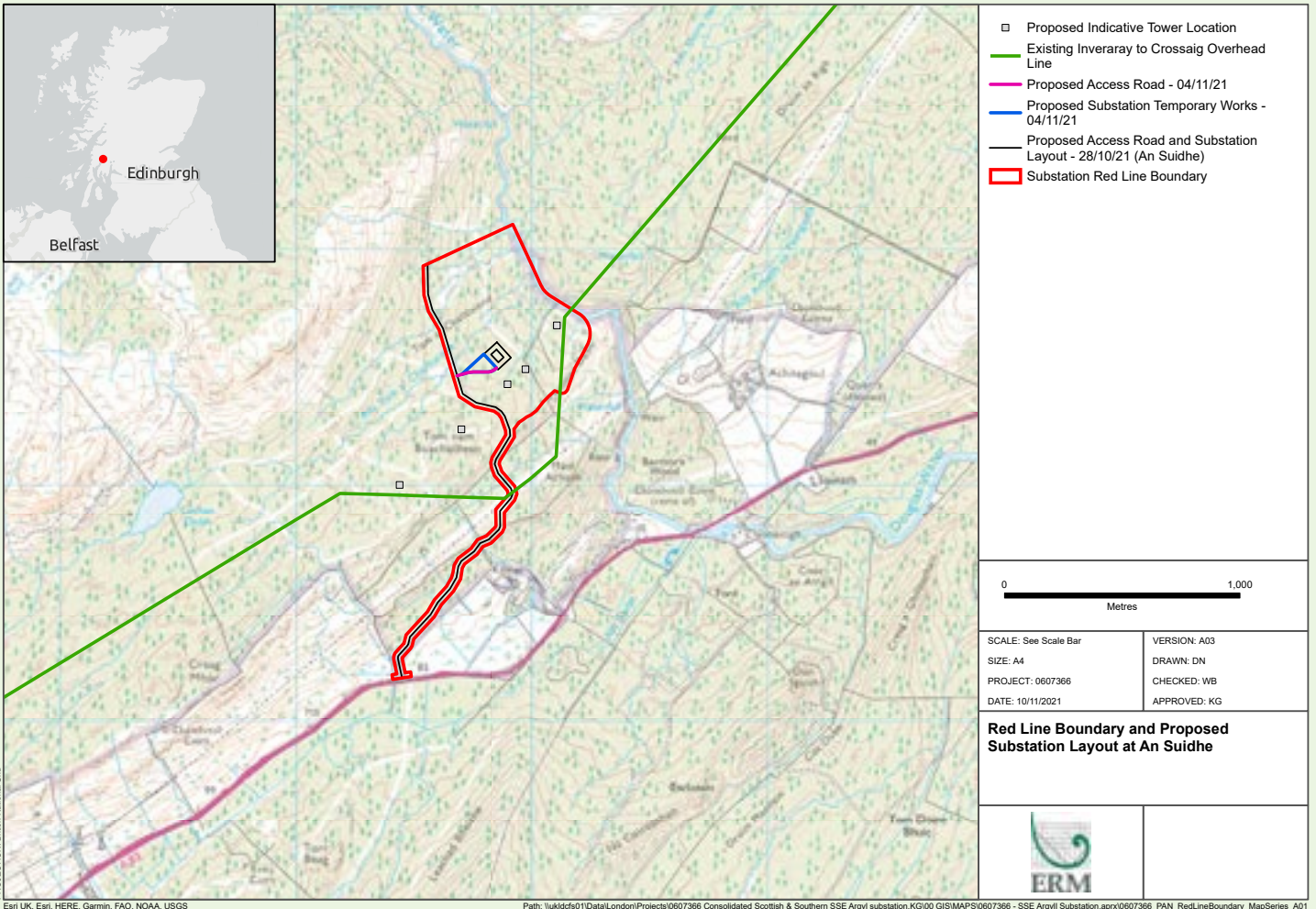
- A level platform of up to 0.6 ha (excluding cut/fill required to tie the platform into existing ground levels);
- Gas-insulated switchgear (GIS) comprising of a control building (likely to be 31m by 45m with an approximate height of 15m), infrastructure, electrical equipment and Internal roads, access paths, and hardstanding areas within the substation compound;
- The site would be surrounded by a 2.4m high security fence of palisade construction with CCTV surveillance;
- Upgrading approximately 2.5km of existing access tracks and new access tracks (length to be confirmed);
- Formation of a temporary works area and construction laydown areas;
- Associated landscaping works and felling of approximately 7.5ha commercial forestry; and
- Drainage, including attenuation basins (SuDS ponds), the number to be confirmed.

## Components of the Associated Development subject to Section 37 of the Electricity Act 1989

- Approximately five towers will be required to make the connection into and out of the proposed substation;
- Potential for short term temporary overhead line diversions during construction; Temporary works areas (where possible, the main site compound will be shared with the substation above); and
- Dismantling of seven redundant towers.

## Key Environmental Considerations

- Glen Etive and Glen Fyne SPA is over 10km to the north east. There are no sites within 5km designated for habitat.
- The majority of the Proposed Development is within commercial coniferous plantation of low ecological and conservation value. There is an area of semi-natural broadleaved woodland, which is of higher ecological importance than the surrounding conifer habitat. There are no Ground Water Dependent Terrestrial Ecosystems (GWDTEs) or Annex 1 habitats present.
- The Proposed Development is not within a nationally or locally designated landscape. It is 1.8km east of a locally designated landscape, West Loch Fyne (Coast) Area of Panoramic Quality (APQ) and 4.6km north east of the East Loch Fyne (Coast) APQ. The closest residential receptors are approximately 700 m downslope.
- The proximity and character of designated assets within 2km of the Proposed Development has potential to result in indirect impacts resulting from changes to setting. These include Category B listed Claonairigh House approximately 2km to the south and the Inveraray Castle Garden and Designated Landscape.
- The closest watercourse is Douglas Water, 300m east of the Proposed Development. The SEPA flood map indicates that the Proposed Development contains very small pockets of high-medium likelihood surface water flooding.
- The nearest noise sensitive receptor is approximately 700m from the Proposed Development.
- With the implementation of mitigation that will be agreed with Argyll and Bute Council the Proposed Development is not considered likely to have a significant effect upon the environment and local receptors during construction and operation.



# Crarae Substation

## Components of the Proposed Development that will be subject to Town and Country Planning

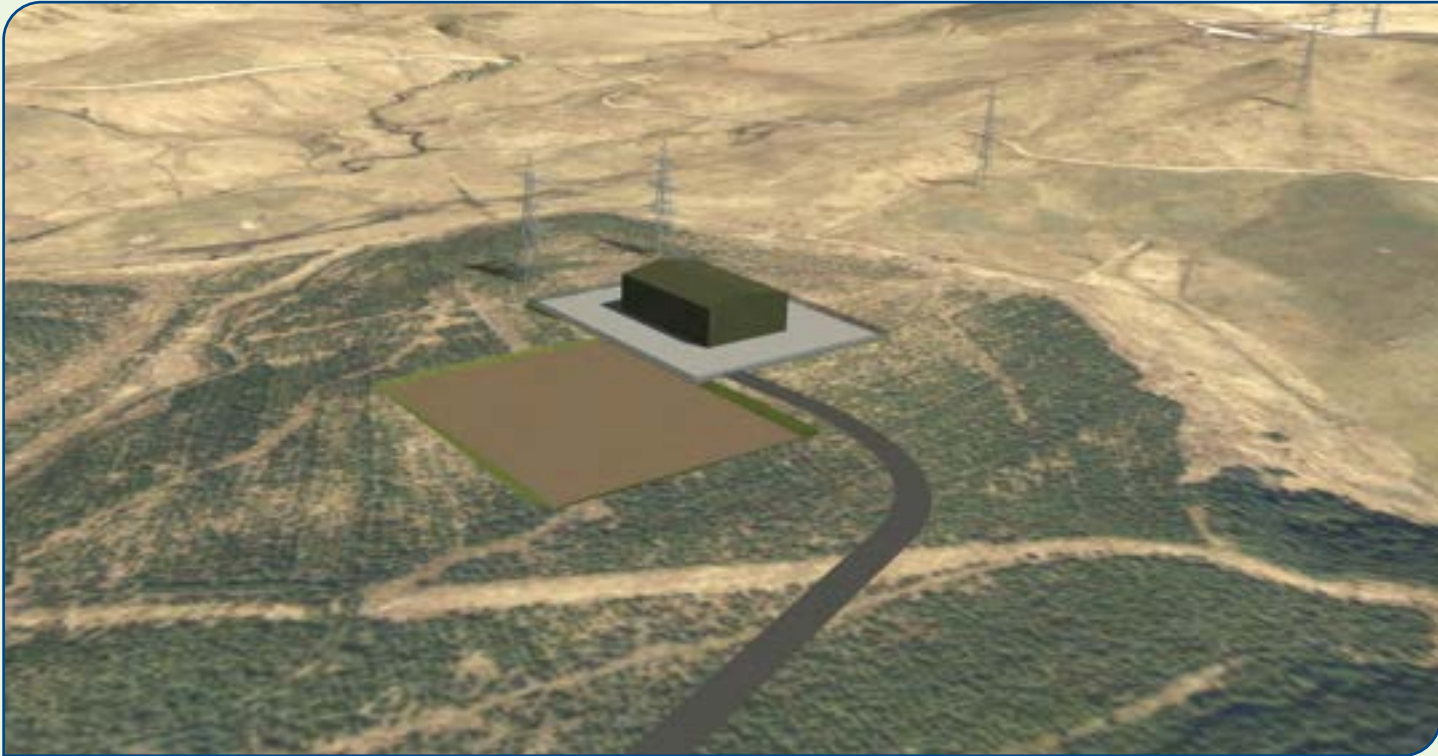
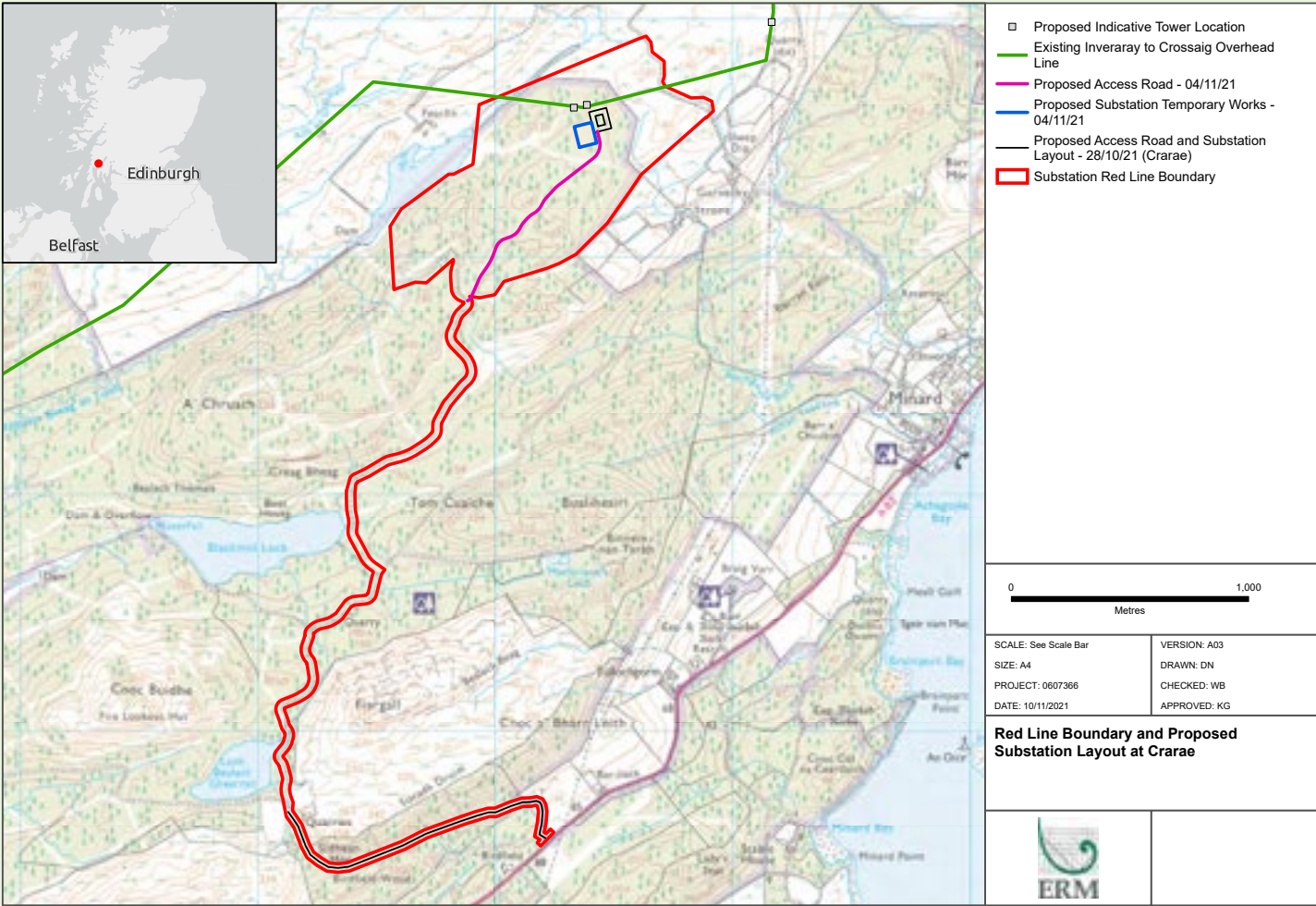
- A level platform of up to 0.6 ha (excluding cut/fill required to tie the platform into existing ground levels);
- Gas-insulated switchgear (GIS) comprising of a control building (likely to be 31m by 45m with an approximate height of 15m), infrastructure, electrical equipment and Internal roads, access paths, and hardstanding areas within the substation compound;
- The site would be surrounded by a 2.4m high security fence of palisade construction with CCTV surveillance;
- Upgrading approximately 4.5km of existing access tracks and new access tracks (length to be confirmed)
- Formation of a temporary works area and construction laydown areas;
- Associated landscaping works and felling approximately 3 ha of commercial forestry; and
- Drainage, including attenuation basins (SuDS ponds), the number to be confirmed.

## Components of the Associated Development subject to Section 37 of the Electricity Act 1989

- Approximately three towers will be required to make the connection into and out of the proposed substation;
- Potential for short term temporary overhead line diversions during construction;
- Temporary works areas (where possible, the main site compound will be shared with the substation above); and
- Dismantling of three redundant towers.

## Key Environmental Considerations

- The Proposed Development is within commercial coniferous plantation of low ecological and conservation value though there is potential for red squirrel dreys.
- There is an area of marshy grassland within the site which has potential for Ground Water Dependent Terrestrial Ecosystems (GWDTEs) and further assessment will be undertaken to confirm this.
- Knapdale Loch SPA is over 17km to the west. There are no sites within 5km designated for habitat.
- The Proposed Development does not sit within a nationally designated landscape. The Proposed Development is approximately 1.6km west of a locally designated landscape, West Loch Fyne (coast) Area of Panoramic Quality (APQ) and 4km west of East Loch Fyne (coast) APQ. The closest residential receptors are over 500m down slope.
- Crarae Garden and Designed Landscape is approximately 1.8km to the east. Crarae Lodge scheduled monument is approximately 2.4km to the south east. Brainport Bay scheduled monuments are approximately 2.5km to the south. Minard Castle Category B listed building is approximately 3km to the south. the presence of intervening forestry and the separation distance suggests that there will be no significant effects on the setting of designated assets.
- The closest watercourse is Abhainn Bhaeg An Tunns, adjacent to the Proposed Development. The SEPA flood map indicates that the Proposed Development contains very small pockets of high- medium likelihood surface water flooding.
- The nearest noise sensitive receptor is approximately 500m from the Proposed Development.
- With the implementation of mitigation that will be agreed with Argyll and Bute Council the Proposed Development is not considered likely to have a significant effect upon the environment and local receptors during construction and operation.





# Craig Murrail Substation

## Components of the Proposed Development that will be subject to Town and Country Planning

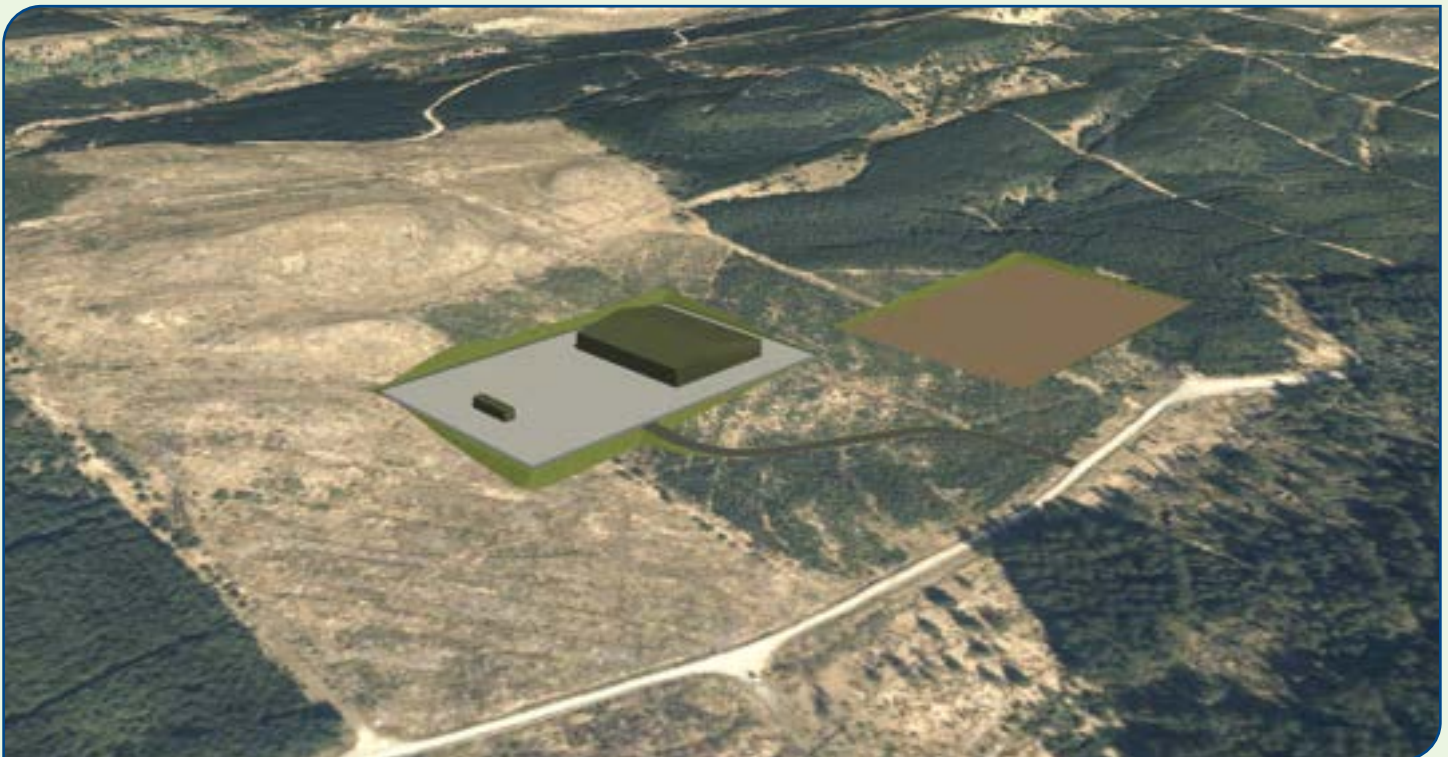
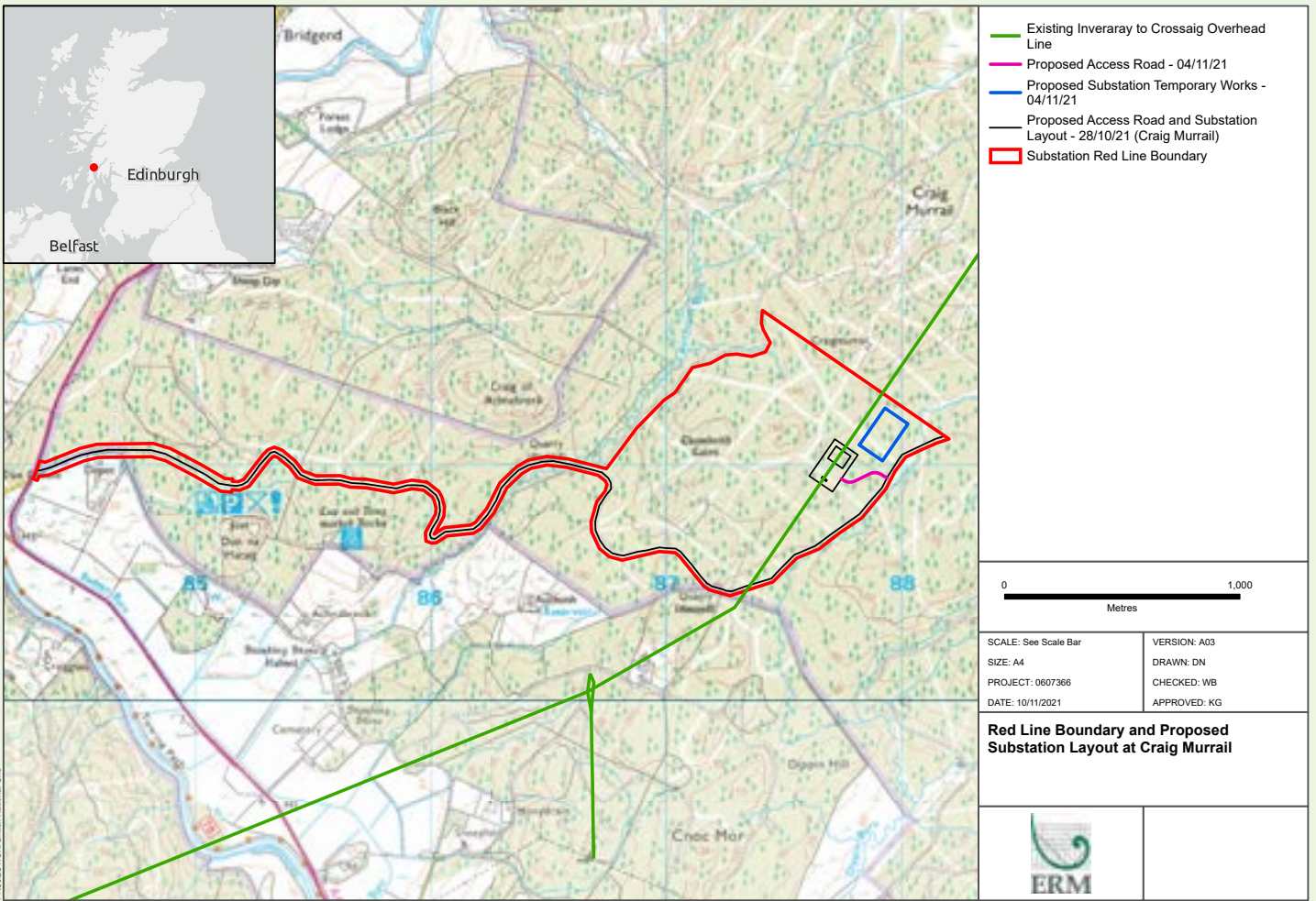
- A level platform of up to 0.8 ha (excluding cut/fill required to tie the platform into existing ground levels);
- Gas-insulated switchgear (GIS) comprising of a control building (likely to be 31m by 66m with an approximate height of 15m), infrastructure, electrical equipment and Internal roads, access paths, and hardstanding areas within the substation compound. with an approximate height of 15m);
- 33kV Switchroom building (likely to be 20m by 6m);
- The site would be surrounded by a 2.4m high security fence of palisade construction with CCTV surveillance;
- Upgrading approximately 5.1km of existing access tracks and new access tracks (length to be confirmed);
- Formation of temporary site compounds and construction laydown areas;
- Associated landscaping works and felling of approximately 0.5 ha of commercial forestry; and
- Drainage, including attenuation basins (SuDS ponds), the number to be confirmed.

## Components of the Associated Development subject to Section 37 of the Electricity Act 1989

- Approximately three towers will be required to make the connection into and out of the proposed substation;
- Potential for short term temporary overhead line diversions during construction;
- Temporary works areas (where possible, the main site compound will be shared with the substation above); and
- Dismantling of three redundant towers.

## Key Environmental Considerations

- The majority of the Proposed Development is commercial coniferous plantation of low ecological and conservation value. An area of mature conifer woodland is present with potential for red squirrel species.
- Moine Mhor SAC, SSSI and LNCS is 4km to the east. Tainish and Knapdale Woods SAC and SSSI is 7km to the east. Knapdale Loch SPA & SSSI is 7km to the south east. Lochgilphead LNCS is 3.5km to the south. Loch Leathan LNCS is 6.9km north.
- The Proposed Development does not sit within a nationally or locally designated landscape. It is approximately 1.8km south east of the Knapdale National Scenic Area (NSA). The West Loch Fyne (Coast) Area of Panoramic Quality (APQ) is 3.3km east. The closest residential receptors are located approximately 1.3km away.
- The proximity and character of designated assets within 2km of the Proposed Development has potential to result in indirect impacts resulting from changes to setting. The Scheduled Monument Auchoish long cairn lies in a forestry clearing approximately 600m east. Achnabreck prehistoric rock carvings Scheduled Monuments are approximately 1.9km to the south west. Ballimore Garden and Designated Landscape is over 8km to the south west. Through implementation of mitigation no significant effects are likely.
- The SEPA flood map indicates that the Proposed Development has small areas of high-medium surface water flood risk through implementation of mitigation no significant effects are likely. The Proposed Development is in close proximity to the north west tributary of the Dippin Burn, however it is beyond 30m and not at risk of river flooding.
- The nearest noise sensitive receptor is over 1.3km from the Proposed Development.
- With the implementation of mitigation that will be agreed with Argyll and Bute Council the Proposed Development is not considered likely to have a significant effect upon the environment and local receptors during construction and operation.



# Crossaig North Substation Design

## Components of the Proposed Development that will be subject to Town and Country Planning

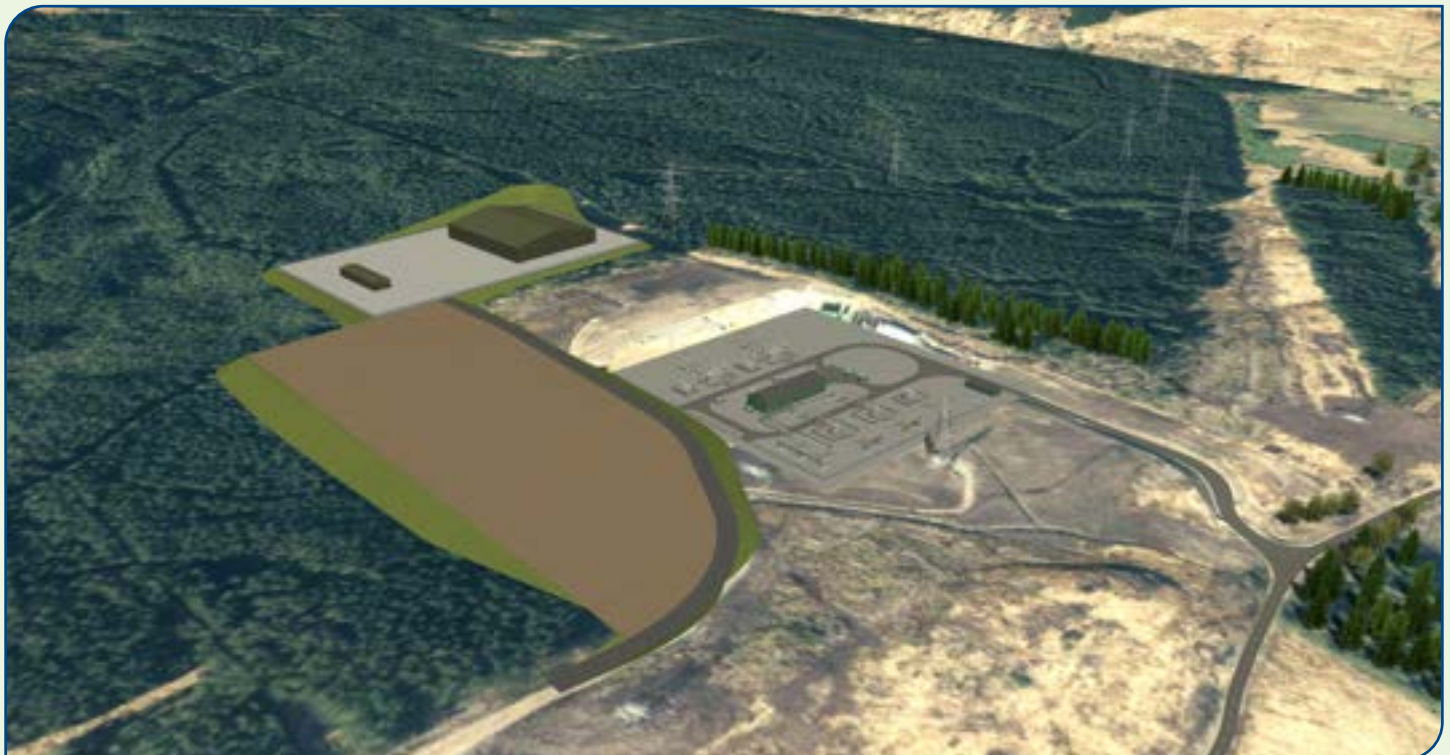
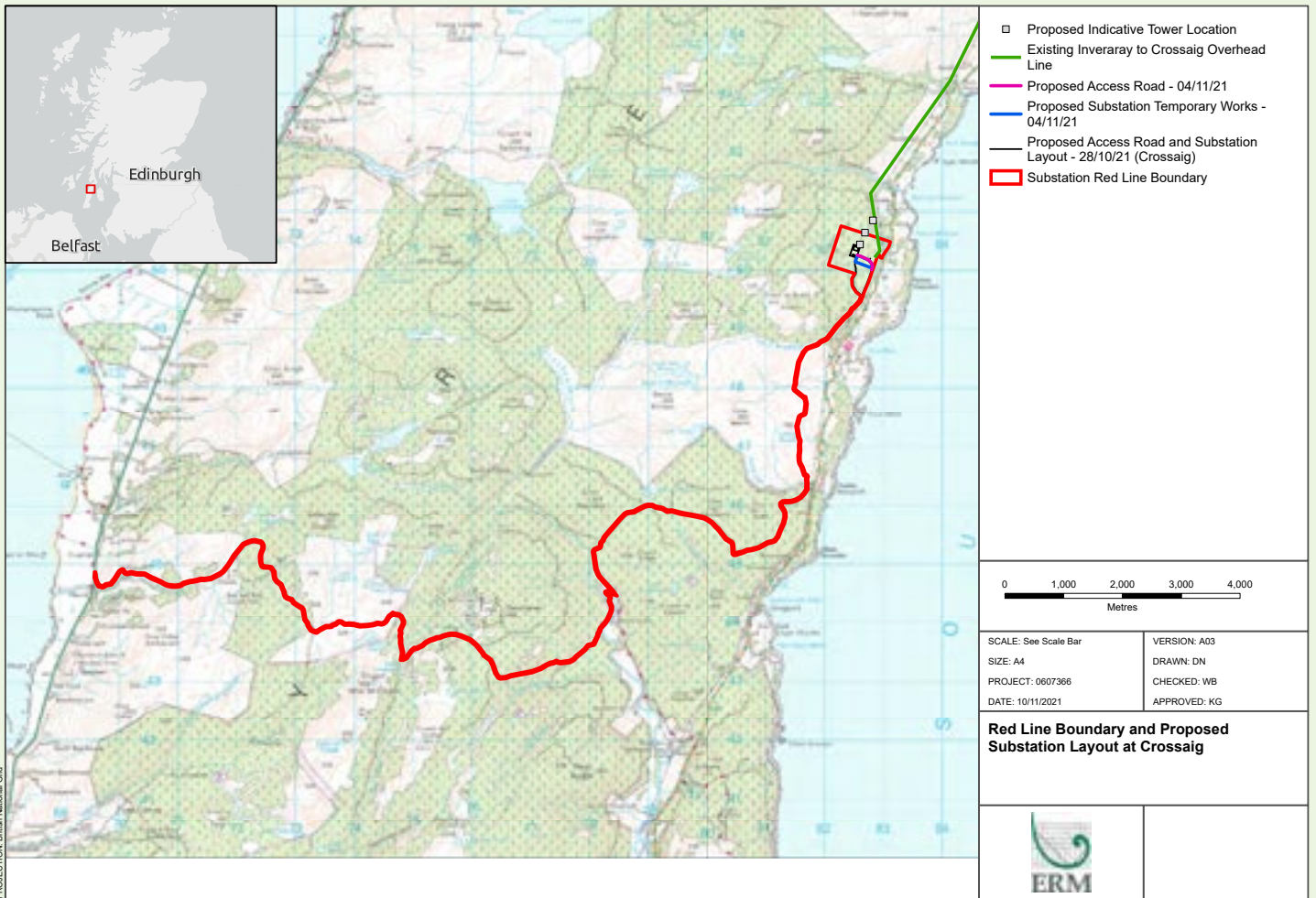
- A level platform of up to 1.93 ha (excluding cut/fill required to tie the platform into existing ground levels.);
- Gas-insulated switchgear (GIS) comprising of two control buildings, infrastructure, electrical equipment and Internal roads, access paths, and hardstanding areas within the substation compound:
  - One 275kV control building likely to be 31m by 65m with an approximate height of 15m;
  - One 132kV control building likely to be 11m by 20m with an approximate height of 15m; and
  - Two new 480MVA 275/132kV supergrid transformers located between the above mentioned buildings;
- The site would be surrounded by a 2.4m high security fence of palisade construction with CCTV surveillance;
- Upgrading approximately 25 km of existing access tracks and new access tracks (length to be confirmed);
- Formation of temporary site compounds and construction laydown areas;
- Associated landscaping works and felling approximately 14 ha of commercial forestry; and
- Drainage, including attenuation basins (SuDS ponds), the number to be confirmed.

## Components of the Associated Development subject to Section 37 of the Electricity Act 1989

- Approximately three towers will be required to make the connection into and out of the proposed substation;
- Potential for short term temporary overhead line diversions during construction;
- Temporary works areas (where possible, the main site compound will be shared with the substation above); and
- Dismantling of ten redundant towers.

## Key Environmental Considerations

- The Proposed Development does not sit within any internationally, nationally, or locally designated sites.
- A number of international designated sites lie within 10km of the Proposed Development, including Sound of Gigha SPA (9.5km west), Kintyre Goose Lochs SPA (7.8km west), Kintyre Goose Roosts SPA (5.2km west).
- A number of nationally designated sites lie within 10km of the Proposed east Development, including Arran Northern Mountains (7.2km), Claonaig Wood SSSI (5.7km north).
- A number of Local Nature Conservation Sites (LNCS) lie within 5km of the Proposed Development including Crossaig Glen LNCS (1.5km north), Cour LNCS (2km south), Loch an Eilein Group (4km north west).
- The majority of the Proposed Development is commercial coniferous plantation of low ecological conservation value. There is an area of mature conifer woodland, which has the potential to support red squirrel.
- The Proposed Development does not sit within a nationally or locally designated landscape. There would be views of the Proposed Development from the Arran National Scenic Area (NSA) and North Arran Wild Land Area (WLA), which lie 4.5km south east. The closest residential receptors are over 1km to the north east.
- The proximity and character of designated assets within 2km of the Proposed Development does not indicate potential for indirect impacts resulting from changes to setting. There is a Category A Listed Building, Cour House, within 1.8km of the Proposed Development. The closest Scheduled Monument is Talatoll, over 5km north east.
- The SEPA flood map indicates that the Proposed Development contains small pockets of high-medium likelihood surface water flooding. A watercourse is located at the south west corner of the Proposed Development.
- The nearest noise sensitive receptor is over 1km from the Proposed Development.
- With the implementation of mitigation that will be agreed with Argyll and Bute Council the Proposed Development is not considered likely to have a significant effect upon the environment and local receptors during construction and operation.



# Next Steps

## Environmental

Environmental surveys are currently being undertaken within the proposed planning application boundaries which will enable us to undertake an Environmental Assessment to identify potential impacts and to develop robust mitigation strategies to ensure that there are no significant residual impacts on the environment and local receptors during construction and operation.

## Design

Following the collation of feedback and outline results from the surveys the design will be finalised for taking forward to the submission of the planning application.

# Sheirdrim Wind Farm Connection Consultation

## What is the project?

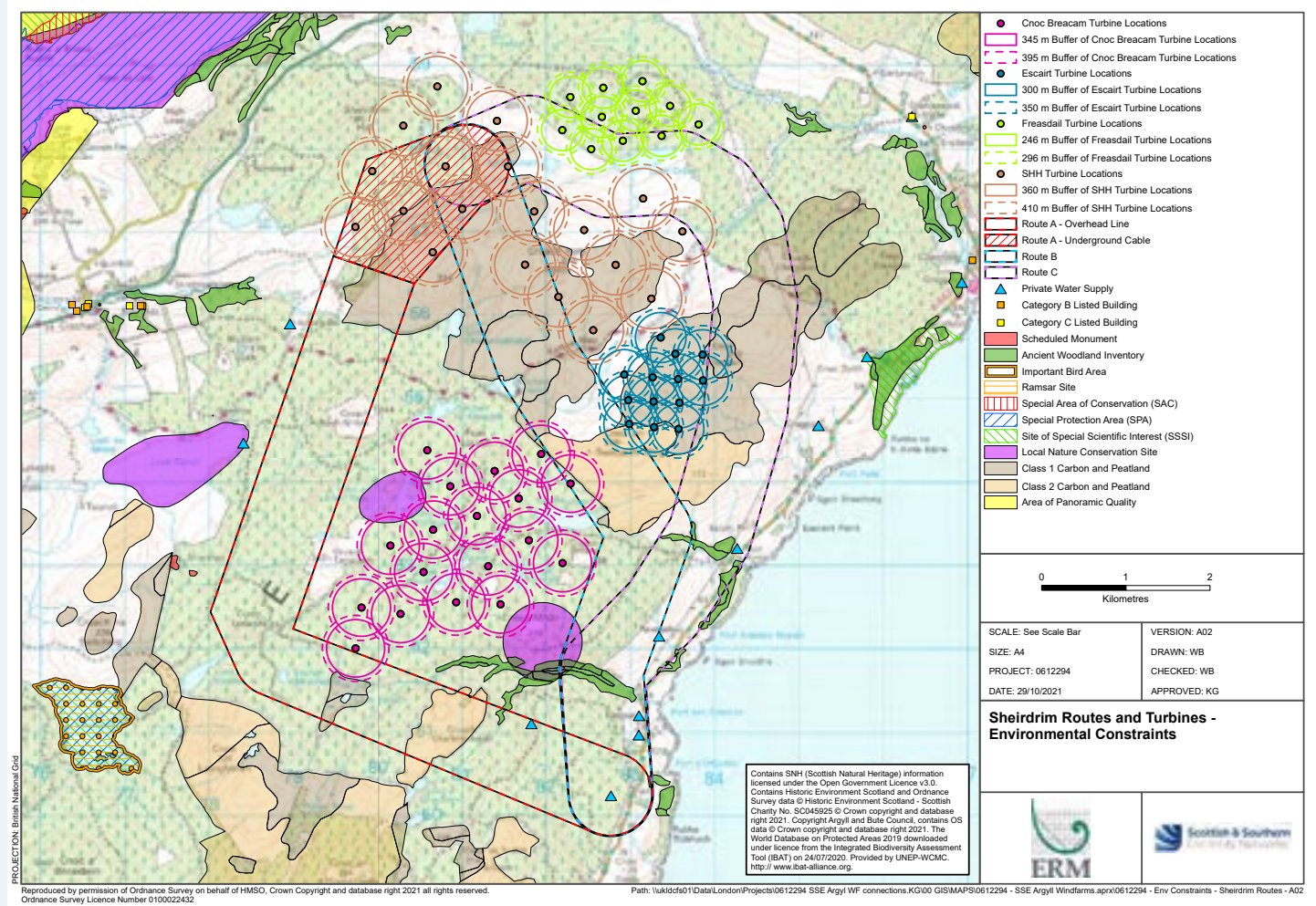
Scottish Power (UK) Ltd is the developer for the proposed Sheirdrim Windfarm located west of Claonaig, in Argyll. The 84MW windfarm requires a single circuit 132kV overhead line (OHL) connection from the windfarm substation compound and terminating at the existing Crossaig 132kV substation, with an approximate length of 11 km.

SSEN seeks to connect Sheirdrim Windfarm to the wider electricity network. It also aims to obtain planning permission for the Sheirdrim Windfarm Substation Compound. The substation platform would be the responsibility of Scottish Power (UK) Ltd as the Windfarm developer. The proposed project would involve:

- A possible underground cable (UGC) from the Sheirdrim Windfarm Substation Compound, extending approximately 2 km to 3 km before converting to OHL. This would require excavation of a trench in which to lay the cable and the construction of joint bays.
- Between 8 km and 11 km of trident wood poles or steel lattice structures to carry a single circuit 132kV OHL. Wood poles would require excavation and backfilling. Where shallow bedrock is present, it may be necessary to break or remove rock to accommodate pole foundations. Steel lattice towers would require excavation of a suitable area for the tower pad and installation of foundation.
- Install a 120MVA 132/33kV transformer; a GIS 33kV transformer Circuit Breaker; and a 33kV Switch Disconnector on suitable level platforms inside a combined control and transformer building; along with their associated cabling/metering/protection equipment.
- Felling commercial forestry to create an operational corridor to enable the safe operation and maintenance of the OHL.
- Associated works will include creation of temporary laydown areas for materials and welfare facilities, installation of permanent and temporary access tracks and drainage infrastructure.
- Remedial works to reinstate the immediate vicinity of the works and any ground disturbed, to pre-existing use.

## What are the Route Options?

We have identified three potential Routes for the new overhead line. The Route selection process identifies a wide corridor in which a preferred Alignment for the overhead line can be determined. This aims to progress towards a preferred overhead line Alignment in a systematic manner, which is technically feasible, economically viable, and could be anticipated to cause the least disturbance to the environment and to those who live, work and visit the area or use it for recreation. The options are:



### 1. Route A

Route A comprises UGC and OHL and heads south from the proposed windfarm, then turning east at Loch Ghatha, to Crossaig substation. The approximate route length is 11km.

### 2. Route B

Comprises OHL and UGC, travelling south from the proposed wind farm, with the most direct route to Crossaig substation. The southern section of the route runs alongside north of the B842. The approximate route length is 8km.

### 3. Route C

Comprises OHL and UGC and heads east from the wind farm, then south after passing Loch Cruinn. Route C joins with Route B at Crossaig Glen, and both follow south to Crossaig substation, alongside the B842. The approximate route length is 11km.

## What are the potential risks associated with these options?

We have completed a desk-based assessment of the routes and identified that all three options present the following environmental risks:

- commercial forestry would need to be felled.
- direct impact on areas of blanket bog and peat.
- cultural heritage assets may be impacted by route development.
- intersects with the Kintyre Way, with potential for close range visual effects.
- potential for barrier and collision impacts to Schedule 1 birds including qualifying interests of Kintyre Goose Roosts SPA and Sound of Gigha SPA.
- potential impacts to Ancient Woodland and Semi Natural Ancient Woodland habitats and to European and Nationally protected species. Route A contains a very small area of Ancient Woodland, which could be avoided during the Alignment process.

### Sheirdrim Windfarm Connection Environment RAG rating of all three route options

RAG Impact Rating - Environmental	Route Option		
	A	B	C
<b>Natural Heritage</b>			
Designations	Orange	Red	Red
Protected Species	Green	Green	Green
Habitats	Orange	Red	Red
Hydrology/geology	Green	Green	Green
Ornithology	Orange	Orange	Orange
<b>Cultural Heritage</b>	A	B	C
Designated	Orange	Green	Green
Non designated	Green	Green	Green
<b>People</b>	A	B	C
Proximity to dwellings	Green	Green	Green
<b>Landscape</b>	A	B	C
Access	Orange	Orange	Orange
Character	Orange	Orange	Orange
Visual	Orange	Orange	Orange
<b>Land Use</b>	A	B	C
Agriculture	Green	Green	Green
Forestry	Orange	Orange	Orange
Recreation	Orange	Orange	Orange
<b>Planning</b>	A	B	C
Planning	Orange	Orange	Orange

The Engineering assessment has identified that all routes will present some challenges mainly due to the presence of peat, with Route B having the greatest potential to affect peatland. Route B is the shortest route as it takes a direct path through two windfarms, and this may cause technical challenges to maintain clearance from the wind turbines, potentially increasing overall construction cost.

There are constraints affecting Route C due to proximity to the 275kV Inveraray to Crossaig OHL, windfarms and potential flood risk. Route A is marginally the longest route. It presents the least technical challenges when compared to Routes B and C.

To illustrate the level of risk associated to each consideration, please see the below Red Amber Green (RAG) table.

*A high risk is shown as red, a medium risk is shown as amber, and a low risk is shown as green.*

### Sheirdrim Windfarm Connection Engineering RAG rating of all three route options

Category	Route Option		
	A	B	C
<b>Infrastructure Crossing</b>			
Major Crossings	Green	Green	Green
Minor Roads	Red	Green	Orange
<b>Environmental Design</b>	A	B	C
Elevation	Green	Orange	Green
Contaminated Land	Orange	Orange	Orange
Flooding	Orange	Green	Red
<b>Ground Condition</b>	A	B	C
Terrain	Green	Green	Green
Peatland	Red	Red	Red
<b>Construction and Maintenance</b>	A	B	C
Access	Green	Red	Green
<b>Proximity</b>	A	B	C
Clearance Distance	Green	Green	Green
Windfarms	Orange	Red	Red
Communication Masts	Green	Green	Green
<b>Additional Considerations</b>	A	B	C
Route Length	Red	Green	Red



# What else is happening in Argyll?

SSEN consulted on the three projects which make up the Argyll 275kV Strategy (1. Creag Dhubh to Dalmally 275kV Connection, 2. Creag Dhubh to Inveraray 275kV Overhead Line and 3. Argyll and Kintyre 275kV Substations) in July 2021. The Report on Consultation for each of these projects can be found on the project specific website:

[\(www.ssen-transmission.co.uk/projects/creag-dhubh-dalmally-275kv-connection/\)](http://www.ssen-transmission.co.uk/projects/creag-dhubh-dalmally-275kv-connection/)

[\(www.ssen-transmission.co.uk/projects/creag-dhubh-inveraray-275kv-overhead-line/\)](http://www.ssen-transmission.co.uk/projects/creag-dhubh-inveraray-275kv-overhead-line/)

[\(www.ssen-transmission.co.uk/projects/argyll-and-kintyre-275kv-substations/\)](http://www.ssen-transmission.co.uk/projects/argyll-and-kintyre-275kv-substations/)

We are engaging with the Community in Dalmally regarding the alignment which will be taken forward in our Section 37 Application for the Creag Dhubh to Dalmally 275kV Connection. We expect to make this application in early 2022.

The Creag Dhubh to Inveraray Overhead Line Project is now in the Alignment stage with consultation on the Preferred Alignment provisionally planned for January 2022.

Alongside the Argyll 275kV Strategy, SSEN Transmission are currently developing and constructing additional reinforcement, generation connection and VISTA projects across Argyll. We've provided a list of our SSEN Transmission projects in the region below, alongside a short description and links to where you can access further information.

## Sloy Power Station Substation Rebuild

Transmission assets at Sloy Power Station Substation are reaching the end of their working life and need to be replaced. This project includes a new substation near the existing one at the power station, tower and gantry works for connection to the existing overhead line, 11kV cables to be installed to connect back to the power station from the new substation location and removal of existing equipment at the existing substation. The project team are currently identifying potential locations and further information is expected to be shared later this year.

## Inveraray – Crossaig Reinforcement

This project involves the rebuild of the existing overhead line between Inveraray and Crossaig and has been in construction since late 2019. Construction on Phase 1 of the project (Inveraray – Port Ann) is drawing to completion whilst enabling works for Phase 2 commenced in May 2021. Find out more:

[ssen-transmission.co.uk/projects/inveraray-crossaig](http://ssen-transmission.co.uk/projects/inveraray-crossaig)

## Carradale Substation

The aim of this project is to reinforce Carradale Substation in order to enable renewable generation connection requests. This involves the replacement of four existing transformers with higher capacity units to enable this upgraded connection. Work is ongoing and due to be completed by the end of 2022. Find out more:

[ssen-transmission.co.uk/projects/carradale-substation](http://ssen-transmission.co.uk/projects/carradale-substation)

## Dunoon Overhead Line Rebuild

The aim of this project is to replace the existing overhead transmission network line which connects Dunoon to the wider national grid. The existing overhead line is supported by an old design suite of metal lattice towers (often referred to as pylons) which are coming toward the end of their operational life. The project is currently in development and following consultation on the preferred route alignment in August 2021, SSEN plan to submit a Section 37 application for this project in 2022.

Find out more: [ssen-transmission.co.uk/projects/dunoon/](http://ssen-transmission.co.uk/projects/dunoon/)

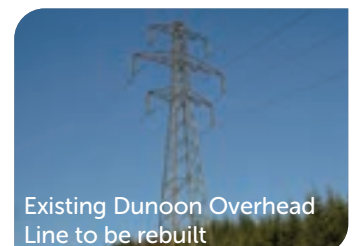
## Glen Falloch and Sloy VISTA

As part of the SSEN Transmission's VISTA (Visual Impact of Scottish Transmission Assets) initiative, we are installing a 132kV twin cable section of the existing 132kV double overhead line circuit at Sloy and Glen Falloch. Construction commenced earlier this year and 26 steel towers are scheduled to be removed by the end of 2021. Find out more:

[ssen-transmission.co.uk/projects/vista-glen-falloch-sloy](http://ssen-transmission.co.uk/projects/vista-glen-falloch-sloy)



Carradale Substation



Existing Dunoon Overhead Line to be rebuilt

## Windfarm Connection Projects

As mentioned, the Argyll and Kintyre 275kV Strategy is required to facilitate renewable generation in Argyll. We also have a requirement to connect this renewable generation to our upgraded infrastructure.

Windfarm Connection Projects with consultation planned for Spring 2022:

**Blarghour Wind Farm Connection:** This project aims to connect the proposed Blarghour Wind Farm to the new Creag Dhubh Substation via approximately 10km of overhead line by Autumn/Winter 2025. Consultation on the preferred route for the OHL is targeted for Spring 2022.

**Earraghail Wind Farm:** The project aims to connect the Earraghail Wind Farm development via c3km of 275kV Double Circuit Overhead Line onto the existing Craig Murrail – Crossaig Overhead Line for October 2025. Consultation on the preferred route for the Overhead Line will be undertaken in Spring 2022.

**Tangy 4 Wind Farm:** The project aims to connect the Tangy 4 Wind Farm development via c22km of 132kV Single Circuit Overhead Line onto the existing Crossaig – Carradale Overhead Line for October 2026. Consultation on the preferred corridor for the Overhead Line will be undertaken in Spring 2022.

**High Constellation Wind Farm Connection:** This project aims to connect High Constellation Wind Farm to the existing Crossaig Substation via approximately 400m of underground cable by Spring 2025.



# How do I have my say?

We understand and recognise the value of the feedback provided by members of the public during all engagements, consultations and events. Without this valuable feedback, the Project Development team would be unable to progress projects and reach a balanced proposal to submit for planning.

## Join our face to face and virtual consultation

Our consultation events have been organised to ensure our project teams will be available to answer questions on following dates and times:

- **Tuesday 30th November 2021: 1pm - 7pm - Loch Fyne Hotel for An Suidhe Substation**
- **Wednesday 1st December 2021: 1pm - 7pm - Carradale Village Hall for Crossaig North Substation and Sheirdrim Windfarm**
- **Thursday 2nd December 2021: 1pm - 7pm - Cairnbaan Hotel Lochgilphead Crarae and Craig Murrail Substation**

Our live chat sessions will be held at the following times:

- **Wednesday 8th December 2021: 10pm - 12 Noon**
- **Thursday 9th December 2021: 5pm - 7pm**

During these sessions you will be able to send us your questions using a text chat function and they will be answered by the project team.

The feedback forms in this booklet can be detached and sent back, or you can fill them in online using the form on the project webpage. We do request that any feedback that you wish to be included in the Pre-Application Consultation (PAC) Report is received in written format (feedback received via phone calls will be circulated to the project team but would not be included in the PAC Report).

All feedback received will be collated, reviewed and included in the PAC Report which will accompany the Planning Applications submission to Argyll and Bute Council in Spring 2022. The PAC Report will also be available to view on the project webpage.



If you are unable to join the live chat sessions, there are still plenty of ways to engage with our team:

You can contact us by **email**, **phone** or **post**, please see details for the Community Liaison Manager.

We are happy to arrange **(virtual) meetings** for individuals or small groups to discuss any areas of interest and if this is something you would like us to facilitate please contact us as soon as possible

We are happy to **post out copies of this brochure**, please contact the Community Liaison Manager to arrange this.

## Keep in touch

If you have any questions or require further information regarding SSEN Transmission's Argyll and Kintyre 275kV Substations, please do not hesitate to contact the project Community Liaison Manager:

**Caitlin Quinn**

**Caitlin.Quinn@sse.com**

**07901 135 758**

Caitlin Quinn, Scottish and Southern  
Electricity Networks, Inveralmond House,  
200 Dunkeld Road, Perth, PH1 3AQ

## Feedback

As part of the consultation exercise, we are seeking comments from members of the public, statutory consultees and other key stakeholders.

We kindly request that all comments are received by **Monday 10th January 2022**. Further information, should you require it, is available on the project webpage or can be made available in printed format by contacting the Community Liaison Manager.

## Your Feedback - An Suidhe Substation PAN

If you prefer, the same form is available to complete online and can be found on the project webpage: [www.ssen-transmission.co.uk/projects/argyll-and-kintyre-275kv-substations/](http://www.ssen-transmission.co.uk/projects/argyll-and-kintyre-275kv-substations/)  
Please complete in **BLOCK CAPITALS**. (Please tick one box per question only).

**Q1** Do you feel sufficient information has been provided to enable you to understand what is being proposed on site and why?

Yes

No

If no, please tell us how we could provide further explanation

**Q2** Are you satisfied that the proposed layout and design is appropriate for the site location?

Yes

No

If no, please tell us how we could provide further explanation

**Q3** Do you have any particular concerns or queries on the Proposed Development?

**Q4** Is there anything specific you would like to raise in relation to the project which will impact on the planning process to deliver this essential network upgrade at An Suidhe substation?



Do you have any other comments / support on the Proposed Development?

Full name

Address

Telephone

Email

If you would like to be kept informed of progress on the project please tick this box.

If you would like your comments to remain anonymous please tick this box.

Thank you for taking the time to complete this feedback form.

Please submit your completed form by one of the methods below:

**Post:** Scottish Hydro Electric Transmission, Inveralmond House, 200 Dunkeld Road, Perth, PH1 3AQ

**Email:** Caitlin.Quinn@sse.com



## Your Feedback - Crarae Substation PAN

If you prefer, the same form is available to complete online and can be found on the project webpage: [www.ssen-transmission.co.uk/projects/argyll-and-kintyre-275kv-substations/](http://www.ssen-transmission.co.uk/projects/argyll-and-kintyre-275kv-substations/)  
Please complete in **BLOCK CAPITALS**. (Please tick one box per question only).

**Q1** Do you feel sufficient information has been provided to enable you to understand what is being proposed on site and why?

Yes

No

If no, please tell us how we could provide further explanation

**Q2** Are you satisfied that the proposed layout and design is appropriate for the site location?

Yes

No

If no, please tell us how we could provide further explanation

**Q3** Do you have any particular concerns or queries on the Proposed Development?

**Q4** Is there anything specific you would like to raise in relation to the project which will impact on the planning process to deliver this essential network upgrade at Crarae substation?



Do you have any other comments / support on the Proposed Development?

Full name

Address

Telephone

Email

If you would like to be kept informed of progress on the project please tick this box.

If you would like your comments to remain anonymous please tick this box.

Thank you for taking the time to complete this feedback form.

Please submit your completed form by one of the methods below:

**Post:** Scottish Hydro Electric Transmission, Inveralmond House, 200 Dunkeld Road, Perth, PH1 3AQ

**Email:** Caitlin.Quinn@sse.com



## Your Feedback - Craig Murrail Substation PAN

If you prefer, the same form is available to complete online and can be found on the project webpage: [www.ssen-transmission.co.uk/projects/argyll-and-kintyre-275kv-substations/](http://www.ssen-transmission.co.uk/projects/argyll-and-kintyre-275kv-substations/)  
Please complete in **BLOCK CAPITALS**. (Please tick one box per question only).

**Q1** Do you feel sufficient information has been provided to enable you to understand what is being proposed on site and why?

Yes  No  If no, please tell us how we could provide further explanation

**Q2** Are you satisfied that the proposed layout and design is appropriate for the site location?

Yes  No  If no, please tell us how we could provide further explanation

**Q3** Do you have any particular concerns or queries on the Proposed Development?

**Q4** Is there anything specific you would like to raise in relation to the project which will impact on the planning process to deliver this essential network upgrade at Craig Murrail substation?





Do you have any other comments / support on the Proposed Development?

Full name

Address

Telephone

Email

If you would like to be kept informed of progress on the project please tick this box.

If you would like your comments to remain anonymous please tick this box.

Thank you for taking the time to complete this feedback form.

Please submit your completed form by one of the methods below:

**Post:** Scottish Hydro Electric Transmission, Inveralmond House, 200 Dunkeld Road, Perth, PH1 3AQ

**Email:** Caitlin.Quinn@sse.com



## Your Feedback - Crossaig North Substation PAN

If you prefer, the same form is available to complete online and can be found on the project webpage: [www.ssen-transmission.co.uk/projects/argyll-and-kintyre-275kv-substations/](http://www.ssen-transmission.co.uk/projects/argyll-and-kintyre-275kv-substations/)  
Please complete in **BLOCK CAPITALS**. (Please tick one box per question only).

**Q1** Do you feel sufficient information has been provided to enable you to understand what is being proposed on site and why?

Yes

No

If no, please tell us how we could provide further explanation

**Q2** Are you satisfied that the proposed layout and design is appropriate for the site location?

Yes

No

If no, please tell us how we could provide further explanation

**Q3** Do you have any particular concerns or queries on the Proposed Development?

**Q4** Is there anything specific you would like to raise in relation to the project which will impact on the planning process to deliver this essential network upgrade at Crossaig North substation?



Do you have any other comments on the Proposed Development?

Full name

Address

Telephone

Email

If you would like to be kept informed of progress on the project please tick this box.

If you would like your comments to remain anonymous please tick this box.

Thank you for taking the time to complete this feedback form.

Please submit your completed form by one of the methods below:

**Post:** Scottish Hydro Electric Transmission, Inveralmond House, 200 Dunkeld Road, Perth, PH1 3AQ

**Email:** Caitlin.Quinn@sse.com



## Your Feedback - Sheirdrim Windfarm Connection - Route Options Feedback Questions

**Q1** Do you feel sufficient information has been provided to enable you to understand what is being proposed and why?

Yes

No

If no, please tell us how we could provide further explanation

**Q2** Which of the three Options would you consider the best option for SSEN Transmission to develop? Please provide an explanation of your answer.

**Q3** Which of the three Options would you consider the least preferable option for SSEN Transmission to develop? Please provide an explanation of your answer.

**Q4** Are there any potential risks or benefits associated with Sheirdrim Windfarm Connection, that you believe have not been included in the Consultation Document?



**Do you have any other comments / support on the Proposed Development?**

**Full name**

**Address**

**Telephone**

**Email**

**If you would like to be kept informed of progress on the project please tick this box.**

**If you would like your comments to remain anonymous please tick this box.**

**Thank you for taking the time to complete this feedback form.**

**Please submit your completed form by one of the methods below:**

**Post:** Scottish Hydro Electric Transmission, Inveralmond House, 200 Dunkeld Road, Perth, PH1 3AQ

**Email:** Caitlin.Quinn@sse.com

The feedback forms and all information provided in this booklet can also be downloaded from the dedicated websites:

<https://www.ssen-transmission.co.uk/projects/argyll-and-kintyre-275kv-substations>

<https://www.ssen-transmission.co.uk/projects/sheirdrim-wind-farm-connection>

Any information given on the feedback form can be used and published anonymously as part of Scottish and Southern Electricity Networks consultation report. By completing this feedback form you consent to Scottish and Southern Electricity Networks using feedback for this purpose.

Scottish and Southern Electricity Networks is a trading name of: Scottish and Southern Energy Power Distribution Limited Registered in Scotland No. SC213459; Scottish Hydro Electric Transmission plc Registered in Scotland No. SC213461; Scottish Hydro Electric Power Distribution plc Registered in Scotland No. SC213460; (all having their Registered Offices at Inveralmond House 200 Dunkeld Road Perth PH1 3AQ); and Southern Electric Power Distribution plc Registered in England & Wales No. 04094290 having its Registered Office at Number One Forbury Place, 43 Forbury Road, Reading Berkshire, RG1 3JH which are members of the SSE Group



## **APPENDIX 5: CRARAE SUBSTATION VIRTUAL CONSULTATION BOARD**

# Crarae Substation

## Components of the Proposed Development that will be subject to Town and Country Planning

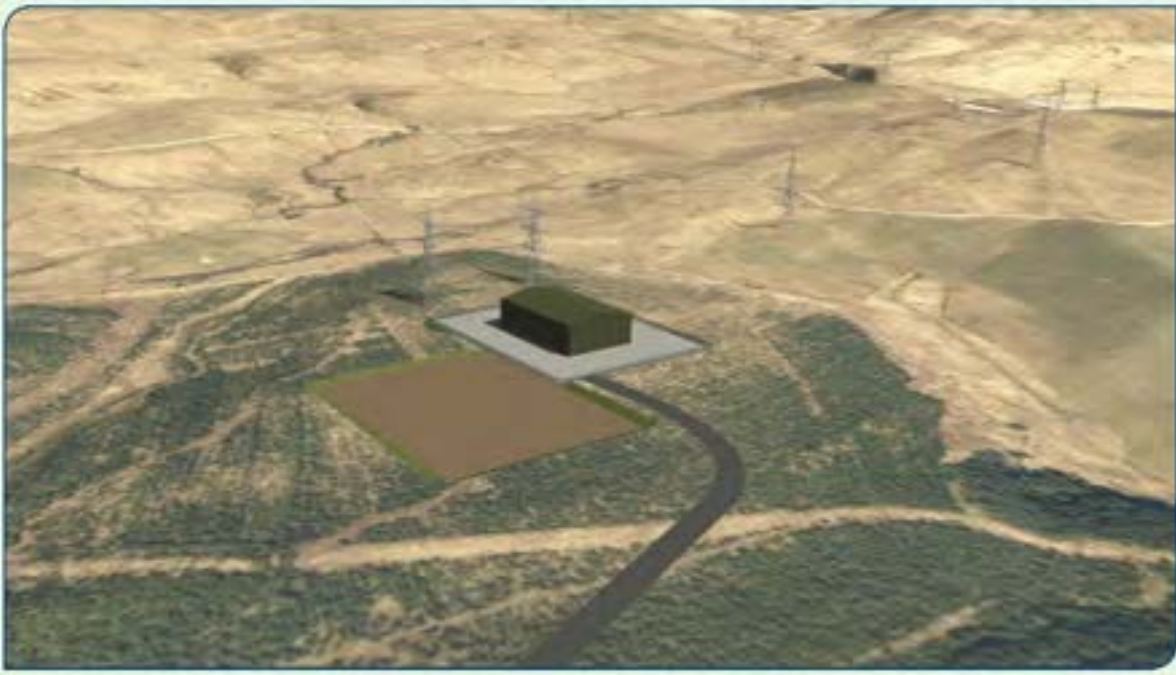
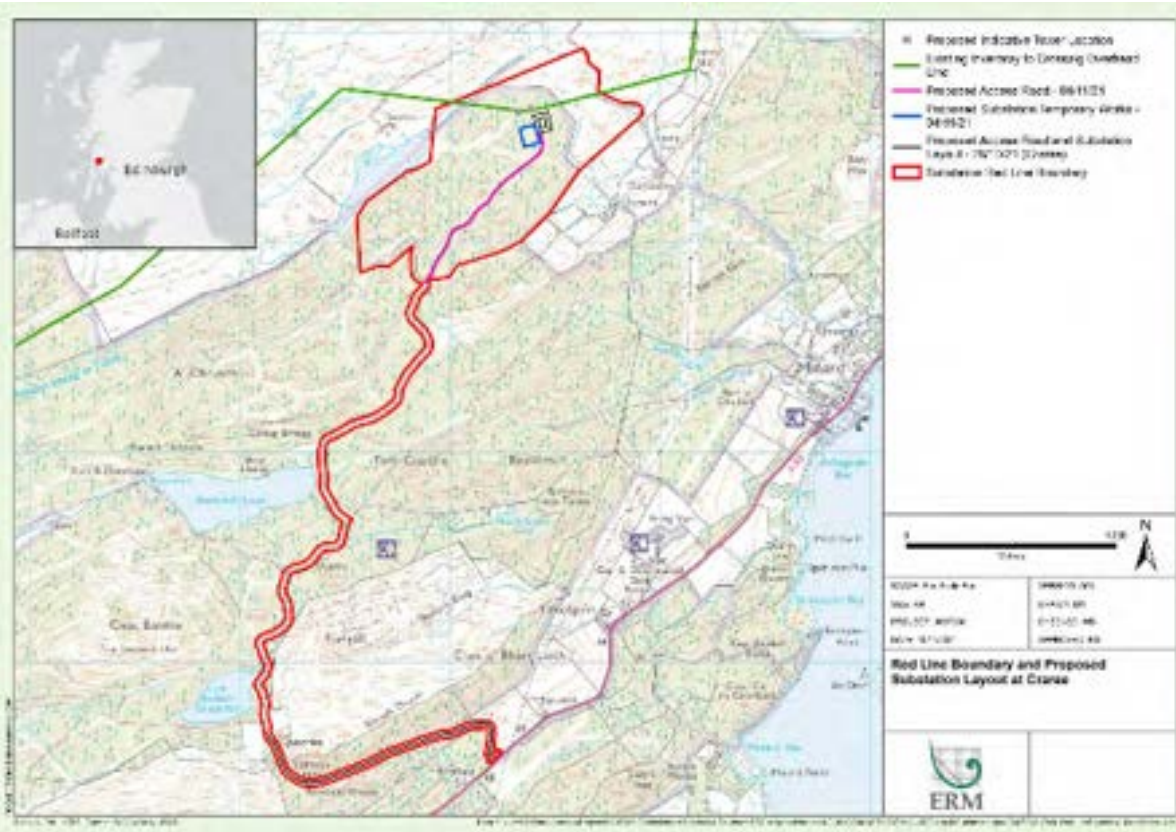
- A level platform of up to 0.6 ha (excluding cut/fill required to tie the platform into existing ground levels);
- Gas-insulated switchgear (GIS) comprising of a control building (likely to be 31m by 45m with an approximate height of 15m), infrastructure, electrical equipment and internal roads, access paths, and hardstanding areas within the substation compound;
- The site would be surrounded by a 2.4m high security fence of palisade construction with CCTV surveillance;
- Upgrading approximately 4.5km of existing access tracks and new access tracks (length to be confirmed);
- Formation of a temporary works area and construction laydown areas;
- Associated landscaping works and felling approximately 3 ha of commercial forestry; and
- Drainage, including attenuation basins (SuDS ponds), the number to be confirmed.

## Components of the Associated Development subject to Section 37 of the Electricity Act 1989

- Approximately three towers will be required to make the connection into and out of the proposed substation;
- Potential for short term temporary overhead line diversions during construction;
- Temporary works areas (where possible, the main site compound will be shared with the substation above); and
- Dismantling of three redundant towers

## Key Environmental Considerations

- The Proposed Development is within commercial coniferous plantation of low ecological and conservation value though there is potential for red squirrel dreys.
- There is an area of marshy grassland within the site which has potential for Ground Water Dependent Terrestrial Ecosystems (GWDEs) and further assessment will be undertaken to confirm this.
- Knapdale Loch SPA is over 17km to the west. There are no sites within 5km designated for habitat.
- The Proposed Development does not sit within a nationally designated landscape. The Proposed Development is approximately 1.6km west of a locally designated landscape, West Loch Fyne (coast) Area of Panoramic Quality (APQ) and 4km west of East Loch Fyne (coast) APQ. The closest residential receptors are over 500m down slope.
- Crarae Garden and Designed Landscape is approximately 1.8km to the east. Crarae Lodge scheduled monument is approximately 2.4km to the south east. Brairport Bay scheduled monuments are approximately 2.5km to the south. Minard Castle Category B listed building is approximately 3km to the south. The presence of interlocking forestry and the separation distance suggests that there will be no significant effects on the setting of designated assets.
- The closest watercourse is Abhainn Rìtaeg An Tuinn, adjacent to the Proposed Development. The SERA flood map indicates that the Proposed Development contains very small pockets of high - medium likelihood surface water flooding.
- The nearest noise sensitive receptor is approximately 500m from the Proposed Development.
- With the implementation of mitigation that will be agreed with Argyll and Bute Council the Proposed Development is not considered likely to have a significant effect upon the environment and local receptors during construction and operation.





## **APPENDIX 6: CRARAE 275 KV UPDATED PROPOSAL OF APPLICATION NOTICE**

Form provided by



This form should be used by prospective applicants to serve notice to both the Planning Authority and other relevant persons/community groups/agencies that 'PAC' is to be undertaken in respect of a prospective planning application.

For Official Use Only
Date Received:
Ref:

Pre-Application Consultation ('PAC') - Proposal of Application Notice

Requisite Notice under Section 35B(2) & (5) of the Town and Country Planning (Scotland) Act 1997, as amended by the Planning etc. (Scotland) Act 2006

TAKE NOTICE:

1) That pre-application consultation is to be undertaken by: (insert name and contact details of prospective applicant - see note 1)

Name: Scottish Hydro Electric Transmission plc

Address: Inveralmond House, 200 Dunkeld Road, Perth PH1 3AQ

Telephone: 07918 472528 E-mail: sarah.cane-ritchie@sse.com

2) represented in this matter by: (if applicable, insert name and contact details of agent - see note 2)

Name: N/A

Address:

Telephone: E-mail

for a prospective planning application for: (insert general description of development - see note 3)

National Development - Erection of electricity substation comprising platform area, control building, associated plant and infrastructure, ancillary facilities, access track(s), laydown area(s) and landscape works.

3) at: (insert address of prospective development - see note 4)

Crarae 275 kV Substation, land to the south west of the existing Crarae Substation reference E196140 N697498 as identified on the accompanying scale location plan. (see note 5)

## SUBMISSION OF COMMENTS TO PRE-APPLICATION CONSULTATION:

- 4) If you wish to make comments about the prospective development these should be submitted to the prospective applicant at: (insert postal/e-mail address/telephone to which consultation comments should be submitted to the prospective applicant or their representative in this matter – see note 6):

Name **Caitlin Quinn,**

Address: Inveralmond House, 200 Dunkeld Road, Perth, PH1 3AQ

Telephone: M:07901 135758 E-mail **Caitlin.Quinn@sse.com,**

- 5) **no later than:** (insert closing date for receipt of comments to 'PAC' – see note 7)

**10<sup>th</sup> January 2022**

*Note: PAC is undertaken by prospective applicants in advance of the submission of a formal planning application to Argyll and Bute Council. Comments in respect of a PAC exercise must be submitted to the PROSPECTIVE APPLICANT and should not be submitted to the planning authority at this time. Any correspondence received by Argyll and Bute Council's Planning Services in respect of a PAC exercise will be returned to the sender. Comments submitted to a prospective applicant at this time are not representations to the Planning Authority; in the event that the prospective applicant submits an application for planning permission then there would be an opportunity to make representations on that application following its submission to the Planning Authority.*

---

## SUMMARY OF PRE-APPLICATION CONSULTATION TO BE UNDERTAKEN BY THE PROSPECTIVE APPLICANT:

- 6) **Having regard to the requirements of Section 35B(2) of the Act, this notice has been served upon Argyll and Bute Council, Planning and Regulatory Services, Major Applications Unit, Dalriada House, Lochgilphead, PA31 8ST on:** (enter date notice served upon planning authority – see note 8)  
**24<sup>th</sup> November 2021**  
**from which a minimum of 12 weeks must elapse prior to the submission of a formal application for planning permission.**
- 7) **Those notified in terms of Regulation 7(1) of the Town and Country Planning (Development Management Procedure) (Scotland) Regulations 2008 are:** (insert details of relevant Community Council consultation – see note 9 – continue on a separate sheet if necessary)

<b>Community Council</b>	<b>Address</b>	<b>Date Notified</b>
Inveraray - Linda Divers	lindadivers00@gmail.com	24/11/21
Furnace - Lynda Syed	lynda.syed@btopenworld.com	24/11/21

	Continued on a Separate Sheet	
--	-------------------------------	--

- 8) **In addition to the requirements of Regulation 7(1), the following community stakeholders and other community interests have also been served notice:** (insert details of other relevant individuals/property/community organisations/consultees to be notified during 'PAC' – continue on a separate sheet if necessary – see note 10)

Other Community Interests	Address	Date Notified
<b>MSP</b> - Jenni Minto	Jenni.Minto.msp@parliament.scot	24/11/21
<b>MP</b> - Brendan O'Hara	brendan.ohara.mp@parliament.uk	24/11/21
<b>Councillors (Mid Argyll)</b>		
Donald Macmillan	donald.macmillan@argyll-bute.gov.uk	24/11/21
Douglas Philand	dougie.philand@argyll-bute.gov.uk	24/11/21
Sandy Taylor	sandy.taylor@argyll-bute.gov.uk	24/11/21

- 9) **Having regard to the requirements of Regulation 7(2) of the Town and Country Planning (Development Management Procedure) (Scotland) Regulations 2008 a public event where members of the public may make comments to the prospective applicant/agent as regards the proposed development will be held at:**  
(insert details of public event location(s)/venue(s) – see note 11)

Public Event	Venue	Time(s) & Date(s)
Virtual Event	Virtual consultation room	8 <sup>th</sup> December 2021 10:00 - 12:00 9 <sup>th</sup> December 2021 - 17:00 - 19:00
Access to the room and any other Information can be accessed on the project webpage <a href="https://www.ssen-transmission.co.uk/projects/argyll-and-kintyre-275kv-substations">https://www.ssen-transmission.co.uk/projects/argyll-and-kintyre-275kv-substations</a>		

**10) the full details of which shall be published a minimum of 7 days in advance in:**  
(insert name of publication local to development site/location of public event(s) – see note 12)

<b>Publication</b>	<b>Date Published</b>
Oban Times	18 <sup>th</sup> & 19 <sup>th</sup> November 2021
Oban Times (Update on face to face event cancellations)	25 <sup>th</sup> & 26 <sup>th</sup> November 2021

**11) In addition to the above it is also proposed to undertake the following additional forms and types of consultations:** (insert details of who is to be consulted, form of consultation, date and time consultation will be undertaken – continue on another sheet if necessary - see note 13)

The events have been advertised in advance and a postcard drop containing full details of the event and access information, alongside details of how to obtain copies of the consultation brochure/project proposals has been delivered to all addresses within 5 km of the site.

In addition, SSEN Transmission will host an invitation only webinar for the local community councils, councillors, MSP and MP. This will be held on the 14<sup>th</sup> December 2021 from 10:00 until 12:00. During the webinar, the project team will be delivering an information session on the four substations, we will also operate a 3D model to share visualisations of the substations in relation to certain postcodes in the local area, this will be followed by a Q&A. This webinar is intended to allow for locally elected representatives to voice any further questions following our Live IM sessions with the community during our virtual consultation. This will be recorded and uploaded to our website thereafter.

Information will be made available on the project website and on SSE social media channels throughout the consultation period.

Direct contact with Community Councils will be made to offer attendance to meetings to provide more information if appropriate.

SSEN Transmission social media sites will be utilised and a press release will be issued in advance of events.

---

## 12) DECLARATION

**I hereby certify that I, the prospective applicant/agent, have given correct and complete information and given the requisite notice to all parties listed above in respect of the requirements of S35B of the Act.**

**SIGNATURE OF PROSPECTIVE APPLICANT/AGENT:** Redacted

**PRINT NAME:** Sarah Cane-Ritchie

**DATED:** 24/11/21

Continuation of PAN Form for Crarare 275 kV Substation

**7) Those notified in terms of Regulation 7(1) of the Town and Country Planning (Development Management Procedure) (Scotland) Regulations 2008 are:**

<b>Community Council</b>	<b>Address</b>	<b>Date Notified</b>
West Lochfyne - Fred Bruce	<a href="mailto:gairdeeloch@gmail.com">gairdeeloch@gmail.com</a>	24/11/21
Lochgilphead - Andy Buntin	<a href="mailto:andy.buntin1@btinternet.com">andy.buntin1@btinternet.com</a>	24/11/21
Dunadd - Jim Malcolm	<a href="mailto:jgmalcolm@btinternet.com">jgmalcolm@btinternet.com</a>	24/11/21
Strachur and District	<a href="mailto:cecis.farmlet@gmail.com">cecis.farmlet@gmail.com</a> <a href="mailto:kirstie.reid1@btinternet.com">kirstie.reid1@btinternet.com</a>	24/11/21

## **APPENDIX 7: UPDATED PRESS ADVERT POSTER AND MAILDROP**



**Scottish & Southern**  
Electricity Networks

TRANSMISSION

## \*\*\*IN-PERSON PUBLIC CONSULTATION EVENTS CANCELLED\*\*\*

Following the notice in last week's Oban Times advertising SSEN Transmission Planning Advice Notice (PAN) Public Consultation Events for An Suidhe, Crarae, Craig Murrail and Crossaig North Substations and the proposed Sheirdrim Windfarm project on the 30th, 1st and 2nd of December, we have made the difficult decision to cancel these events in person due to Covid-19 levels currently affecting Argyll and Bute.

We are disappointed that we have had to cancel, however, our top priority is the safety of the residents of Inveraray, Carradale and Lochgilphead and our colleagues. We hope you understand that unfortunately there is no safe way to go ahead with these events in person at this time.

**If you have any queries about joining the virtual consultation, or if you would like us to send you a paper copy of the consultation booklet, please contact the Community Liaison Manager:**

Caitlin Quinn  
07901135758  
caitlin.quinn@sse.com  
1 Waterloo St, Glasgow, G2 6AY

In order to provide an opportunity for you to share your views with us, we will be continuing as planned with our virtual consultation and providing an enhanced virtual offering. Live IM chats with the project team will be held on the following dates and times:

**Wednesday 8th December 2021:  
10-12 Noon**

**Thursday 9th December 2021: 5-7pm**

You will find further information about the virtual consultation, the project & the planning applications, access to the virtual consultation room and the feedback forms via the project webpage:

[www.ssen-transmission.co.uk/projects/argyll-and-kintyre-275kv-substations/](http://www.ssen-transmission.co.uk/projects/argyll-and-kintyre-275kv-substations/)



**@ssencommunity**