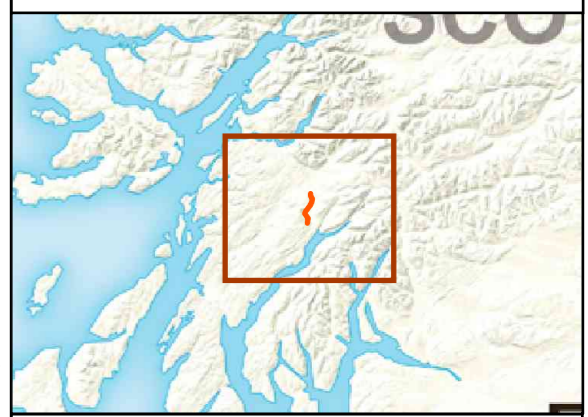


- ### Legend
- Proposed Alignment Towers
  - Proposed Alignment
  - Inveraray - Crossaig Towers
  - Inveraray - Crossaig OHL
  - Proposed Creag Dhubh Substation (Separate Application)
  - 15 km Cumulative Study Area
  - Viewpoint Location
  - An Suidhe Wind Farm - Operational
  - Clachan Flats Wind Farm - Operational
- #### Temporary Diversions
- ITE / ITW 132 kV Diversion Poles
  - 275 kV Diversion Towers
  - ITE / ITW 132 kV Diversion
  - 275 kV Diversion
- #### Access Tracks
- Creag Dhubh Access Track
  - Access Tracks - Track To Be Maintained
  - Proposed Access Route (Perm)
  - Proposed Access Route (Temp)
  - Existing Access Tracks Upgrade



Reproduced by permission of Ordnance Survey on behalf of HMSO.  
Crown copyright and database right 2022 all rights reserved.  
Ordnance Survey Licence number EL273236.

Project No: LT000194  
Project: 1620011091

Title: Creag Dhubh to Inveraray 275 kV Overhead Line  
Figure 6.6b: Cumulative ZTV: Towers, An Suidhe and Clachan Flats Windfarms

Drawn by: NJ Date: 20/09/2022

Drawing: R162\_11091\_Fig6\_6b\_CumulativeZTV\_B

1. The ZTV analysis does not take into account the screening effect of vegetation, buildings and other surface features
2. Predicted visibility based on a viewer eye height 2m above ground
3. Visibility calculated using Ordnance Survey Terrain 50 DTM on a 50m Grid
4. Effect of earth curvature and light refraction is included
5. ZTV produced in ArcGIS Pro 2.8