

- ### Legend
- Preferred Alignment Towers
 - Proposed Alignment
 - [- - -] 1 km Study Area
 - Theoretical Horizontal Angle of View Occupied by Proposed Towers
 - ★ Assessed Residential Properties
 - Temporary Diversions
 - ITE / ITW 132 kV Diversion Poles
 - ITE / ITW 132 kV Diversion
 - Access Tracks
 - Access Tracks - Track To Be Maintained
 - Proposed Access Route (Perm)
 - Proposed Access Route (Temp)
 - Existing Access Tracks Upgrade
 - Number of Towers Visible (60 m Tower Height)
 - 1 to 6
 - 7 to 12
 - 13 to 18
 - 19 to 25
 - 26 to 34



Reproduced by permission of Ordnance Survey on behalf of HMSO. Crown copyright and database right 2022 all rights reserved. Ordnance Survey Licence number EL273236.

Project No: LT000194

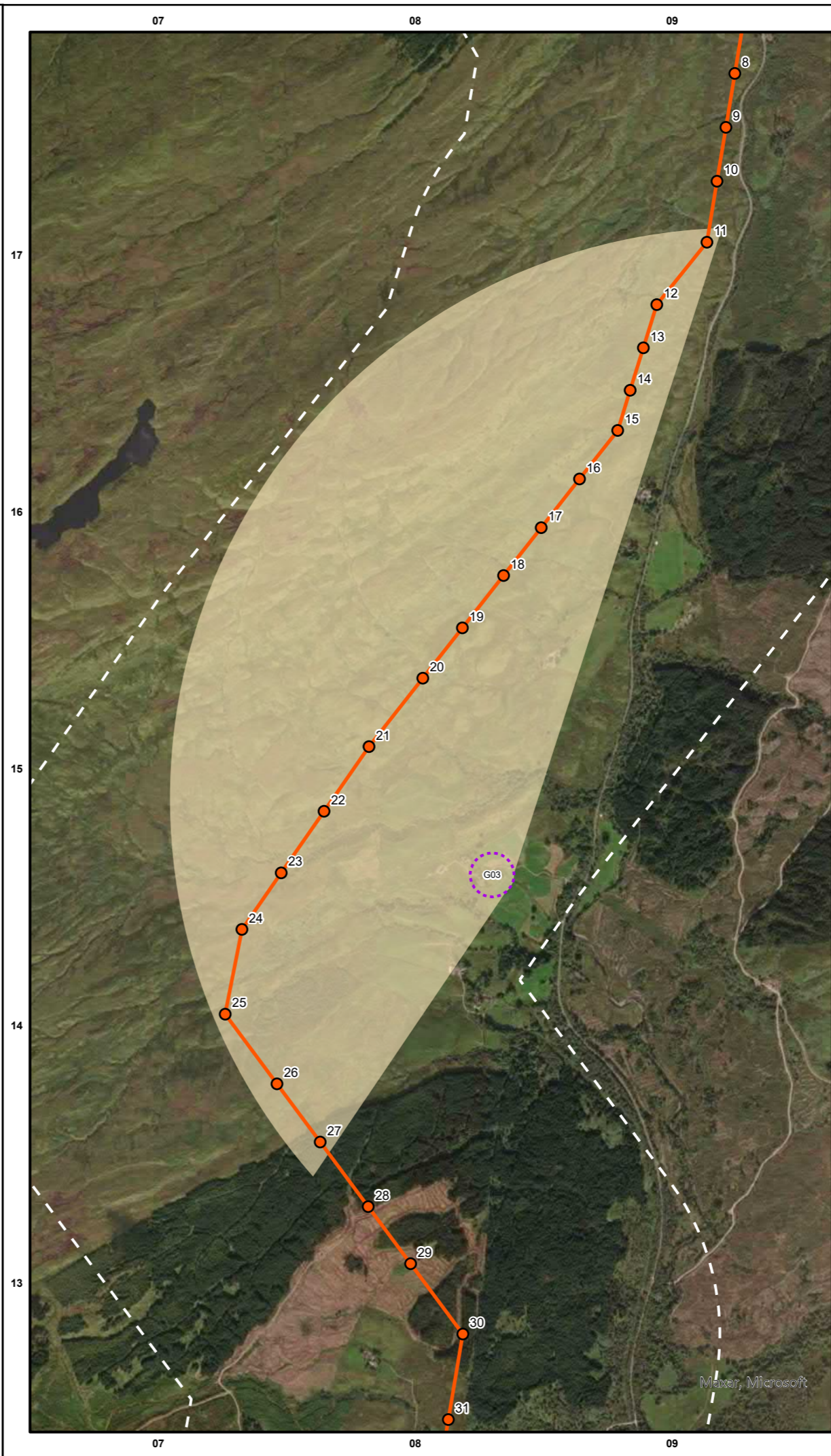
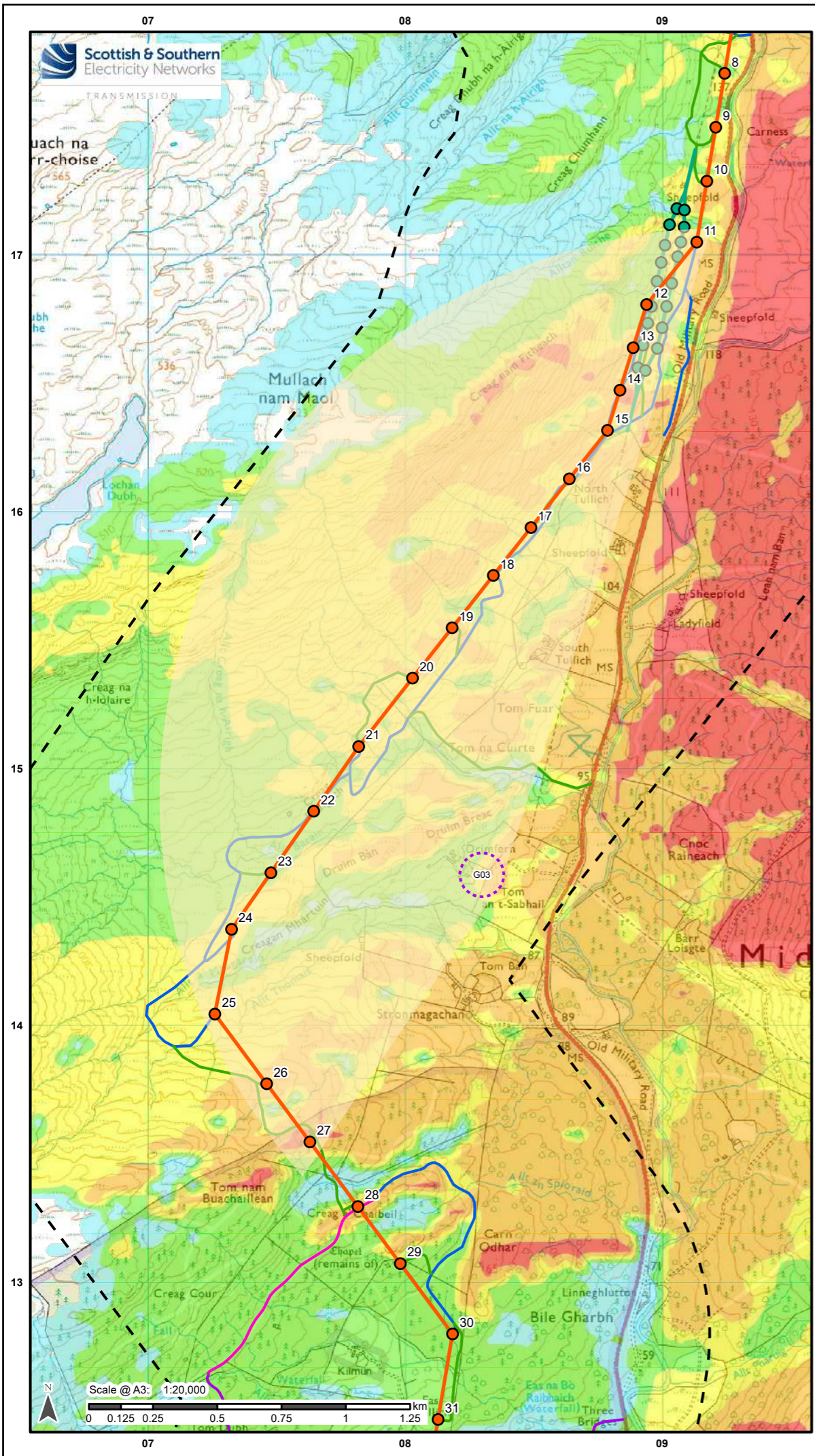
Project: 1620011091

Title: Creag Dhubh to Inveraray 275 kV Overhead Line

Figure 6.6.7f: Residential Visual Amenity - RVA05

Drawn by: NJ Date: 20/09/2022

Drawing: R162_11091_Fig6_6_7f_RVAA_A



Legend

- Proposed Alignment Towers
- Proposed Alignment
- - - 1 km Study Area
- Theoretical Horizontal Angle of View Occupied by Proposed Towers
- ⋯ Assessed Group of Properties
- Temporary Diversions
- ITE / ITW 132 kV Diversion Poles
- ITE / ITW 132 kV Diversion
- Access Tracks
- Access Tracks - Track To Be Maintained
- Proposed Access Route (Perm)
- Proposed Access Route (Temp)
- Existing Access Tracks Upgrade
- Number of Towers Visible (60 m Tower Height)
- 1 to 6
- 7 to 12
- 13 to 18
- 19 to 25
- 26 to 34



Reproduced by permission of Ordnance Survey on behalf of HMSO. Crown copyright and database right 2022 all rights reserved. Ordnance Survey Licence number EL273236.

Project No: LT000194

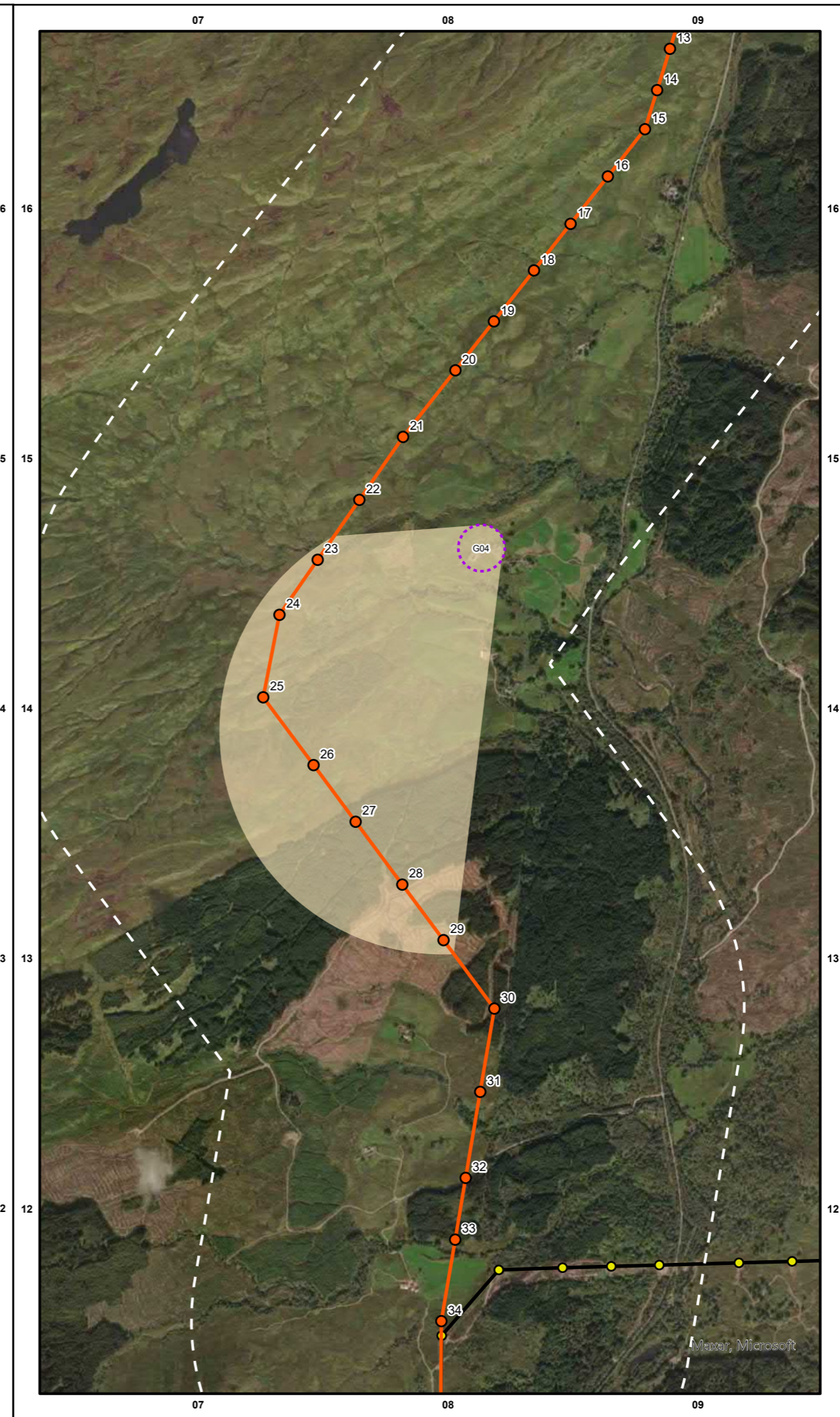
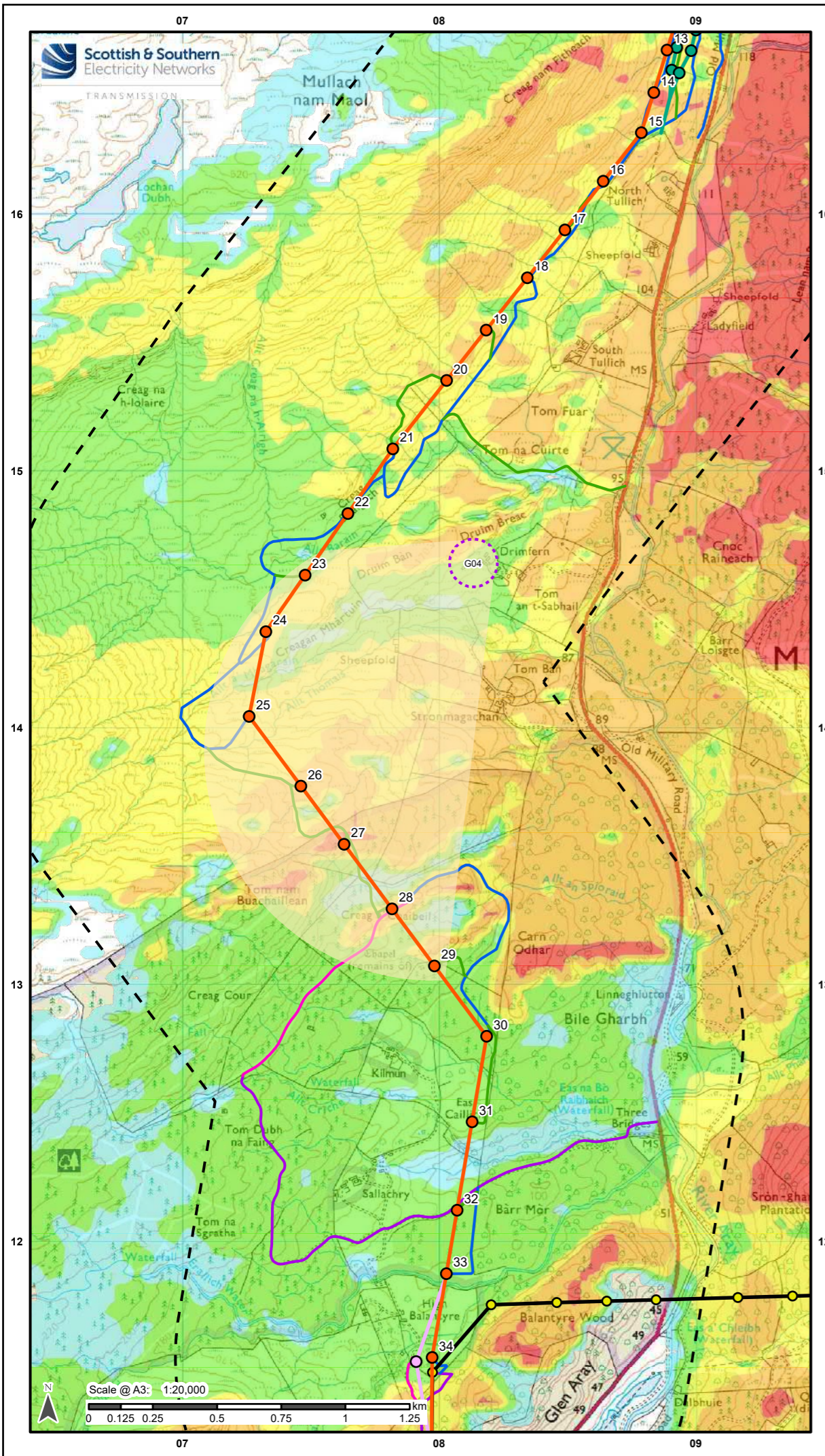
Project: 1620011091

Title: Creag Dhubh to Inveraray 275 kV Overhead Line

Figure 6.6.8f: Residential Visual Amenity - Group 03

Drawn by: NJ Date: 20/09/2022

Drawing: R162_11091_Fig6_6_8f_RVAA_A



Legend

- Proposed Alignment Towers
- Proposed Alignment
- Inveraray - Crossaig Towers
- Inveraray - Crossaig OHL
- ⬡ Assessed Group of Properties
- ⬡ 1 km Study Area
- ⬡ Theoretical Horizontal Angle of View Occupied by Proposed Towers

Temporary Diversions

- ITE / ITW 132 kV Diversion Poles
- 275 kV Diversion Towers
- ITE / ITW 132 kV Diversion
- 275 kV Diversion

Access Tracks

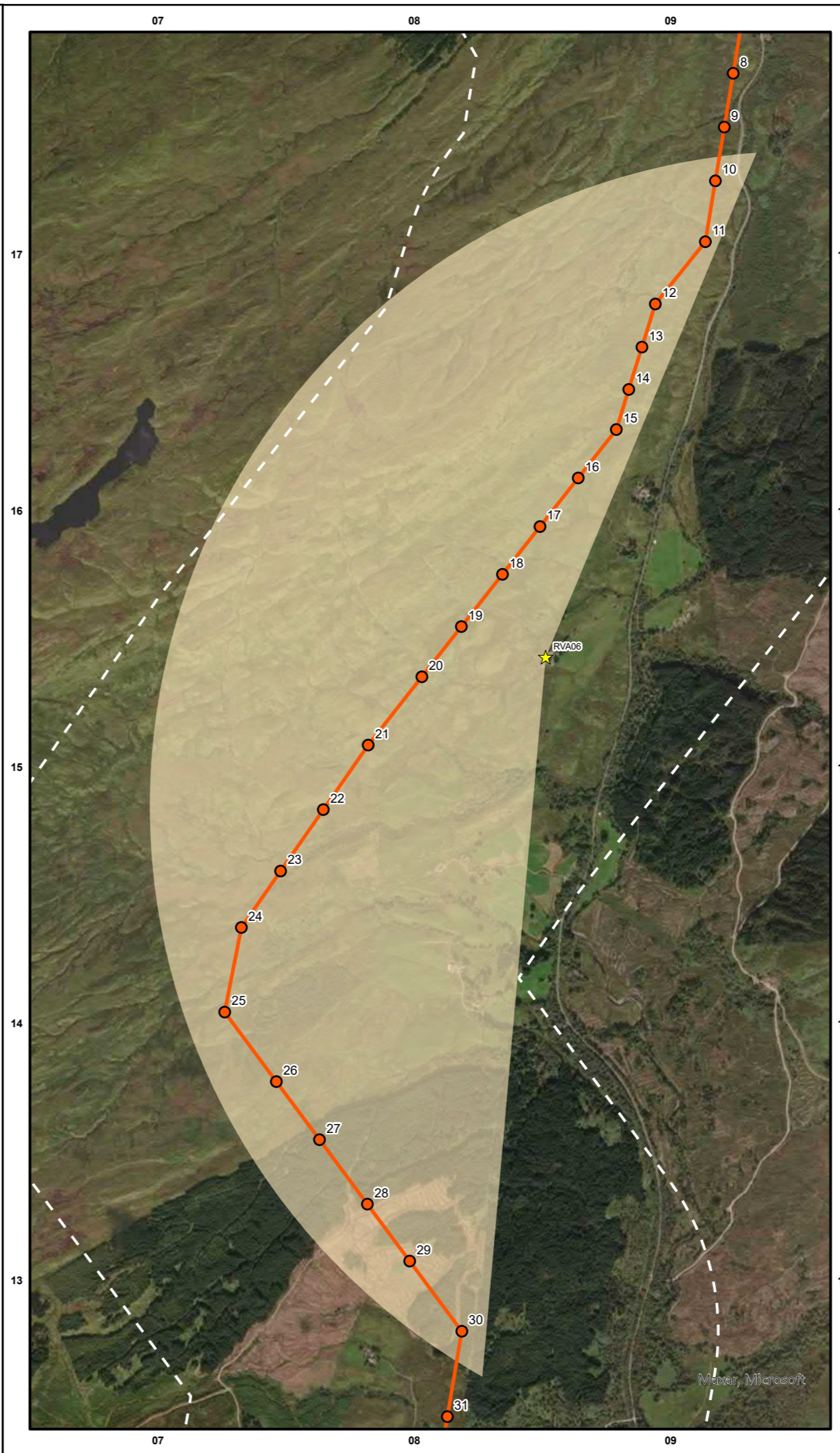
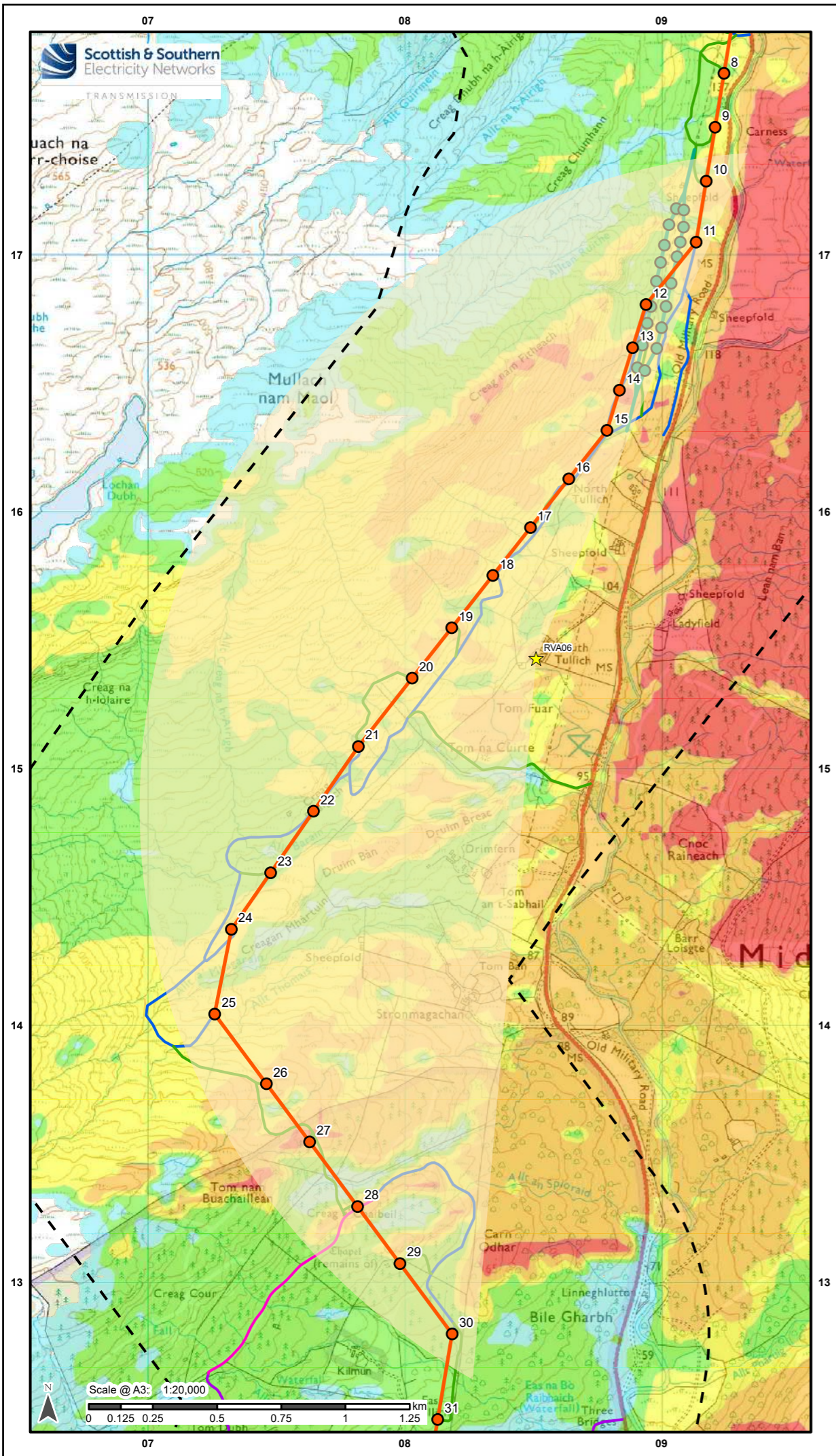
- Access Tracks - Track To Be Maintained
- Proposed Access Route (Perm)
- Proposed Access Route (Temp)
- Existing Access Tracks Upgrade

Number of Towers Visible (60 m Tower Height)

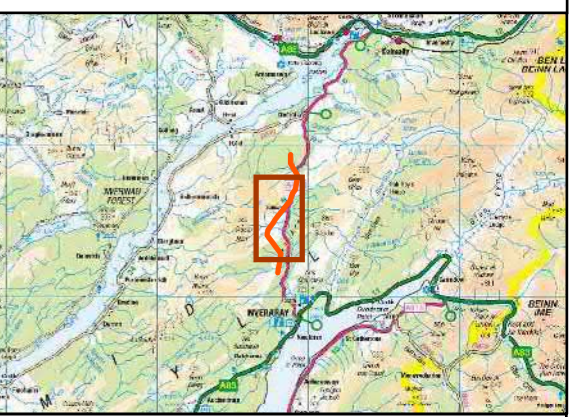
- 1 to 6
- 7 to 12
- 13 to 18
- 19 to 25
- 26 to 34

Reproduced by permission of Ordnance Survey on behalf of HMSO. Crown copyright and database right 2022 all rights reserved. Ordnance Survey Licence number EL273236.

Project No: LT000194
 Project: 1620011091
 Title: Creag Dhubh to Inveraray 275 kV Overhead Line
 Figure 6.6.9f: Residential Visual Amenity - G04
 Drawn by: NJ Date: 20/09/2022
 Drawing: R162_11091_Fig6_6_9f_RVAA_A



- ### Legend
- Proposed Alignment Towers
 - Proposed Alignment
 - [- -] 1 km Study Area
 - Yellow shaded area Theoretical Horizontal Angle of View Occupied by Proposed Towers
 - ★ Assessed Residential Properties
 - Temporary Diversions
 - ITE / ITW 132 kV Diversion Poles
 - ITE / ITW 132 kV Diversion
 - Access Tracks
 - Access Tracks - Track To Be Maintained
 - Proposed Access Route (Perm)
 - Proposed Access Route (Temp)
 - Existing Access Tracks Upgrade
 - Number of Towers Visible (60 m Tower Height)
 - Light Blue 1 to 6
 - Light Green 7 to 12
 - Yellow 13 to 18
 - Orange 19 to 25
 - Red 26 to 34



Reproduced by permission of Ordnance Survey on behalf of HMSO. Crown copyright and database right 2022 all rights reserved. Ordnance Survey Licence number EL273236.

Project No: LT000194

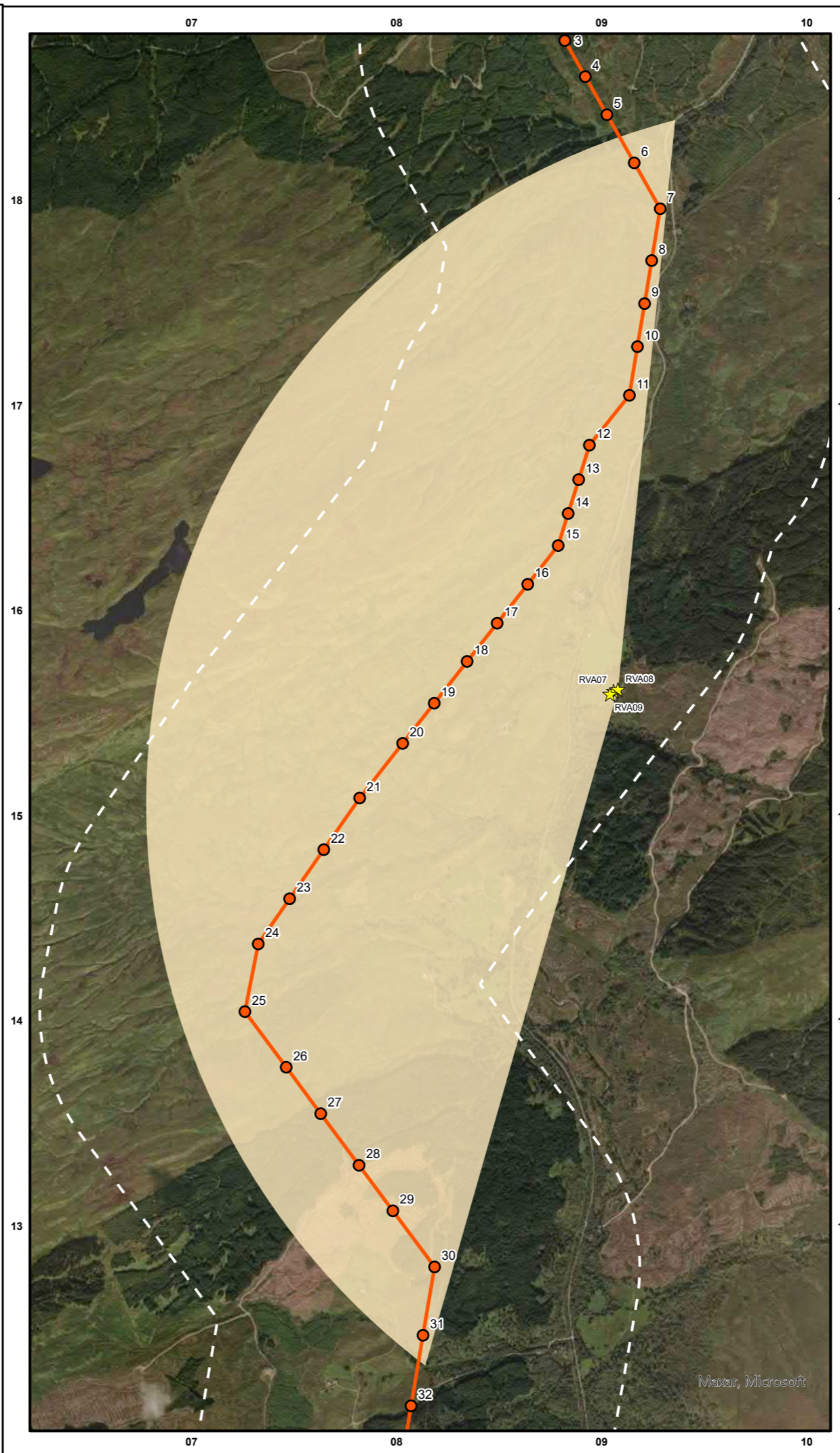
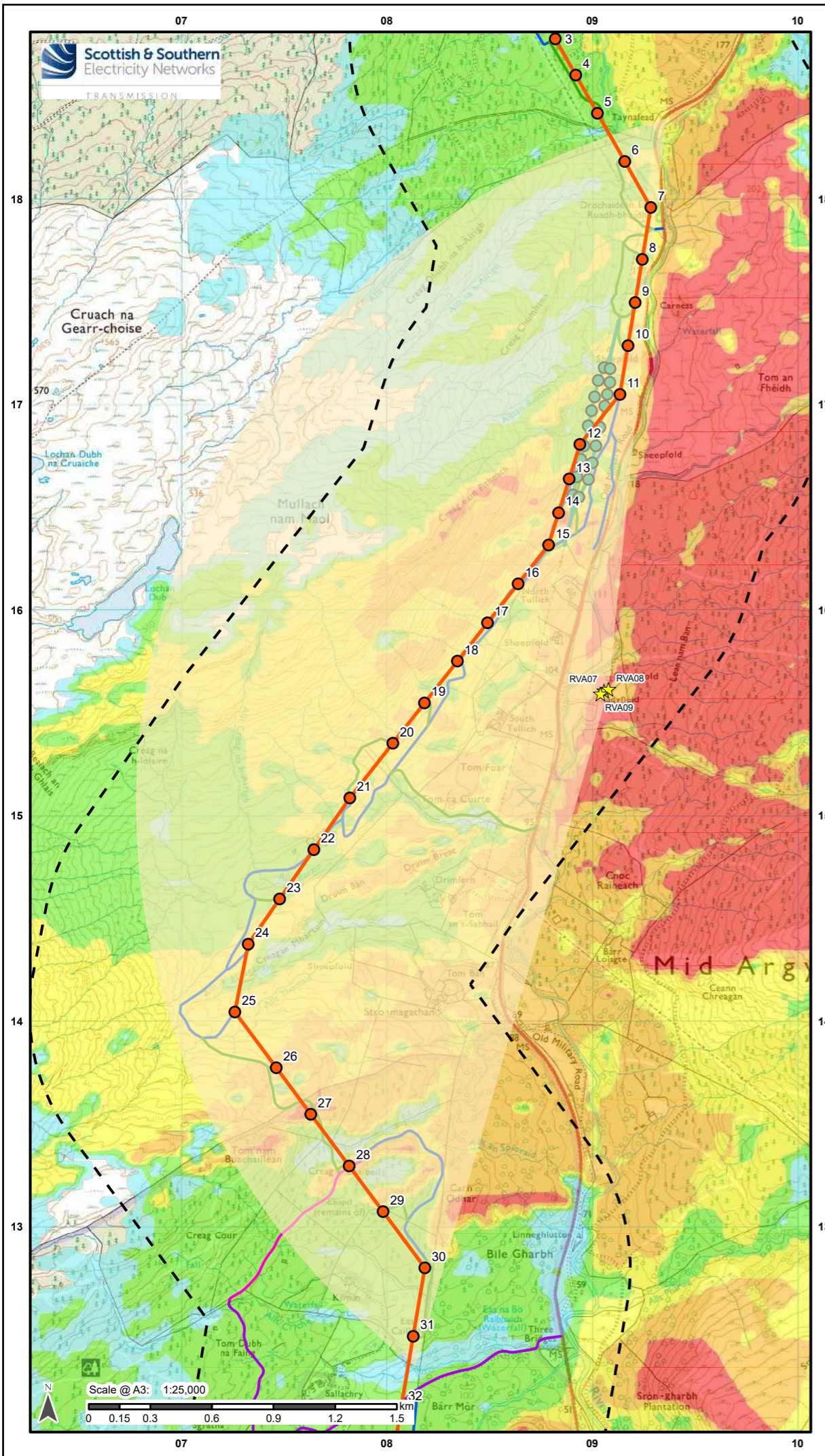
Project: 1620011091

Title: Creag Dhubh to Inveraray 275 kV Overhead Line

Figure 6.6.10f: Residential Visual Amenity - RVA06

Drawn by: NJ Date: 20/09/2022

Drawing: R162_11091_Fig6_6_10f_RVAA_A



- ### Legend
- Proposed Alignment Towers
 - Proposed Alignment
 - [- -] 1 km Study Area
 - ☐ Theoretical Horizontal Angle of View Occupied by Proposed Towers
 - ★ Assessed Residential Properties
 - Temporary Diversions
 - ITE / ITW 132 kV Diversion Poles
 - ITE / ITW 132 kV Diversion
 - Access Tracks
 - Access Tracks - Track To Be Maintained
 - Proposed Access Route (Perm)
 - Proposed Access Route (Temp)
 - Existing Access Tracks Upgrade
 - Number of Towers Visible (60 m Tower Height)
 - 1 to 6
 - 7 to 12
 - 13 to 18
 - 19 to 25
 - 26 to 34



Reproduced by permission of Ordnance Survey on behalf of HMSO. Crown copyright and database right 2022 all rights reserved. Ordnance Survey Licence number EL273236.

Project No: LT000194

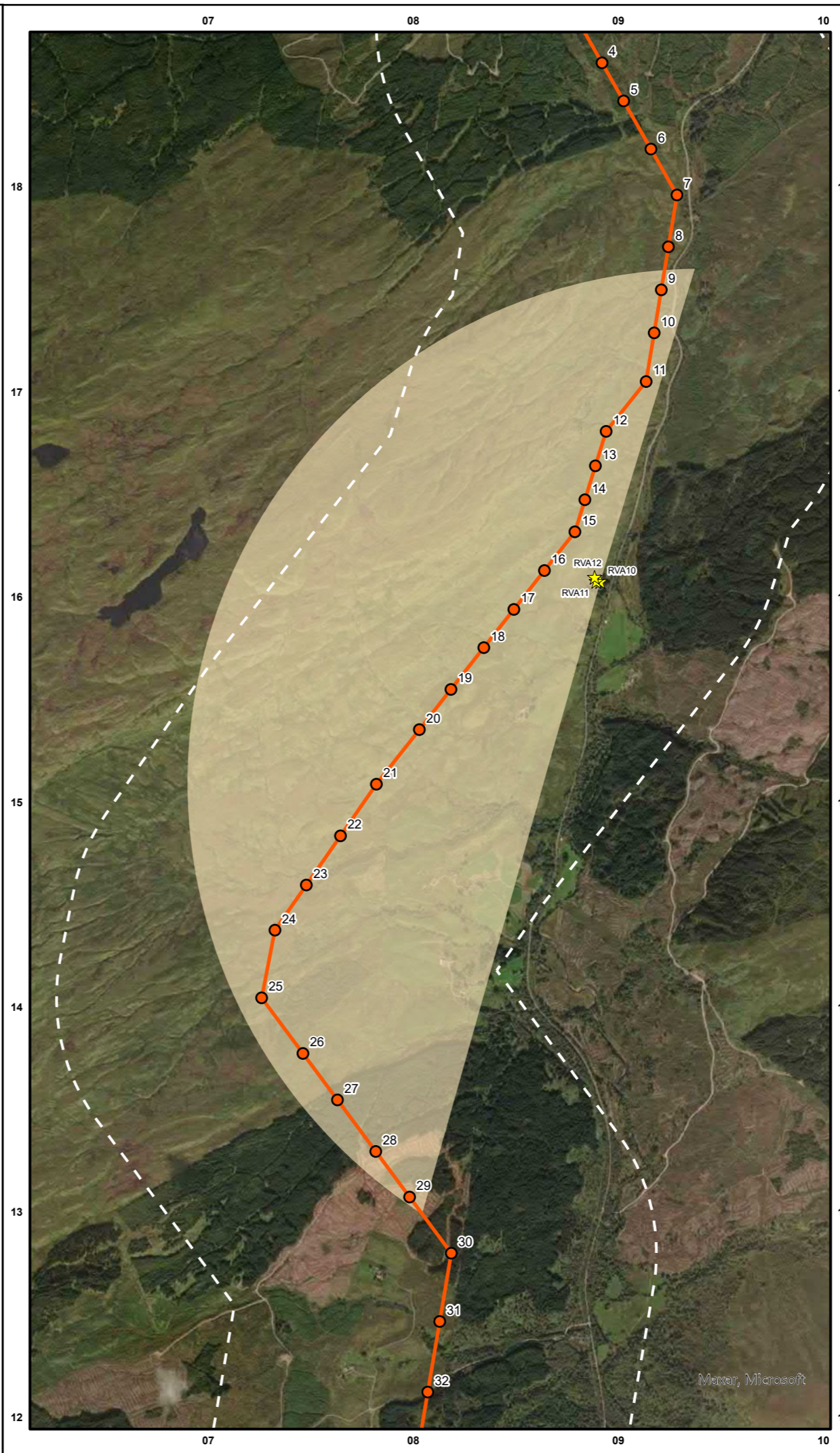
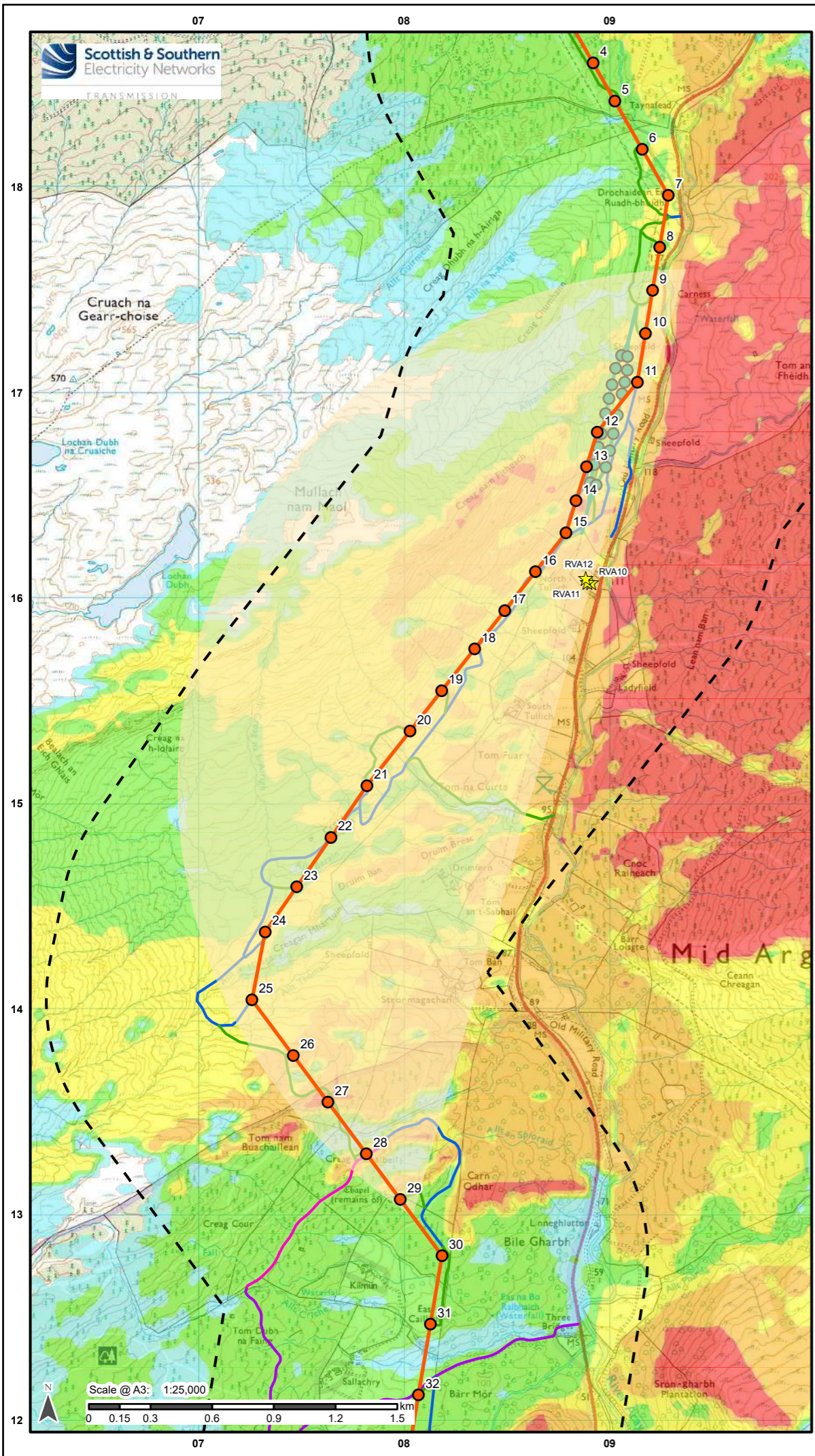
Project: 1620011091

Title: Creag Dhubh to Inveraray 275 kV Overhead Line

Figure 6.6.11f: Residential Visual Amenity - RVA07, RVA08 & RVA09

Drawn by: NJ Date: 20/09/2022

Drawing: R162_11091_Fig6_11f_RVAA_A



- ### Legend
- Proposed Alignment Towers
 - Proposed Alignment
 - ★ Assessed Residential Properties
 - Theoretical Horizontal Angle of View Occupied by Proposed Towers
 - ⌈ ⌋ 1 km Study Area
 - Temporary Diversions
 - ITE / ITW 132 kV Diversion Poles
 - ITE / ITW 132 kV Diversion
 - Access Tracks
 - Access Tracks - Track To Be Maintained
 - Proposed Access Route (Perm)
 - Proposed Access Route (Temp)
 - Existing Access Tracks Upgrade
 - Number of Towers Visible (60 m Tower Height)
 - 1 to 6
 - 7 to 12
 - 13 to 18
 - 19 to 25
 - 26 to 34



Reproduced by permission of Ordnance Survey on behalf of HMSO. Crown copyright and database right 2022 all rights reserved. Ordnance Survey Licence number EL273236.

Project No: LT000194

Project: 1620011091

Title: Creag Dhubh to Inveraray 275 kV Overhead Line

Figure 6.6.12: Residential Visual Amenity - RVA10, RVA11 & RVA12

Drawn by: NJ Date: 20/09/2022

Drawing: R162_11091_Fig6_12f_RVAA_A