

Legend

- Blackhillock Substation
- Proposed Elchies (Rothes III) Substation
- Preferred Alignment
- - - Preferred Alignment (Cabled Section)
- Alignment Variant P1
- - - Alignment Variant P1 (Cabled Section)
- Alignment Variant P2
- - - Alignment Variant P3 (Cabled Section)
- - - Alignment Variant P4 (Cabled Section)
- Alignment Variant P5
- Alignment Variant P6
- Alignment Variant P7
- Alignment Variant P8
- Alignment Variant A
- Alignment Variant A1

Landuse and Recreation

- Castle / Estate
- Golf Course
- Picnic Site
- Tourist Info Centre
- Viewpoint
- Mountain Summits
- Canoe / Kayak Launch Point
- Railway Station
- Whiskey Distillery
- - - Speyside Way (Long Distance Route)
- - - Dufftown to Keith Railway
- Core Paths
- Mountain Biking Tracks

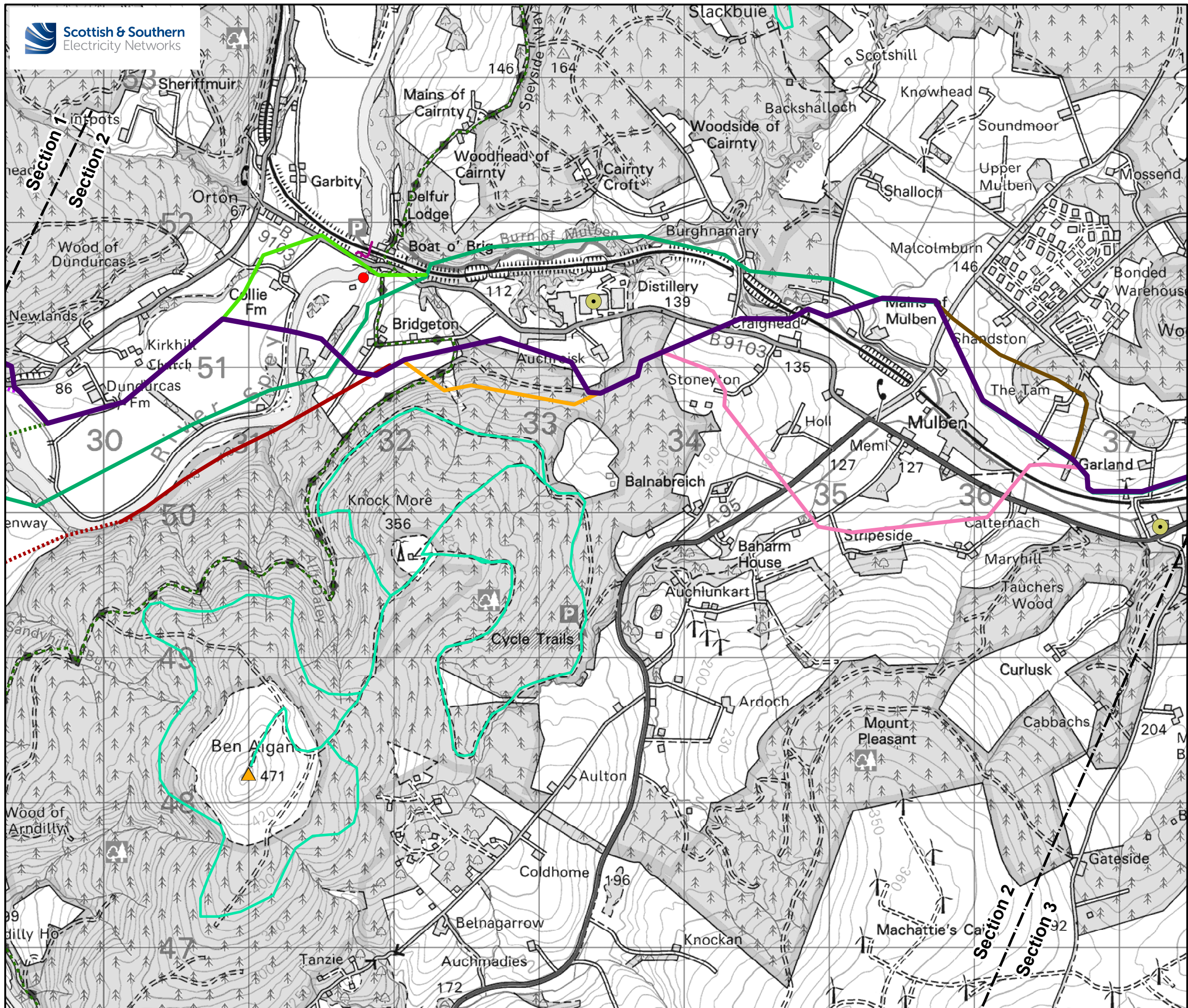
N
0 0.25 0.5 1 km
Scale - 1:25,000 @ A3

Reproduced by permission of Ordnance Survey on behalf of HMSO.
Crown copyright and database right 2021 all rights reserved.
Ordnance Survey Licence number EL273236.

Project No: LT122
Project: Elchies (Rothes III) Wind Farm Grid Connection

Title: Figure 10 - Landuse and Recreation (Page 1 of 3)

Drawn by: LT Date: 20/09/2021
Drawing: 119012-D-CD-10.1-1.0.0



Legend

- Blackhillock Substation
- Proposed Elchies (Rothes III) Substation
- Preferred Alignment
- - - Preferred Alignment (Cabled Section)
- Alignment Variant P1
- - - Alignment Variant P1 (Cabled Section)
- Alignment Variant P2
- - - Alignment Variant P3 (Cabled Section)
- - - Alignment Variant P4 (Cabled Section)
- Alignment Variant P5
- Alignment Variant P6
- Alignment Variant P7
- Alignment Variant P8
- Alignment Variant A
- Alignment Variant A1

Landuse and Recreation

- Castle / Estate
- Golf Course
- Picnic Site
- Tourist Info Centre
- Viewpoint
- Mountain Summits
- Canoe / Kayak Launch Point
- Railway Station
- Whiskey Distillery
- - - Speyside Way (Long Distance Route)
- - - Dufftown to Keith Railway
- Core Paths
- Mountain Biking Tracks

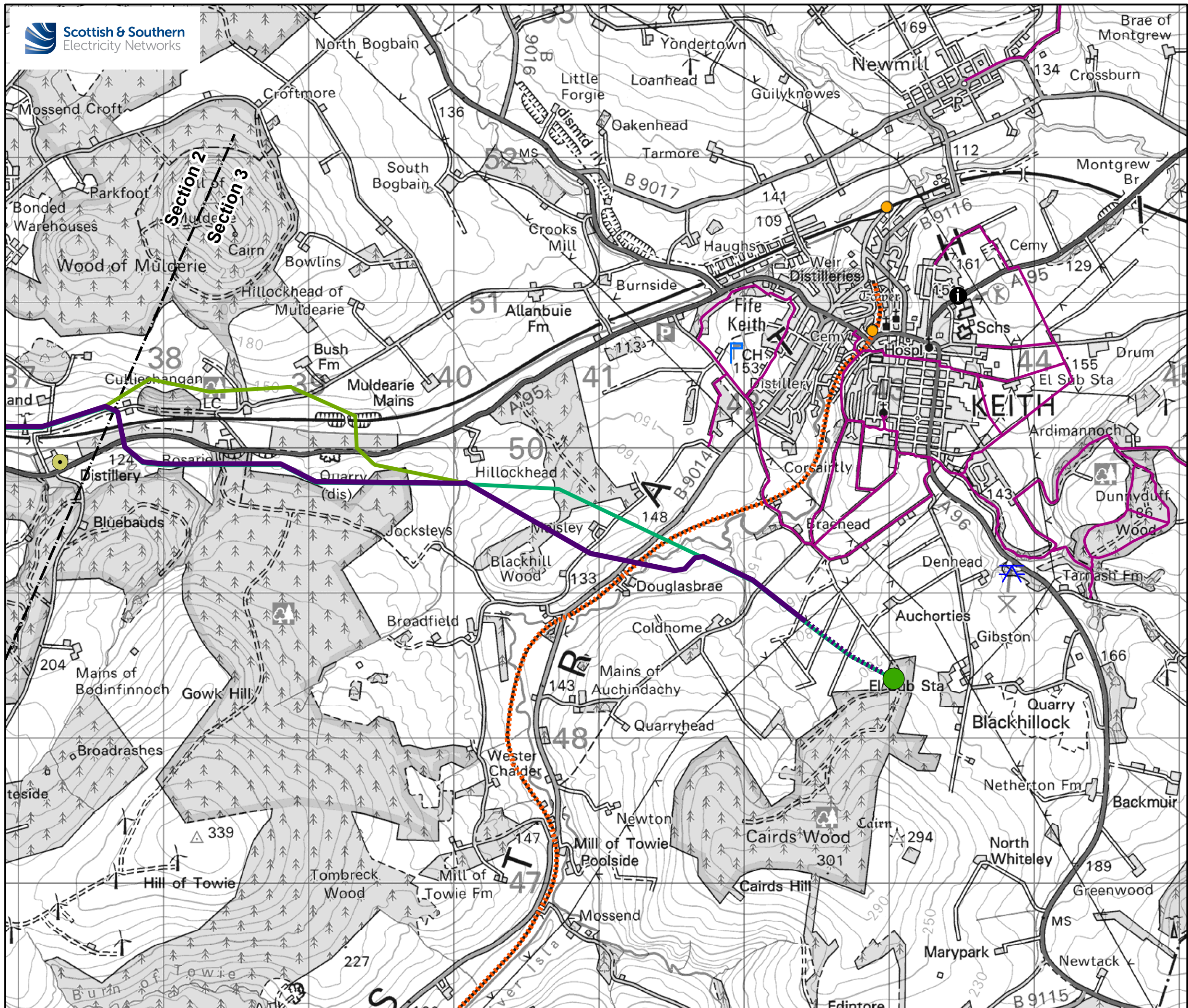
N
0 0.25 0.5 1 km
Scale - 1:25,000 @ A3

Reproduced by permission of Ordnance Survey on behalf of HMSO.
Crown copyright and database right 2021 all rights reserved.
Ordnance Survey Licence number EL273236.

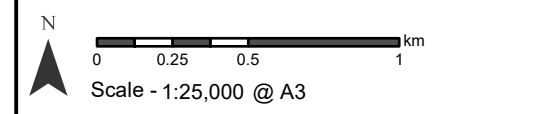
Project No: LT122
Project: Elchies (Rothes III) Wind Farm
Grid Connection

Title: Figure 10 - Landuse and Recreation
(Page 2 of 3)

Drawn by: LT Date: 20/09/2021
Drawing: 119012-D-CD-10.2-1.0.0



- Legend**
- Blackhillock Substation
 - Proposed Elchies (Rothes III) Substation
 - Preferred Alignment
 - - - Preferred Alignment (Cabled Section)
 - Alignment Variant P1
 - - - Alignment Variant P1 (Cabled Section)
 - Alignment Variant P2
 - - - Alignment Variant P3 (Cabled Section)
 - - - Alignment Variant P4 (Cabled Section)
 - Alignment Variant P5
 - Alignment Variant P6
 - Alignment Variant P7
 - Alignment Variant P8
 - Alignment Variant A
 - Alignment Variant A1
- Landuse and Recreation**
- Castle / Estate
 - Golf Course
 - Picnic Site
 - Tourist Info Centre
 - Viewpoint
 - Mountain Summits
 - Canoe / Kayak Launch Point
 - Railway Station
 - Whiskey Distillery
 - - - Speyside Way (Long Distance Route)
 - - - Dufftown to Keith Railway
 - Core Paths
 - Mountain Biking Tracks



Reproduced by permission of Ordnance Survey on behalf of HMSO.
Crown copyright and database right 2021 all rights reserved.
Ordnance Survey Licence number EL273236.

Project No: LT122
Project: Elchies (Rothes III) Wind Farm
Grid Connection

Title: Figure 10 - Landuse and Recreation
(Page 3 of 3)

Drawn by: LT Date: 20/09/2021
Drawing: 119012-D-CD-10.3-1.0.0