

Legend

- Blackhillock Substation
- Proposed Elchies (Rothes III) Substation
- Preferred Alignment
- - - Preferred Alignment (Cabled Section)
- Alignment Variant P1
- - - Alignment Variant P1 (Cabled Section)
- Alignment Variant P2
- - - Alignment Variant P2 (Cabled Section)
- Alignment Variant P3 (Cabled Section)
- - - Alignment Variant P3 (Cabled Section)
- Alignment Variant P4 (Cabled Section)
- - - Alignment Variant P4 (Cabled Section)
- Alignment Variant P5
- Alignment Variant P6
- Alignment Variant P7
- Alignment Variant P8
- Alignment Variant A
- Alignment Variant A1

Landscape Character Types

- 027. Farmed Moorland Edge - Aberdeenshire
- 285. Rolling Farmland and Forests - Moray & Nairn
- 287. Broad Farmed Valley
- 288. Upland Farmland
- 289. Upland Farmed Valleys
- 290. Upland Moorland and Forestry
- 292. Open Upland
- 293. Low Forested Hills
- 294. Upland Valleys - Moray & Nairn

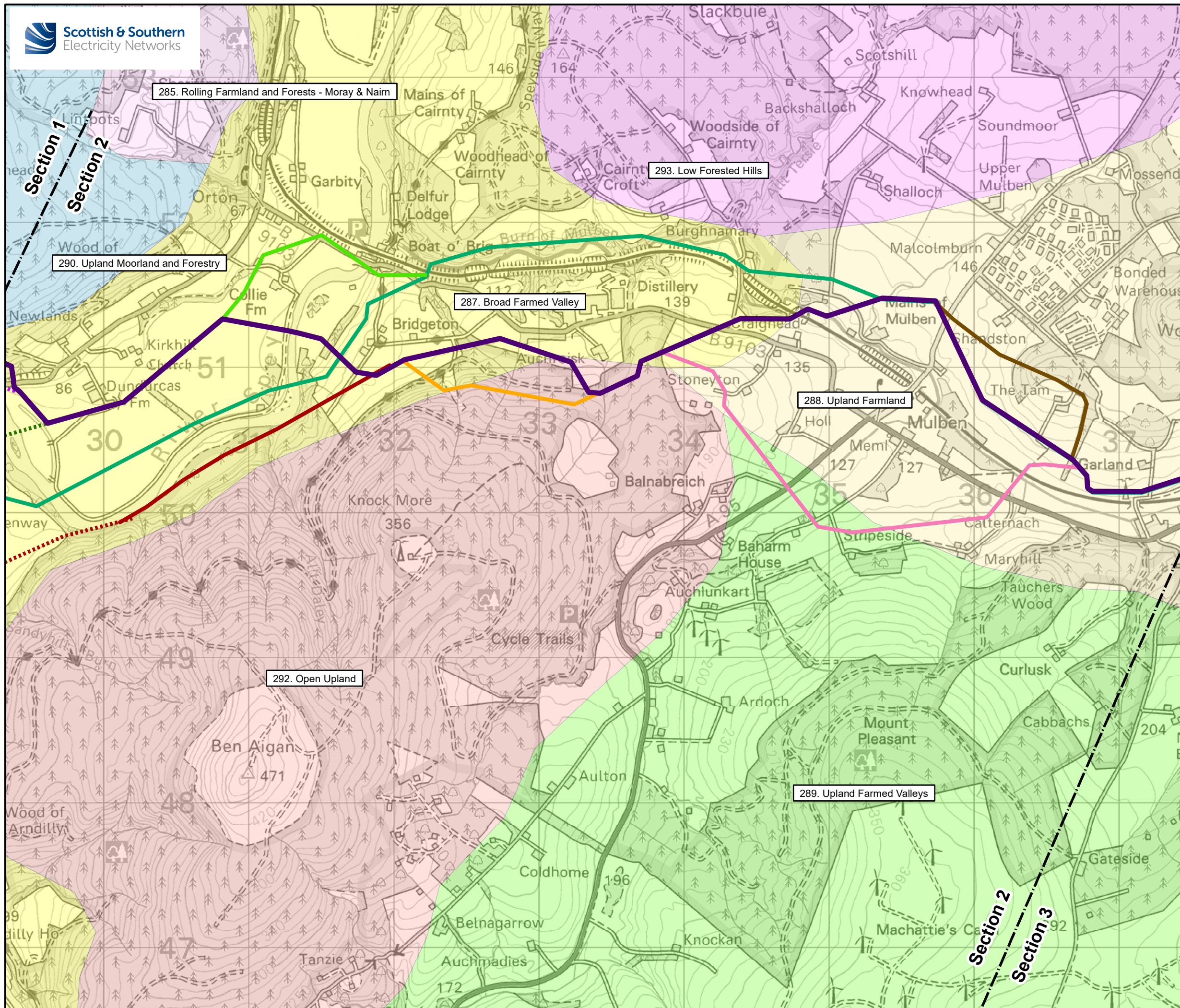
N
0 0.25 0.5 1 km
Scale - 1:25,000 @ A3

Reproduced by permission of Ordnance Survey on behalf of HMSO.
Crown copyright and database right 2021 all rights reserved.
Ordnance Survey Licence number EL273236.

Project No: LT122
Project: Elchies (Rothes III) Wind Farm Grid Connection

Title: Figure 7 - Landscape Character Types
(Page 1 of 3)

Drawn by: LT Date: 20/09/2021
Drawing: 119012-D-CD-7.1-1.0.0

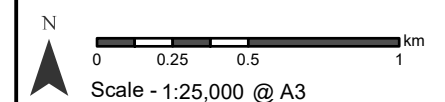


Legend

- Blackhillock Substation
- Proposed Elchies (Rothes III) Substation
- Preferred Alignment
- - - - Preferred Alignment (Cabled Section)
- Alignment Variant P1
- - - - Alignment Variant P1 (Cabled Section)
- Alignment Variant P2
- - - - Alignment Variant P3 (Cabled Section)
- - - - Alignment Variant P4 (Cabled Section)
- Alignment Variant P5
- Alignment Variant P6
- Alignment Variant P7
- Alignment Variant P8
- Alignment Variant A
- Alignment Variant A1

Landscape Character Types

- 027. Farmed Moorland Edge - Aberdeenshire
- 285. Rolling Farmland and Forests - Moray & Nairn
- 287. Broad Farmed Valley
- 288. Upland Farmland
- 289. Upland Farmed Valleys
- 290. Upland Moorland and Forestry
- 292. Open Upland
- 293. Low Forested Hills
- 294. Upland Valleys - Moray & Nairn

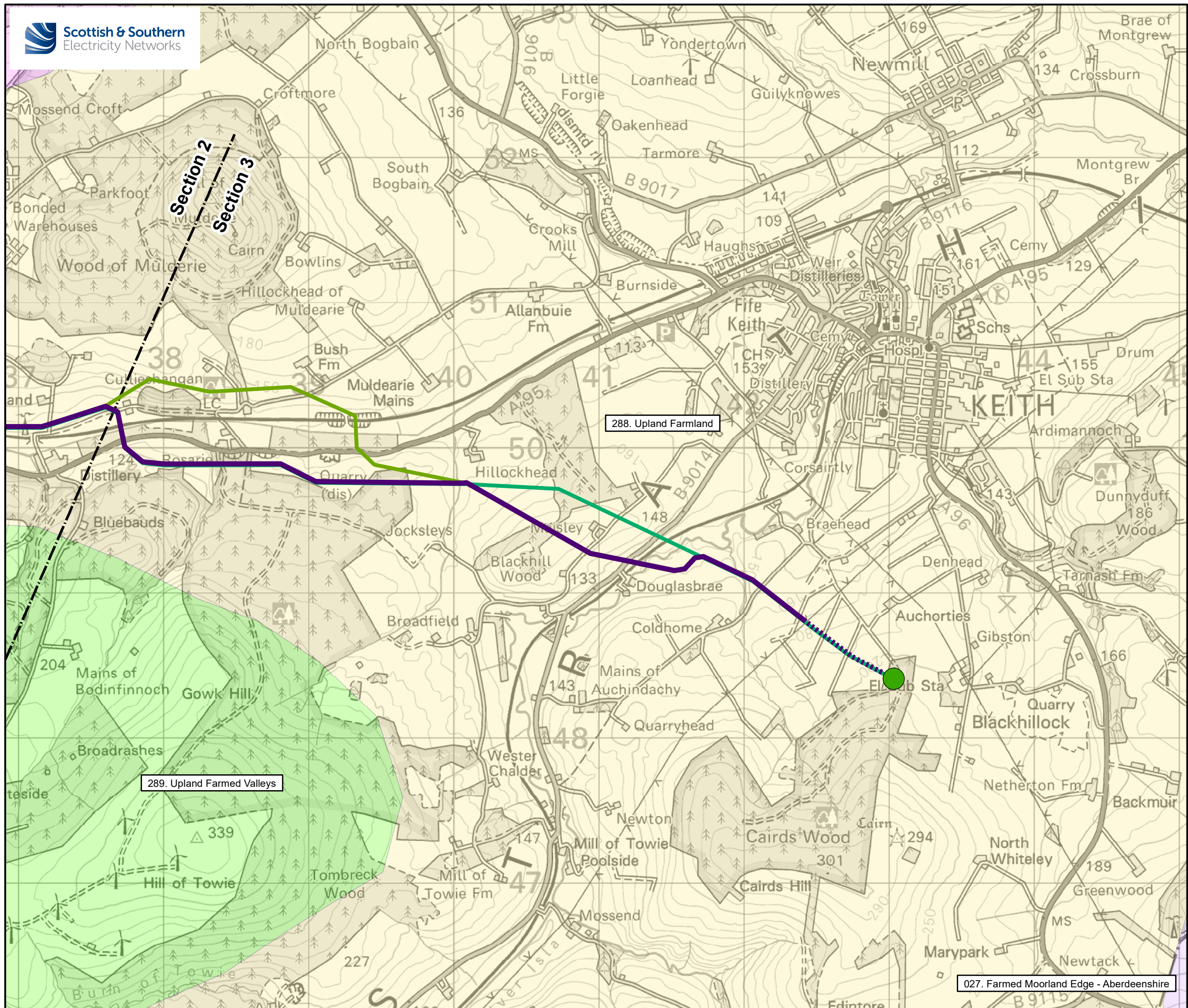


Reproduced by permission of Ordnance Survey on behalf of HMSO.
Crown copyright and database right 2021 all rights reserved.
Ordnance Survey Licence number EL273236.

Project No: LT122
Project: Elchies (Rothes III) Wind Farm Grid Connection

Title: Figure 7 - Landscape Character Types
(Page 2 of 3)

Drawn by: LT Date: 20/09/2021
Drawing: 119012-D-CD-7.2-1.0.0



Legend

- Blackhillock Substation
- Proposed Elchies (Rothes III) Substation
- Preferred
- - - - - Preferred Alignment (Cabled Section)
- Alignment Variant P1
- - - - - Alignment Variant P1 (Cabled Section)
- Alignment Variant P2
- - - - - Alignment Variant P3 (Cabled Section)
- - - - - Alignment Variant P4 (Cabled Section)
- Alignment Variant P5
- Alignment Variant P6
- Alignment Variant P7
- Alignment Variant P8
- Alignment Variant A
- Alignment Variant A1

Landscape Character Types

- 027. Farmed Moorland Edge - Aberdeenshire
- 285. Rolling Farmland and Forests - Moray & Nairn
- 287. Broad Farmed Valley
- 288. Upland Farmland
- 289. Upland Farmed Valleys
- 290. Upland Moorland and Forestry
- 292. Open Upland
- 293. Low Forested Hills
- 294. Upland Valleys - Moray & Nairn

N
0 0.25 0.5 1 km
Scale - 1:25,000 @ A3

Reproduced by permission of Ordnance Survey on behalf of HMSO.
Crown copyright and database right 2021 all rights reserved.
Ordnance Survey Licence number EL273236.

Project No: LT122
Project: Elchies (Rothes III) Wind Farm Grid Connection

Title: Figure 7 - Landscape Character Types
(Page 3 of 3)

Drawn by: LT Date: 20/09/2021
Drawing: 119012-D-CD-7.3-1.0.0