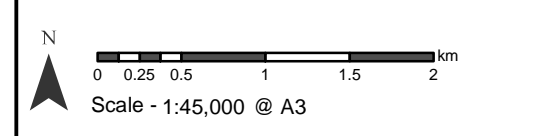


**Legend**

- Proposed Elchies Substation
- Blackhillock Substation
- Route Option A
- Route Option A1
- Route Option A2
- Route Option B
- Route Option C

**Ecological Designations and Constraints**

- Site of Special Scientific Interest (SSSI)
- Special Area of Conservation (SAC)
- Ancient Woodland Index (AWI) (Classification 1A and 2A)
- Heathland (Annex 1 habitat)
- Potential GWDTE

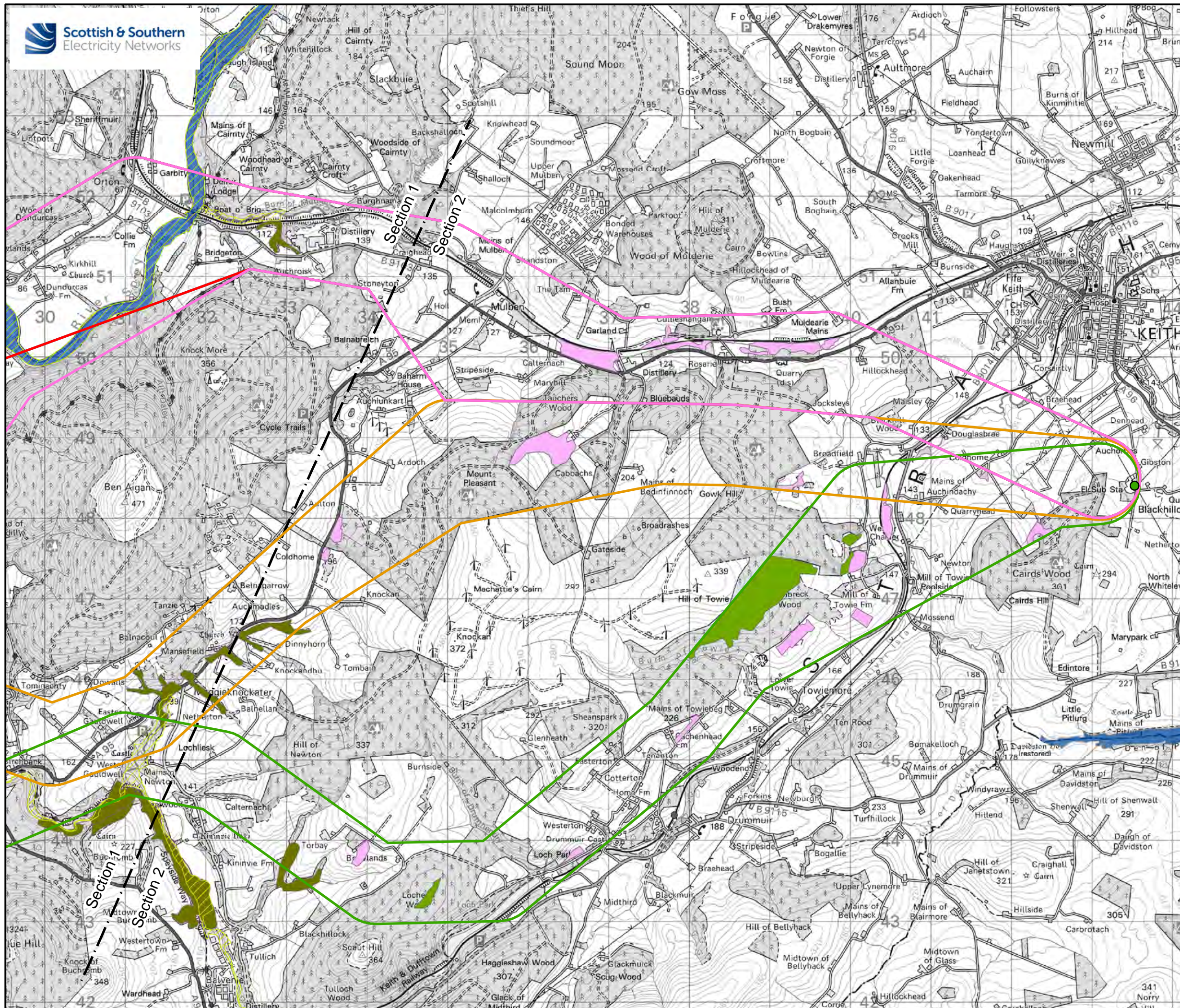


Reproduced by permission of Ordnance Survey on behalf of HMSO.  
Crown copyright and database right 2020 all rights reserved.  
Ordnance Survey Licence number EL273236.

Project No: LT122  
Project: Elchies (Rothes III) Wind Farm  
Grid Connection

Title: Figure 3 - Ecological Designations and  
Constraints  
(Page 1 of 2)

Drawn by: TD / TW Date: 02/07/2020  
Drawing: 119012-D-CD-3.1-1.0.0

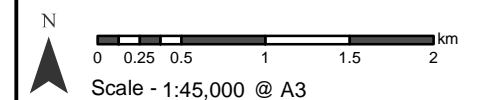


**Legend**

- Proposed Elchies Substation
- Blackhillock Substation
- Route Option A
- Route Option A1
- Route Option A2
- Route Option B
- Route Option C

**Ecological Designations and Constraints**

- Site of Special Scientific Interest (SSSI)
- Special Area of Conservation (SAC)
- Ancient Woodland Index (AWI) (Classification 1A and 2A)
- Heathland (Annex 1 habitat)
- Potential GWDE



Reproduced by permission of Ordnance Survey on behalf of HMSO.  
Crown copyright and database right 2020 all rights reserved.  
Ordnance Survey Licence number EL273236.

Project No: LT122  
Project: Elchies (Rothes III) Wind Farm  
Grid Connection

Title: Figure 3 - Ecological Designations and Constraints  
(Page 2 of 2)

Drawn by: TD / TW Date: 02/07/2020  
Drawing: 119012-D-CD-3.2-1.0.0