

**Legend**

- Proposed Elchies Substation
- Blackhillock Substation
- Route Option A
- Route Option A1
- Route Option A2
- Route Option B
- Route Option C

**Designation and Constraints**

- Site of Special Scientific Interest (SSSI)
- ▨ Special Area of Conservation (SAC)
- Watercourses
- Drinking Water Protection Area (DWPA)
- ▲ Private Water Supply (PWS)

**Peatland Classification**

- 1
- 2
- 3
- 5

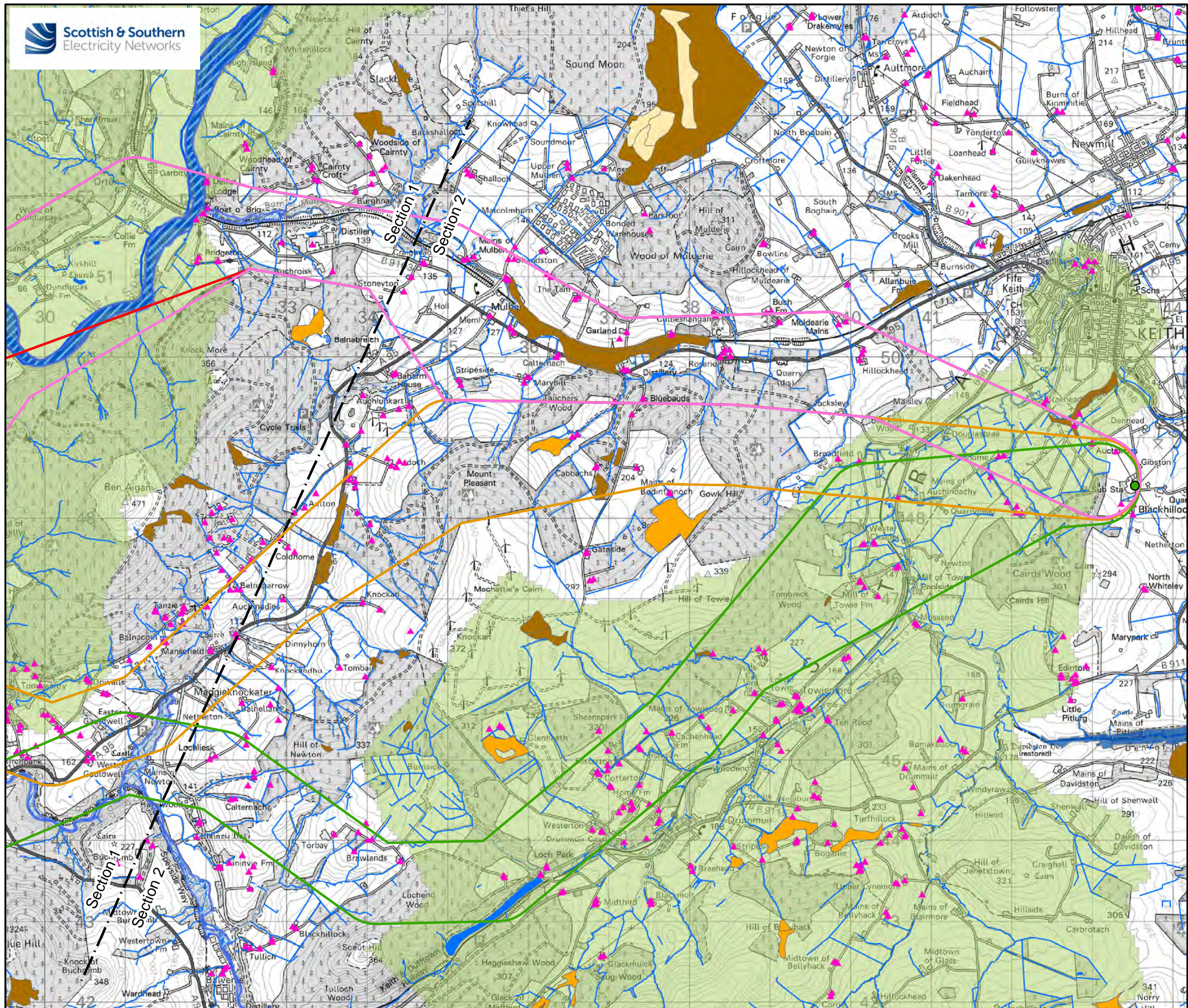
N  
0 0.25 0.5 1 1.5 2 km  
Scale - 1:45,000 @ A3

Reproduced by permission of Ordnance Survey on behalf of HMSO.  
Crown copyright and database right 2020 all rights reserved.  
Ordnance Survey Licence number EL273236.

Project No: LT122  
Project: Elchies (Rothes III) Wind Farm Grid Connection

Title: Figure 4 - Geology, Hydrology and Hydrogeology (Page 1 of 2)

Drawn by: TD / TW Date: 02/07/2020  
Drawing: 119012-D-CD-4.1-1.0.0



**Legend**

- Proposed Elchies Substation
- Blackhillock Substation
- Route Option A
- Route Option A1
- Route Option A2
- Route Option B
- Route Option C

**Designation and Constraints**

- Site of Special Scientific Interest (SSSI)
- ▨ Special Area of Conservation (SAC)
- Watercourses
- Drinking Water Protection Area (DWPA)
- ▲ Private Water Supply (PWS)

**Peatland Classification**

- 1
- 2
- 3
- 5

N  
0 0.25 0.5 1 1.5 2 km  
Scale - 1:45,000 @ A3

Reproduced by permission of Ordnance Survey on behalf of HMSO.  
Crown copyright and database right 2020 all rights reserved.  
Ordnance Survey Licence number EL273236.

Project No: LT122  
Project: Elchies (Rothes III) Wind Farm Grid Connection

Title: Figure 4 - Geology, Hydrology and Hydrogeology (Page 2 of 2)

Drawn by: TD / TW Date: 02/07/2020  
Drawing: 119012-D-CD-4.2-1.0.0