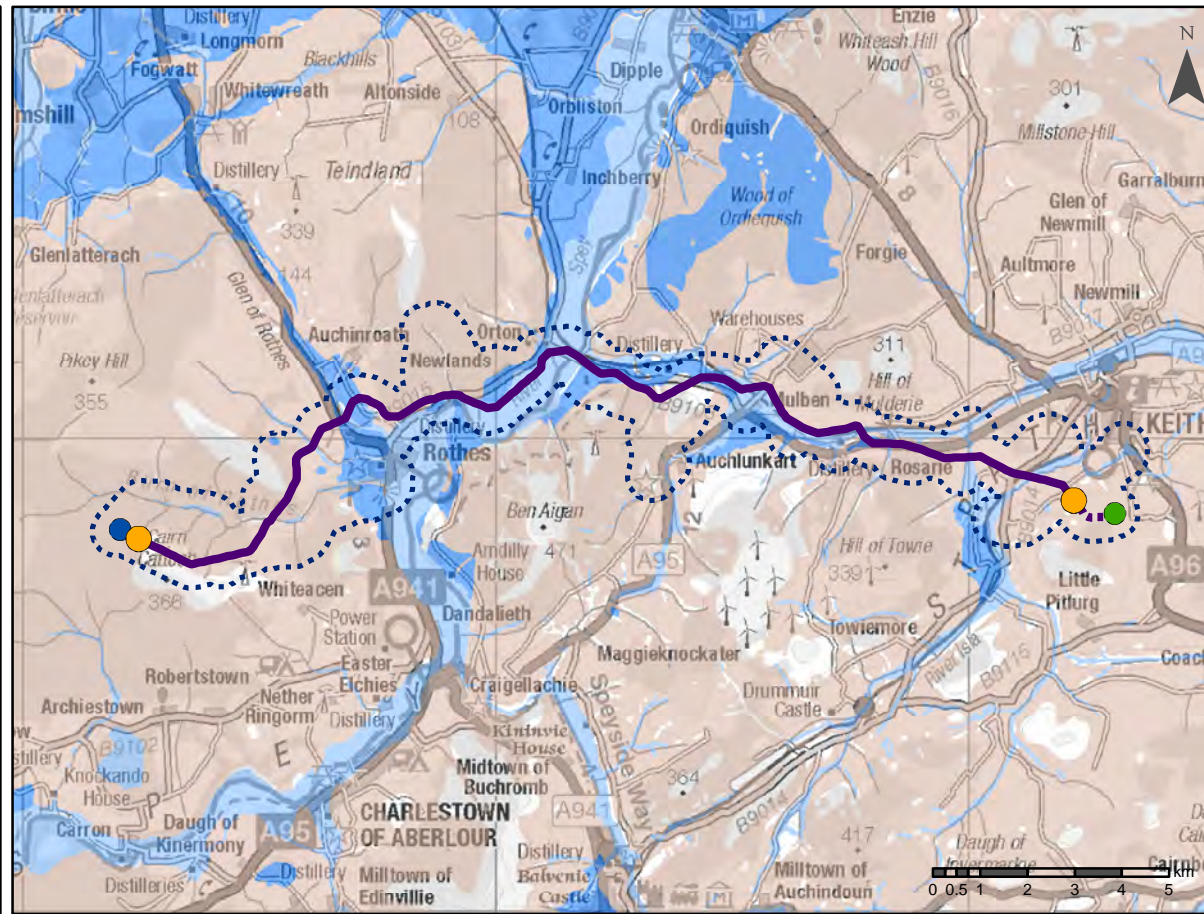


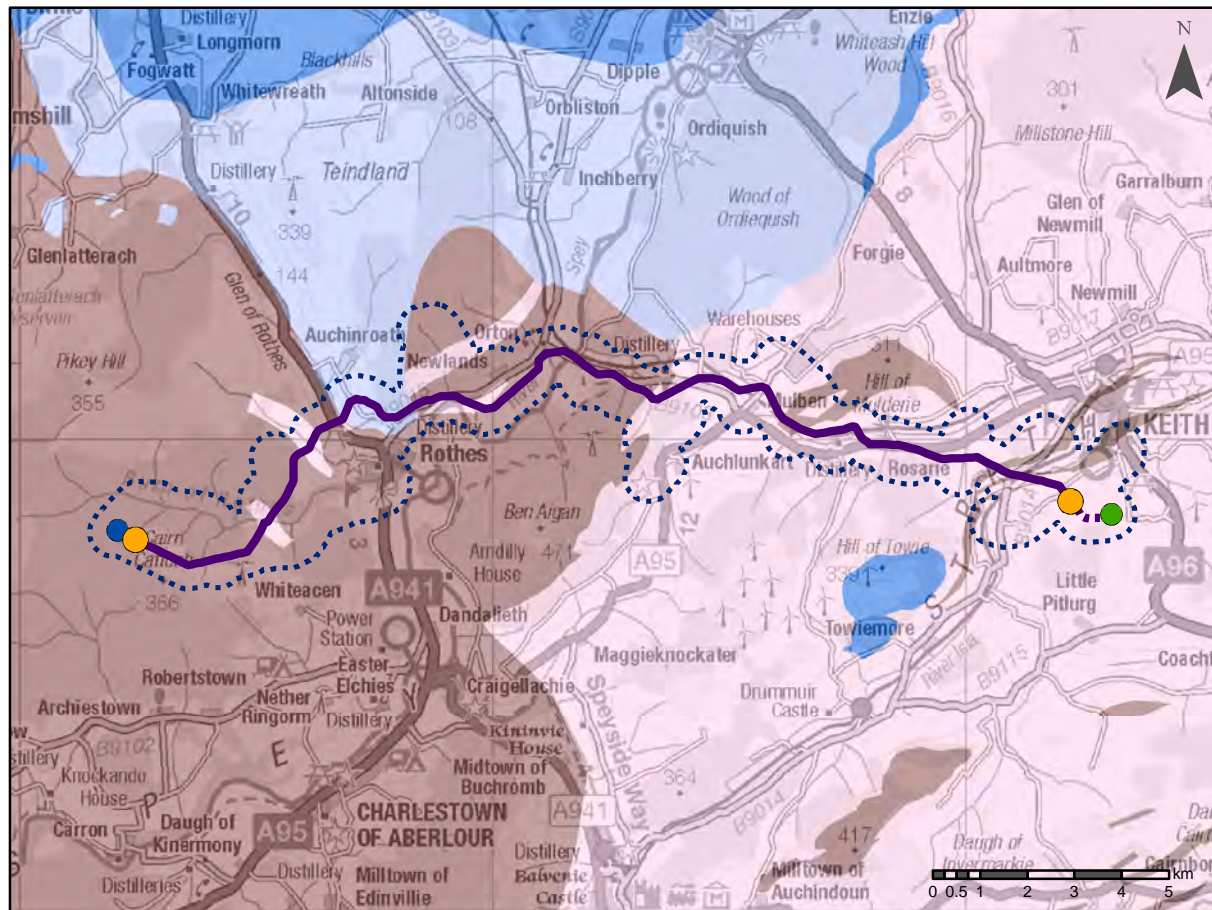
MAP EXTRACT

Scale - 1:500,000 @ A3



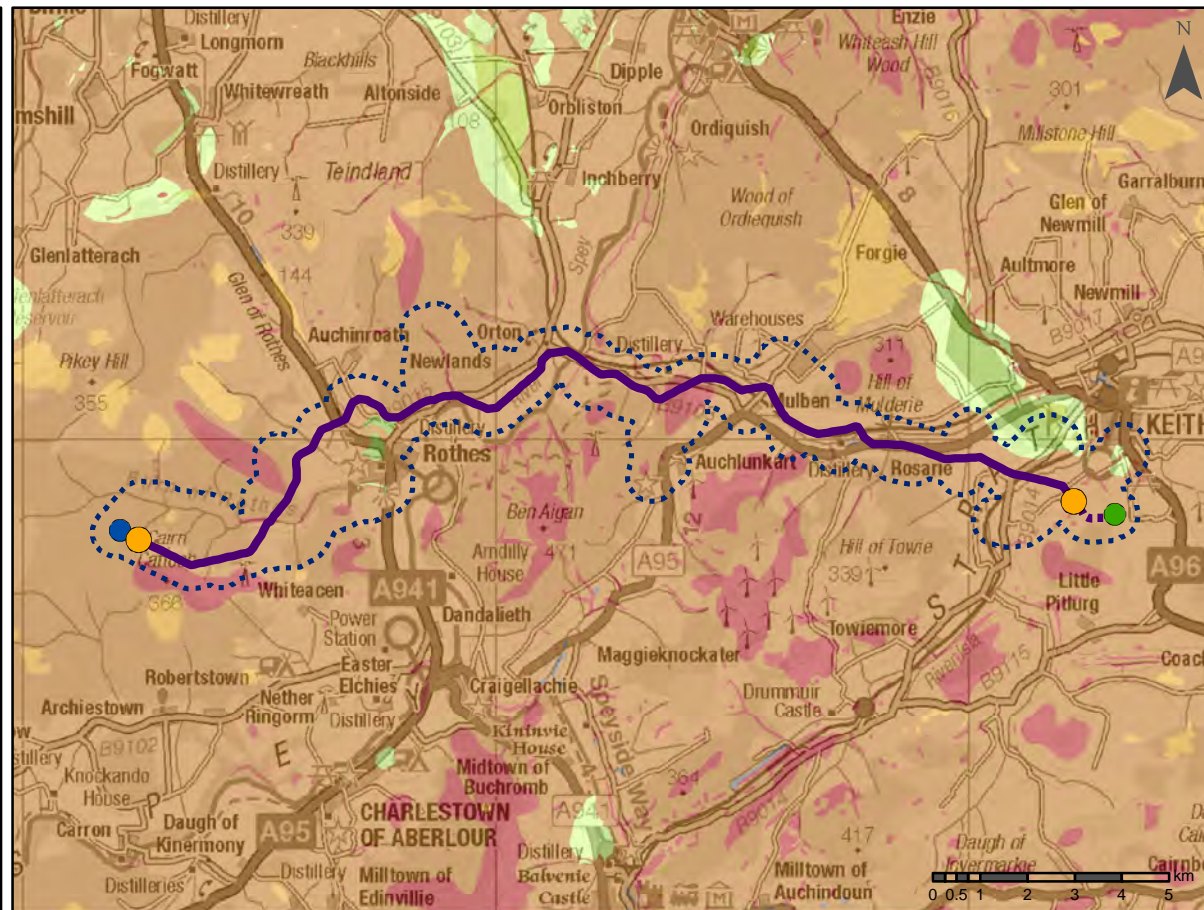
SUPERFICIAL AQUIFERS

Scale - 1:160,000 @ A3



BEDROCK AQUIFERS

Scale - 1:160,000 @ A3



GROUNDWATER VULNERABILITY IN THE UPPERMOST AQUIFER

Scale - 1:160 000 @ A3

Legend

- Study Area 500 m Buffer
- Proposed Cable Sealing End (CSE)
- Consented Rothes III Wind Farm On-Site Substation
- Blackhillock Substation
- Proposed Overhead Line
- Proposed Underground Cable

Superficial Aquifers

- Intergranular; High Productivity
- Intergranular; Moderate to High Productivity
- Not a significant aquifer

Bedrock Aquifers

- Fracture; Low Productivity
- Fracture; Very Low Productivity
- Intergranular/Fracture; Low Productivity
- Intergranular/Fracture; Moderate Productivity
- Intergranular & Fracture Flow; High Productivity

Groundwater Vulnerability in the Uppermost Aquifer Vulnerability Class

- 5 - Vulnerable to Most Pollutants, With Rapid Impact in Many Scenarios.
- 4a - Vulnerable to Those Pollutants not Readily Adsorbed or Transformed. Less Likely to Have Clay Present in Superficial Deposits (Therefore Generally Higher Vulnerability Than 4b).
- 4b - Vulnerable to Those Pollutants not Readily Adsorbed or Transformed. More Likely to Have Clay Present in Superficial Deposits (Therefore Generally Lower Vulnerability Than 4a).
- 3 - Vulnerable to Some Pollutants; Many Others Significantly Attenuated.
- 2 - Vulnerable to Some Pollutants, but Only When they are Continuously Discharged/Leached.
- 1 - Only Vulnerable to Conservative Pollutants in the Long Term when Continuously and Widely Discharged/Leached.
- 0 - Not Sufficient Data to Classify Vulnerability: e.g. Below Lochs; in Urban Areas Where Geological and/or Soils Data are Missing; or Where Superficial Deposits are Mapped but not Classified.

British Geological Survey ©NERC. All Rights Reserved.

Reproduced by permission of Ordnance Survey on behalf of HMSO.  
Crown copyright and database right 2023 all rights reserved.  
Ordnance Survey Licence number EL273236.

Project No: LT122

Project: Elchies (Rothes III) Wind Farm  
Grid Connection

Title: Figure 7.9 - Groundwater Vulnerability

Drawn by: JO

Date: 27/02/2023

Drawing: 428.04707.00014.0009.3