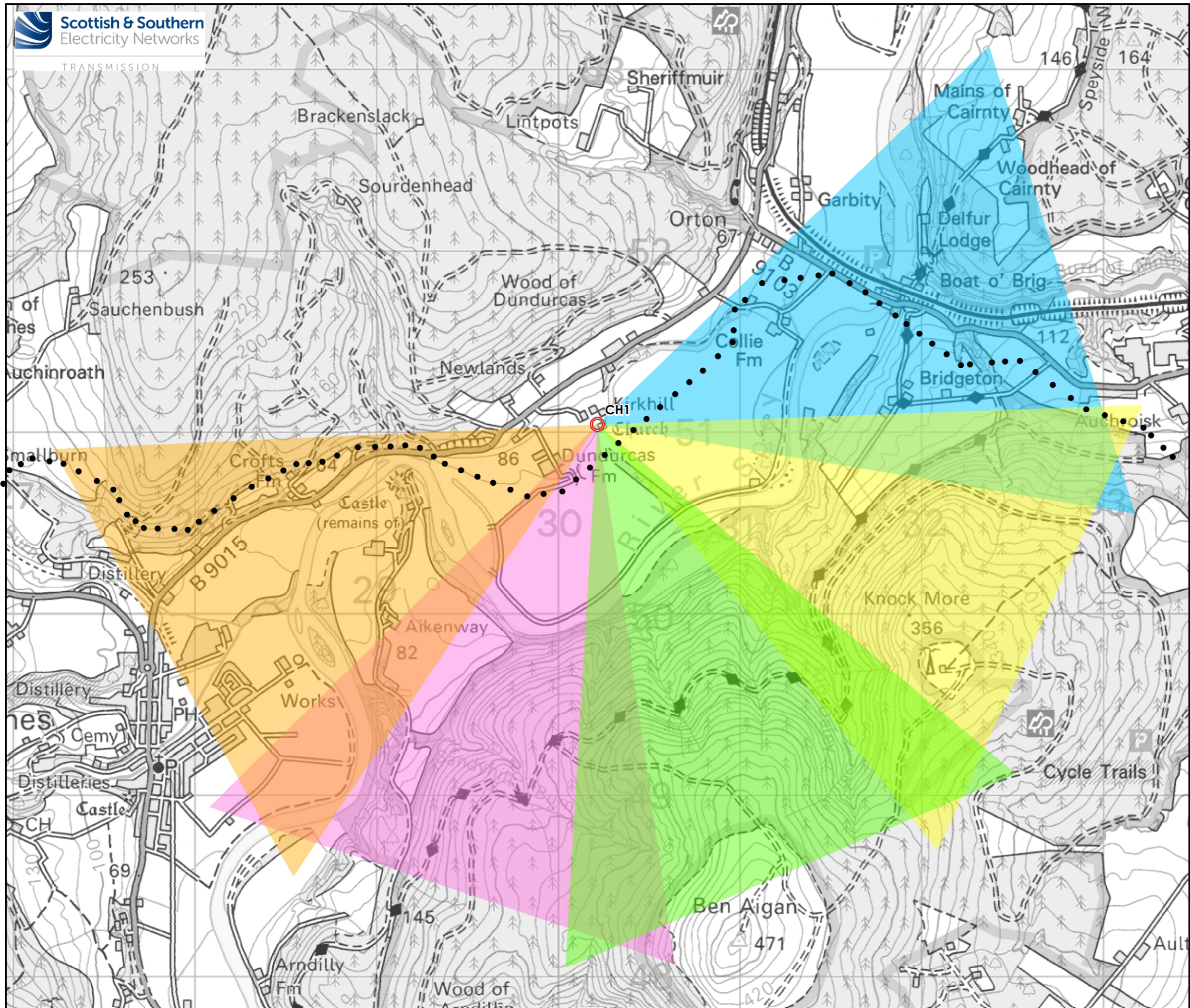
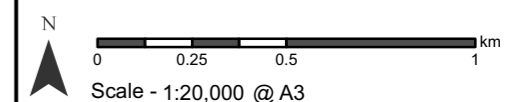


TRANSMISSION



**Legend**

- Pole location
- Visualisation Location**
- Visualisation Location
- Direction of View (53.5°)**
- View 1
- View 2
- View 3
- View 4
- View 5

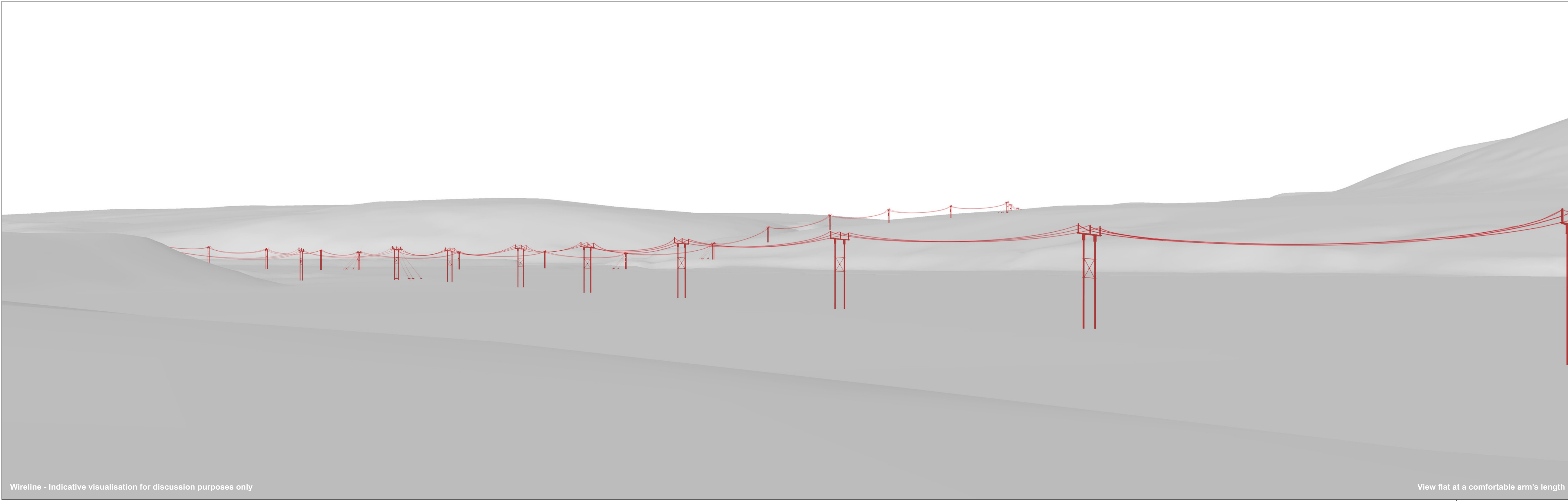


Reproduced by permission of Ordnance Survey on behalf of HMSO.  
Crown copyright and database right 2022 all rights reserved.  
Ordnance Survey Licence number EL273236.

Project No: LT122  
Project: Elchies (Rothes III) Wind Farm  
Grid Connection

Title: Figure 8.3a  
CH1 - Church of Dundurcas (SM 5621)

Drawing No. - 77800\_LS\_002a  
Date - 18/01/23



Wireline - Indicative visualisation for discussion purposes only

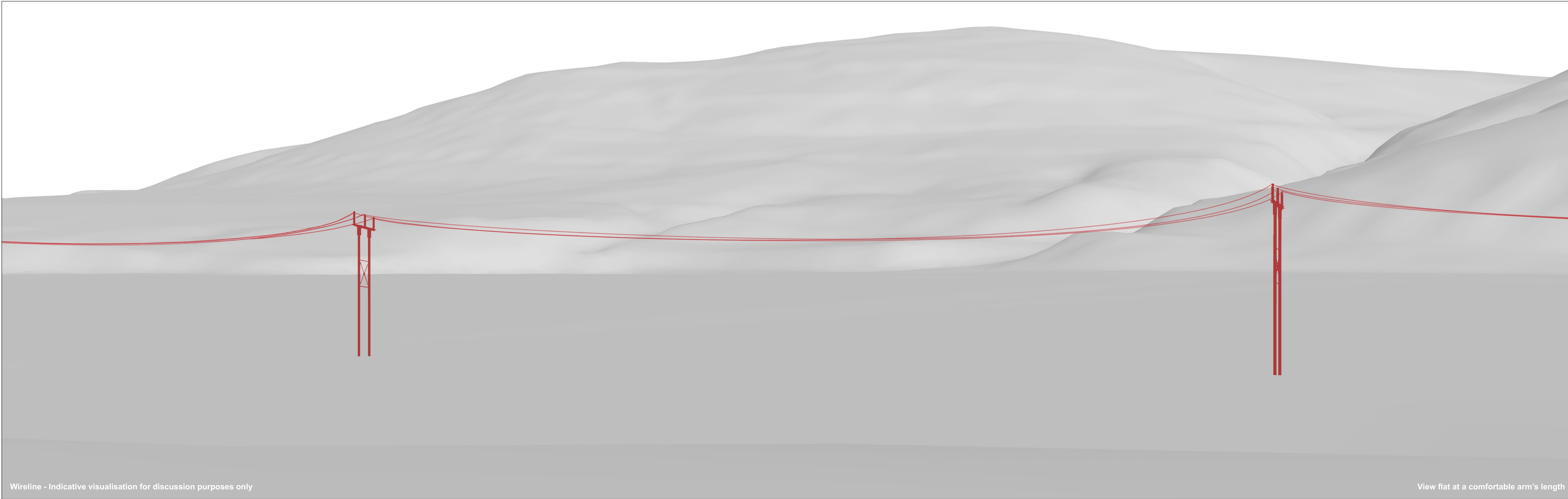
View flat at a comfortable arm's length

Elchies (Rothes III) Wind Farm Grid Connection  
 Figure 8.3b - CH1: Church of Dundurcas (SM 5621), Wireline: View 1

OS reference:	330216, 851042	Horizontal field of view:	53.5° (planar projection)
Ground level:	66m AOD	Principal distance:	812.5 mm
Direction of view:	72.65°	Paper size:	841 x 297 mm (half A1)
Nearest proposed pole:	0.15km	Correct printed image size:	820 x 260 mm

Drawing No. - 77800\_LS\_002b Date - 18/01/23





Wireline - Indicative visualisation for discussion purposes only

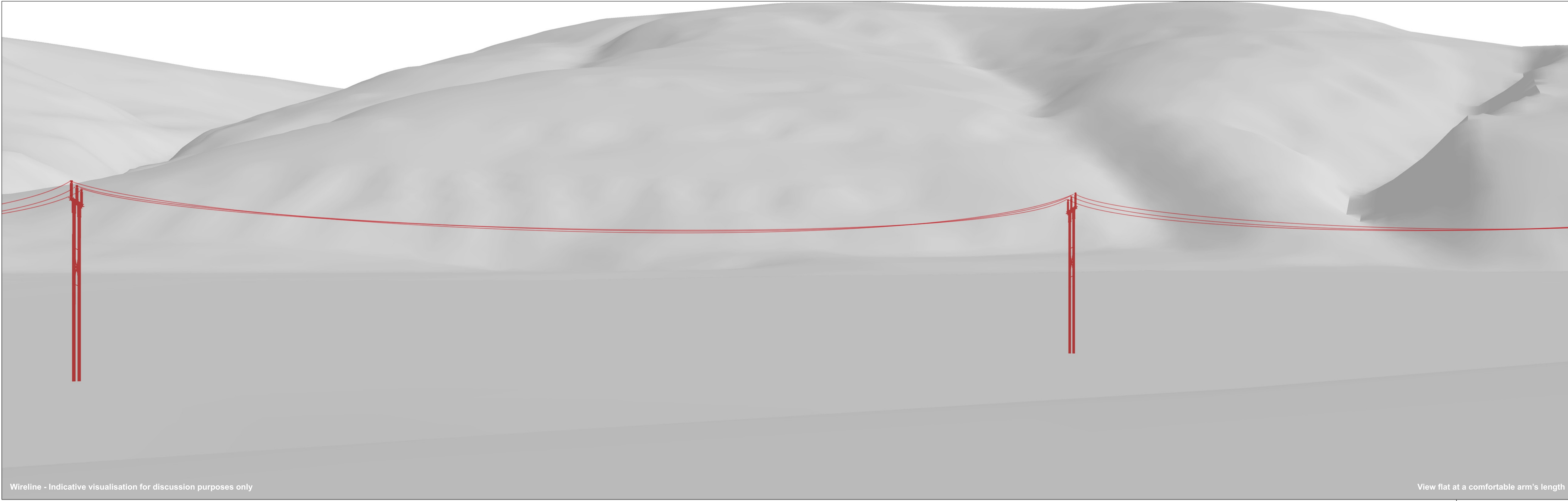
View flat at a comfortable arm's length

Elchies (Rothes III) Wind Farm Grid Connection  
 Figure 8.3c - CH1: Church of Dundurcas (SM 5621), Wireline: View 2

OS reference:	330216, 851042	Horizontal field of view:	53.5° (planar projection)
Ground level:	66m AOD	Principal distance:	812.5 mm
Direction of view:	114.65°	Paper size:	841 x 297 mm (half A1)
Nearest proposed pole:	0.15km	Correct printed image size:	820 x 260 mm

Drawing No. - 77800\_LS\_002c Date - 18/01/23





Wireline - Indicative visualisation for discussion purposes only

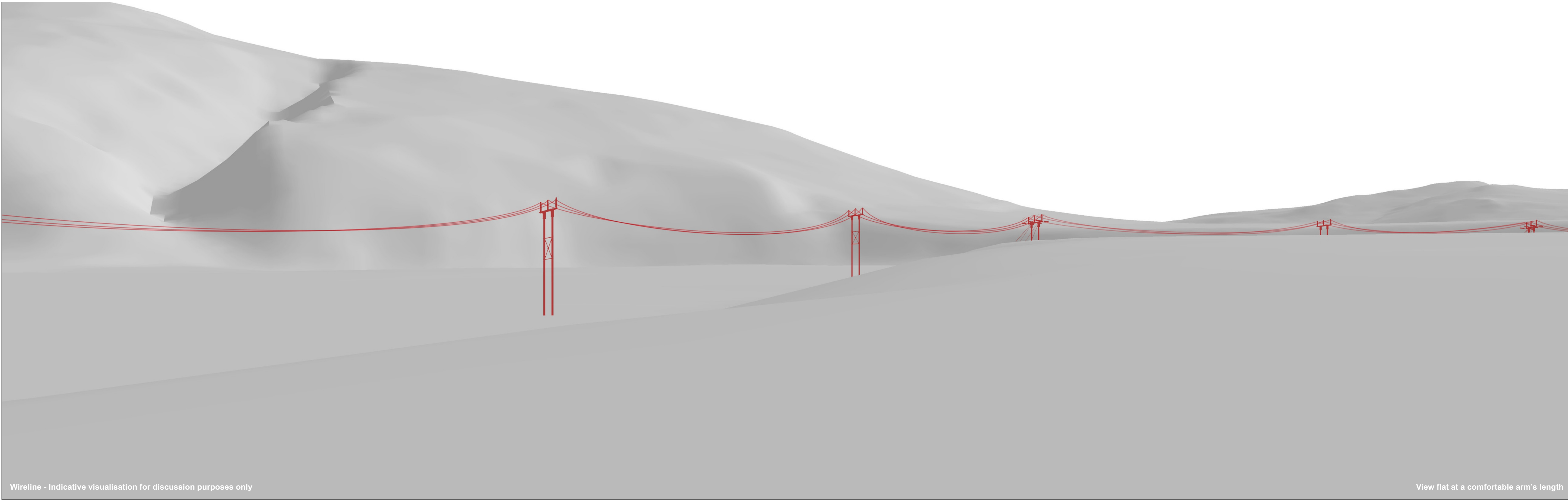
View flat at a comfortable arm's length

Elchies (Rothes III) Wind Farm Grid Connection  
 Figure 8.3d - CH1: Church of Dundurcas (SM 5621), Wireline: View 3

OS reference:	330216, 851042	Horizontal field of view:	53.5° (planar projection)
Ground level:	66m AOD	Principal distance:	812.5 mm
Direction of view:	156.65°	Paper size:	841 x 297 mm (half A1)
Nearest proposed pole:	0.15km	Correct printed image size:	820 x 260 mm

Drawing No. - 77800\_LS\_002d Date - 18/01/23





Wireline - Indicative visualisation for discussion purposes only

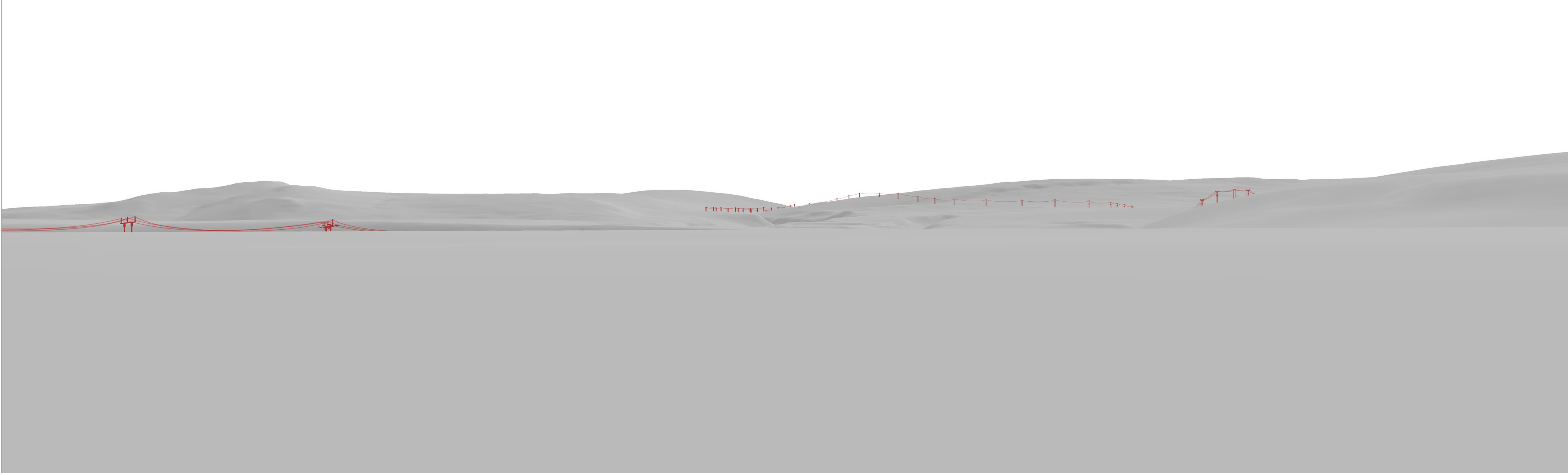
View flat at a comfortable arm's length

Elchies (Rothes III) Wind Farm Grid Connection  
 Figure 8.3e - CH1: Church of Dundurcas (SM 5621), Wireline: View 4

OS reference:	330216, 851042	Horizontal field of view:	53.5° (planar projection)
Ground level:	66m AOD	Principal distance:	812.5 mm
Direction of view:	198.65°	Paper size:	841 x 297 mm (half A1)
Nearest proposed pole:	0.15km	Correct printed image size:	820 x 260 mm

Drawing No. - 77800\_LS\_002e Date - 18/01/23





Wireline - Indicative visualisation for discussion purposes only

View flat at a comfortable arm's length

Elchies (Rothes III) Wind Farm Grid Connection  
Figure 8.3e - CH1: Church of Dundurcas (SM 5621), Wireline: View 5

OS reference:	330216, 851042	Horizontal field of view:	53.5° (planar projection)
Ground level:	66m AOD	Principal distance:	812.5 mm
Direction of view:	240.65°	Paper size:	841 x 297 mm (half A1)
Nearest proposed pole:	0.15km	Correct printed image size:	820 x 260 mm

Drawing No. - 77800\_LS\_002f Date - 18/01/23

