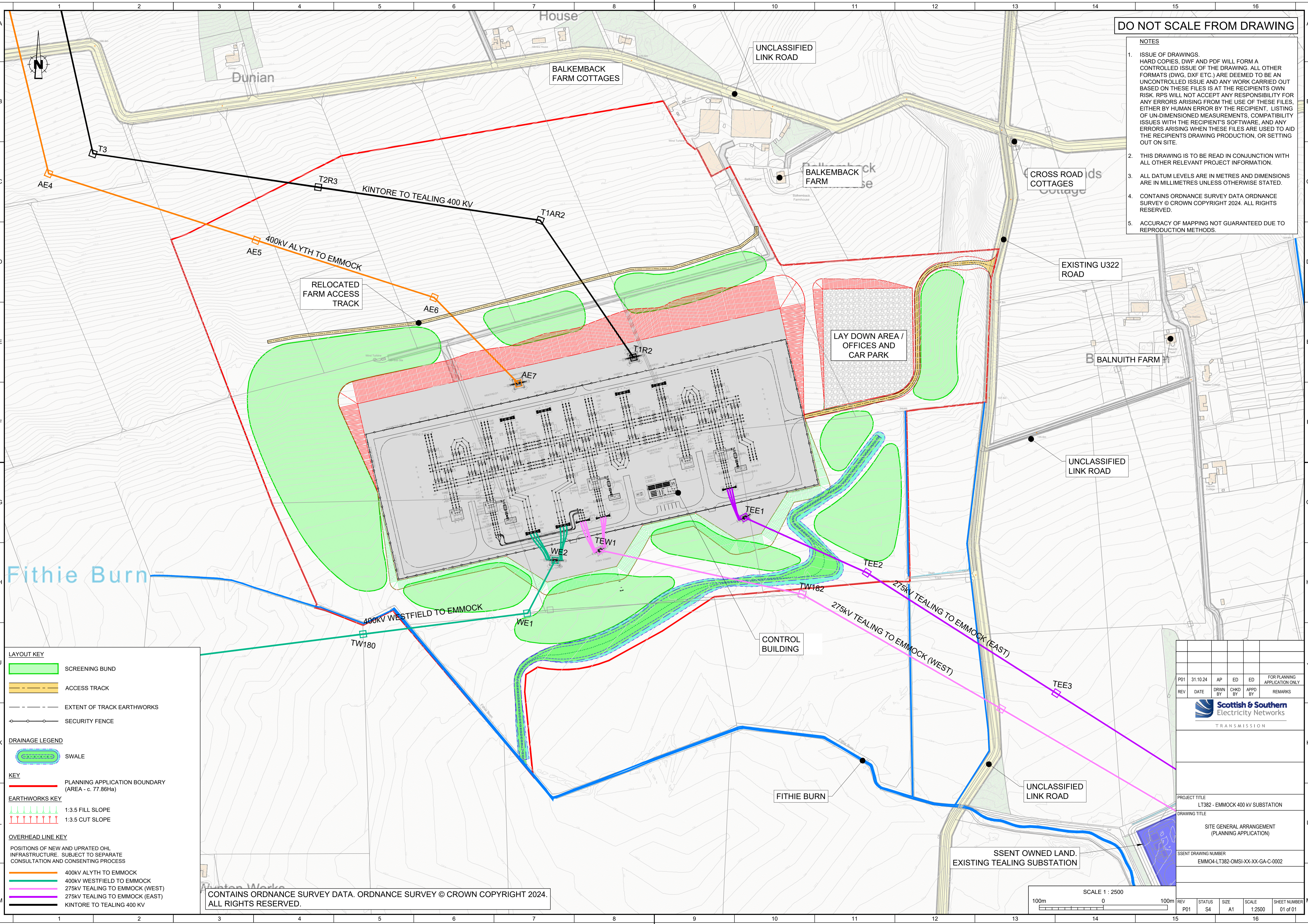


DO NOT SCALE FROM DRAWING

NOTES

1. ISSUE OF DRAWINGS. HARD COPIES, DWF AND PDF WILL FORM A CONTROLLED ISSUE OF THE DRAWING. ALL OTHER FORMATS (DWG, DXF ETC.) ARE DEEMED TO BE AN UNCONTROLLED ISSUE AND ANY WORK CARRIED OUT BASED ON THESE FILES IS AT THE RECIPIENT'S OWN RISK. RPS WILL NOT ACCEPT ANY RESPONSIBILITY FOR ANY ERRORS ARISING FROM THE USE OF THESE FILES, EITHER BY HUMAN ERROR BY THE RECIPIENT, LISTING OF UN-DIMENSIONED MEASUREMENTS, COMPATIBILITY ISSUES WITH THE RECIPIENT'S SOFTWARE, AND ANY ERRORS ARISING WHEN THESE FILES ARE USED TO AID THE RECIPIENT'S DRAWING PRODUCTION, OR SETTING OUT ON SITE.
2. THIS DRAWING IS TO BE READ IN CONJUNCTION WITH ALL OTHER RELEVANT PROJECT INFORMATION.
3. ALL DATUM LEVELS ARE IN METRES AND DIMENSIONS ARE IN MILLIMETRES UNLESS OTHERWISE STATED.
4. CONTAINS ORDNANCE SURVEY DATA ORDNANCE SURVEY © CROWN COPYRIGHT 2024. ALL RIGHTS RESERVED.
5. ACCURACY OF MAPPING NOT GUARANTEED DUE TO REPRODUCTION METHODS.



LAYOUT KEY

- SCREENING BUND
- ACCESS TRACK
- EXTENT OF TRACK EARTHWORKS
- SECURITY FENCE

DRAINAGE LEGEND

- SWALE

KEY

- PLANNING APPLICATION BOUNDARY (AREA - c. 77.86Ha)

EARTHWORKS KEY

- 1:3.5 FILL SLOPE
- 1:3.5 CUT SLOPE

OVERHEAD LINE KEY

POSITIONS OF NEW AND UPGRATED OHL INFRASTRUCTURE. SUBJECT TO SEPARATE CONSULTATION AND CONSENTING PROCESS

- 400KV ALYTH TO EMMOCK
- 400KV WESTFIELD TO EMMOCK
- 275KV TEALING TO EMMOCK (WEST)
- 275KV TEALING TO EMMOCK (EAST)
- KINTORE TO TEALING 400 KV

CONTAINS ORDNANCE SURVEY DATA. ORDNANCE SURVEY © CROWN COPYRIGHT 2024. ALL RIGHTS RESERVED.

REV	DATE	DRWN BY	CHKD BY	APPD BY	REMARKS
P01	31.10.24	AP	ED	ED	FOR PLANNING APPLICATION ONLY

Scottish & Southern Electricity Networks
TRANSMISSION

PROJECT TITLE
LT382 - EMMOCK 400 KV SUBSTATION

DRAWING TITLE
SITE GENERAL ARRANGEMENT (PLANNING APPLICATION)

SSENT DRAWING NUMBER
EMMOCK-LT382-OMSI-XX-XX-GA-C-0002

REV	STATUS	SIZE	SCALE	SHEET NUMBER
P01	S4	A1	1:2500	01 of 01

