

Legend

Site Option

- 1
- 2
- 3
- 4

5km Area of Search

Core Paths

Special Areas of Conservation

Site of Special Scientific Interest

Native Woodland Survey of Scotland

Scheduled Monuments

Listed Building Category

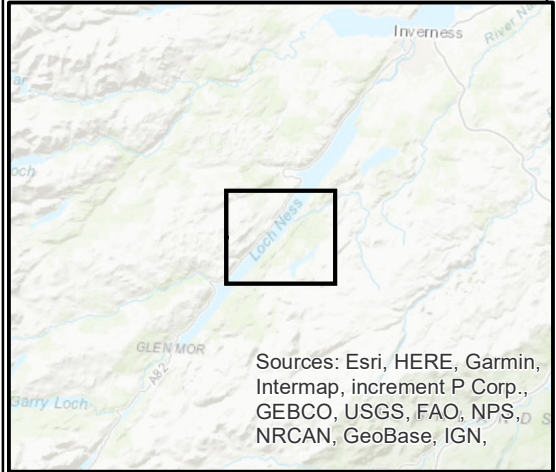
- A
- B
- C

Peat Class

- 1
- 2

Ancient Woodland Inventory

- Ancient (of semi-natural origin)
- Long-Established (of plantation origin)
- Other (on Roy map)

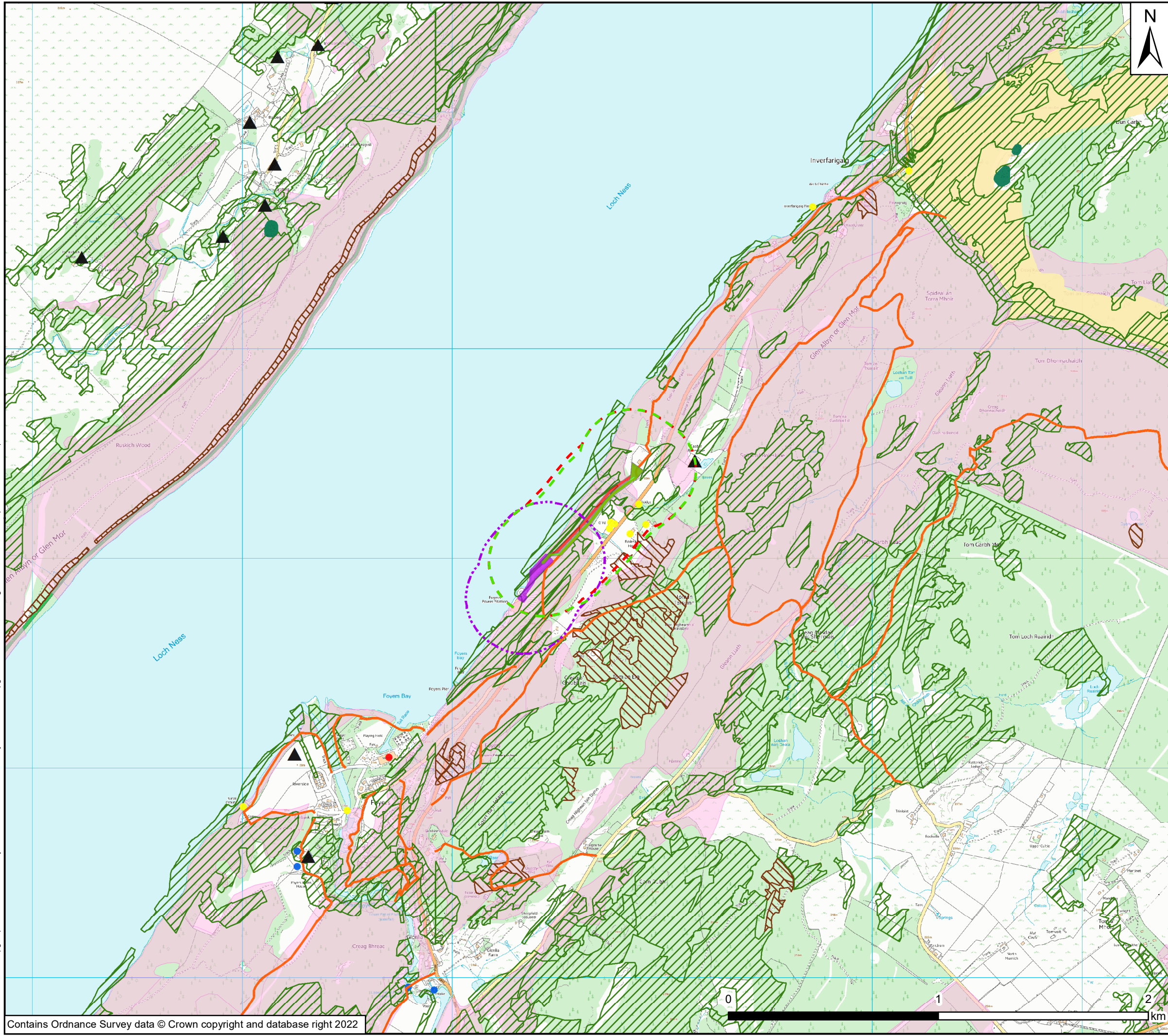


© Crown Copyright 2022. All rights reserved.
Ordnance Survey Licence 0100031673.



Figure 3.1: Initial Substation Site Selection Screening

Drg No	FOYERS_WSP_DA_1
Rev	A
Date	22/04/2022
Scale	1:40,000 @ A3



Key

- Cable Option 1A
- Cable Option 1B
- - - Substation Option 1
- - - Cable Option 1A 250m Buffer
- - - Cable Option 1B 250m Buffer
- - - Substation Option 1 250m Buffer
- Core Paths
- ▲ Private Water Supplies

Listed Buildings Category

- A
- B
- C
- Native woodland
- Nearly-native woodland
- Ancient Woodland
- Special Areas of Conservation (SAC)
- Scheduled Monuments

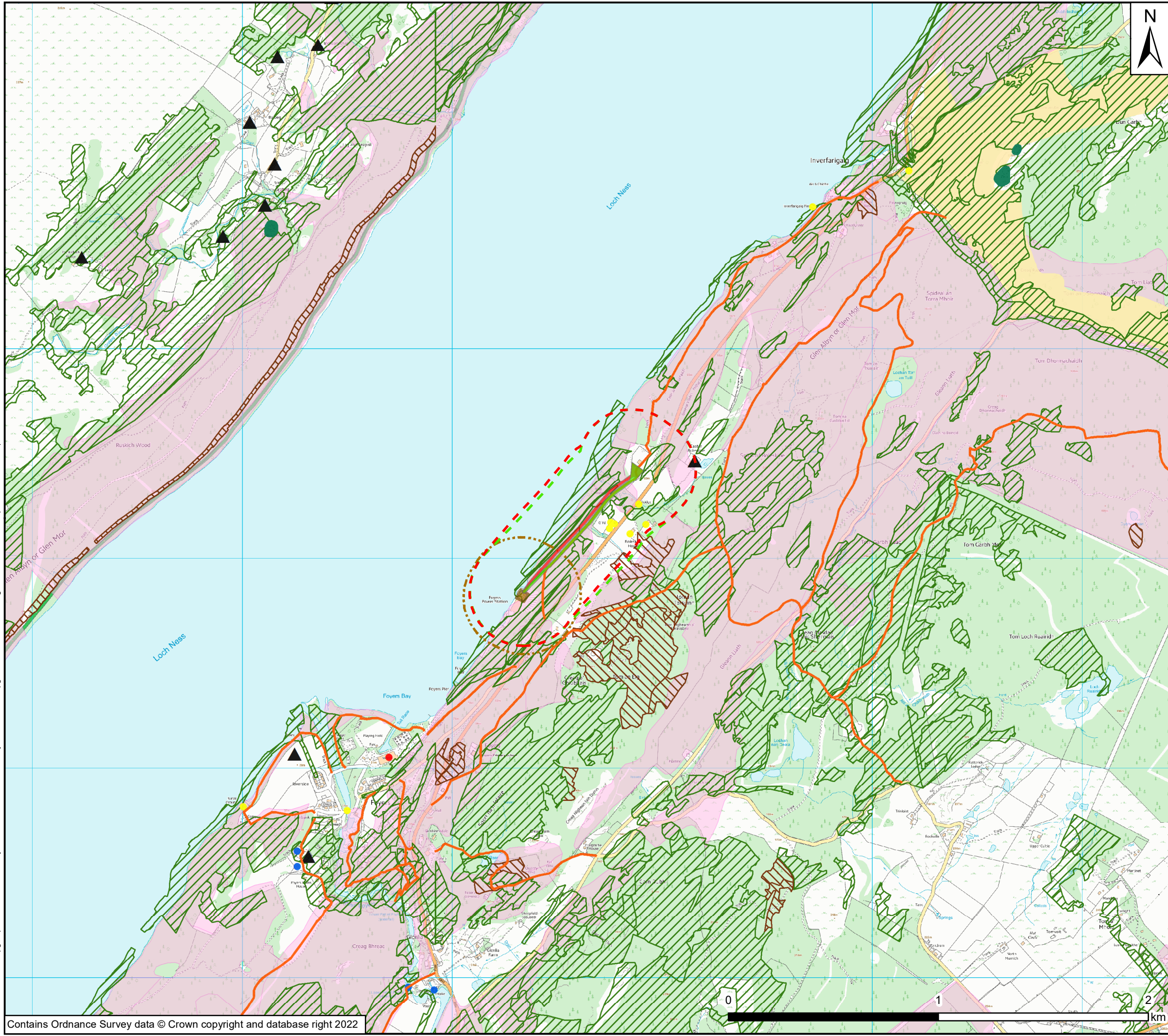
Note: Loch Ness and Duntechaig Special Landscape Area covers the entire area shown on this figure.



Project: **SSE Foyers Substation**

Title: **Figure 5.1 – Substation Option 1 with UGC Options 1A and 1B with Environmental Constraints**

Drawing No: 70091628-006	Drawn: MAL
Date: 9/22/2022	Checked: LW
Scale: 17,500 @ A3	Approved: LW



Key

- █ Cable Option 2A
- █ Cable Option 2B
- █ Substation Option 2
- Cable Option 2A 250m Buffer
- Cable Option 2B 250m Buffer
- Substation Option 2 250m Buffer
- Core Paths
- ▲ Private Water Supplies

Listed Buildings Category

- A
- B
- C
- Native woodland
- Nearly-native woodland
- Ancient Woodland
- Special Areas of Conservation (SAC)
- Scheduled Monuments

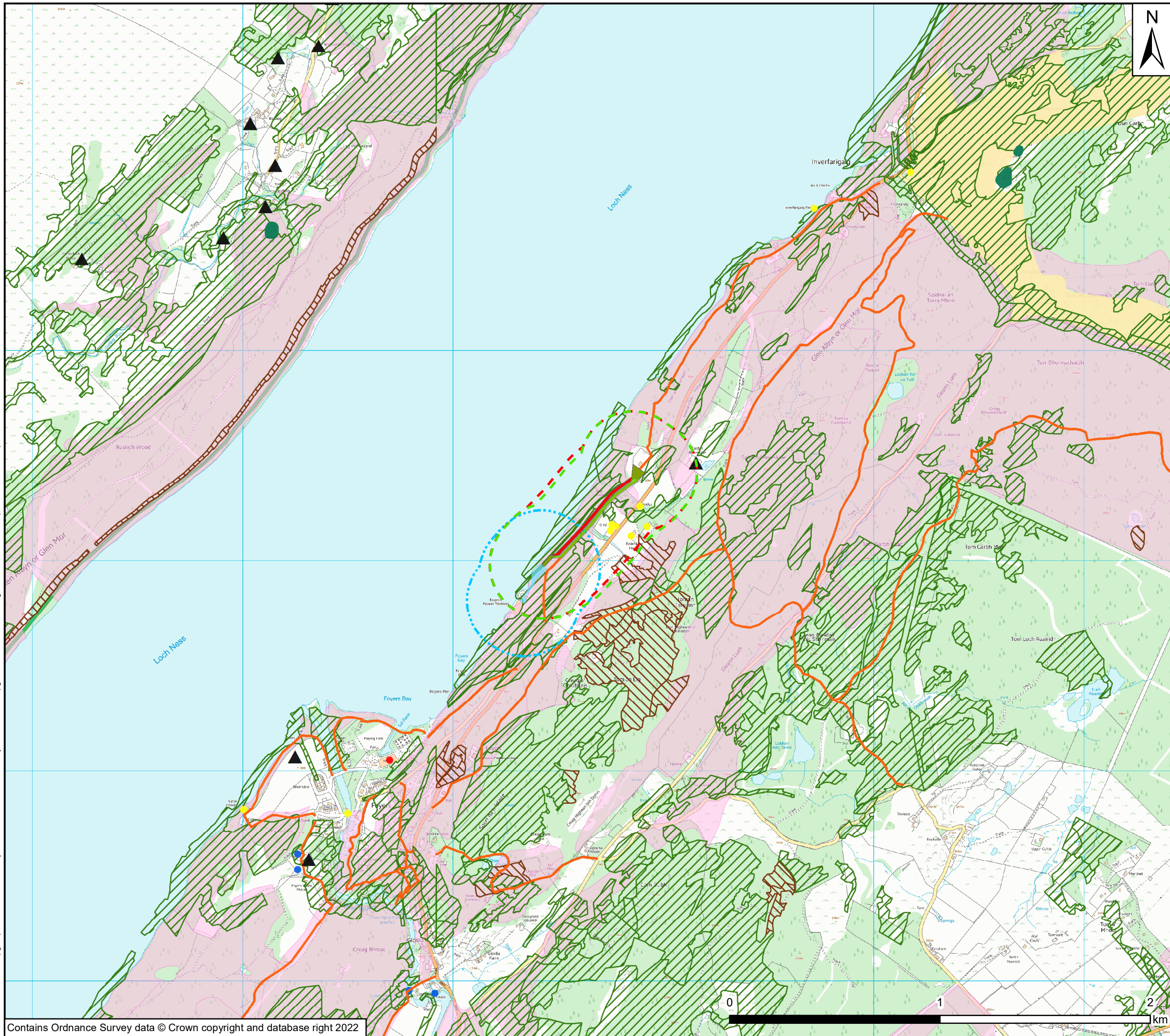
Note: Loch Ness and Duntechaig Special Landscape Area covers the entire area shown on this figure.



Project: **SSE Foyers Substation**

Title: **Figure 5.2 – Substation Option 2 with UGC Options 2A and 2B with Environmental Constraints**

Drawing No: 70091628-007	Drawn: MAL
Date: 9/22/2022	Checked: LW
Scale: 17,500 @ A3	Approved: LW



Key

- Cable Option 1A
- Cable Option 1B
- Substation Option 3
- Cable Option 1A 250m Buffer
- Cable Option 1B 250m Buffer
- Substation Option 3 250m Buffer
- ▲ Private Water Supplies
- Core Paths

Listed Buildings Category

- A
- B
- C
- Native woodland
- Nearly-native woodland
- Ancient Woodland
- Special Areas of Conservation (SAC)
- Scheduled Monuments

Note: Loch Ness and Duntechaig Special Landscape Area covers the entire area shown on this figure.

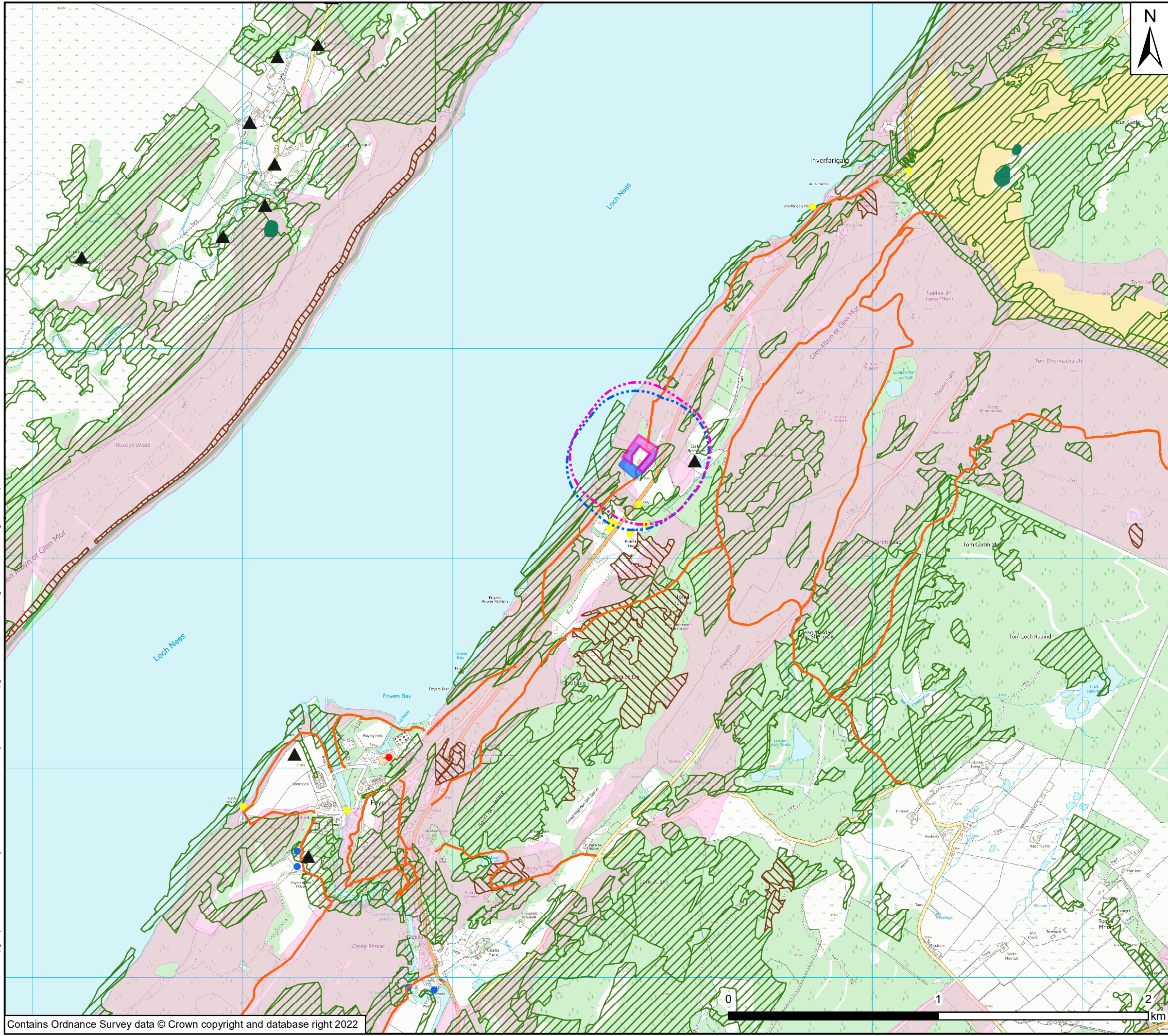


TRANSMISSION

Project: **SSE Foyers Substation**

Title: **Figure 5.3 – Substation Option 3 with UGC Options 1A and 1B with Environmental Constraints**

Drawing No: 70091628-008	Drawn: MAL
Date: 9/22/2022	Checked: LW
Scale: 17,500 @ A3	Approved: LW



Key

- Switching Station Option A
- Switching Station Option B
- Switching Station Option A 250m Buffer
- Switching Station Option B 250m Buffer
- Private Water Supplies
- Core Paths

Listed Buildings Category

- A
- B
- C
- Native woodland
- Nearly-native woodland
- Ancient Woodland
- Special Areas of Conservation (SAC)
- Scheduled Monuments

Note: Loch Ness and Duntechaig Special Landscape Area covers the entire area shown on this figure.

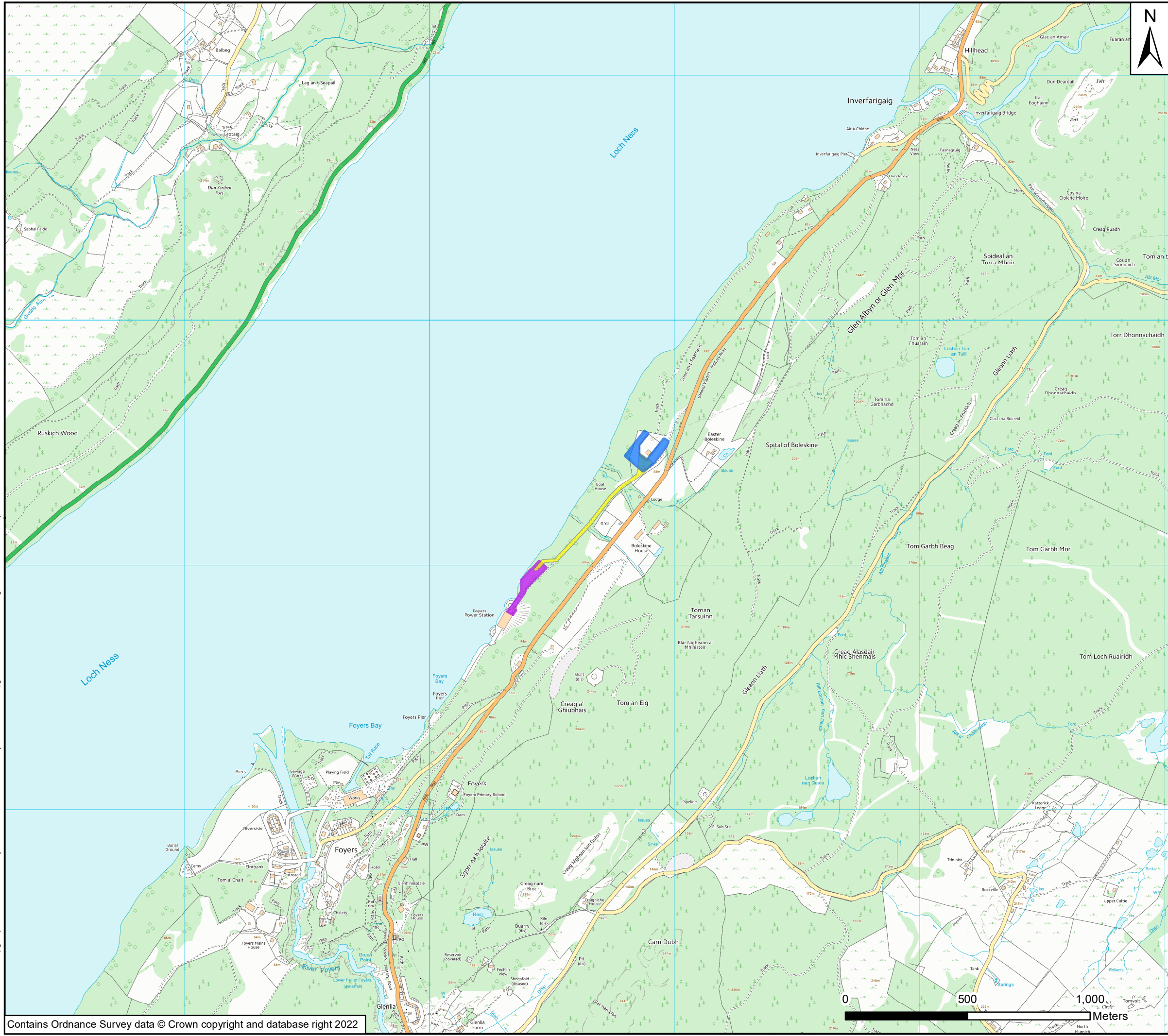


Project: **SSE Foyers Substation**

Title: **Figure 5.4 – Switching Station Options with Environmental Constraints**

Drawing No: 70091628-005	Drawn: MAL
Date: 9/22/2022	Checked: LW
Scale: 17,500 @ A3	Approved: LW





- Key**
- Switching Station Option A
 - Substation Option 1
 - Underground Cable Option 1B



Project:	SSE Foyers Substation
Title:	Figure 6.1 – Preferred Options
Drawing No:	70091628-011
Date:	9/28/2022
Scale:	15,000 @ A3
Drawn:	MAL
Checked:	LW
Approved:	LW

