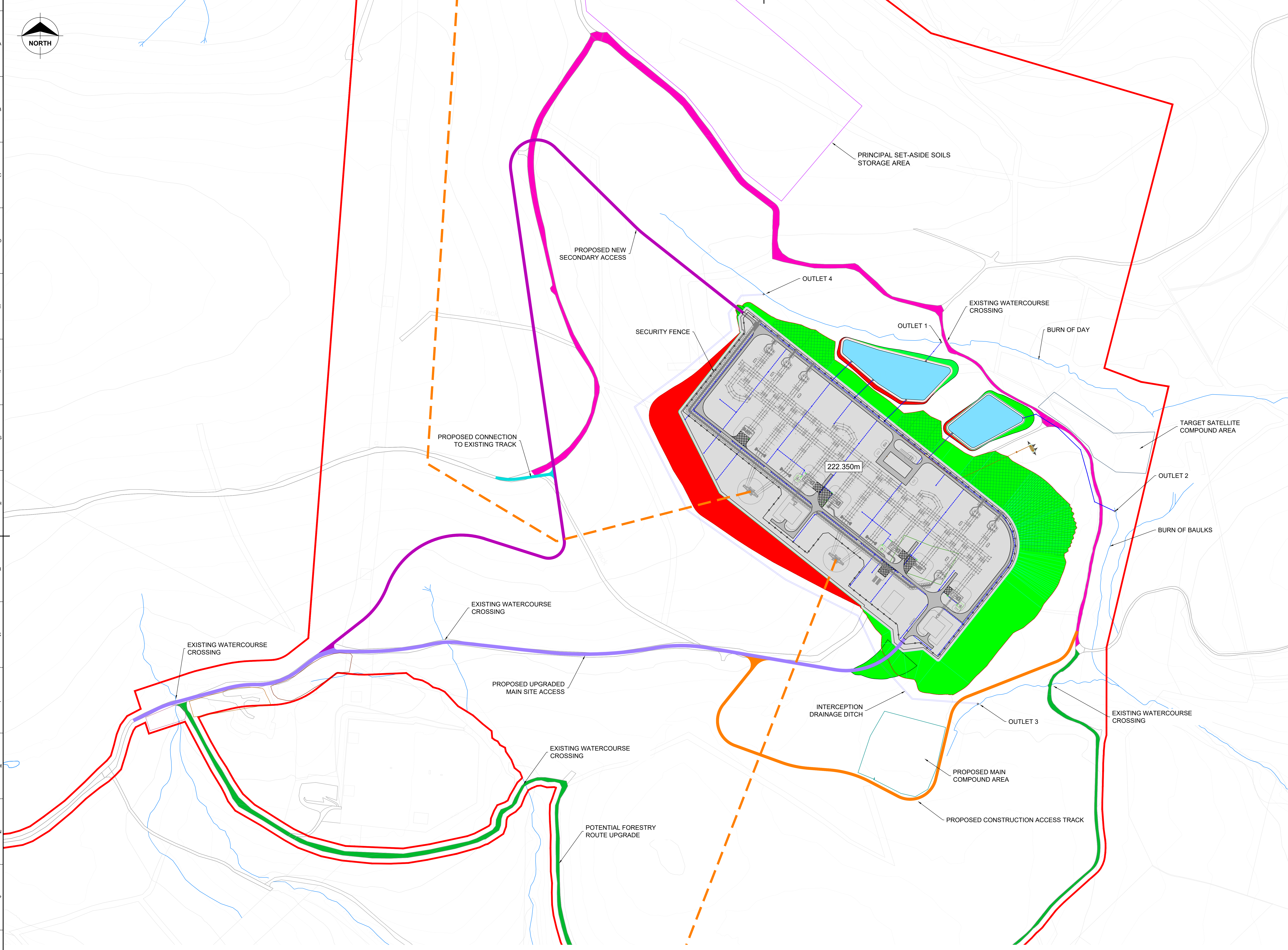


- NOTES:**
1. THIS DRAWING IS FOR PLANNING PURPOSES ONLY SUBJECT TO DETAILED DESIGN
  2. DO NOT SCALE FROM THIS DRAWING. USE ONLY SPECIFIED DIMENSIONS
  3. ALL DIMENSIONS ARE IN METRES UNLESS NOTED OTHERWISE.
  4. ALL LEVELS ARE IN METRES TO ORDNANCE DATUM UNLESS NOTED OTHERWISE
  5. INTERCEPTION DITCHES SHALL NOT DISCHARGE DIRECTLY TO WATERCOURSES UNTIL VEGETATION HAS BEEN ESTABLISHED AND WATER QUALITY IS SATISFACTORY. APPROPRIATE SEDIMENT CONTROL MEASURES SHALL BE IMPLEMENTED DURING CONSTRUCTION STAGE ENVISAGED TO BE CHECK DAMS AND SETTLEMENT LAGOONS AS NECESSARY
  6. APPROPRIATE CHANNEL PROFILES TO BE ADOPTED FOR GRADIENT FLOW TO CONTROL EROSION RISK SCOUR PROTECTION TO BE PROVIDED AT ALL OUTFALLS.

- REFERENCE DRAWINGS:**
- 162507-BMD-ZZ-HR-DSP-TP-0001 PLANNING APPLICATION BOUNDARY & SITE ACCESS PLAN
  - 162507-BMD-CE-HR-DSE-TP-0001 PLATFORM EARTHWORKS LAYOUT
  - 162507-BMD-CE-HR-DPL-TP-0001 PLATFORM DRAINAGE LAYOUT
  - 162507-BMD-CE-HR-DPL-TP-0002 SITE ACCESS ROADS LAYOUT

- LEGEND:**
- PLANNING APPLICATION BOUNDARY
  - PROPOSED UPGRADED MAIN SITE ACCESS
  - PROPOSED NEW SECONDARY ACCESS
  - PROPOSED CONSTRUCTION ACCESS TRACK
  - PROPOSED CONNECTION TO EXISTING TRACK
  - POTENTIAL FORESTRY ROUTE UPGRADE
  - EXISTING CATEGORY A FORESTRY TRACK
  - CUT
  - LEVEL PLATFORM (222.350m)
  - FILL (1:3 SLOPE)
  - FILL (1:5 SLOPE)
  - - - - - INDICATIVE OVERHEAD LINE
  - PROPOSED SUBSTATION ROADS
  - PROPOSED SURFACE WATER DRAINAGE
  - PROPOSED SURFACE WATER PERFORATED PIPE
  - FOUL DRAINAGE NETWORK
  - SUDS BASIN AREA
  - EXISTING WATERCOURSE
  - PROPOSED SEPTIC TANK
  - PROPOSED HEADWALL (HW)



<b>Drawing Status:</b>			
<b>FOR PLANNING</b>			
Software:	Status Code:	Scale:	Paper Size:
AUTOCAD	Not Used	1:2500	A0
Drawn By:	Checked By:	Approved By:	Date:
EW	JF	RC	27/SEP/24

**Contractor:**

**BURNS & McDONNELL**

Burns & McDonnell Europe (UK) Limited, trading as Burns & McDonnell  
2 Parklands Way, Marn Park, Marnham, ML1 4PP, UK  
Email: [enrol@burns-mcd.com](mailto:enrol@burns-mcd.com) Website: [www.burnsmcd.com](http://www.burnsmcd.com)

<b>Client:</b>	<b>Supplier / Subcontractor:</b>

**Drawing Title:**

Figure 3.1: Site General Arrangement

**Project Name:**

HURLIE 400kV SUBSTATION

**Site Name:**

HURLIE 400kV SUBSTATION

**Contractor Drawing No.:**

162507-BMD-CE-HR-DGA-TP-0001

**Client Drawing No.:**

162507-BMD-CE-HR-DGA-TP-0001

**Supplier / Subcontractor Drawing No.:**

-

**Sheet:** 01

**Next:** -

**Issue / Revision:** P02

<b>Issue / Revision:</b>	P01	<b>Drawn By:</b>	EW	<b>Issue / Revision:</b>	P02	<b>Drawn By:</b>	EW
<b>Investment No.:</b>		<b>Checked By:</b>	JF	<b>Investment No.:</b>		<b>Checked By:</b>	JF
<b>Date:</b>	27/SEP/24	<b>Approved By:</b>	RC	<b>Date:</b>	12/NOV/24	<b>Approved By:</b>	RC

**Description / Remarks**

ISSUED FOR PLANNING

**Description / Remarks**

ISSUED FOR PLANNING