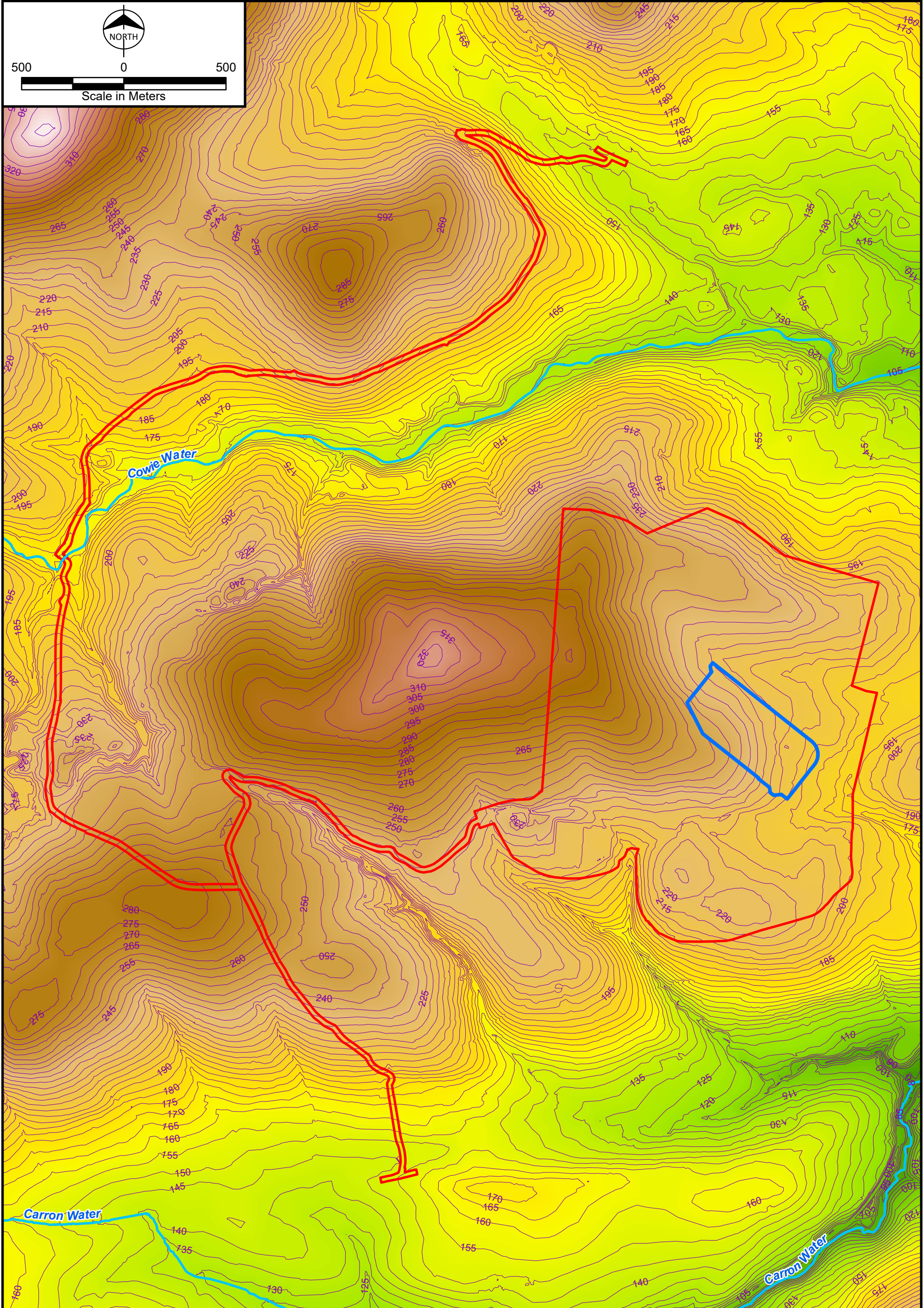


Scale in Meters



- Planning Application Boundary
  - Substation Platform
  - River
  - 5m Contour
- Elevation (meters)
- 375
  - 45



162507-BMD-XX-HR-GIS-TP-0001  
Revision: P02  
Hurrie – Existing Topographical Survey Plan  
Scottish and Southern Electricity Networks  
Burns & McDonnell Engineering Company  
Drawn by: SN Approved by: JF  
11 November 2024