

Kinardochy Newsletter

August 2024

The project has a dedicated website, please scan the QR code to be taken to the project website or use the following URL:
ssen-transmission.co.uk/kinardochy

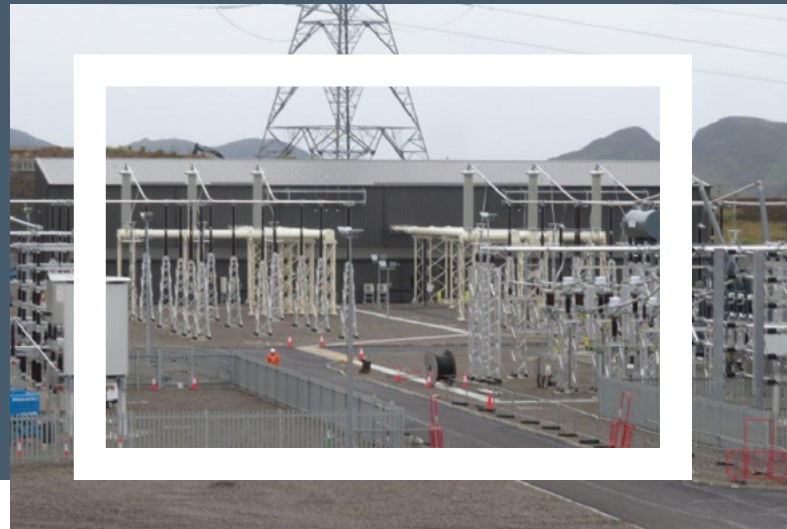


Construction works continue to progress on SSEN Transmission's Kinardochy substation project which will see the construction of a new 275/400kV electrical substation three kilometres south from Tummel Bridge.

The equipment being installed will play a critical role in ensuring voltage limits on the transmission network remain stable and power flows can be efficiently managed allowing for the connection of new renewable generation to the grid. Safety is always our first priority at SSEN Transmission and with this in mind, we ask that you please remain vigilant of signage or direction around the construction works.

Works carried out to date

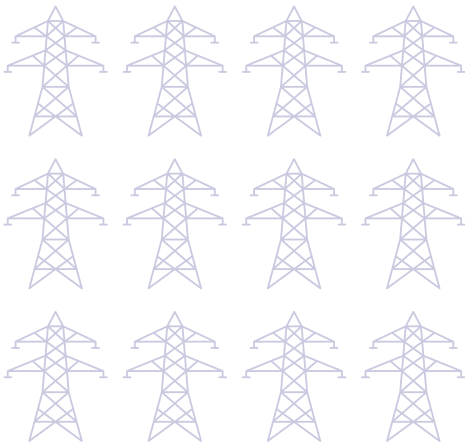
- Overhead lines have been successfully switched to permanent structures, with temporary towers removed and reinstatement is underway.
- The final layer of stone chippings are down, and the pathway around the substation platform nears completion.
- The Gas Insulated Switchgear (GIS) and Busbars (GIB) are in place, tested, and commissioned, including high voltage testing.
- Indoor and outdoor equipment for the substation's reactive compensation system is installed, with testing underway.



- All control and protection cabling is complete and tested.
- Great progress has been made on overall testing and commissioning activities for the substation equipment. Additionally, a control room communication link has been established to enable remote monitoring of the substation.

Works in the next quarter

- Overhead line connection to the substation will be performed under upcoming outages.
- Electrical testing and commissioning of all substation electrical plant and equipment will be completed ahead of outages for connecting the substation to the network and final energisation.
- Landscaping, tree and shrub planting and reinstatement out with the substation boundary scheduled to commence.



If you have any questions, please do not hesitate to contact your Community Liaison Manager:

Louise Anderson
Lead Community Liaison Manager
SSEN Transmission, 200 Dunkeld Road, Perth, PH1 3GH

Tel: 01738 341 975

Mobile: +44 (0) 7384 454 233

Email: louise.anderson@sse.com



[ssen-transmission.co.uk](https://www.ssen-transmission.co.uk)



SSEN Transmission



SSEN-Transmission



SSETransmission