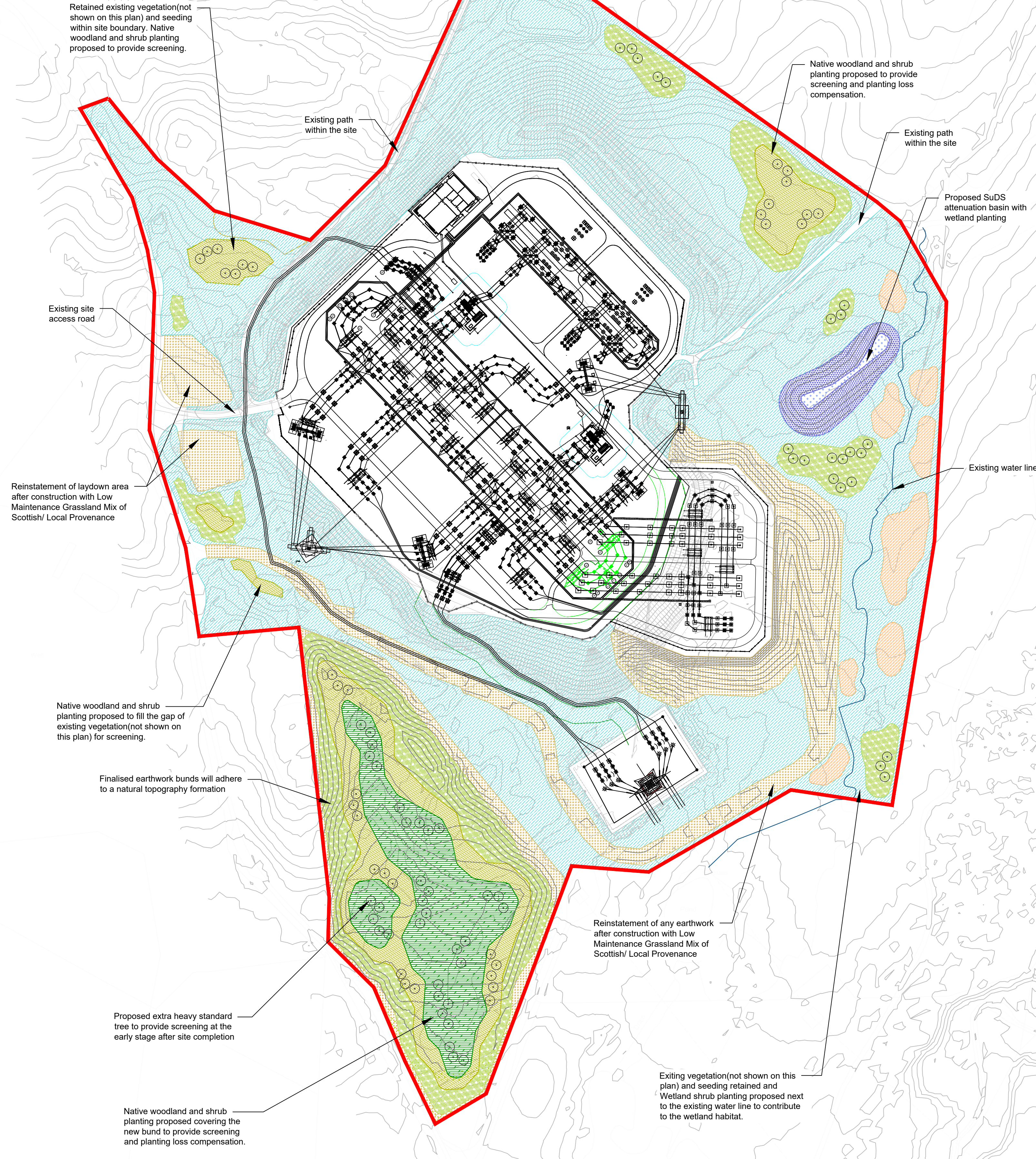


SCALE 1:1500
 10 0 20 40 60 80 100m



Plant schedule

All plants proposed as part of the Scheme shall comply with the National Plant Specification (NPS) and are to be of local provenance. Species have been selected to be in-keeping with the local landscape character, to complement existing vegetation and to enhance biodiversity.

Specimen Trees

Abbrev.	Botanical Name	Common Name	Girth/Dia. cm	Height cm	Root Zone	Specification	Mix %
A gl	<i>Alnus glutinosa</i>	Common Alder	14-16	400-450	RB	3x EHS, clear stem min. 200cm; 5 brks	15.00
B pub	<i>Betula pubescens</i>	Downy Birch	14-16	400-450	RB	3x EHS, clear stem 175-200cm; 5 brks	15.00
C mon	<i>Crataegus monogyna</i>	Common Hawthorn	14-16	400-450	RB	3x EHS, clear stem 175-200cm; 5 brks	15.00
P tre	<i>Populus tremula</i>	Aspen	14-16	425-600	RB	3x EHS, clear stem 175-200cm; 5 brks	15.00
P pad	<i>Prunus padus</i>	Bird Cherry	14-16	400-450	RB	3x EHS, clear stem 175-200cm; 5 brks	20.00
S auc	<i>Sorbus aucuparia</i>	Rowan	14-16	400-450	RB	3x EHS, clear stem 175-200cm; 5 brks	20.00

Native Woodland Mix

Abbrev.	Botanical Name	Common Name	Girth/Dia. cm	Height cm	Root Zone	Specification	Mix %
A gl	<i>Alnus glutinosa</i>	Common Alder	-	60-80	B	1+1; Transplant - seed raised	15.00
B pub	<i>Betula pubescens</i>	Downy Birch	-	60-80	B	1+1; Transplant - seed raised	10.00
C av	<i>Corylus avellana</i>	Common Hazel	-	60-80	B	1+2; Transplant - seed raised, branched; 3 brks	15.00
C mon	<i>Crataegus monogyna</i>	Common Hawthorn	-	60-80	B	1+1; Transplant - seed raised	10.00
P sy	<i>Pinus sylvestris</i>	Scots Pine	-	40-60	2L	Leader with laterals	10.00
P tre	<i>Populus tremula</i>	Aspen	-	60-80	B	1+1; Transplant - seed raised	10.00
P av	<i>Prunus avium</i>	Wild Cherry	-	80-100	B	1+1; Transplant - seed raised	10.00
Q pe	<i>Quercus petraea</i>	Sessile Oak	-	100-125	B	1+2; Transplant - seed raised	10.00
S auc	<i>Sorbus aucuparia</i>	Rowan	-	60-80	B	1+1; Transplant - seed raised	10.00

Woodland Edge Mix

Abbrev.	Botanical Name	Common Name	Girth/Dia. cm	Height cm	Root Zone	Specification	Mix %
C mon	<i>Crataegus monogyna</i>	Common Hawthorn	-	100-125	B	1+2; Transplant - seed raised	15.00
J co	<i>Juniperus communis</i>	Common Juniper	-	30-40	2L	Leader with laterals	10.00
P av	<i>Prunus avium</i>	Wild Cherry	-	60-80	2L	1+1; Transplant - seed raised	15.00
R ar	<i>Rosa arvensis</i>	Field Rose	-	60-80	B	1+1; Transplant - seed raised, branched; 2 brks	15.00
S ci	<i>Salix cinerea</i>	Grey Willow	-	80-100	B	0/1; Cutting, branched; 2 brks	10.00
S auc	<i>Sorbus aucuparia</i>	Rowan	-	100-125	B	1+2; Feathered	10.00
U g	<i>Ulmus glabra</i>	Wych Elm	-	80-100	B	1+1; Transplant - seed raised	10.00
V op	<i>Viburnum opulus</i>	Guelder Rose	-	100-125	B	1+2; Transplant - seed raised, branched; 3 brks	15.00

Native Shrub Mix

Abbrev.	Botanical Name	Common Name	Girth/Dia. cm	Height cm	Root Zone	Specification	Mix %
C av	<i>Corylus avellana</i>	Common Hazel	-	80-100	B	1+2; Transplant - seed raised, branched; 4 brks	20.00
S c	<i>Salix caprea</i>	Goat Willow	-	80-100	B	0/1; Cutting, branched; 2 brks	15.00
S ci	<i>Salix cinerea</i>	Grey Willow	-	100-125	B	0/2; Cutting, branched; 3 brks	20.00
S ni	<i>Sambucus nigra</i>	Common Elder	-	60-80	B	1+1; Transplant - seed raised, branched; 3 brks	10.00
U e	<i>Ulex europaeis</i>	Common Gorse	-	30-40	3L	Bushy; 5 brks	20.00
V op	<i>Viburnum opulus</i>	Guelder Rose	-	100-125	B	1+2; Transplant - seed raised, branched; 3 brks	15.00

Wetland Shrub Mix

Abbrev.	Botanical Name	Common Name	Girth/Dia. cm	Height cm	Root Zone	Specification	Mix %
A gl	<i>Alnus glutinosa</i>	Common Alder	-	40-60	2L	1+1; Transplant - seed raised	20.00
B pub	<i>Betula pubescens</i>	Downy Birch	-	60-80	B	1+1; Transplant - seed raised	15.00
C av	<i>Corylus avellana</i>	Common Hazel	-	60-80	B	1+1; Transplant - seed raised, branched; 3 brks	15.00
Q pe	<i>Quercus petraea</i>	Sessile Oak	RC6	40-60	150cc min.	1+2; Seeding; call grown	10.00
SAL ALR	<i>Salix aurita</i>	Emerald Willow	-	60-80	B	Bushy; 7 brks	15.00
S ci	<i>Salix cinerea</i>	Grey Willow	-	100-125	B	0/2; Cutting, branched; 3 brks	10.00
S auc	<i>Sorbus aucuparia</i>	Rowan	-	80-100	B	1+1; Transplant - seed raised	15.00

Native Hedgerow Mix

Abbrev.	Botanical Name	Common Name	Girth/Dia. cm	Height cm	Root Zone	Specification	Mix %
C av	<i>Corylus avellana</i>	Common Hazel	-	60-80	B	1+2; Transplant - seed raised, branched; 3 brks	20.00
C mon	<i>Crataegus monogyna</i>	Common Hawthorn	-	40-60	B	1+0; Seeding	20.00
P sp	<i>Prunus spinosa</i>	Blackthorn	-	60-80	B	1+1; Transplant - seed raised, branched; 2 brks	20.00
R can	<i>Rosa canina</i>	Dog Rose	-	60-80	B	1+1; Transplant - seed raised, branched; 3 brks	20.00
S ci	<i>Salix cinerea</i>	Grey Willow	-	100-125	B	0/2; Cutting, branched; 3 brks	10.00
S auc	<i>Sorbus aucuparia</i>	Rowan	-	40-60	B	1+1; Transplant - seed raised	10.00

Wetland Flora Mix

Abbrev.	Botanical Name	Common Name	Girth/Dia. cm	Height cm	Root Zone	Specification	Mix %
E can	<i>Eupatorium cannabinum</i>	Hemp Agrimony	-	-	1L	Full pot; Sept to April planting; British native-orig	25.00
F u	<i>Filipendula ulmaria</i>	Meadowsweet	-	-	1L	Full pot; Sept to April planting; British native-orig	25.00
L sa	<i>Lythrum salicaria</i>	Purple Loosestrife	-	-	1.5-2L	Full pot	25.00
S pal	<i>Stachys palustris</i>	Marsh Woundwort	-	-	1L	Full pot; Sept to April planting; British native-orig	25.00

Outline Specification Notes

Existing vegetation and seeding retained on site

The current landscape plans do show retention of existing grassland and it is the aim of the landscape strategy to retain vegetation and seeding where possible. This will require an adaptable management approach to maintenance and subsequent review of landscape proposals post planning approval. All tree and shrub planting blocks to be underseeded with low maintenance grass seed mix.

Native woodland and shrub planting

Planting surfaces will be regulated to even grades, trimmed, cross-rippled at 450mm deep and picked to remove stones and debris exceeding 150mm diameter. In dry site and weather conditions, selected site topsoil in line with BS3882 (tested to confirm suitability) will be spread to a minimum of 300mm deep over subsoil. Prior to planting, all earthworks associated with landscape operations are to be made good, levels graded back to top and bottom of embankments and mounded using approved site-won topsoil as required.

Supply of plant transplants will be as shown on plan and plant schedule. Planting will be in single species groups of 5-13 plants, randomly mixed. All plants graded for size and form and treated with Algimure root dip prior to planting. Application rate should adhere to supplier recommendations: between 25-120g/ m² or 5-60g/ pit70g/m².

All tree and shrub planting to be protected by a biodegradable shelter guards and supporting stakes (either 'Bio-Earth Biodegradable Plastic-Free Tree Shelter', 'Green-Tech Tubex Ecostart Tree Shelter' or equal approved) Trees to be surrounded with fine grade bark mulched to a minimum diameter of 600mm and 75mm depth.

Meadow Grassland

The landscape approach to grassland reinstatement across the site is focused upon Low Maintenance Grassland Mix of Scottish/ Local Provenance.

- Low Maintenance Grassland Mix of Scottish/ Local Provenance - shrub & tree underseeding, platform embankments.

Seed mixes will ensure all species are native to Scotland. These decisions will be further informed by a National Vegetation Classification (NVC) assessment to be undertaken prior to works.

Where grass seeding into disturbed areas/made ground min 150mm site-won topsoil to be used.

Earthwork Principles

Formations shown are based upon topsoil, subsoil & cohesive superficial material stripped during the formation of the platform.

Notes

1. Do not scale from this drawing.
2. All dimensions are in metres/millimetres unless otherwise stated.
3. This drawing should be read in full colour.
4. No unauthorised disclosure, storage or copying.
5. This document is issued for the party which commissioned it and for specific purposes connected with the above-captioned project only. It should not be relied upon by any other party or used for any other purpose.
6. We accept no responsibility for the consequences of this document being relied upon by any other party, or being used for any other purpose, or containing any error or omission which is due to an error or omission in data supplied to us by other parties.
7. This document contains confidential information and proprietary intellectual property. It should not be shown to other parties without consent from us and from the party which commissioned it.
8. This drawing is to be read in conjunction with all relevant documents and drawings.
9. All spatial coordinates relate to the Ordnance Survey, British National Grid (OSGB36).
10. All levels are in meters and relate to AOD (Ordnance Survey).
11. Existing watercourses based on lidar data and osmap. © crown copyright and database rights 2022 ordnance survey (0100031673).

Key to symbols

	Planning application boundary (Red line boundary)		Proposed native woodland mix
	Existing contour lines		Proposed woodland edge mix
	Proposed contour lines		Proposed native shrub mix
	Existing water line		Proposed wetland shrub mix
	Retained existing vegetation (not shown on this plan) and seeding within site boundary		Proposed wetland flora mix
	Proposed specimen trees		Proposed wet grassland mix (good edge mix)
			Proposed low maintenance grassland mix of Scottish / Local provenance

Reference drawings

- 109116-MMD-KNOC-XX-DR-EE-0002 Electrical Layout
- 109116-MMD-KNOC-XX-DR-CE-0004 Earthworks Platform Design
- 109116-MMD-KNOC-XX-DR-CE-0005 Drainage Layout
- 109116-MMD-KNOC-XX-DR-CE-0010 Site Location Plan

P01	05/04/24	LL	FIRST ISSUE	AH	OJ
Rev	Date	Drawn	Description	Ch'k'd	App'd

Status Stamp

FOR COMMENT

M MOTT MACDONALD	Victory House Trafalgar Place Brighton, BN1 4FY United Kingdom T +44 (0)1273 365000 W www.mottmac.com
-------------------------------	--

Client

Project Name
Red John Connection

Site Name
Knocknagael Substation

Title
**Knocknagael Substation
Landscape Proposals
Landscape Scheme Overview Plan**

Sheet 01 of 01

Designed	R. Dale	RD	Eng check	A. Hedger	AH
Drawn	L. Lyu	LL	Coordination	J. Kensall	JK
Dwg check	J. Kensall	JK	Approved	O. Judge	OJ

MMD Project Number	Scale at A1	Security
109116	1:1500	STD
MML Drawing Number	Revision	
109116-MMD-KNOC-XX-DR-CE-0008	P01	
SSEN Drawing Number		
TBC		