

Lochay 132/11kV Transformer Replacement

Information Webinar

29 September 2020



Scottish & Southern
Electricity Networks

Attendees

Derek Mulgrew – Lead Project Manager

Stuart Gray– Project Manager

Steven Moore – Engineering Manager

Jason Deighan– Lead Engineer

Jill Wilson – Civils Engineer

Keith Smith – Consents and Environment Manager

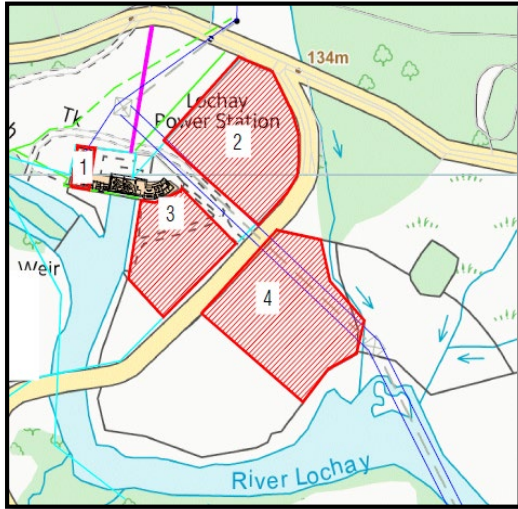
Robin Cameron – Wayleave Officer

Louise Anderson – Community Liaison Manager

Corinna Scholes – Corporate Affairs

What has been done and why

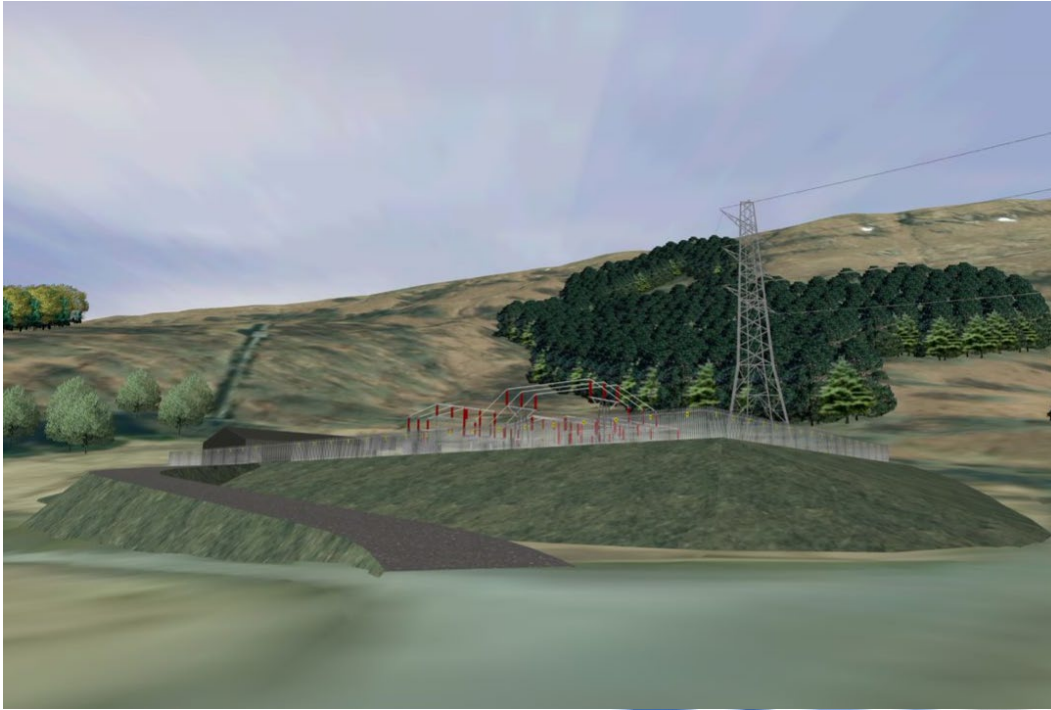
In 2018 SSE started a site selection process to identify the most appropriate way to replace the transformers at Lochay substation. The following areas were assessed:



The selection was based on the following criteria:

- Safety: compliant with the Electricity, Safety, Quality and Continuity (ESQC) Regulations.
- Technical: Electrical, Protection, OHL, Civils and Cabling works;
- Operational: Future Maintenance;
- Environmental: Proximity of Designations, Breeding Birds and Visual Impact;
- Wayleave: Lease or Purchase SSE Generation or third-party land;
- Economic: Costs for design and built including up front survey works;

May 2019 Option – Original Proposal



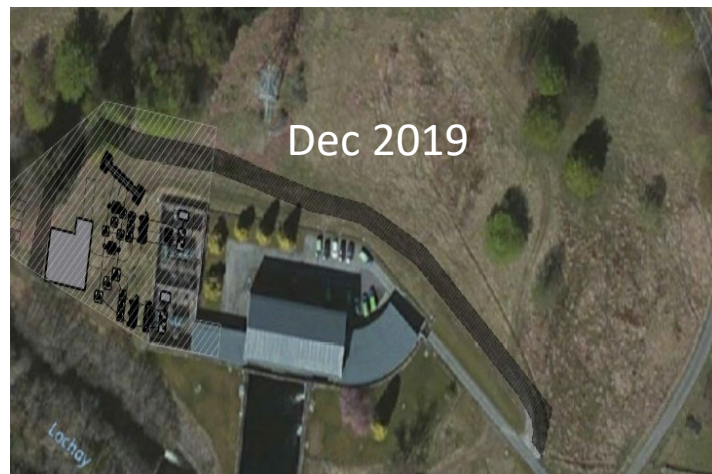
Platform Area 3890m²

What has been done and why

Following the selection process, location No.2 was the preferred site.



Following feedback provided at the public event in May 2019, SSE decided to explore site location No.1 further.



December 2019 Option – Replace in Situ



Platform Area
2940m²

What has been done and why

Although the Dec 2019 solution was presented to the community, there were still issues with this proposal that SSE could not overcome. E.g.

- Safety concerns for SSEN Transmission personnel due to reduce working area
- Safety concerns that SSE Renewables operations would be impeded during construction
- Water management concerns during the necessary power station outages
- Concerns that Ofgem guidance on Business separation were not being followed fully

September 2020

The result was a renewed focus on the original location No.2 where SSEN Transmission addressed the concerns identified following the May 2019 event.



Although location No.2 is more visible than location No.1, SSEN Transmission feel that the Sept 2020 proposal represents an inherently safer solution for all parties.

Sept 2020 Improvements

Between May 2019 and Sept 2020, the following improvements have been made to location No.2:

- Reduced substation footprint area due to some large equipment being designed out;
- Change of building location which helps screen substation compound from South;
- Replacement of steel pylon with lower height gantry structure;
- Removal of steel pylon adjacent to power station (Tower No.1);
- Lower platform level reduces visual impact and construction vehicle movements.

September 2020 Option – Original Site with New Design



Platform Area 3320m²

Q&A