



Plate 47: General view of TP20 post-excitation , looking east



Plate 48: General view of TP21 post-excitation , looking west



Plate 49: General view of TP22 post-excitation , looking west



Plate 50: General view of TP23 post-excitation , looking west



Plate 51: General view of TP24 post-excitation , looking north



Plate 52: General view of TP25 post-excitation, looking south



Plate 53: General view of TP26 post-excitation , looking southeast



Plate 54: General view of TP27 post-excitation, looking west



Plate 55: General view of TP28 post-excitation, looking north



Plate 56: General view of TP29 post-excitation, looking north



Plate 57: General view of TP30 post-excitation, looking north



Plate 58: General view of TP31 post-excitation, looking southeast



Plate 59: General view of TP32 post-excitation , looking south



Plate 60: General view of TP33 post-excitation. Drainage channel on north edge, looking east



Plate 61: General view of TP34 post-excitation. North arrow wrong, looking north



Plate 62: General view of TP35 post-excitation, looking west



Plate 63: General view of TP36 post-excitation , looking east



Plate 64: General view of TP37 post-excitation, looking south



Plate 65: View of original test pit showing linear running N-S, looking southeast



Plate 66: Detail view of linear running N-S, looking east



Plate 67: General view of TP38 post-excitation, looking south



Plate 68: General view of TP39 post-excitation, looking north



Plate 69: General view of TP40 post-excitation , looking northwest



Plate 70: General view of TP40 down to rubble quarry backfill layer, looking east



Plate 71: General view of TP41 post-excitation, looking northwest



Plate 72: General view of TP42 post-excitation, looking south



Plate 73: General view of TP43 post-excitation, looking south



Plate 74: General view of TP44 post-excitation, looking west



Plate 75: General view of TP45 post-excitation , looking west



Plate 76: General view of TP46 post-excitation , looking east



Plate 77: General view of TP47 post-excitation , looking east



Plate 78: General view of TP48 down to bedrock including the rock perimeter wall of quarry, looking east



Plate 79: General view of TP49 post-excitation , looking west



Plate 80: General view of TP50 post-excitation , looking south



Plate 81: General view of TP51 post-excitation , looking north



Plate 82: General view of TP52 post-excitation , looking east



Plate 83: General view of TP53 post-excitation , looking west



Plate 84: General view of TP54 post-excitation , looking south



Plate 85: General view of TP55 post-excitation , looking west



Plate 86: Detail view of E-W linear in north end of Trial Pit 56 before covering , looking south



Plate 87: General view of extended TP56 post-excitation , looking south



Plate 88: General view of TP57 post-excitation with plough scar towards south, looking south



Plate 89: General view of TP58 post-excitation , looking west



Plate 90: General view of TP59 post-excitation , looking southeast



Plate 91: General view of TP60 post-excitation , looking northeast



Plate 92: General view of TP61 post-excitation , looking east



Plate 93: General view of TP62 post-excitation , looking south



Plate 94: General view of TP63 post-excitation , looking south



Plate 95: General view of TP64 post-excitation , looking southeast



Plate 96: General view of TP65 post-excitation , looking NNW



Plate 97: General view of TP66 post-excitation , looking northwest



Plate 98: General view of TP67 post-excitation , looking NNW



Plate 99: General view of TP68 post-excitation , looking northwest



Plate 100: General view of TP69 post-excitation , looking south



Plate 101: General view of TP07 post-excitation , looking north



Plate 102: General view of TP70 down to rubble quarry backfill layer, looking north



Plate 103: General view of Site 1, looking SSE



Plate 104: General view of Site 1, looking south



Plate 105: General view of south end of Site 1 looking over kiln barn, looking SSE



Plate 106: Detailed view of Site 1 kiln bowl, looking southwest



Plate 107: General view of Site 1, looking northwest



Plate 108: General view of Site 2, looking southeast



Plate 109: General view of Site 3, looking southeast



Plate 110: General view of Site 4, looking northeast

Appendix 1: Archaeological Feature Register

Trial Pit Number	Description
TP38	Linear feature aligned N-S located towards west edge. Measured 0.64m wide. Possible drainage channel
TP56	Linear feature aligned E-W located towards north edge. Measured 0.64m wide with steep edge to south

Appendix 2: Borehole and Trial Pit Register

Borehole/ Trial Pit No.	Width	Length	Comments	Depth	Orientation
BH01	0.3	0.35	Mid grey-brown silty sand topsoil over natural light brown grey clay	0.4	E-W
TP01	2	2.7	Mid grey-brown silty sand topsoil over natural light brown clay sand	0.3	N-S
BH02	0.3	0.35	Mid grey-brown silty sand topsoil over natural light brown clay sandy	0.4	N-S
TP02	2	3.9	Mid grey-brown silty sand topsoil over natural light brown clay. Hook test carried out to west on 8/8/23	0.3	N-S
TP03	2	3.9	Mid grey-brown silty sand topsoil over natural very light brown clay	0.3	E-W
BH03	0.3	0.35	Mid grey-brown silty sand topsoil over natural light brown silty sand	0.35	E-W
TP04	2	3.5	Peaty topsoil over natural very light brown clay	0.35	N-S
BH04	0.3	0.4	Mid grey-brown silty sand topsoil over natural light grey clay	0.2	E-W
TP05	2	3.8	Peaty topsoil over natural very light brown clay with occasional medium rounded stones	0.25	N-S
BH05	0.3	0.35	Mid grey-brown silty sand topsoil over natural light brown clay sand	0.2	N-S
TP06	2	3.4	Peaty topsoil over natural light brown sandy clay	0.3	E-W
BH06	0.4	0.4	Mid grey-brown silty sand topsoil over natural light grey sand	0.35	E-W
TP07	2	3.9	Peaty topsoil over natural light brown-grey clay	0.55	N-S
BH07	0.4	0.4	Mid grey-brown silty sand topsoil over natural grey clay	0.35	E-W
TP08	2	3.5	Mid grey-brown silty sand topsoil over natural light brown clay sand	0.35	N-S
BH08	0.4	0.4	Peaty topsoil over natural grey sandy silt	0.7	E-W
TP09	2	3.3	Mid grey-brown silty sand topsoil over natural light brown clay. Plough scarring noted in upper natural level	0.4	N-S
BH09	0.3	0.35	Peaty topsoil over natural grey silty sand	0.25	E-W
BH10	0.3	0.35	Mid grey-brown silty sand topsoil over natural light brown sandy silt	0.3	E-W

Borehole/ Trial Pit No.	Width	Length	Comments	Depth	Orientation
TP10	2	3.4	Mid grey-brown silty sand topsoil over natural light brown clay sand. Plough scarring noted at upper natural level	0.35	N-S
BH11	0.3	0.3	Peaty topsoil over natural light grey sandy silt	0.55	E-W
TP11	2	3.3	Peaty topsoil over natural light grey-brown clay sand	0.3	N-S
BH12	0.35	0.35	Mid grey-brown silty sand topsoil over natural light grey sandy silt	0.3	E-W
TP12	2	3.45	Peaty topsoil over natural grey clay	0.45	E-W
BH13	0.33	0.37	Mid grey-brown silty sand topsoil over natural light tan clay	0.37	E-W
TP13	2	4	Redeposited natural over peat over natural light grey clay. Redeposited natural probably from adjacent open ditch	0.5	N-S
TP14	2	3.8	Peaty topsoil over natural grey brown silty clay	0.45	N-S
BH14	0.3	0.4	Made ground over natural Grey sand clay - Modern trackway	0.55	E-W
BH15	0.35	0.35	Mid grey-brown silty sand topsoil over natural grey clay sand	0.25	E-W
TP15	2	3.2	Peaty topsoil over natural grey brown clay	0.2	N-S
BH16	0.33	0.36	Mid grey-brown silty sand topsoil over natural mid grey clay. Interface between is gradual approx. 0.15m	0.54	E-W
TP16	2	3.6	Mid grey-brown silty sand topsoil over natural grey clay	0.35	E-W
BH17	0.33	0.35	Dark brown silty sand over natural light grey clay	0.45	E-W
TP17	2	3.5	Mid grey-brown silty sand topsoil over natural grey brown clay	0.3	E-W
BH18	0.33	0.33	Mid grey-brown silty sand topsoil over light brown-grey sandy clay	0.38	N-S
TP18	2	3.7	Mid grey-brown silty sand topsoil over natural grey brown clay	0.35	N-S
TP19	2	3.2	Mid grey-brown silty sand topsoil over natural grey brown clay	0.35	N-S
BH19	0.3	0.37	Dark brown silty sand with frequent rooting over natural light grey brown sandy clay	0.4	E-W
BH19A	0.35	0.38	Topsoil dark brown silty sand over light brown silty clay natural	0.35	E-W
TP20	2	4.1	Peaty topsoil over natural grey clay and shattered stone	0.3	E-W
BH20	0.3	0.3	Mid grey-brown silty sand topsoil over natural light grey clay	0.3	E-W
BH21	0.33	0.32	Light grey-brown sandy silt topsoil over light grey sandy clay with frequent stone inclusions. Interface between is gradual approx. 0.15m	0.45	N-S
TP21	2	3.5	Mid grey-brown silty sand topsoil over natural grey brown clay	0.1	E-W
TP22	2	4	Mid grey-brown silty sand topsoil over natural very light brown sandy clay	0.3	E-W
BH22	0.28	0.28	Dark brown topsoil over natural light tan clay	0.4	E-W
TP23	2	3.8	Mid grey-brown silty sand topsoil over natural light grey brown clay	0.25	E-W
BH23	0.33	0.38	Mid brown sandy silt over natural tan sandy clay	0.25	E-W
BH24	0.42	0.53	Mid grey-brown silty sand topsoil with frequent ceramic field drain and sub-angular stone fragments up to 0.1m. Rare post medieval pottery. Likely made ground. 1.1m deep unable to reach natural with hand digging	1.1	N-S

Borehole/ Trial Pit No.	Width	Length	Comments	Depth	Orientation
TP24	2	3.8	Peaty topsoil over natural grey clay and stone	0.4	N-S
TP25	2	3.4	Topsoil composed of peaty sand with abundant rooting. Natural is a light grey brown clay with mid brown mottling. Interface between is gradual	0.58	N-S
BH25	0.3	0.33	Dark brown silty sand topsoil over natural light grey clay	0.35	N-S
TP26	2	3.3	Peaty topsoil over natural light grey brown clay	0.4	NW-SE
BH26	0.33	0.35	Light brown-grey sandy topsoil over natural light yellowish brown mottled silty clay	0.38	E-W
TP27	2	3.8	Mid grey-brown silty sand topsoil over natural mid-light grey tan clay. Soil test pit excavated adjacent to Trial Pit on 3/8/23	0.35	E-W
TP28	2	3.2	Light-mid brown silty sand topsoil over natural light tan/grey clay - moved 5m to avoid archaeology. Soil test pit excavated to the west on 3/8/23	0.47	N-S
TP29	2	4	Mid grey-brown topsoil with gradual interface c0.1m over natural light grey-tan mottled clay	0.43	N-S
TP30	2	4.25	Mid grey-brown silty sand topsoil over natural light tan clay	0.43	N-S
TP31	2	4.2	Peaty sand topsoil over natural light grey clay with flat stone inclusions	0.6	NW-SE
TP32	2	3.6	Mid to dark brown silty sand topsoil with frequent rooting over natural light grey brown sandy clay	0.35	N-S
TP33	2	3.6	Mid brown silty sand topsoil over natural light to mid orange-brown sandy clay. E-W aligned field drain running along north edge of the trial pit c0.2m in. Used a smaller bucket to excavate to depth avoiding field drain	0.55	E-W
TP34	2	3.5	Dark grey brown silty sand topsoil over natural light tan grey sandy clay with sandstone fragments	0.54	N-S
TP35	2	3.4	Dark grey-brown silty sand topsoil over natural mid grey sandy clay	0.37	E-W
TP36	2	4.45	Light yellowish brown sand topsoil over natural light orange grey silty clay with mid to dark grey mottling	0.48	E-W
TP37	2	3.9	Topsoil is a mix of mid to dk grey peat/sandy silt with frequent rooting over natural mid grey sandy clay with large flat stone inclusions	0.57	N-S
TP38	2	3.7	Initial pit excavated contained N-S linear from NE to SW corner. Measured 0.64m wide with clear sharp edges. Likely drainage channel. Fill mid-dark brown-grey silty sand with occasional angular stone inclusions. Moved trial pit 2m to east to avoid destruction. Topsoil is a mix of mid to dk grey peat/sandy silt with frequent rooting over natural mid grey sandy clay with large flat stone inclusions. Interface gradual between topsoil and natural c0.15m	0.47	E-W
TP39	2	3.7	Mid grey-brown clayey sand topsoil over natural mid orange brown sandy clay with grey mottling. Interface between is gradual c0.15m	0.5	N-S
TP40	2	3.4	Mid grey-brown peaty topsoil over natural mid orangey brown clay with light grey mottling	0.48	E-W
TP41	2	3.8	Mid to light brown-grey silty sand topsoil with occasional sub rectangular flat stone fragments over natural light yellow brown sandy clay with frequent large flat stone inclusions up to 80%	0.55	NW-SE
TP42	2	3.8	Peaty topsoil over natural light to mid grey clay	0.32	N-S
TP43	2	3.8	Mid grey-brown topsoil with gradual mottled interface over natural mid to dark grey clay with frequent flat stone inclusions	0.57	N-S
TP44	2	8.2	Dark brown grey silty sand topsoil over natural orange and mid grey mottled sandy clay with frequent sub-angular stone inclusions. Initial trial pit revealed 0.45m wide N-S aligned stone filled field drain running c0.6m from east end of trial pit. Covered over 4.3m and extended trial pit to the west. NE-SW aligned spur c1m to west. Covered and extended trial pit west	0.4	E-W

Borehole/ Trial Pit No.	Width	Length	Comments	Depth	Orientation
TP45	2	3.7	Mid to dark grey-brown sandy topsoil over natural light orange-brown sandy clay with grey mottling and frequent sub-angular stone inclusions. Interface between is diffuse c0.17m	0.3	E-W
TP46	2	3.7	Mid to dark grey-brown sandy topsoil over natural light orange-brown sandy clay with grey mottling and frequent sub-angular stone inclusions. Interface between is diffuse c0.17m	0.4	E-W
TP47	2	4.3	Mid brown silty sand topsoil over natural mid grey sandy clay	0.3	E-W
TP48	2	7.6	Mid brown stoney peaty silt topsoil over a layer of stoney quarry backfill which sat on bedrock at a depth of 1.6-2.6m. Pit was located at edge of quarry against the old quarry wall	0.25	E-W
TP49	2	2.5	Mid grey-brown peaty topsoil over natural mid orangey brown sandy clay with light grey mottling	0.25	E-W
TP50	2	3.3	Mid grey-brown peaty topsoil over natural mid orangey brown sandy clay with light grey mottling	0.52	N-S
TP51	2	3	Mid grey-brown peaty topsoil over natural mid orangey brown sandy clay with light grey mottling	0.33	N-S
TP52	2	4.2	Light grey brown sandy topsoil with frequent roots over natural light grey and orange sandy clay	0.3	E-W
TP53	2	3.8	Dark brown silty sand topsoil over natural mid orangey grey sandy clay. Trial pit moved slightly to south as initial north edge disturbed bee's nest	0.28	E-W
TP54	2	4	Dark greyish brown silty sand topsoil over natural mid to dark grey sandy clay with black mottling	0.3	N-S
TP55	2	3.4	Mid to light yellowish brown silty sand topsoil over natural mottled light grey and orange silty clay	0.4	E-W
TP56	2	5.6	Light yellowish brown silty sand topsoil over natural mid to light yellow grey silty clay. E-W linear running across North end of trial pit c1.45m from original edge 0.64m wide, with a dark grey-brown sandy clay fill. Investigation of southern extent showed steep edge. Covered over area and extended trial pit to south to avoid	0.47	N-S
TP57	2	3.8	Mid to dark grey-brown silty sand topsoil over natural mid orange-brown and grey mottled sandy clay. Plough scarring seen running roughly E-W 2m from the southern edge 0.17m wide	0.3	N-S
TP58	2	3.1	Dark grey brown peaty topsoil over natural mid to light grey brown sandy clay with iron pan mottling. Interface between is gradual c0.08m	0.38	E-W
TP59	2	3.2	Mid grey-brown peaty topsoil over natural mid orangey brown sandy clay natural with light grey mottling	0.31	NW-SE
TP60	2	2.5	Mid grey-brown mottled peaty topsoil over natural mid orangey brown stoney, gravel (located in former quarry) indistinct interface between layers	0.35	NE-SW
TP61	2	3.5	Mid orange brown silty sand topsoil over natural mottled orange and mid grey silty clay	0.43	E-W
TP62	2.6	3.4	Dark grey-brown sandy silt topsoil over natural mid orange grey sandy clay. Drainage ditch located along west edge of original trial pit c0.4m wide, extended trial pit 0.6m to east to avoid	0.4	N-S
TP63	2	2.8	Mid grey-brown peaty topsoil over natural mid orangey brown stoney clay	0.42	N-S
TP64	2	3.2	Mid grey-brown peaty topsoil over natural mid orangey brown stoney, sandy clay	0.35	N-S
TP65	2	2.5	Mid grey-brown mottled peaty silt topsoil over mid orangey brown stoney, gravel (located in former quarry) indistinct interface between layers	0.35	NW-SE
TP66	2	3	Mid grey-brown peaty topsoil over mid orangey brown stoney, gravely sand located in former quarry)	0.3	NW-SE
TP67	2	2.7	Mid grey-brown mottled peaty topsoil over mid orangey brown stoney, gravely sand (located in former quarry) indistinct interface between layers	0.5	NW-SE
TP68	2	2.8	Mid grey-brown mottled peaty topsoil over mid orangey brown stoney, gravely sand (located in former quarry) indistinct interface between layers	0.3	NW-SE

Borehole/ Trial Pit No.	Width	Length	Comments	Depth	Orientation
TP69	2	2.8	Mid grey-brown peaty topsoil over natural mid orangey brown sandy clay	0.5	N-S
TP70	2	3	Topsoil is mid brown sandy peat mixed with quarry backfill of stone rubble, and modern ceramic, glass, and rubbish. The layer below is a combination of orange brown stoney gravel and rubble which sits over bedrock at a depth of 2.5m. The rubble includes agricultural waste and some coal tar. The interface is very indistinct with modern patches mottled throughout. Pit is within the old quarry and was likely used as a dumping point for the surrounding areas	0.6	N-S

Appendix 3: Walkover Survey Site Gazetteer

Site No.	Site Type	Site Name	HER No.	Description	Alignment	Condition	Period	Easting	Northing
1	Building	Farmstead	MHG19155	Under grass and turf is the remains of a stone built double faced building with multiple compartments, the walls measure, 0.6 m wide and stand up to 0.5 m high. There appears to be a green drain, kiln at the south end of the structure. The building measures 28 m long over walls and 3.5 m internally. There are two small square porches is attached to the west side	NNW-SSE	Degraded	Post-medieval	315649	956573
2	Building	Farmstead	MHG19155	Under grass and turf is a stone built structure with double faced walls measuring 0.7 m wide and standing up to 0.5 m high. It measures 5.5 m by 3 m internally and there is a type of wall on the southside	NNW-SSE	Degraded	Post-medieval	315666	956580
3	Sheepfold	-	-	Double-faced drystone circular enclosure measuring c. 19m in diameter and standing up to 1.4m	-	-	-	316115	956863
4	Cairn	-	-	Under moss and grass is a stone cairns measuring 4 m by 3 m and up to 0.3 m high. It appears to have been here for quite a while and it's unclear if this is of any particular date or type of cairn	-	Ruinous	Unknown	316112	956545
5	Building	-	MHG19157	Under grass and turf is the remains of a rectangular stone built structure measuring c. 27.5 m by 6.4 m, standing up to c. 0.35m high. The structure is in a ruinous state, overgrown vegetation in the area makes it difficult to identify internal divisions	NNW-SSE	Ruinous	Post-medieval	316208	956969

Appendix 4: Photographic Register

Photo No. Start	Photo No. End	Borehole/Trial Pit No.	Feature No.	Description	Direction Facing	Date
1	2	BH02	-	General view of BH02 post-excavation	S	26/07/2023
3	4	BH05	-	General view of BH05 post-excavation	N	26/07/2023
5	6	TP01	-	General view of TP01 post-excavation	N	26/07/2023
7	8	TP10	-	General view of TP10 post-excavation	N	26/07/2023
9	10	TP11	-	General view of TP11 post-excavation	N	26/07/2023
11	12	TP02	-	General view of TP02 post-excavation	N	27/07/2023
13	14	TP09	-	General view of TP09 post-excavation	N	27/07/2023
15	16	TP12	-	General view of TP12 post-excavation	N	27/07/2023
17	18	BH06	-	General view of BH06 post-excavation	W	27/07/2023
19	20	BH04	-	General view of BH04 post-excavation	W	27/07/2023
21	22	TP08	-	General view of TP08 post-excavation	S	27/07/2023
23	24	TP13	-	General view of TP13 post-excavation	E	27/07/2023
25	26	TP13	-	General view of TP13 south facing section	S	27/07/2023
27	28	TP03	-	General view of TP03 post-excavation	E	28/07/2023
29	30	TP04	-	General view of TP04 post-excavation	N	28/07/2023
31	32	TP05	-	General view of TP05 post-excavation	N	28/07/2023
33	34	TP06	-	General view of TP06 post-excavation	E	28/07/2023
35	36	BH07	-	General view of BH07 post-excavation	E	28/07/2023
37	38	BH01	-	General view of BH01 post-excavation	E	28/07/2023
39	40	BH03	-	General view of BH03 post-excavation	E	28/07/2023
41	42	BH08	-	General view of BH08 post-excavation	E	28/07/2023
43	44	TP15	-	General view of TP15 post-excavation	N	28/07/2023
45	46	BH09	-	General view of BH09 post-excavation	E	28/07/2023
47	48	BH10	-	General view of BH10 post-excavation	E	28/07/2023
49	50	BH11	-	General view of BH11 post-excavation	E	28/07/2023
51	52	BH12	-	General view of BH12 post-excavation	E	28/07/2023
53	54	TP14	-	General view of TP14 post-excavation - mislabelled BH14	N	28/07/2023
55	56	-	-	Void		28/07/2023
57	58	TP70	-	General view of TP07 post-excavation	N	28/07/2023
59	60	TP16	-	General view of TP16 post-excavation	E	28/07/2023
61	61	TP17	-	General view of TP17 post-excavation	W	28/07/2023
62	63	TP18	-	General view of TP18 post-excavation	N	28/07/2023
64	65	TP19	-	General view of TP19 post-excavation	N	28/07/2023
66	67	BH15	-	General view of BH15 post-excavation	E	01/08/2023
68	69	TP24	-	General view of TP24 post-excavation	N	01/08/2023
70	71	TP23	-	General view of TP23 post-excavation	W	01/08/2023
72	73	TP22	-	General view of TP22 post-excavation	W	01/08/2023
74	75	TP21	-	General view of TP21 post-excavation	W	01/08/2023
76	77	TP20	-	General view of TP20 post-excavation	E	01/08/2023
78	79	BH14	-	General view of BH14 post-excavation	W	01/08/2023
80	81	BH20	-	General view of BH20 post-excavation	E	03/08/2023
82	83	TP27	-	General view of TP27 post-excavation	W	03/08/2023
84	85	TP43	-	General view of TP43 post-excavation	S	03/08/2023

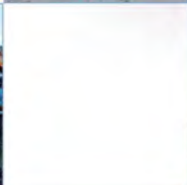
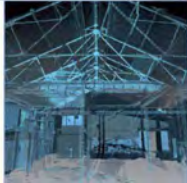
Photo No. Start	Photo No. End	Borehole/Trial Pit No.	Feature No.	Description	Direction Facing	Date
86	87	TP42	-	General view of TP42 post-excavation	S	03/08/2023
88	89	TP28	-	General view of TP28 post-excavation	N	03/08/2023
90	92	TP29	-	General view of TP29 post-excavation	N	03/08/2023
93	94	BH16	-	General view of BH16 post-excavation	E	03/08/2023
95	96	-	-	Void	N	03/08/2023
97	98	TP30	-	General view of TP30 post-excavation	N	03/08/2023
99	100	BH13	-	General view of BH13 post-excavation	W	03/08/2023
101	102	BH22	-	General view of BH22 post-excavation	E	03/08/2023
103	104	TP26	-	General view of TP26 post-excavation	SE	03/08/2023
105	106	TP25	-	General view of TP25 post-excavation	S	03/08/2023
107	108	TP31	-	General view of TP31 post-excavation	SE	03/08/2023
109	110	TP32	-	General view of TP32 post-excavation	S	03/08/2023
111	112	BH23	-	General view of BH23 post-excavation - mislabelled as BH25	E	03/08/2023
113	114	TP33	-	General view of TP33 post-excavation. Drainage channel on north edge	E	03/08/2023
115	116	BH17	-	General view of BH17 post-excavation	W	03/08/2023
117	118	BH19	-	General view of BH19 post-excavation - mislabelled as BH18	E	03/08/2023
119	120	TP34	-	General view of TP34 post-excavation. North arrow wrong	N	03/08/2023
121	122	TP41	-	General view of TP41 post-excavation	NW	07/08/2023
123	124	TP40	-	General view of TP40 post-excavation	NW	07/08/2023
125	126	TP39	-	General view of TP39 post-excavation	N	07/08/2023
127	128	BH23	-	General view of BH23 post-excavation	N	07/08/2023
129	130	BH18	-	General view of BH18 post-excavation	N	08/08/2023
131	133	BH24	-	General view of BH24 post-excavation. Not excavated down to natural. Stopped at 1.1m	N	08/08/2023
134	135	BH21	-	General view of BH21 down to stoney natural	S	08/08/2023
136	137	TP38	-	View of original trial pit showing linear running N-S	SE	09/08/2023
138	138	TP38	-	Detail view of linear running N-S	E	09/08/2023
139	140	TP38	-	General view of TP38 post-excavation	S	09/08/2023
141	142	TP37	-	General view of TP37 post-excavation	S	09/08/2023
143	144	BH26	-	General view of BH26 post-excavation	E	09/08/2023
145	146	TP36	-	General view of TP36 post-excavation	E	09/08/2023
147	148	TP35	-	General view of TP35 post-excavation	W	09/08/2023
149	150	TP56	-	View of E-W linear in North end of trial pit before covering	S	10/08/2023
151	152	TP56	-	General view of extended TP56 post-excavation	S	10/08/2023
153	154	TP55	-	General view of TP55 post-excavation	W	10/08/2023
155	156	TP61	-	General view of TP61 post-excavation	E	10/08/2023
157	158	BH19A	-	General view of BH19a post-excavation	E	10/08/2023
159	160	TP46	-	General view of TP46 post-excavation	E	10/08/2023
161	162	TP45	-	General view of TP45 post-excavation	W	10/08/2023
163	164	TP44	-	General view of TP44 post-excavation	W	10/08/2023
165	166	TP54	-	General view of TP54 post-excavation	S	10/08/2023
167	168	TP47	-	General view of TP47 post-excavation	E	10/08/2023

Photo No. Start	Photo No. End	Borehole/Trial Pit No.	Feature No.	Description	Direction Facing	Date
169	170	TP52	-	General view of TP52 post-excavation	E	10/08/2023
171	173	TP53	-	General view of TP53 post-excavation	W	11/08/2023
174	175	TP57	-	General view of TP57 post-excavation with plough scar towards south	S	11/08/2023
176	177	TP58	-	General view of TP58 post-excavation	W	11/08/2023
178	179	TP62	-	General view of TP62 post-excavation	S	11/08/2023
180	180	TP63	-	General view of TP63 post-excavation	S	14/08/2023
181	181	TP64	-	General view of TP64 post-excavation	SE	14/08/2023
182	182	TP51	-	General view of TP51 post-excavation	N	14/08/2023
183	183	TP59	-	General view of TP59 post-excavation	SE	14/08/2023
184	184	TP50	-	General view of TP50 post-excavation	S	14/08/2023
185	185	TP69	-	General view of TP69 post-excavation	S	16/08/2023
186	186	TP66	-	General view of TP66 post-excavation	NW	16/08/2023
187	187	TP67	-	General view of TP67 post-excavation	NNW	16/08/2023
188	188	TP68	-	General view of TP68 post-excavation	NW	16/08/2023
189	189	TP65	-	General view of TP65 post-excavation	NNW	16/08/2023
190	190	TP60	-	General view of TP60 post-excavation	NE	16/08/2023
191	191	TP49	-	General view of TP49 post-excavation	W	16/08/2023
192	192	TP70	-	General view of TP70 down to rubble quarry backfill layer	N	16/08/2023
193	193	TP40	-	General view of TP40 down to rubble quarry backfill layer	E	16/08/2023
194	194	TP48	-	General view of TP48 down to bedrock (no scale bar or label) including the rock perimeter wall of quarry	E	16/08/2023
195	195	-	Site 1	Walkover general view of Site 1	SSE	16/08/2023
196	196	-	Site 1	Walkover general view of Site 1	S	16/08/2023
197	197	-	Site 1	Walkover general view of Site 1 - south end view over kiln barn	SSE	16/08/2023
198	198	-	Site 1	Walkover detail view of Site 1 kiln bowl	SW	16/08/2023
199	199	-	Site 1	Walkover general view of Site 1 - location	NW	16/08/2023
200	200	-	Site 2	Walkover general view of Site 2	SE	16/08/2023
201	201	-	Site 3	Walkover general view of Site 3	SE	16/08/2023
202	202	-	Site 4	Walkover general view of Site 4	NE	16/08/2023

Appendix 5: OASIS Summary

OASIS Summary for aocarcha1-519505

OASIS ID (UID)	aocarcha1-519505
Project Name	New Spittal Substation, Spittal, Caithness Archaeological Watching Brief and Walkover Survey
Sitename	New Spittal Substation, Spittal, Caithness
Sitecode	70767
Activity type	Watching Brief, Walkover Survey
Reason For Investigation	Planning: Post determination
Organisation Responsible for work	AOC Archaeology Group
Project Dates	02-Aug-2023 - 18-Aug-2023
Location	New Spittal Substation, Spittal, Caithness NGR : ND 15875 56838 LL : 58.49159028931645, -3.444777089114211 12 Fig : 315875,956838
Administrative Areas	Parish : Halkirk Council : Highland Country : Scotland
Project Methodology	An archaeological watching brief was required during site clearance and excavation works to protect the archaeological and historical interest of the site. All ground breaking works were monitored by a suitably qualified archaeologist. Excavations of the Trial Pits were carried out using a mechanical excavator fitted with a c.2m wide straight-edged bucket. The Borehole locations were excavated by hand to a diameter of c.0.3-0.4m to the natural subsoil, prior to the commencement of drilling. This monitoring occurred in order to establish the presence or absence of archaeological remains within the site. In addition to the watching brief a walkover survey was conducted by one archaeologist. The development area was systematically walked, and sites were recorded using written descriptions and high-resolution digital photography, with their locations being recorded using ArcGIS Field Maps.
Project Results	Two archaeological features were identified within Trial Pits 38 and 56 and comprised linear features of unknown date and function. Four upstanding structures were identified during the walkover of the development area in addition to those known in the historic record, including two buildings, one cairn and one sheepfold.
Keywords	FARMSTEAD - Post Medieval - Monument Type Thesaurus (Scotland) SHEEPFOLD - Post Medieval - Monument Type Thesaurus (Scotland) CLEARANCE CAIRN - Period Unknown - Monument Type Thesaurus (Scotland) LINEAR FEATURE - Period Unknown - Monument Type Thesaurus (Scotland)
Funder	Private or public corporation Environmental Resource Management LTD
Person Responsible for work	Mary Peteranna
Archives	
DES description	
NGR	ND 15875 56838



AOC Archaeology (Inverness) The Old Estate Office Rosehaugh Estate Avoch Ross-shire IV9 8RF
| tel: 01463 819 841 | mob: 07972 259 255 | e-mail: inverness@aocarchaeology.com

www.aocarchaeology.com