

Report on Consultation

Beauly to Blackhillock to New Deer to
Peterhead 400kV Project.

6th December 2023



Agenda

1. Welcome and introductions
2. Project overview
3. What is a Report on Consultation?
4. Consultation events overview
5. Overview of feedback
6. Highland Council area – key changes and decisions
7. Moray Council Area – key changes and decisions
8. Aberdeenshire Council area – key changes and decisions
9. Next steps
10. Questions

Welcome and Introductions

Thank you for joining our Report on Consultation briefing session this morning.

SSEN Transmission representatives from the project team will provide an overview of the Report on Consultation document and detail next steps in the development of the project.

There will be an opportunity to ask questions at the end of the presentation.



Ryan Davidson
Community Liaison Manager
SSEN Transmission



Cath Swan
Senior Project Manager
SSEN Transmission



Josh Robertson
Project Manager
SSEN Transmission



Heather Gray
Senior Environment &
Consents Manager
SSEN Transmission



Colin Thompson
OHL Engineer
SSEN Transmission



Jennifer Lucas
Lead Land Manager
SSEN Transmission

Project Overview

Cath Swan

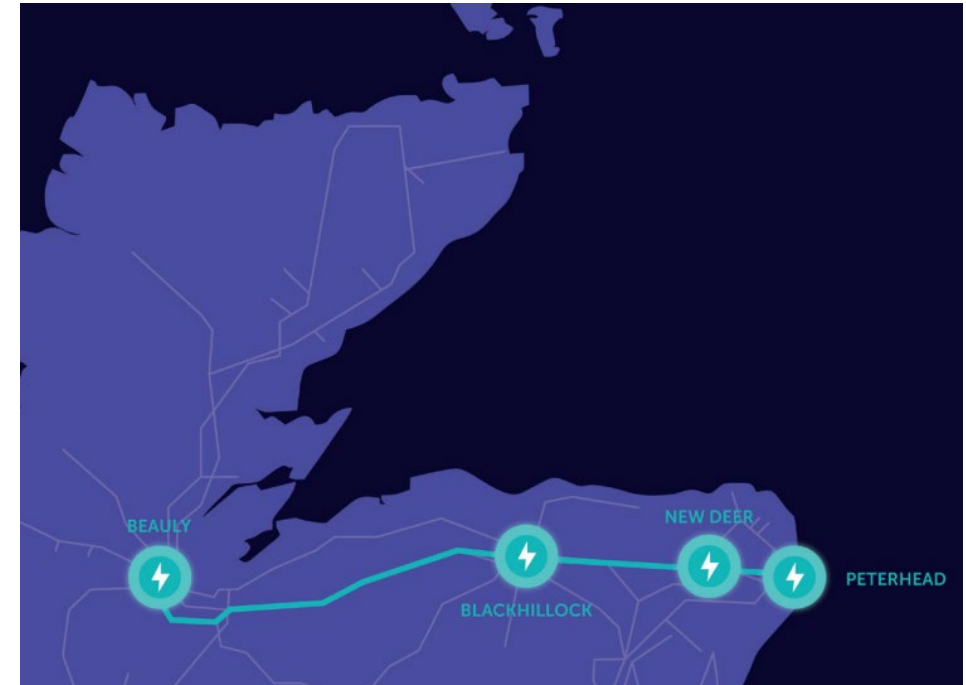
Senior Project Manager



Project overview

Beauly – Blackhillock – New Deer – Peterhead 400kV OHL connection

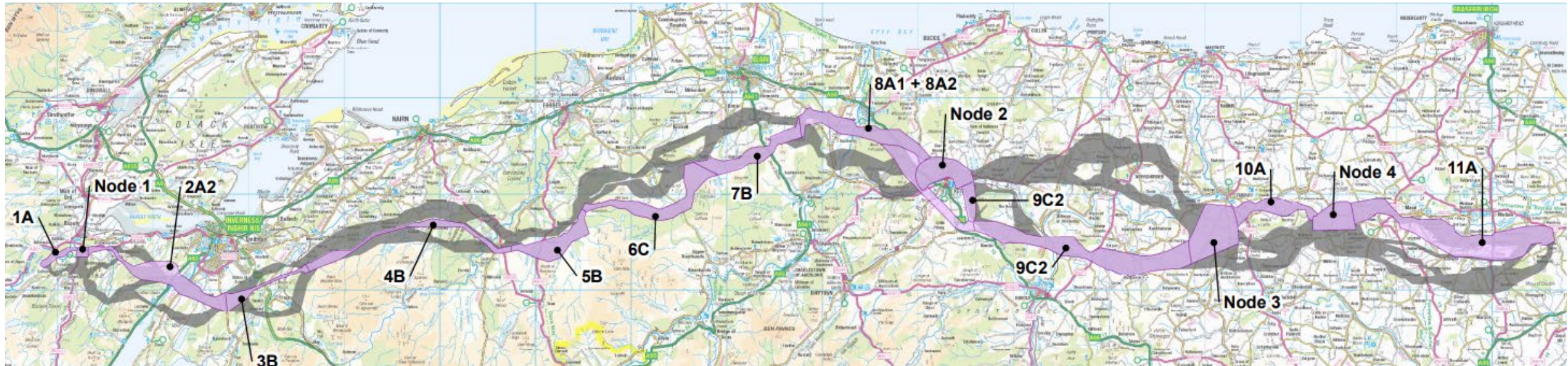
- A new 400kV connection between Beauly and Blackhillock
- A new 400kV connection between Blackhillock and New Deer
- A new 400kV connection between New Deer and Peterhead
- New 400kV substations and associated infrastructure at Beauly, Blackhillock, New Deer and Peterhead
- Removal of the existing 132kV overhead line from Beauly to Knocknagael following establishment of the new 400kV connection.



Project overview

Beauly – Blackhillock – New Deer – Peterhead 400kV connection

The consideration of the entire OHL route was divided into eleven geographical sections to help manage the appraisal and reporting process as below:



Section 1 – Beauly Area substation to south of Beauly
Section 2 – South of Beauly to south of Inverness
Section 3 – A9 and River Nairn crossing
Section 4 – South of Culloden to Ferness
Section 5 – Ferness to South of Forres
Section 6 – South of Forres to Kellas

Section 7 – Kellas to Teindland
Section 8 – Teindland to Keith
Section 9 – Keith to south of Turriff
Section 10 – south of Turriff to New Deer
Section 11 – New Deer to Peterhead

What is a Report on Consultation?

Report on Consultation

The purpose of this Report on Consultation (RoC) is to document the consultation responses received as part of our route consultation process for the proposed Beauly to Blackhillock to New Deer to Peterhead 400 kV overhead line (OHL) project.

This Report details:

- The consultation process undertaken, including details of consultation methods and advertising
- Event locations and number of people in attendance
- Stakeholders consulted with and/or contributing to the process
- Feedback received, including objections, concerns, questions and statements of support

The project specific feedback was responded to under the three themes:

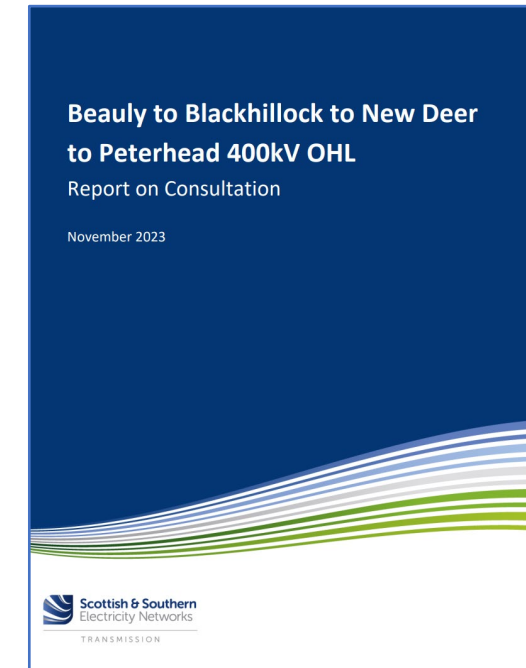
1. Community Impact
2. Environmental Impact
3. Economic Impact

It also sets out clearly how stakeholder feedback has influenced decisions made regarding the option taken forward. The report concludes by confirming these key decisions and confirming the Proposed Route to be progressed.

Report on Consultation

Why and When do we publish RoCs?

- RoCs are published once all consultation feedback has been analysed and the preferred routes and sites have been reviewed
- Depending on the size of the project this can be upwards of 6 weeks
- For the projects consulted upon, the analysis, route and site reviews along with writing the RoC reports has taken 25 weeks from the end of the consultation period to publication.
- RoCs provide stakeholders with the routes and sites being taken forward to the next stage of development: OHL – Alignment and for Substations – Design for Pre-Application Consultation



Our consultation process

Ryan Davidson
Community Liaison Manager



Engagement process



Consultation events overview

Events took place from 17 – 27 April 2023.

Promoted in local and regional newspapers and social media.

Postcard invites sent to 28,230 homes and 849 businesses.

The 10 events had a total of 995 attendees. An extra event in the morning was added in Nairn by request from a local councillor.

The public consultation period was open from 14 April 2023 until 9 June 2023. In response to calls for an extension to the consultation period, the consultation deadline was extended twice, finally closing on 30 June 2023.



Scan me

New Beaully Blackhillock New Deer Peterhead 400kV Project Public consultation events

Following our initial public consultation events in September 2022, SSEN Transmission will present our route options for the overhead line connection between new substations at Beaully and Peterhead, via new substations at Blackhillock and New Deer.

The events will give members of the public an opportunity to view our proposals and speak with members of the project team. This will be followed by an extended feedback period from the final event, during which all stakeholders are invited to provide feedback specific to the proposals at this stage.

Although we are entering a period of consultation, the project team will always accept feedback and input throughout the development stage of the project.

We are inviting interested parties to attend our drop-in consultation events, meet the team, find out more about our route options and provide feedback.

Virtual Consultation

For those unable to attend the events in-person, we will host a virtual exhibition on our project web page which will enable stakeholders to view our proposals and submit questions and comments to the project team. Further details will be available on the project web page.

The consultation events will be taking place on:

- 17 April - Peterhead 2-7pm Balmoor Stadium, Lord Catto Park AB42 1EU
- 18 April - New Deer 2-7pm New Deer Hall, Fordyce Terrace AB53 6WE
- 19 April - Turriff 2 - 7pm Baden Powell Centre, Baden Powell Road AB53 6WE
- 20 April - Keith 2-7pm Longmore Community Hall, Longmore Road, AB55 5ET
- 21 April - Huntly 2-7pm Stewarts Hall, 15-17 Gordon St, AB54 8AJ
- 24 April - Elgin 2-7pm UHI Moray College, Moray St, IV30 1JJ
- 25 April - Forres 2-7pm Forres Town Hall, High Street, IV36 1PB
- 26 April - Inverness 2-7pm Kingsmill Hotel, Culcabock Road, IV42 3LP
- 27 April - Beaully 12-7pm Phipps Hall, Station Road, IV4 7EH

If you have any questions, please contact the Community Liaison Manager:

Ryan Davidson
SSEN Transmission
1 Waterloo Street
Glasgow G2 6AY
ryan.davidson@sse.com
+44 (0)7901 133 919

Find out more and register for project updates, visit the project website by scanning the QR code, or use the following URL:

<https://www.ssen-transmission.co.uk/projects/project-map/beaully-blackhillock-new-deer-peterhead-400kv/>

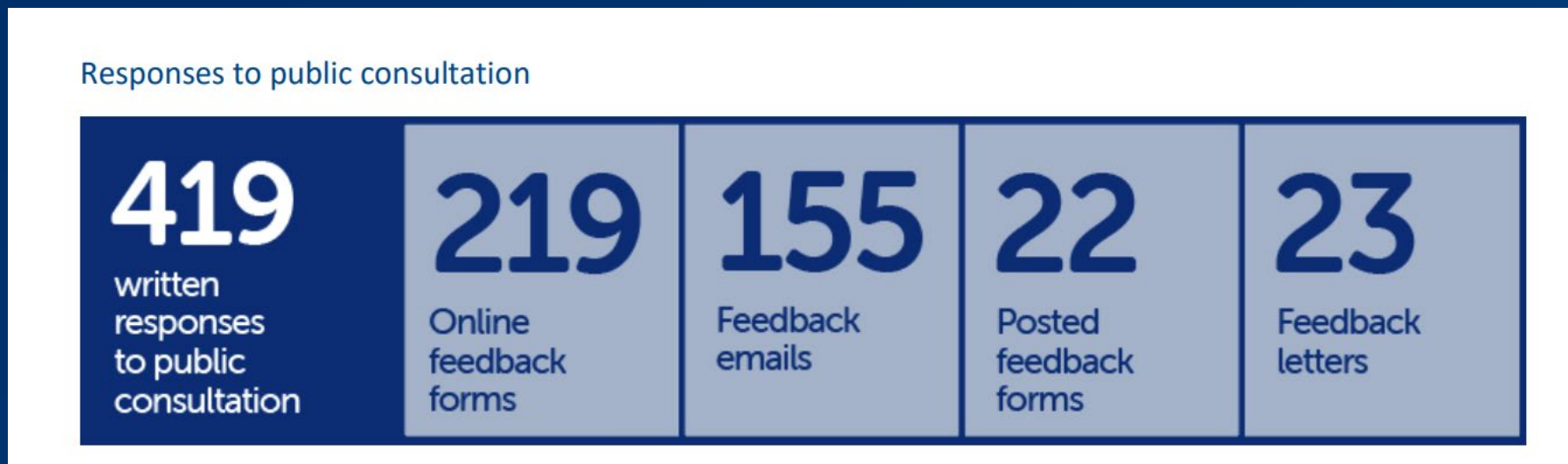


SSEN Community



@SSETransmission

Overview of feedback



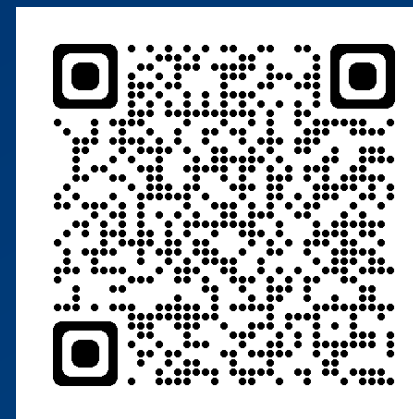
We received a total of 419 pieces of feedback via email, letter and online form.

8 statutory consultees and 54 non-statutory consultees were contacted and requested to provide feedback on the proposals. Twenty-one responses were received

Overview of feedback – common themes

Across our Pathway to 2030 project consultations, we received feedback covering several common themes. The full report details Section specific feedback, however, the common themes identified were as follows:

- Project Need
- Technology Choice
- Environmental Impacts
- Socio-Economic Impacts
- Consultation Process



Scan QR code to
view Frequently
Asked Questions
from Consultation

Although some of this feedback related to topics which fell outside of the scope of our consultations, we recognise that it is important to address the points that our stakeholders took the time to raise. Therefore, Section 3 of our RoC details our responses to these common themes raised alongside links to further materials.

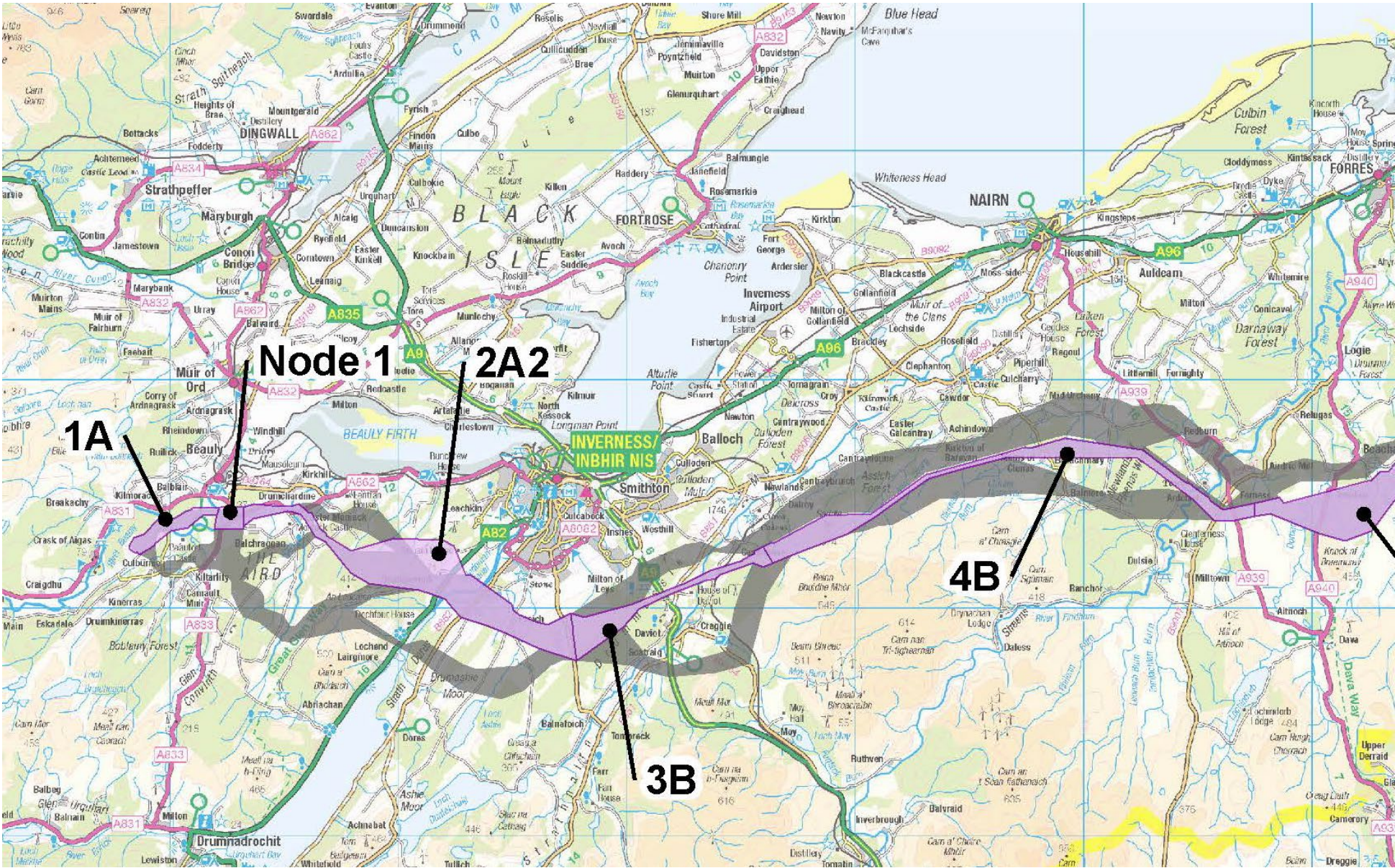
In addition, we have also developed a set of Frequently Asked Questions (FAQ).

Highland Council

Key decisions and changes

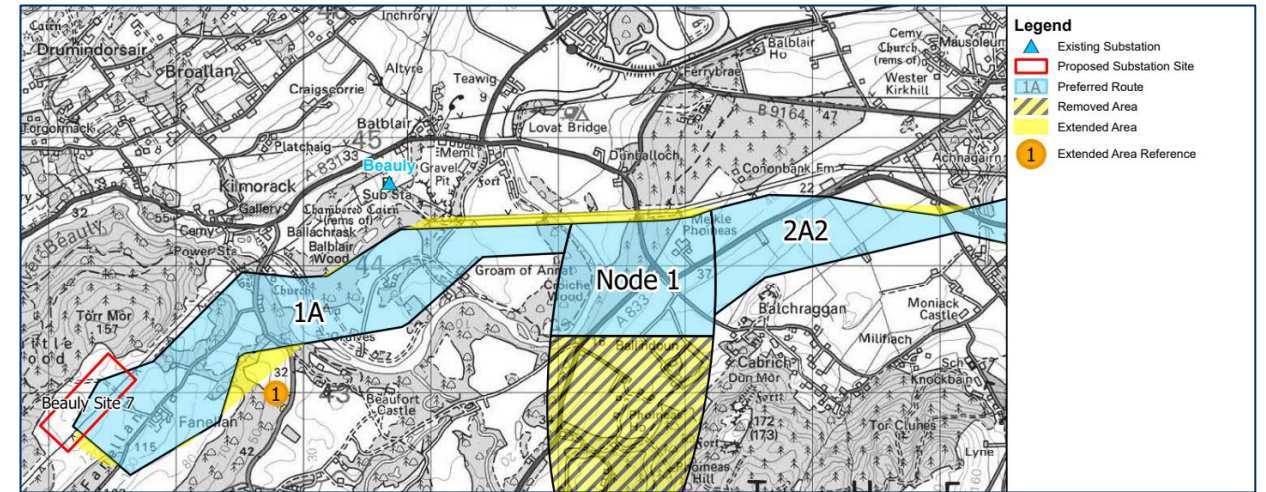
Heather Gray

Senior Environment & Consents Manager

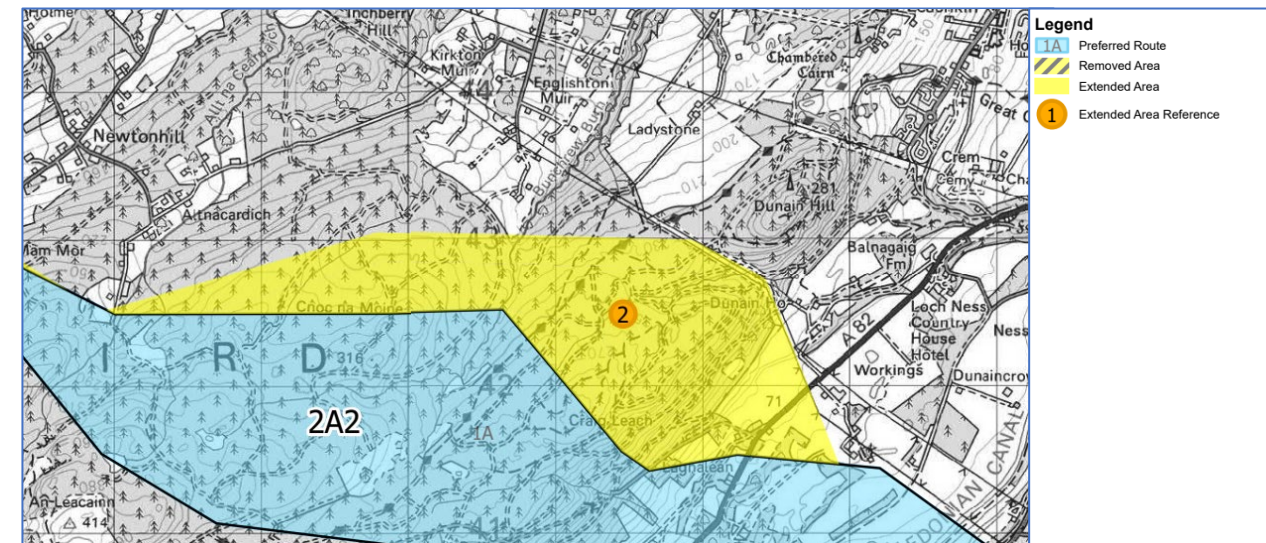


Highland Council

1. Adjustment made to Route 1A to provide the opportunity to develop alignments which avoid more woodland, whilst also crossing the Beaufort Castle Garden and Designed Landscape at the least impactful location. A narrow route expansion has also been applied to the north of Route 1A to provide opportunity to parallel as close as possible with the existing OHL.



2. Adjustment made to Route 2A2 to provide opportunity to cross the Aird at a slightly lower elevation, providing opportunity to minimise visual impact and to develop alignment options which run alongside the existing OHL.

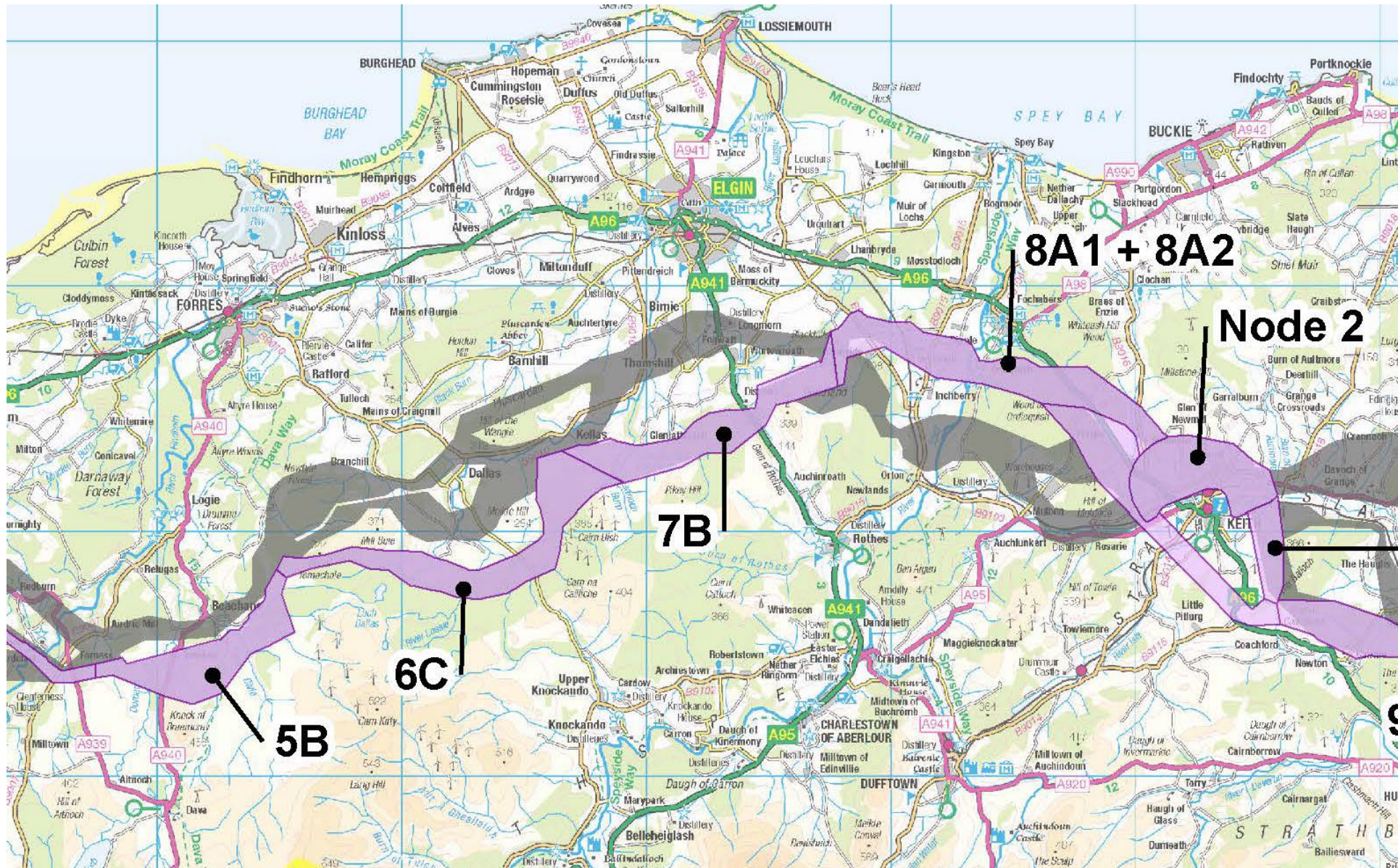


Moray Council

Key decisions and changes

Heather Gray

Senior Environment & Consents Manager

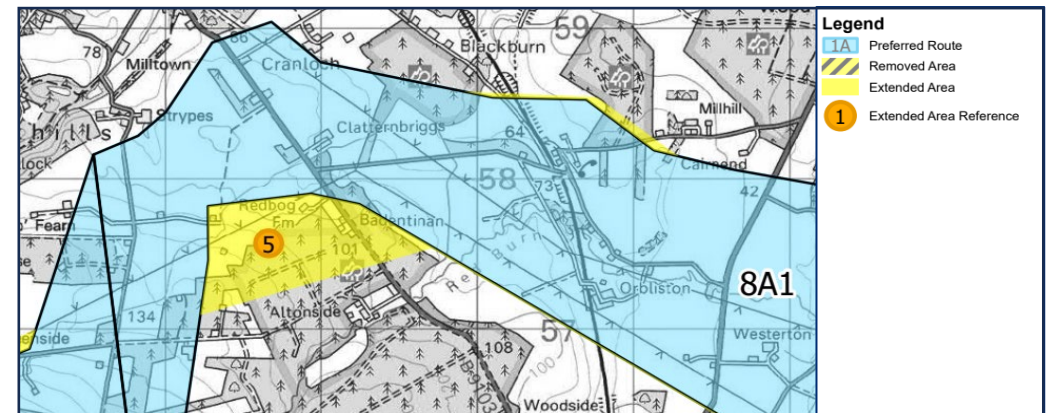
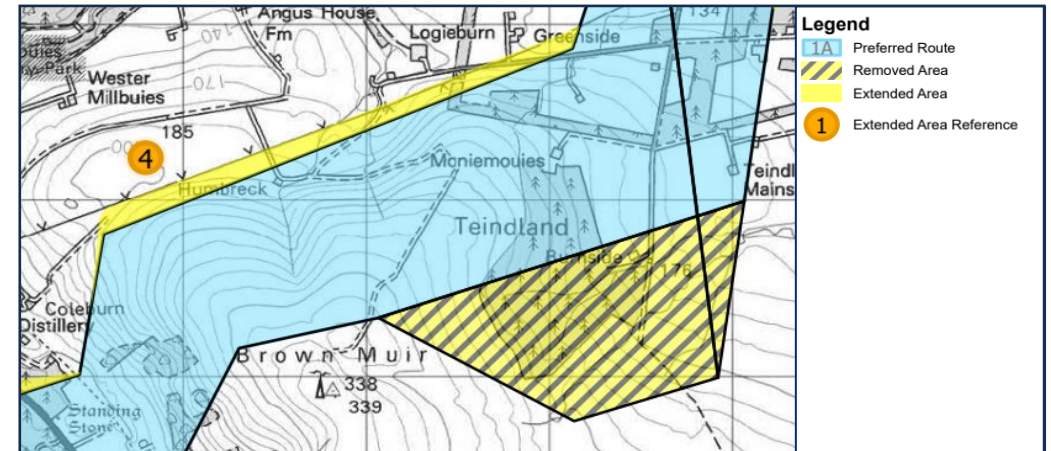
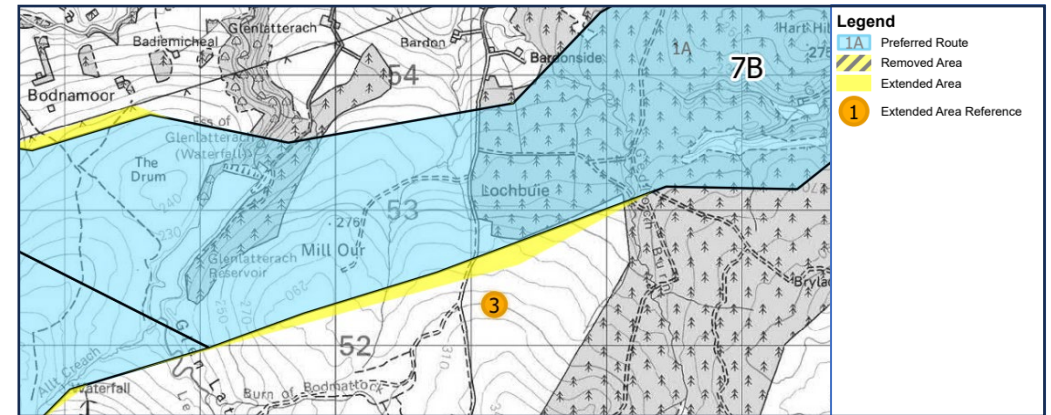


Moray Council

3 – Route 7B expanded to the south, to provide opportunity to develop alignments that minimise woodland loss by including a region outwith existing woodland.

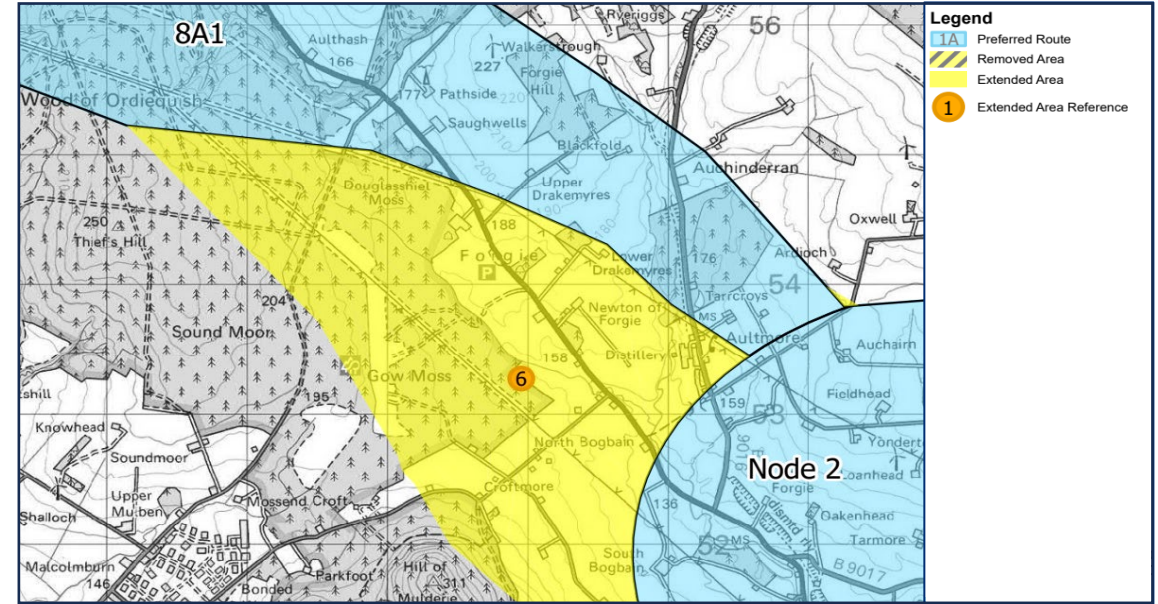
4 – Route 7B expanded to the north at eastern end near Teindland and at western end near Bodnamoor, to provide opportunity to parallel as close as possible with the existing OHL.

5 – Route 8A1 extended at western end, near Altonside, to provide opportunity to develop more direct, shorter alignments.

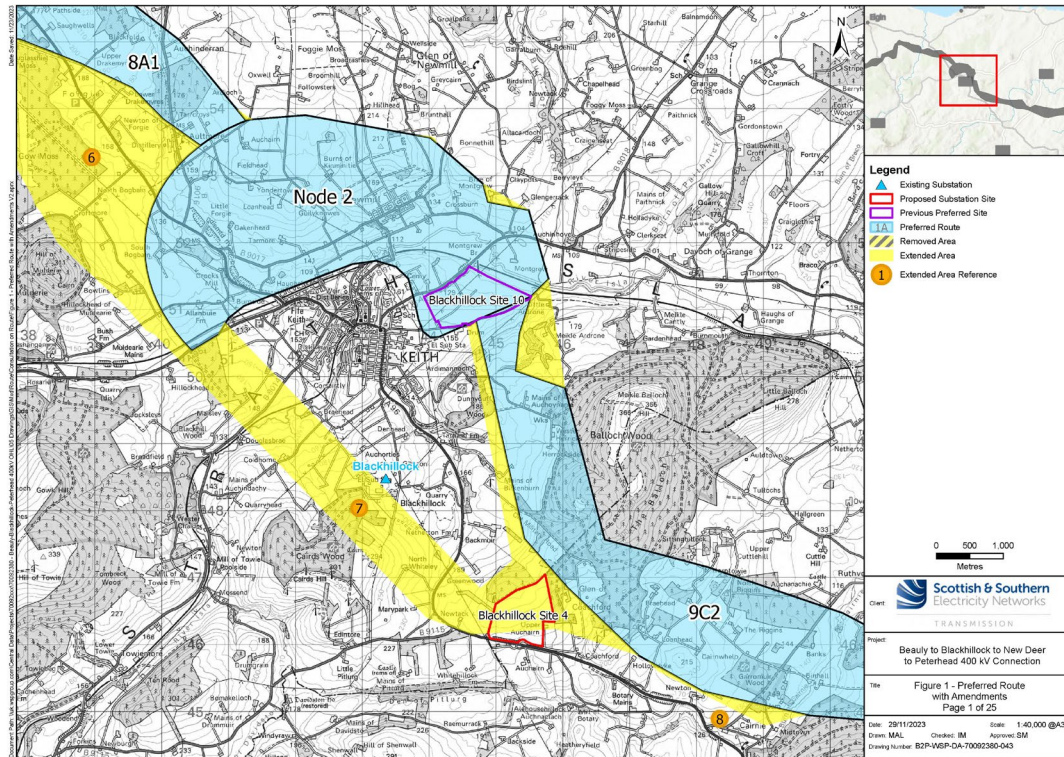


Moray Council

6 – Blackhillock 2 substation site moved from a site to the east of Keith (Site 10), to an alternative site to the southeast of Keith (Site 4). Reviewed the route options and identified the potential to route the OHL to the south of Keith as well as to the north. Route 8A1 was therefore extended within Section 8 on the approach to Keith.



7 - Opportunity for alignments options to be developed to the north and south of Keith

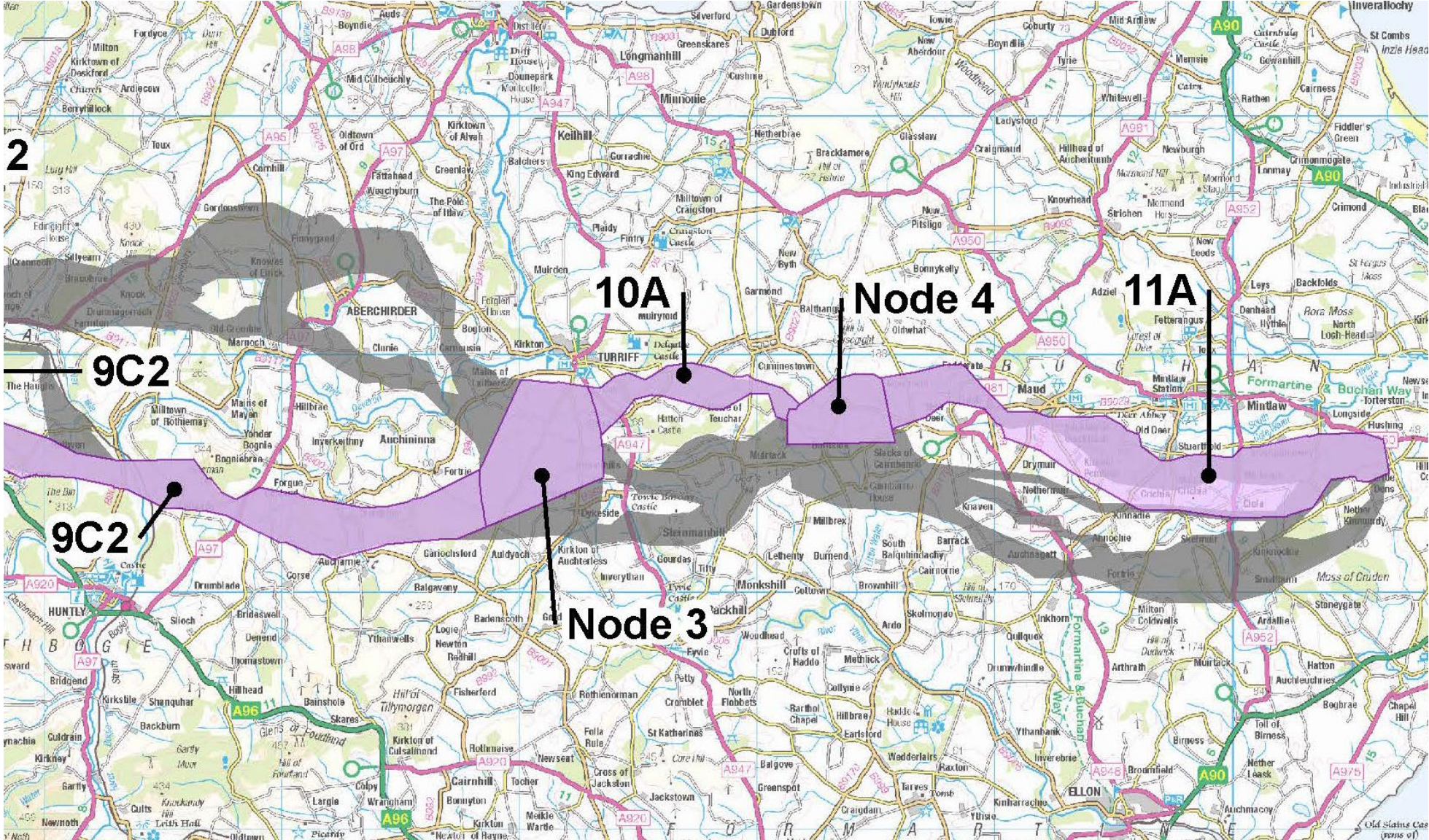


Aberdeenshire Council

Key decisions and changes

Heather Gray

Senior Environment & Consents Manager



9C2

9C2

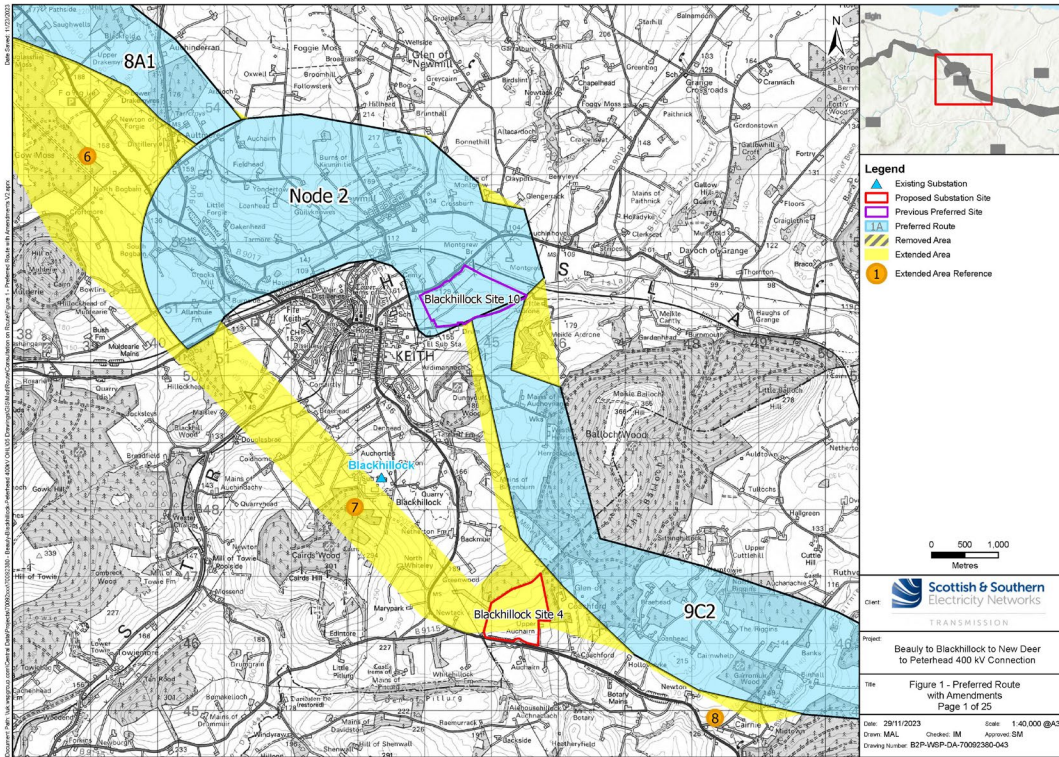
10A

Node 4

11A

Node 3

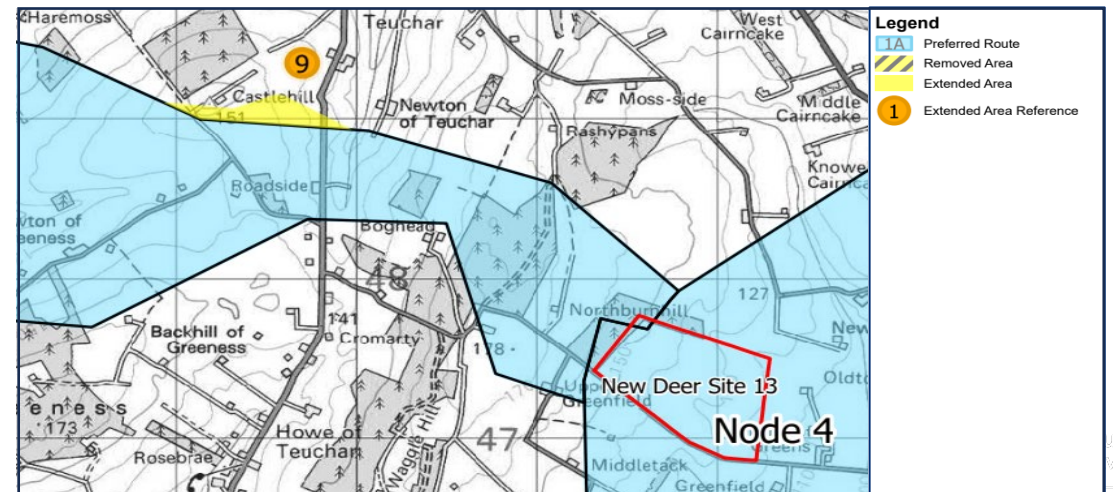
Aberdeenshire Council



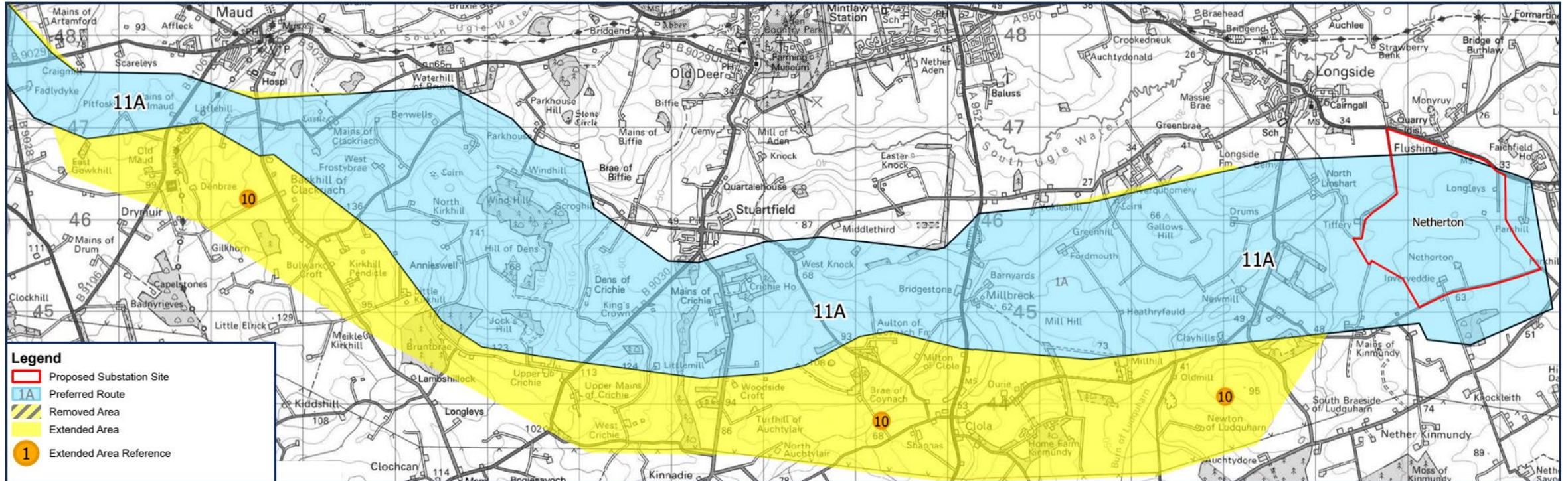
7 – Opportunity for alignments options to be developed to the north and south of Keith

8 – Route 9C2 extended near Cairnie, to the south of Garrowmuir Wood, to provides more flexibility to develop alignment options through Route 9C2, where residential properties are scattered.

9 – Small extension to Route 10A to provide more flexibility to develop alignment options into New Deer 2 site



Aberdeenshire Council



10 – Concerns raised about proximity of OHL to the settlements of Maud and Stuartfield, and also to the Hill of Dens in relation to wintering geese. Route 11A extended to the south where feasible to do so, to enable alignment options to be developed further to the south and alongside the existing OHL where feasible.

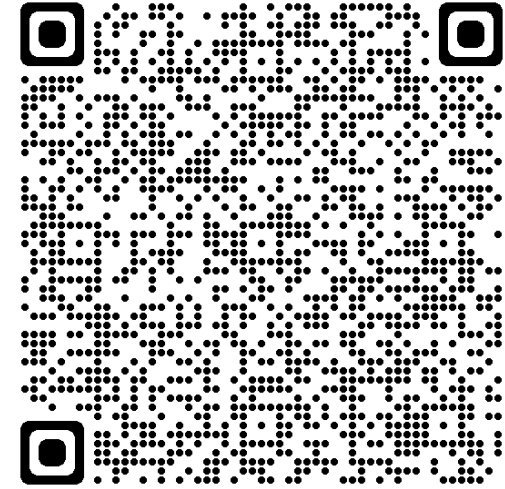


Next Steps

Next steps

Report on Consultation Engagement

- Online Webinar open to all
 - Wednesday 13 December from 14:00 – 15:30
 - Register via the QR code or visit www.ssen-transmission.co.uk and click on ‘events’



Next Consultation Events

In Early 2024, we will hold our next public consultation events regarding our proposals following further development.

We will also hold the first formal Pre-Application Consultation (PAC) events for the substations, following the statutory requirements of the planning process. At this event we will present the likely extent, layout and appearance of the substations, and give stakeholders the opportunity to comment on our proposals. This event will be followed by a second PAC event, where we will present our analysis of the consultation feedback and explain how that has informed our final design and proposals that will be the focus of our subsequent planning application.

Project timeline



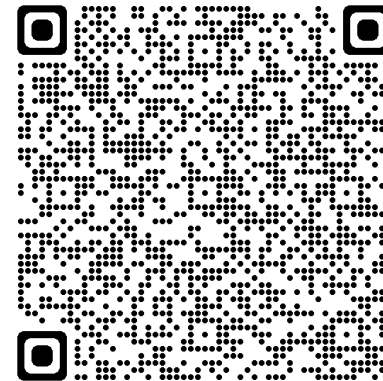


Questions

Useful links

For further information on the Beauly to Blackhillock to New Deer to Peterhead 400kV OHL projects, please see the links below.

Scan this QR code to read the Report on Consultation in full.



www.ssen-transmission.co.uk/beauly-blackhillock-new-deer-peterhead-400kv



You can contact us at
bbnp@sse.com

