

# Report on Consultation

## *Kintore to Tealing 400kV OHL*

August 2024



# Welcome and Introductions

Thank you for joining our webinar session this evening.

SSEN Transmission representatives from the project team will provide an overview of the Report on Consultation document and detail next steps in the development of the project.

There will be an opportunity to ask questions at the end of the presentation.

# Agenda

1. Welcome and introductions
2. A Pathway to 2030
3. What is a Report on Consultation?
4. Consultation events overview
5. Overview of feedback
6. Kintore to Tealing OHL– key decisions
7. Next steps
8. Questions

# A Pathway to 2030

Calum Grant  
Senior Development Project Manager

# A Pathway to 2030

- Our 'Pathway to 2030' projects are part of a **major upgrade of the electricity transmission network** across Great Britain.
- We are **investing over £20bn** in the north of Scotland, this decade.
- Upgrading our grid is critical for enabling the **delivery of UK and Scottish Government clean energy and decarbonisation ambitions.**
- Scotland has a leading role to play in **ensuring energy security** and delivering **homegrown low carbon electricity.**

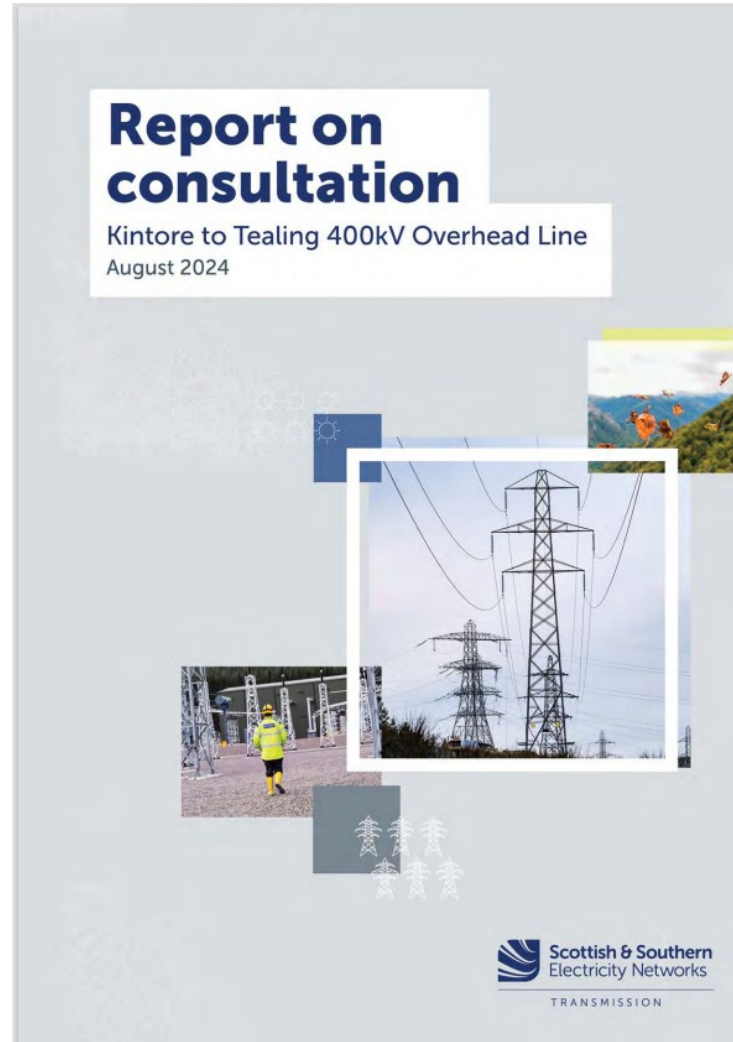


# What is a Report on Consultation?

# Report on Consultation

## What is the Report on Consultation (RoC)?

- Provides information on the consultation process.
- Identifies who we consulted with.
- Documents the feedback received and SSEN Transmission's response:
  - Common Themes and FAQs
  - Project Specific Feedback
  - The project specific feedback was responded to under the three themes:
    - Community Impact
    - Environmental Impact
    - Economic Impact
- Confirms the proposed routes being taken forward to the next stage of development following consideration of consultation feedback.



## Why and When do we publish RoCs?

- RoCs are published once all consultation feedback has been analysed and the options have been reviewed.
- Depending on the size of the project this can be upwards of 6 weeks.
- For the March to April 2024 consultation on additional route options, the analysis, route reviews and writing the RoC reports has taken 16 weeks from the end of the consultation period to publication.
- RoCs provide stakeholders with the routes being taken forward to the next stage of development which is the alignment stage.

# Our consultation process

Louise Anderson

Lead Community Liaison Manager



# Consultation Events Overview

- Events took place between 5 to 21 March 2024.
- Promoted via local and regional newspapers, SSEN Transmissions social media channels and webpage.
- Postcard invites sent to over 188,000 homes and businesses.
- In total, 10 events were held with over 1,900 attendees.
- Pre-consultation webinar for Community Councils.
- The feedback period was open between 20 February and 30 April 2024.
- 1,610 pieces of feedback received via email, mail (letter/feedback form) and online feedback form.



## Kintore to Tealing 400kV Projects

### Pre-application consultation events

We are holding statutory pre-application consultation events for our proposed substations; Hurlie in Fetteresso Forest and Tealing (Emmock). The pre-application process is a key first step in the Town and Country planning process for national planning applications.

During our drop-in events you will be able to view further information about our proposed substation sites, meet the team, ask questions and share feedback ahead of our second public events. We will also be consulting on new routes proposed following the publication of our Report on Consultation in December 2023 as well as the sections of existing overhead line that require to be upgraded between Alyth to Tealing and Tealing to Westfield.

The overhead line reconductor events will be held on:	The substation and new overhead line events will be held on:	
<b>Monday 4 March, 2-7pm</b> Errol Village Hall, Errol	<b>Tuesday 5 March, 2-7pm</b> Memus Community Hall, Memus	<b>Thursday 14 March, 2-7pm</b> Dickson Hall, Laurencekirk
<b>Tuesday 5 March, 2-7pm</b> Tayside Institute Community Centre, Newburgh	<b>Wednesday 6 March, 2-7pm</b> Reid Hall, Forfar	<b>Tuesday 19 March, 2-7pm</b> Drumlithie Village Hall, Drumlithie
<b>Wednesday 6 March, 2-7pm</b> Alyth Town Hall, Alyth	<b>Thursday 7 March, 2-7pm</b> Tealing Village Hall, Tealing	<b>Wednesday 20 March, 2-7pm</b> Drumoak Bowling Club, Drumoak
<b>Thursday 7 March, 2-7pm</b> Tealing Village Hall, Tealing	<b>Tuesday 12 March, 2-7pm</b> Brechin City Hall, Brechin	<b>Thursday 21 March, 2-7pm</b> Auchenblae Village Hall, Auchenblae
	<b>Wednesday 13 March, 2-7pm</b> Echt Village Hall, Echt	

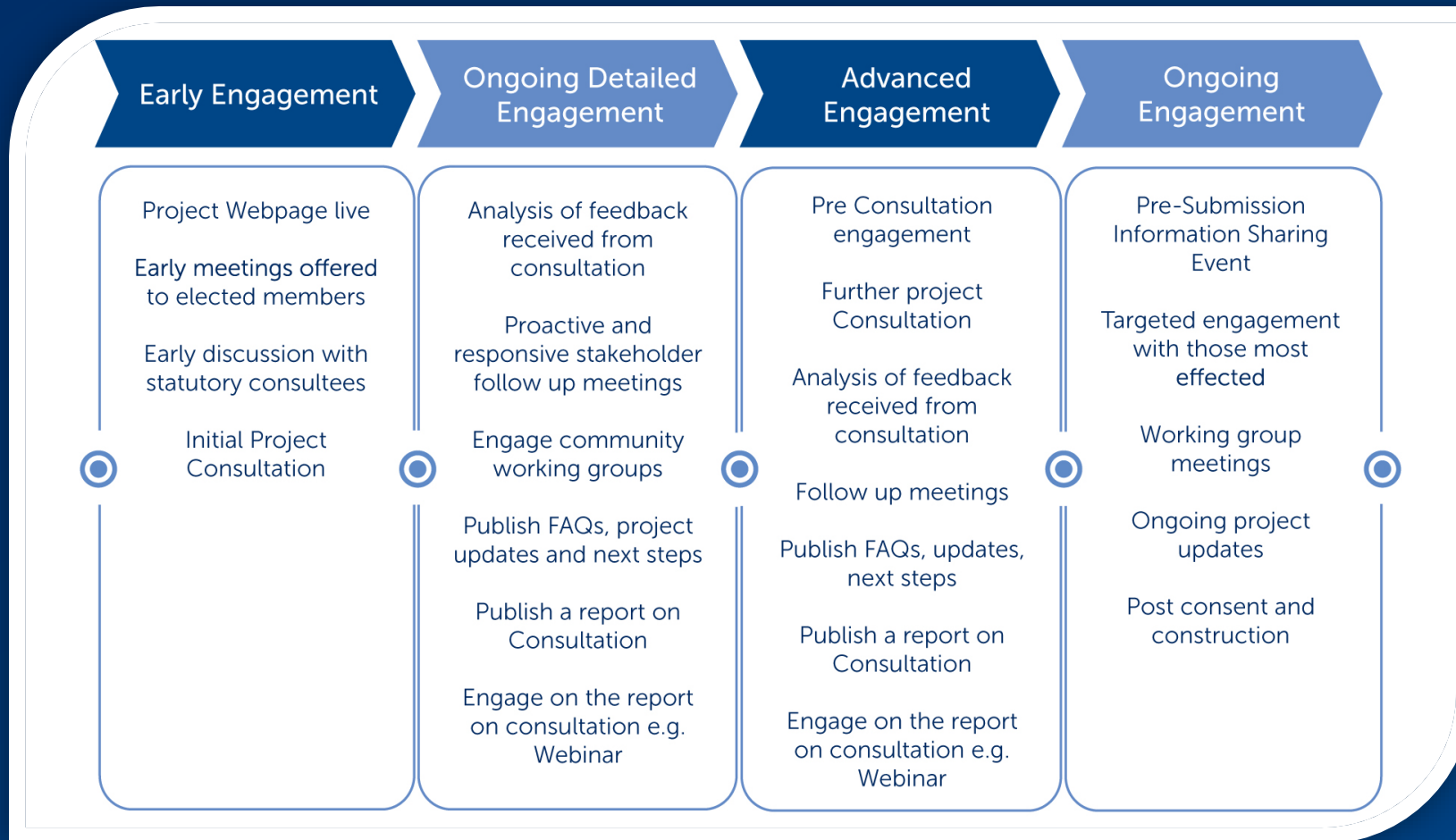
If you have any questions, please do not hesitate to contact our Community Liaison Manager:

Rhiannon Merritt  
SSEN Transmission, 10 Henderson Road, Inverness, IV1 1SN  
Email: [tkup@sse.com](mailto:tkup@sse.com)  
@sentransmission @SSETransmission

Hurlie 400kV:  Tealing 400kV: 

Find out more and register for project updates, visit the project website by scanning the QR code, or use the following URLs:  
<https://bit.ly/3HFQOw1>  
<https://bit.ly/48W3BX7>

# Engagement process



# Key Themes and Concerns

## Landscape and Visual

*Concerns:* Adverse impacts of the proposed OHL on landscape character, landscape designations and views.

## Construction Impacts

*Concerns:* Roads and access, noise and disturbance to residents as well as increased levels of stress, dust and pollution.

## Agricultural Land and Biosecurity

*Concerns:* Impact of the project on farmers' livelihoods due to prime agricultural land being used for the towers and spread of disease by people and vehicle movements, particularly potato cyst nematode (PCN) during the construction period.

## Health

*Concerns:* Potential for the project to have adverse effects on physical and mental health.



## Community Impacts – Socio-Economic

*Concerns:* Potential for the project to have long term impacts on the area, for example on tourism.

## Wildlife

*Concerns:* Points were raised in relation to habitats and protected wildlife, and the need for measures to be in place to avoid harm or disturbance to them, particularly in relation to pollution and biosecurity risks.

## Project Need and Technology Choice

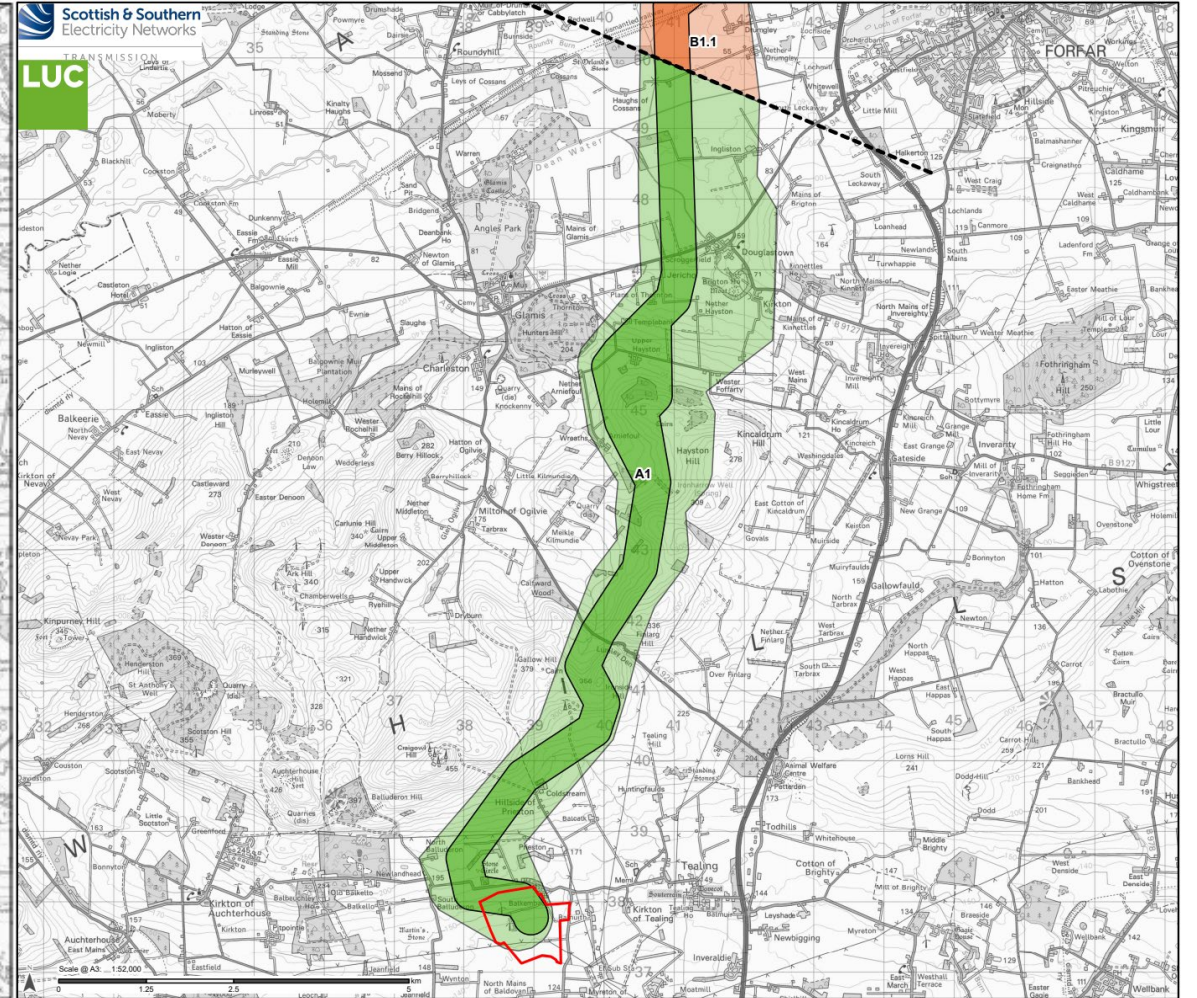
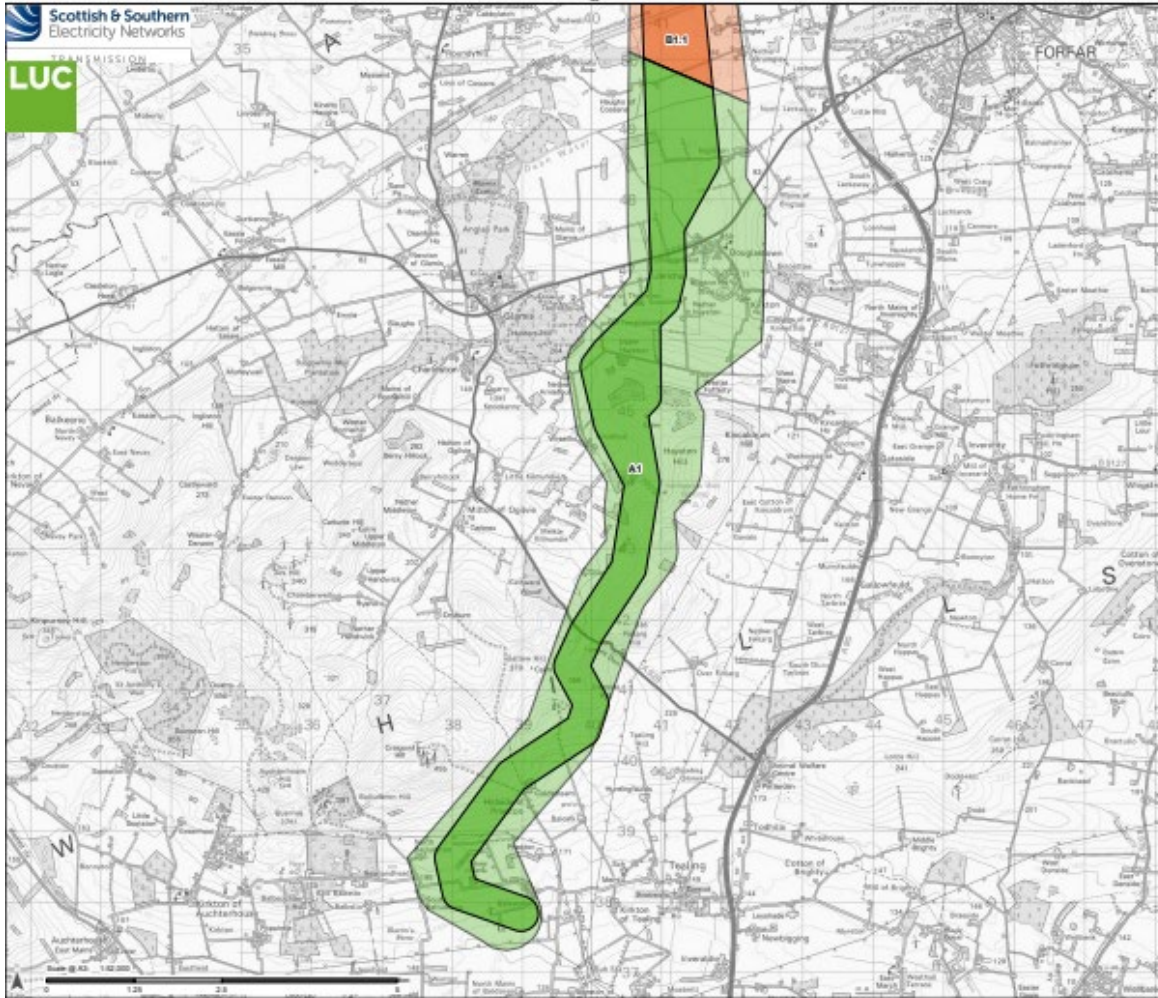
*Concerns:* Questions regarding the need for the project and whether the project could be undergrounded or be offshore.

## Cumulative Impacts

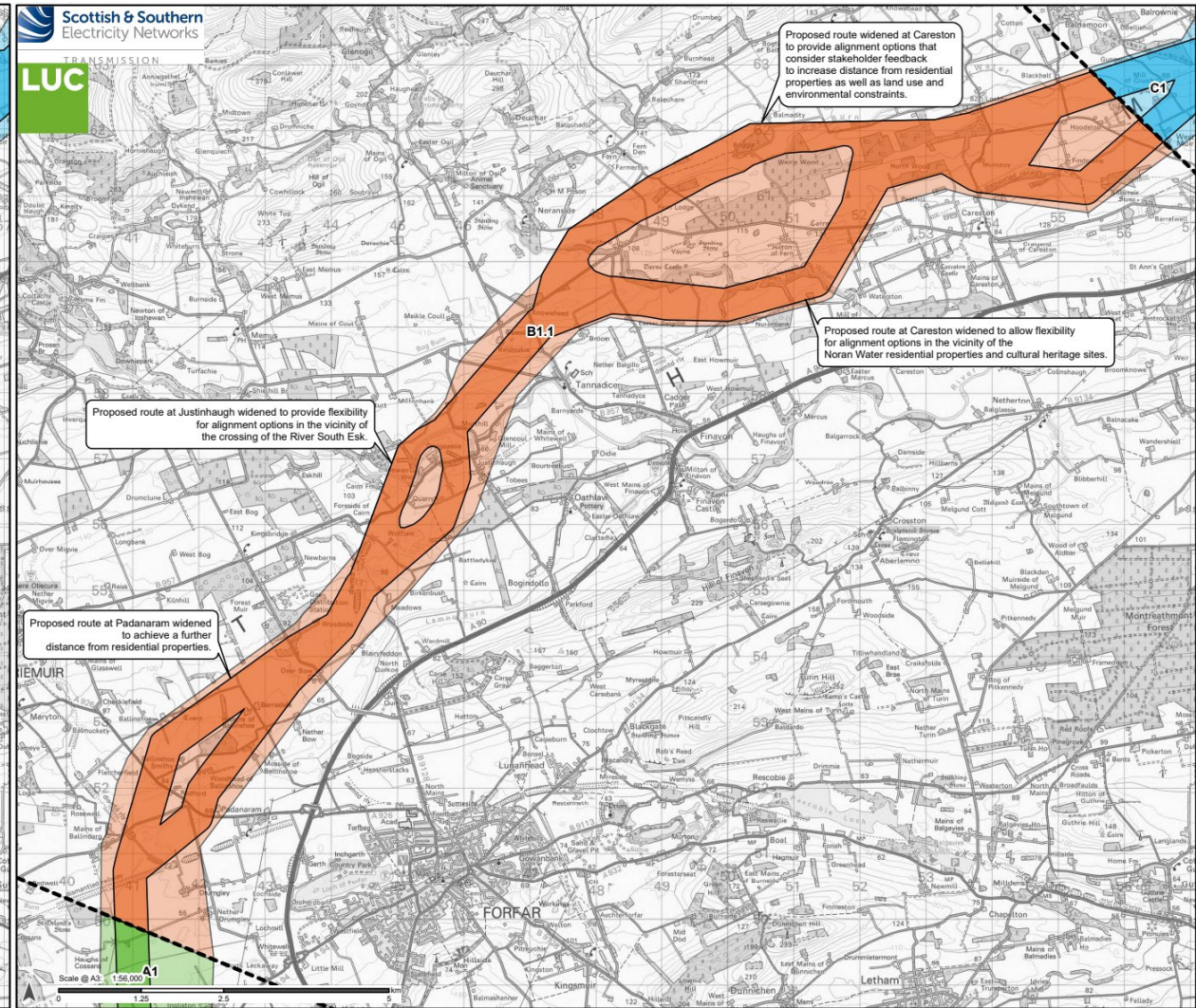
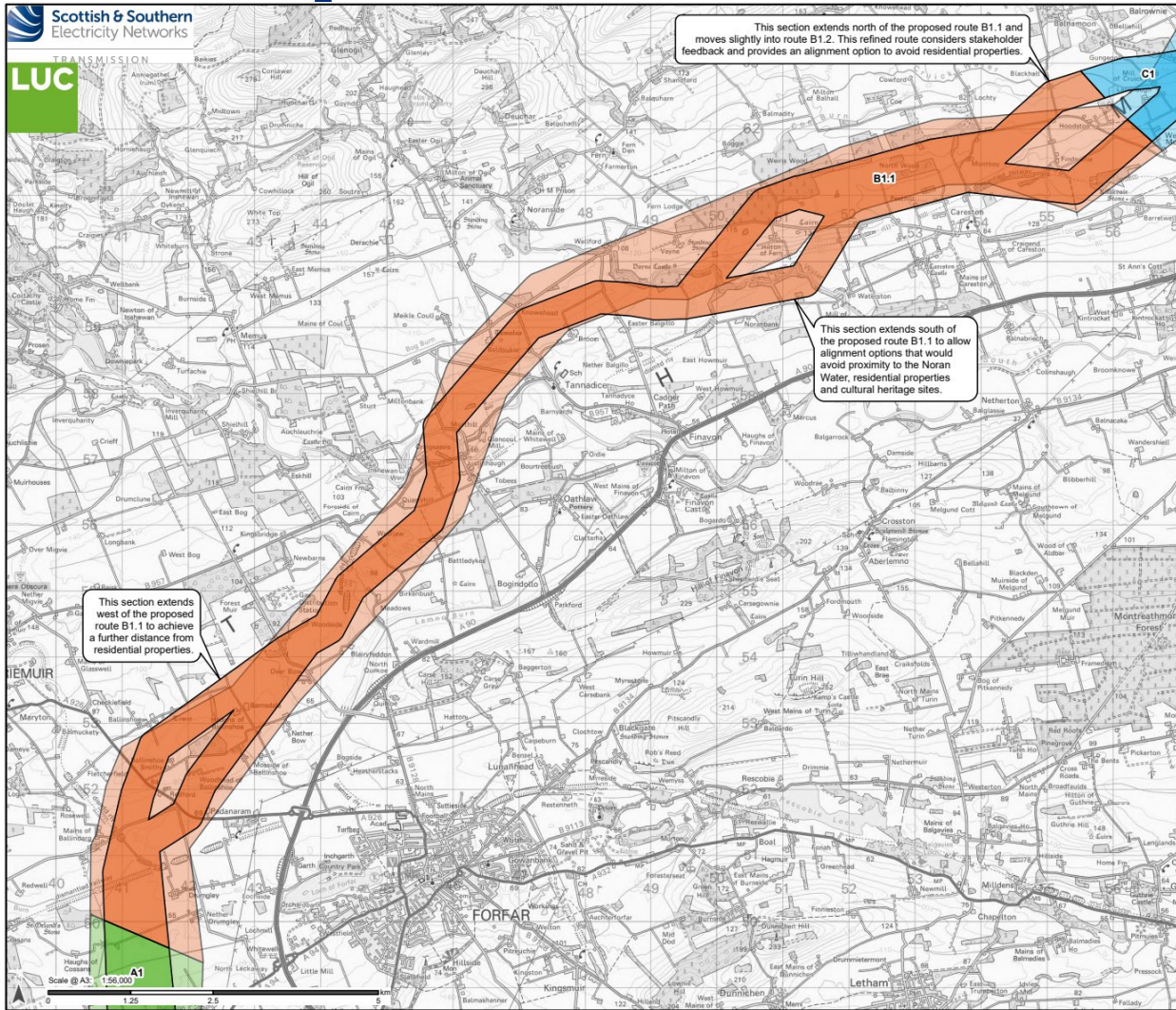
*Concerns:* The need to consider potential impacts of the Kintore to Tealing OHL together with other SSEN Transmission projects and other energy projects.

# Kintore to Tealing OHL

# Proposals for Section A – Tealing to Forfar



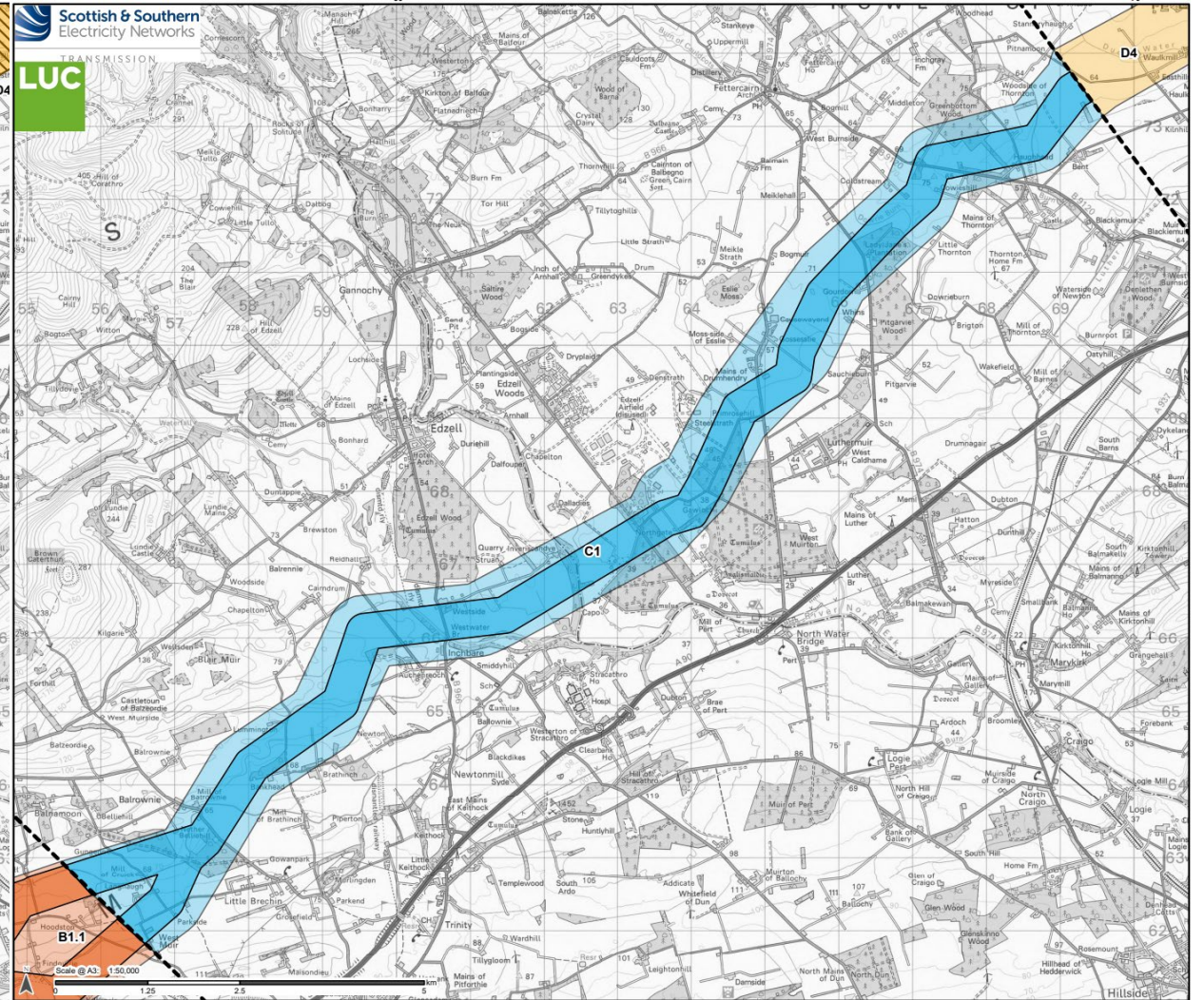
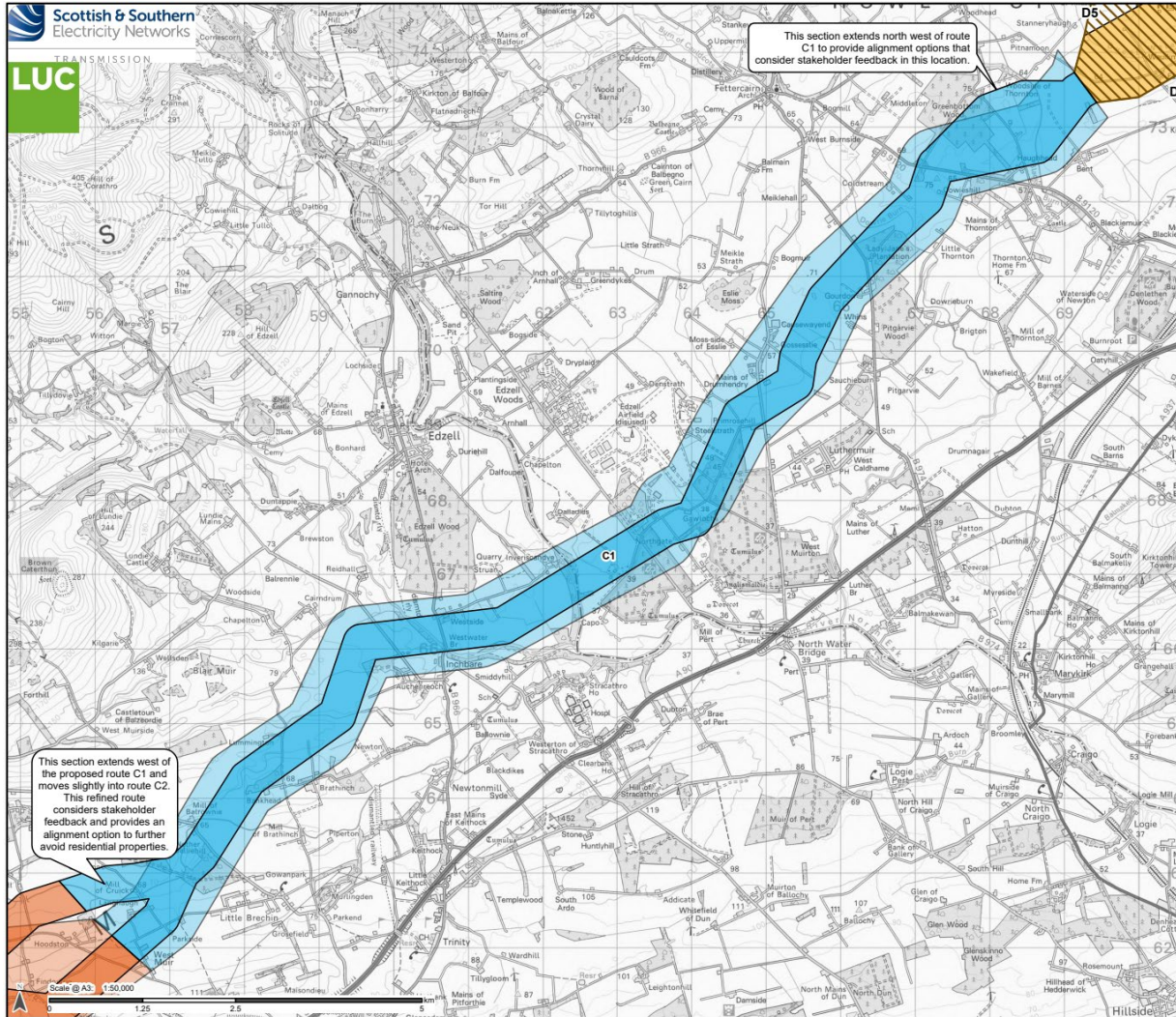
# Proposals for Section B – Forfar to Brechin



Presented in March 2024

To be taken forward to alignment consultation

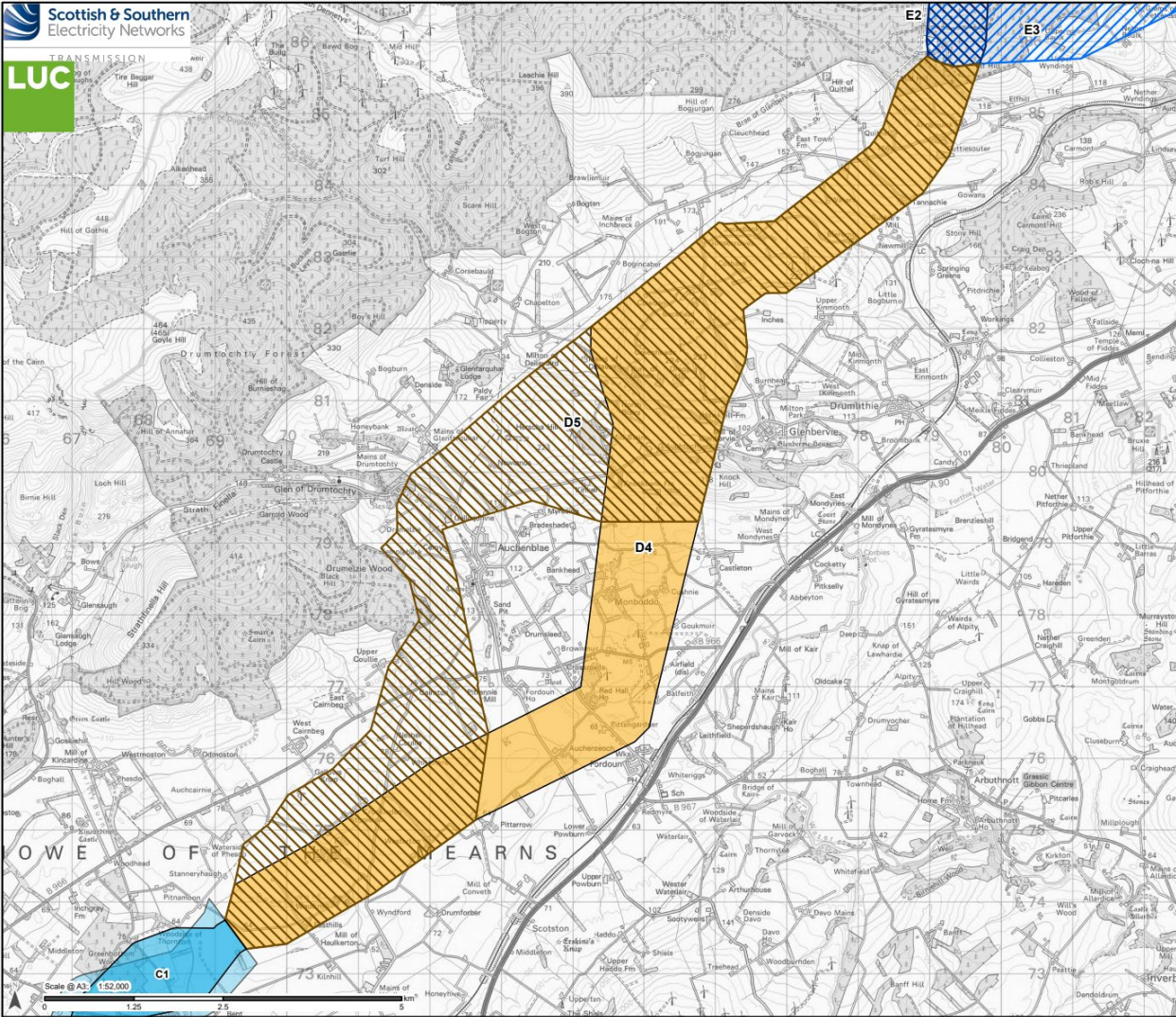
# Proposals for Section C – Brechin to Laurencekirk



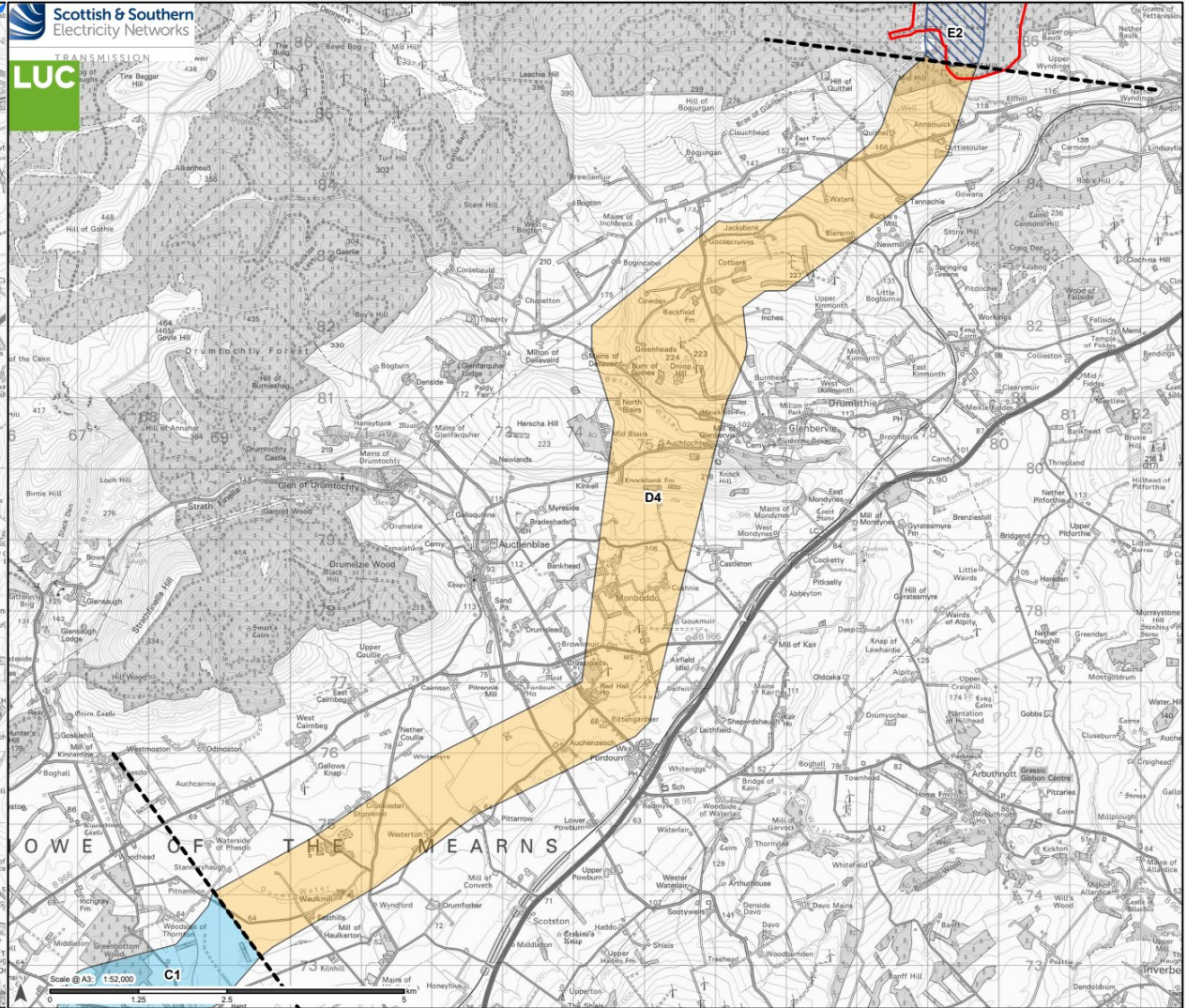
Presented in March 2024

To be taken forward to alignment consultation

# Proposals for Section D – Laurencekirk to Hurlie



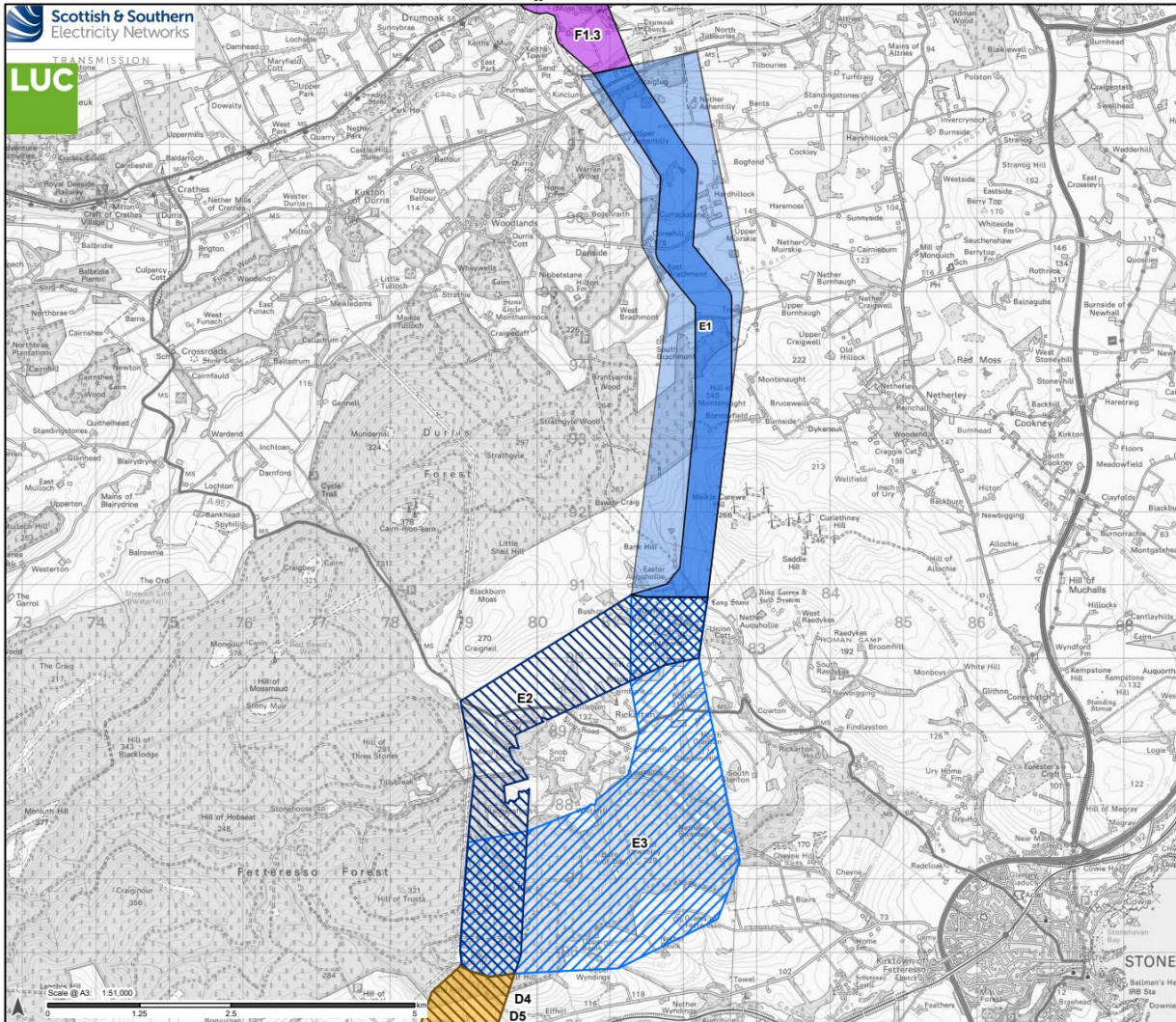
Presented in March 2024



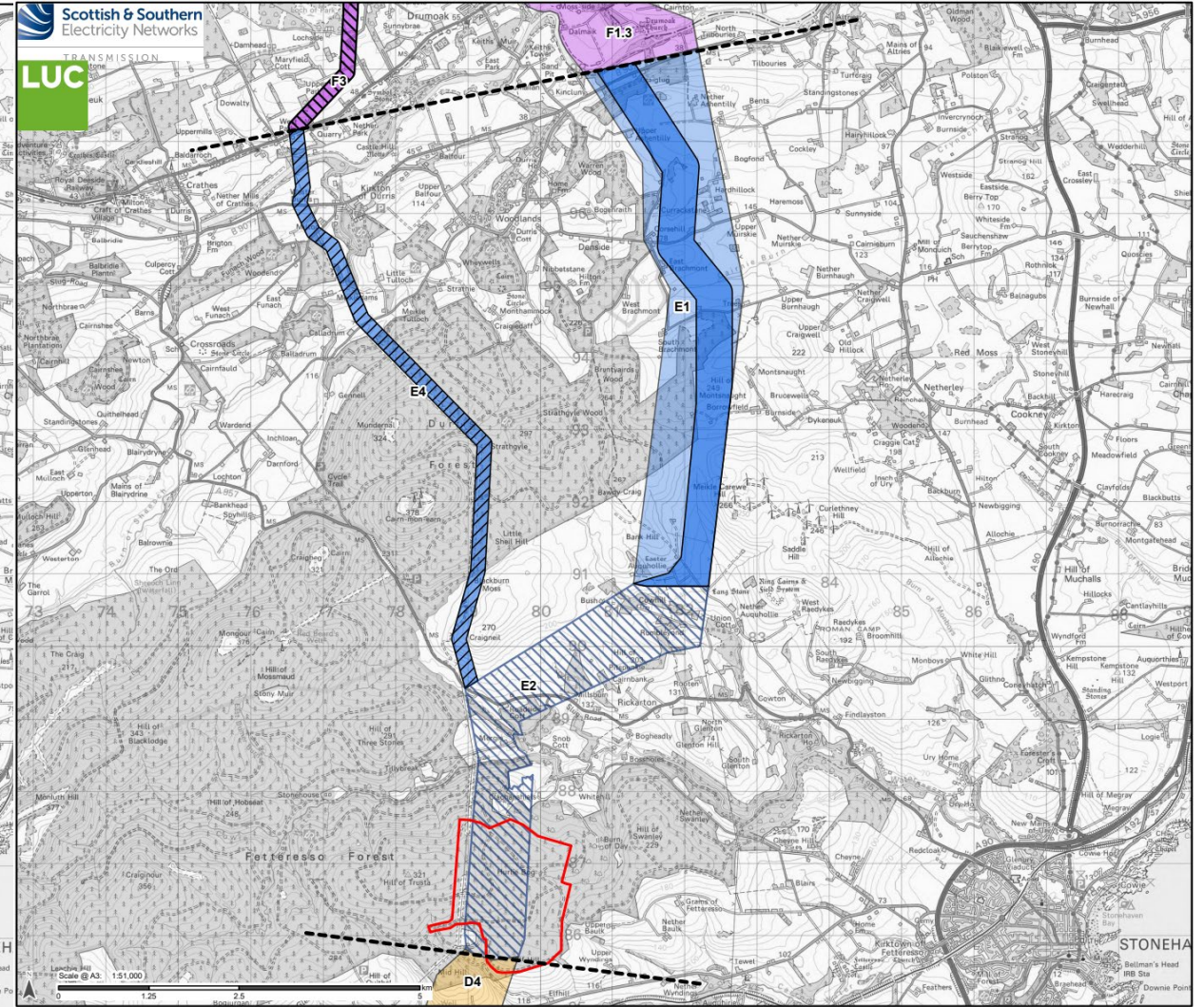
To be taken forward to alignment consultation



# Proposals for Section E – Hurlie to River Dee

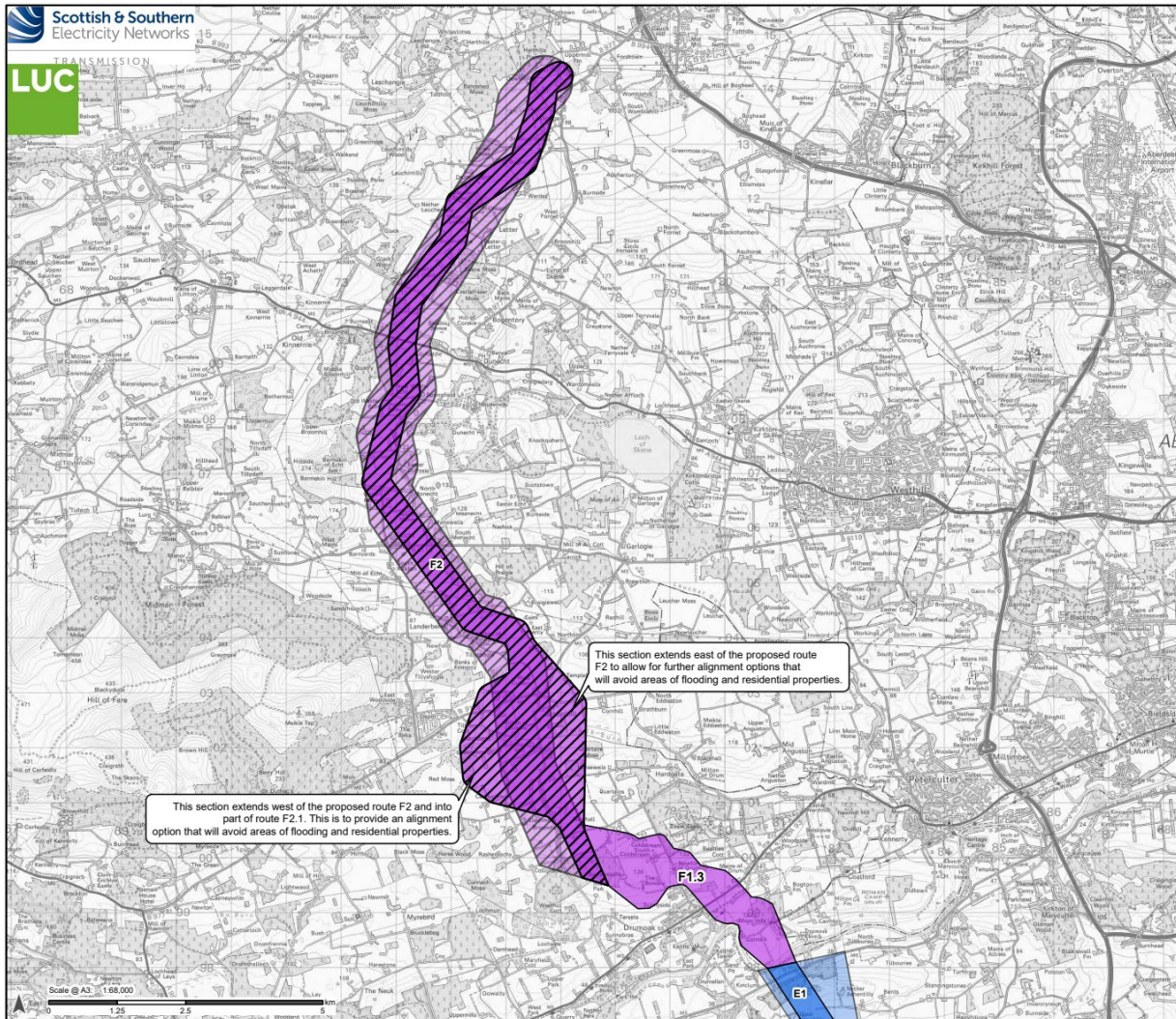


Presented in March 2024

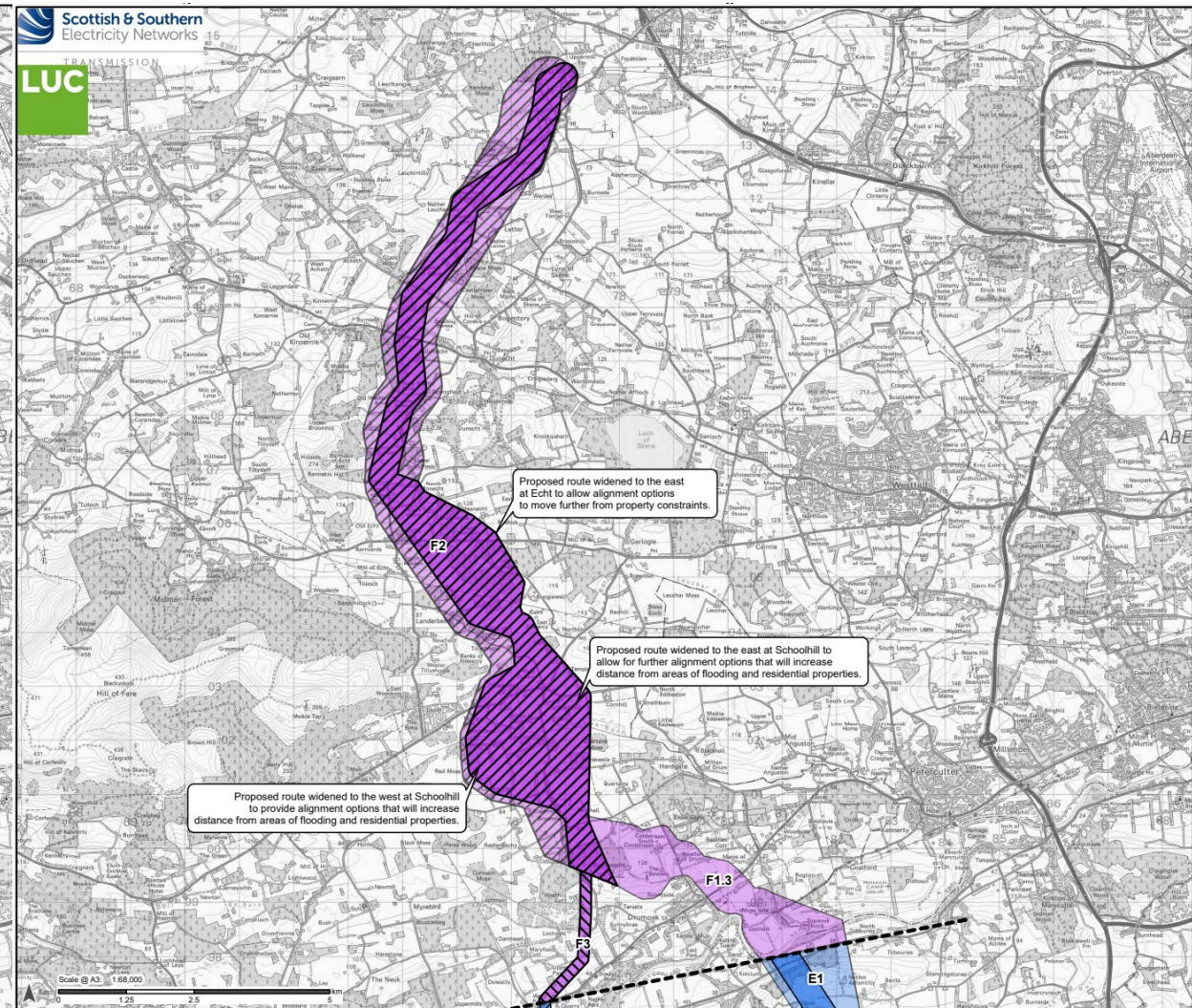


To be taken forward to alignment consultation

# Proposals for Section F – River Dee to Kintore



Presented in March 2024



To be taken forward to alignment consultation



# Next Steps

# Next steps

## Route Alignment Consultation Events

We will be consulting further with local communities and stakeholders in September and October 2024, where we will seek feedback on potential alignment options.

Consultation events begin w/c 23 September for 3 weeks and conclude on 10 October 2024.

The feedback period will remain open until 21 November 2024.

The project timeline is set out below and may change as the project continues to develop.



# Public Consultation events

Date	Time	Location
Monday 23 September	1:30pm to 6:30pm	Tealing Village Hall, Tealing
Tuesday 24 September	2pm to 7pm	Royal Hotel, Wallace Suite, Forfar
Wednesday 25 September	2pm to 7pm	Memus Hall, Memus
Thursday 26 September	2pm to 7pm	Brechin City Hall, Brechin
Monday 30 September	2pm to 7pm	Menmuir Hall, Menmuir
Tuesday 1 October	1:30pm to 6:30pm	Kintore Public Hall, Kintore
Wednesday 2 October	2pm to 7pm	Echt Hall, Echt
Thursday 3 October	2pm to 7pm	Drumoak Bowling Club, Drumoak
Monday 7 October	2pm to 7pm	Drumlithie Village Hall, Drumlithie
Tuesday 8 October	2pm to 7pm	Stonehaven Town Hall, Stonehaven
Wednesday 9 October	2pm to 7pm	Dickson Hall, Laurencekirk
Thursday 10 October	2pm to 7pm	Durriss Kirkton Hall, Durriss

# Questions?

## Useful links

For further information on our Pathway to 2030 projects, please see the links below.



Pathway to 2030 project information  
[ssen-transmission.co.uk/projects/2030-projects/](https://ssen-transmission.co.uk/projects/2030-projects/)



You can contact us at  
[TKUP@sse.com](mailto:TKUP@sse.com)

