

Key

- Preferred Alignment
- Preferred Alignment Pole Position
- Viewpoint
- ▲ Substation
- ▶ Direction of View (53.5°)

Viewpoints

- VP1. Trumpan Church Burial Ground
- VP2. Trumpan
- VP3. Dun Hallin Broch from Knockbreck School

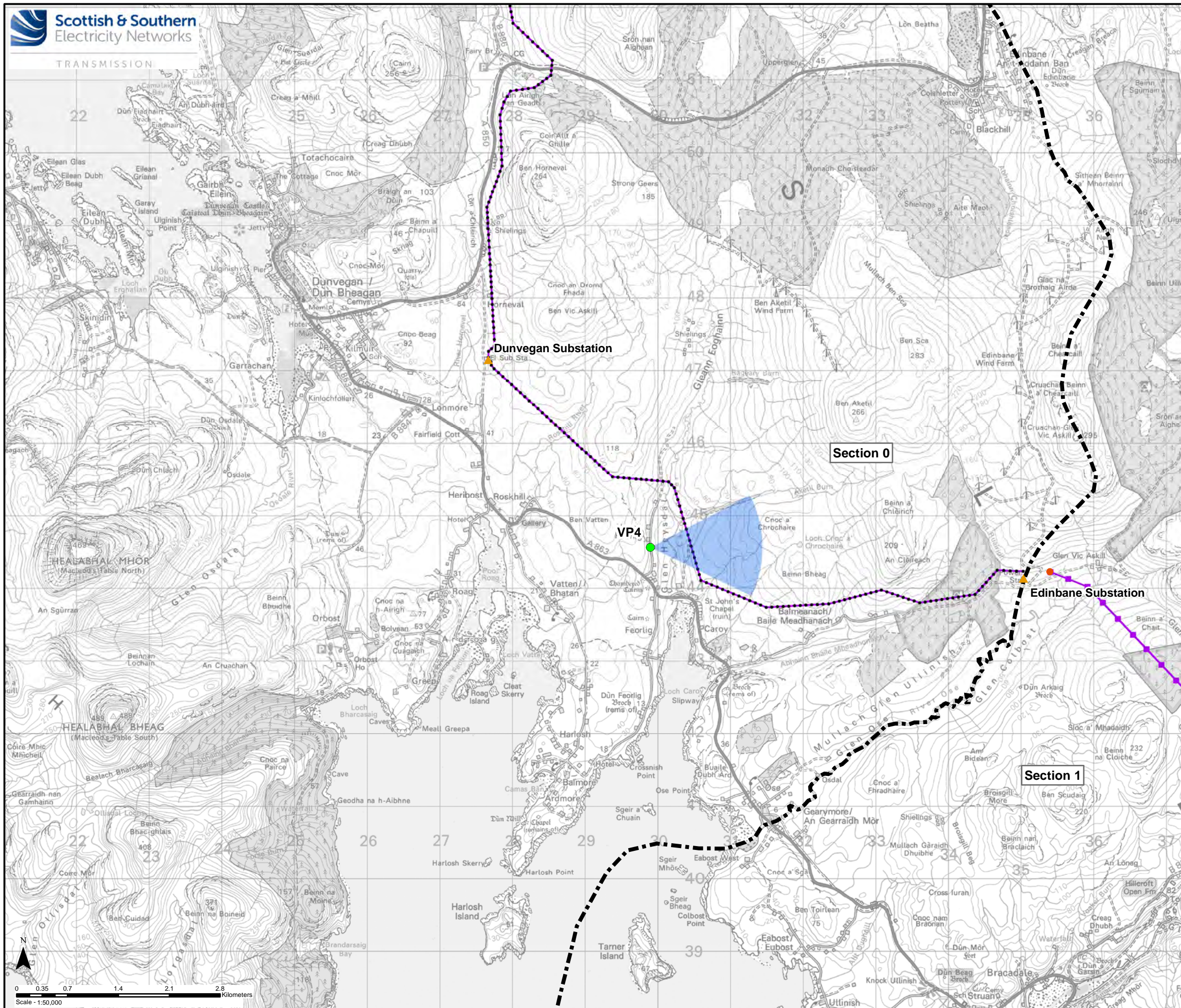
Reproduced by permission of Ordnance Survey on behalf of HMSO.
Crown copyright and database right 2021 all rights reserved.
Ordnance Survey Licence number EL273236.

Project No: LT91
Project: Skye Reinforcement Project
Consultation Document (Alignment)

Title: Figure 3.7a - Viewpoint Location Plan
Section 0

Drawn by: SK 20/09/2021

Drawing: 119026-D-CD-3.7a-1.0.0



- Key**
- Section Divider
 - Preferred
 - Preferred Alignment Pole
 - Preferred Alignment Tower Position
 - Viewpoint
 - Sealing End Compound
 - ▲ Substation
 - ▶ Direction of View (53.5°)

Viewpoints

VP4. Upper Feorlig

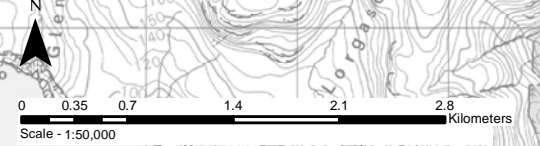
Reproduced by permission of Ordnance Survey on behalf of HMSO.
Crown copyright and database right 2021 all rights reserved.
Ordnance Survey Licence number EL273236.

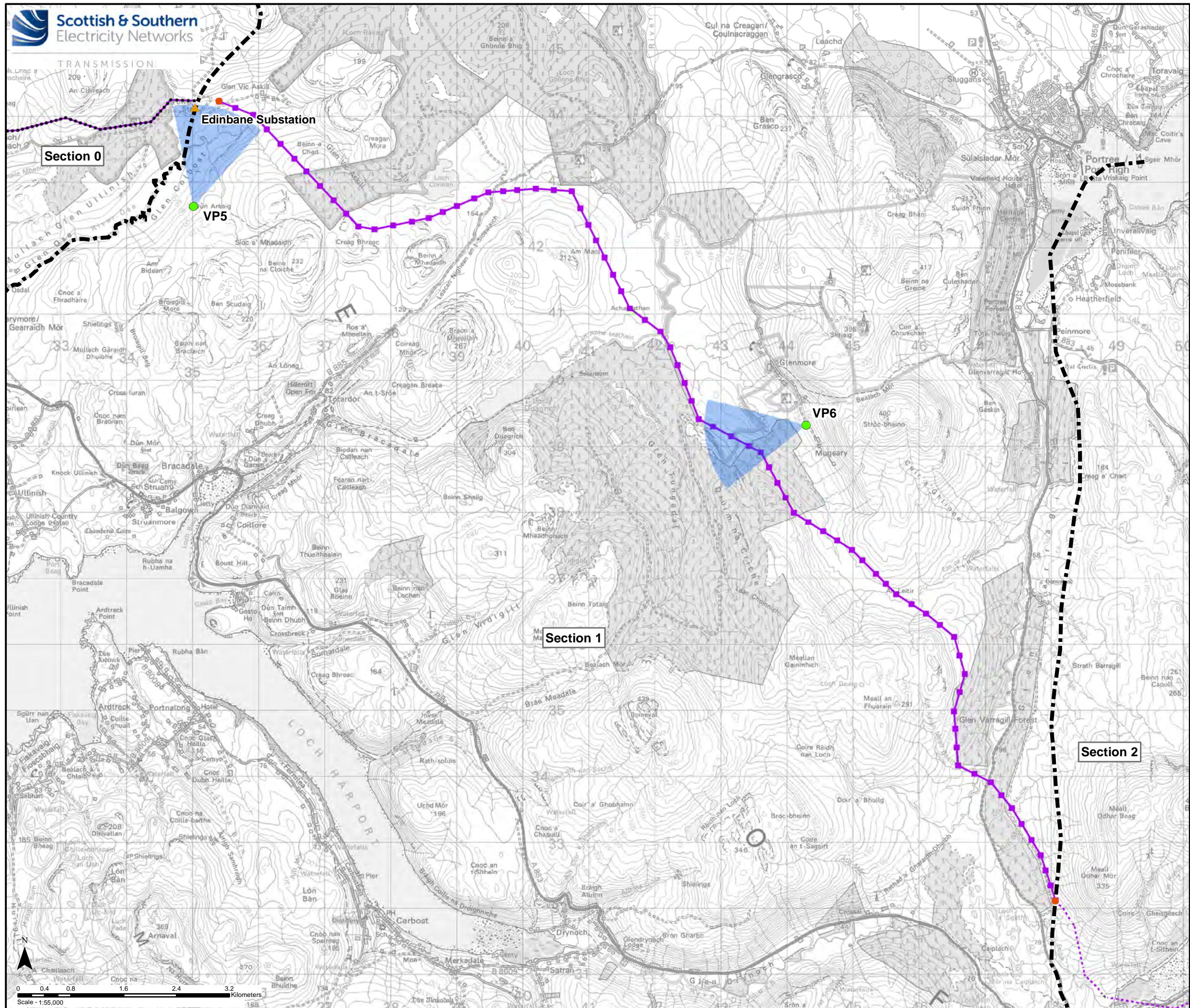
Project No: LT91
Project: Skye Reinforcement Project
Consultation Document (Alignment)

Title: Figure 3.7b - Viewpoint Location Plan
Section 0

Drawn by: SK
20/09/2021

Drawing: 119026-D-CD-3.7b-1.0.0





Key

- Section Divider
- Preferred Alignment (Overhead Line)
- - - Preferred Alignment (Underground Cable)
- Preferred Alignment Pole Position
- Preferred Alignment Tower Position
- Viewpoint
- Sealing End Compound
- ▲ Substation
- ▶ Direction of View (53.5°)

Viewpoints

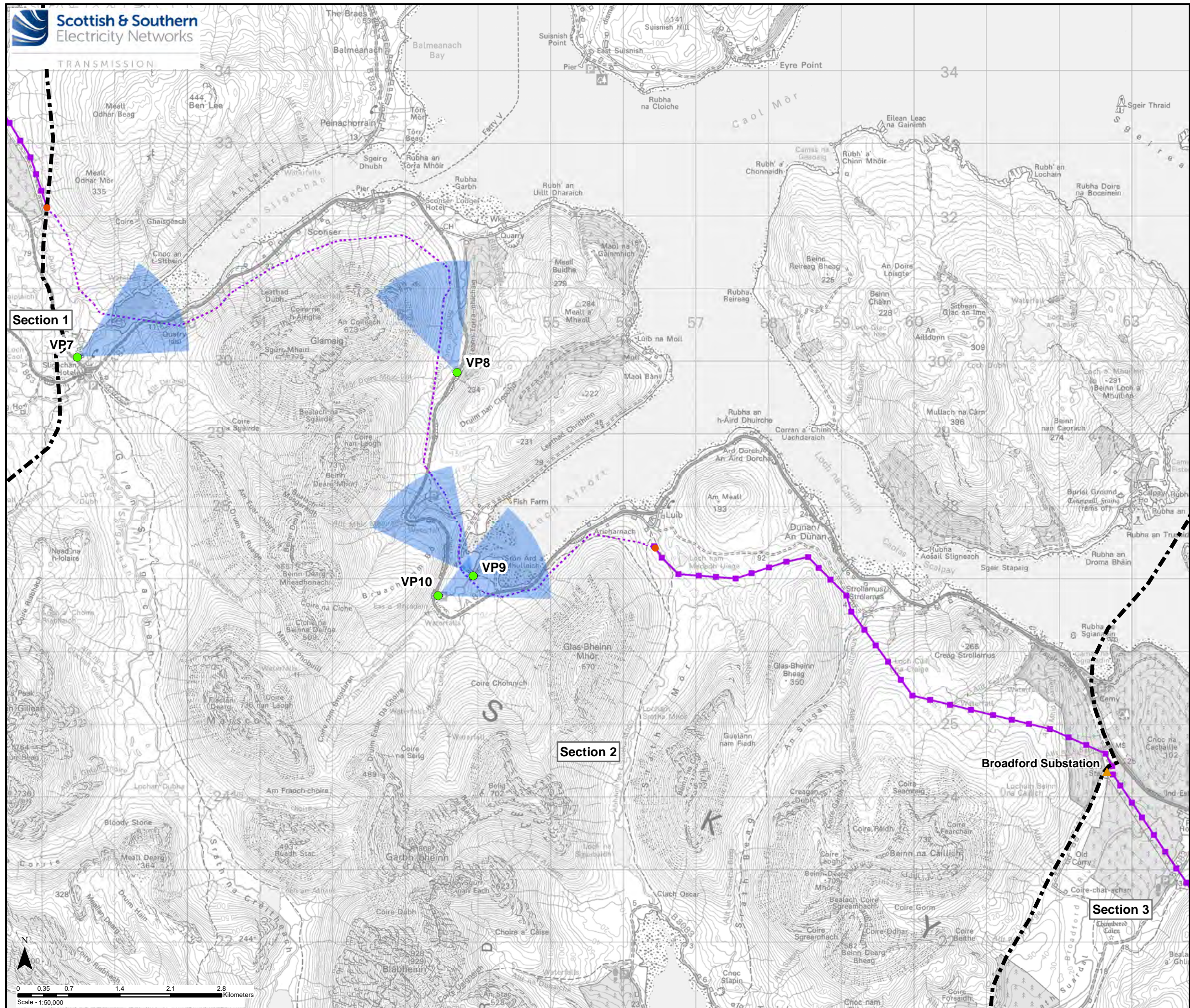
VP5. Glen Vik Askill from Dun Arkaig Broch
 VP6. Mugeary

Reproduced by permission of Ordnance Survey on behalf of HMSO.
 Crown copyright and database right 2021 all rights reserved.
 Ordnance Survey Licence number EL273236.

Project No: LT91
 Project: Skye Reinforcement Project
 Consultation Document (Alignment)

Title: Figure 3.7c - Viewpoint Location Plan
 Section 1

Drawn by: SK 20/09/2021
 Drawing: 119026-D-CD-3.7c-1.0.0



- Key**
- Section Divider
 - Preferred Alignment (Overhead Line)
 - - - Preferred Alignment (Underground Cable)
 - Preferred Alignment Tower Position
 - Viewpoint
 - Sealing End Compound
 - ▲ Substation
 - ▶ Direction of View (53.5°)

Viewpoints

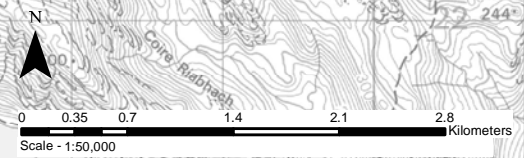
VP7. A87 at Sligachan Camp Site
 VP8. A87 in Gleann Torra-mhichaig
 VP9. Moll Minor Road near Kinloch Ainort
 VP10. A87 overlooking Loch Ainort

Section 1

Section 2

Section 3

Broadford Substation

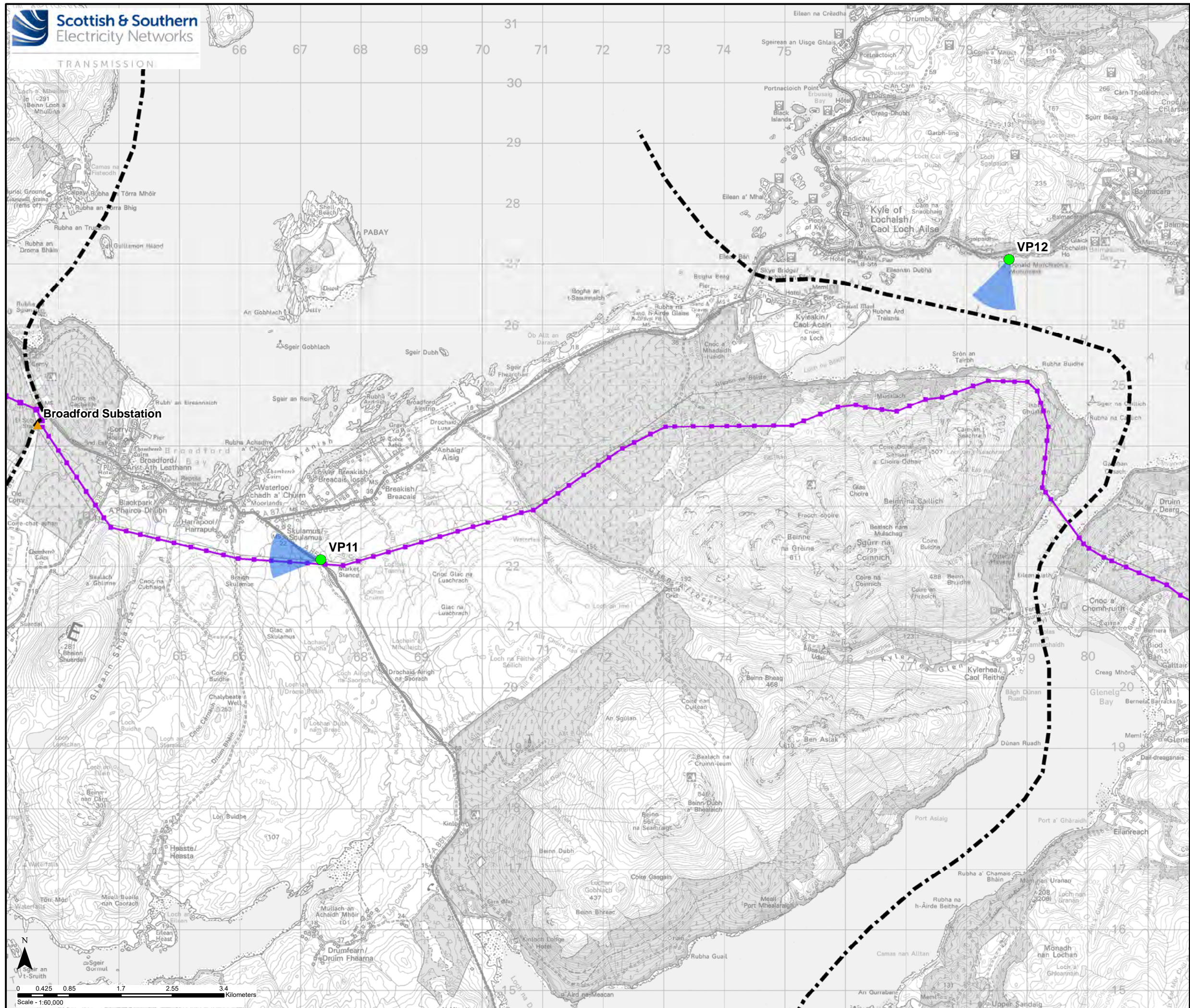


Reproduced by permission of Ordnance Survey on behalf of HMSO.
 Crown copyright and database right 2021 all rights reserved.
 Ordnance Survey Licence number EL273236.

Project No: LT91
 Project: Skye Reinforcement Project
 Consultation Document (Alignment)

Title: Figure 3.7d - Viewpoint Location Plan
 Section 2

Drawn by: SK 20/09/2021
 Drawing: 119026-D-CD-3.7d-1.0.0



Key

- Section Divider
- Preferred Alignment
- Preferred Alignment Tower Position
- Viewpoint
- ▲ Substation
- ▶ Direction of View (53.5°)

Viewpoints

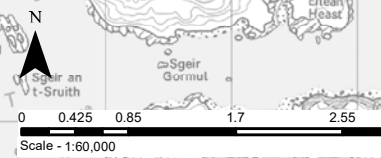
VP11. From Glen Arroch Minor Road looking towards Broadford
 VP12. Donald Murchison's Monument

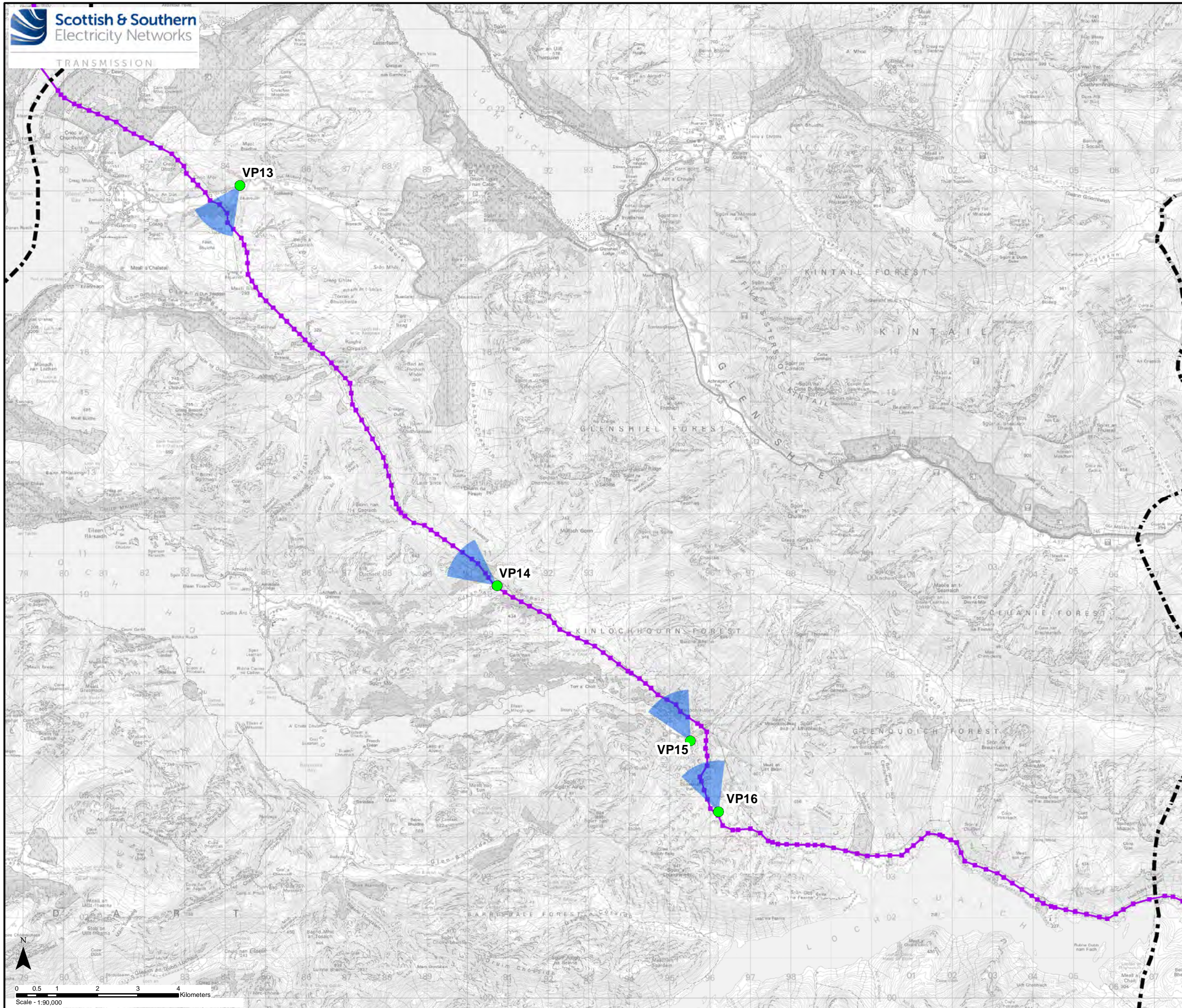
Reproduced by permission of Ordnance Survey on behalf of HMSO.
 Crown copyright and database right 2021 all rights reserved.
 Ordnance Survey Licence number EL273236.

Project No: LT91
 Project: Skye Reinforcement Project
 Consultation Document (Alignment)

Title: Figure 3.7e - Viewpoint Location Plan
 Section 3

Drawn by: SK 20/09/2021
 Drawing: 119026-CD-3.7e-1.0.0





Key

- Section Divider
- Preferred Alignment
- Preferred Alignment Tower Position
- Viewpoint
- ▶ Direction of View (53.5°)

Viewpoints

- VP13. Glen More
- VP14. Glendubhlochain
- VP15. Road Above Kinloch Hourn
- VP16. Loch Coire Shubb

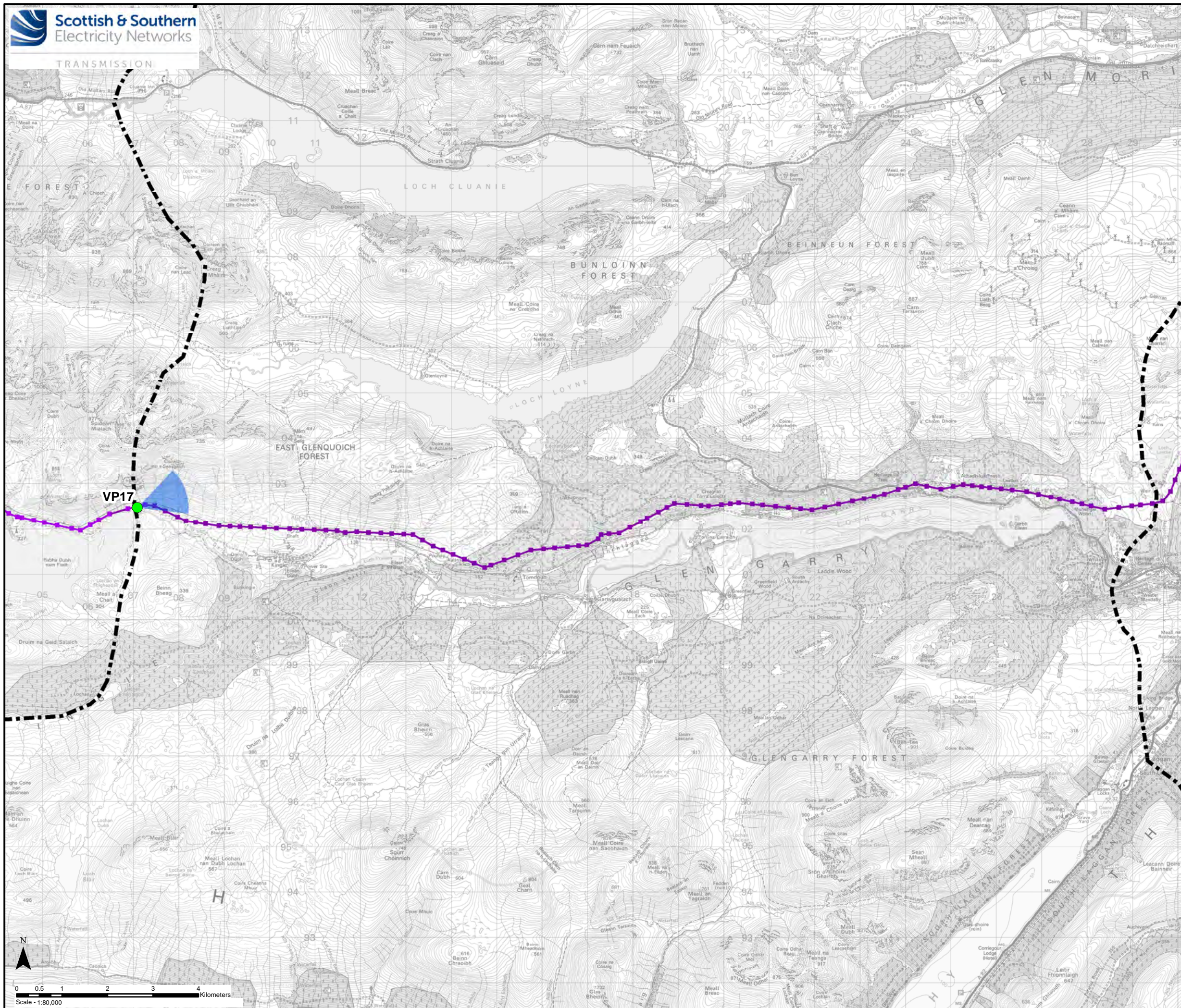
Reproduced by permission of Ordnance Survey on behalf of HMSO.
Crown copyright and database right 2021 all rights reserved.
Ordnance Survey Licence number EL273236.

Project No: LT91
Project: Skye Reinforcement Project
Consultation Document (Alignment)

Title: Figure 3.7f - Viewpoint Location Plan
Section 4

Drawn by: SK 20/09/2021

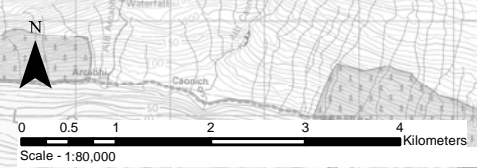
Drawing: 119026-CD-3.7f-1.0.0



- Key**
- Section Divider
 - Preferred Alignment
 - Preferred Alignment Tower Position
 - Viewpoint
 - ▶ Direction of View (53.5°)

Viewpoints

VP17. Loch Quoich Dam



Reproduced by permission of Ordnance Survey on behalf of HMSO.
Crown copyright and database right 2021 all rights reserved.
Ordnance Survey Licence number EL273236.

Project No: LT91
Project: Skye Reinforcement Project
Consultation Document (Alignment)

Title: Figure 3.7g - Viewpoint Location Plan
Section 5

Drawn by: SK 20/09/2021
Drawing: 119026-CD-3.7g-1.0.0



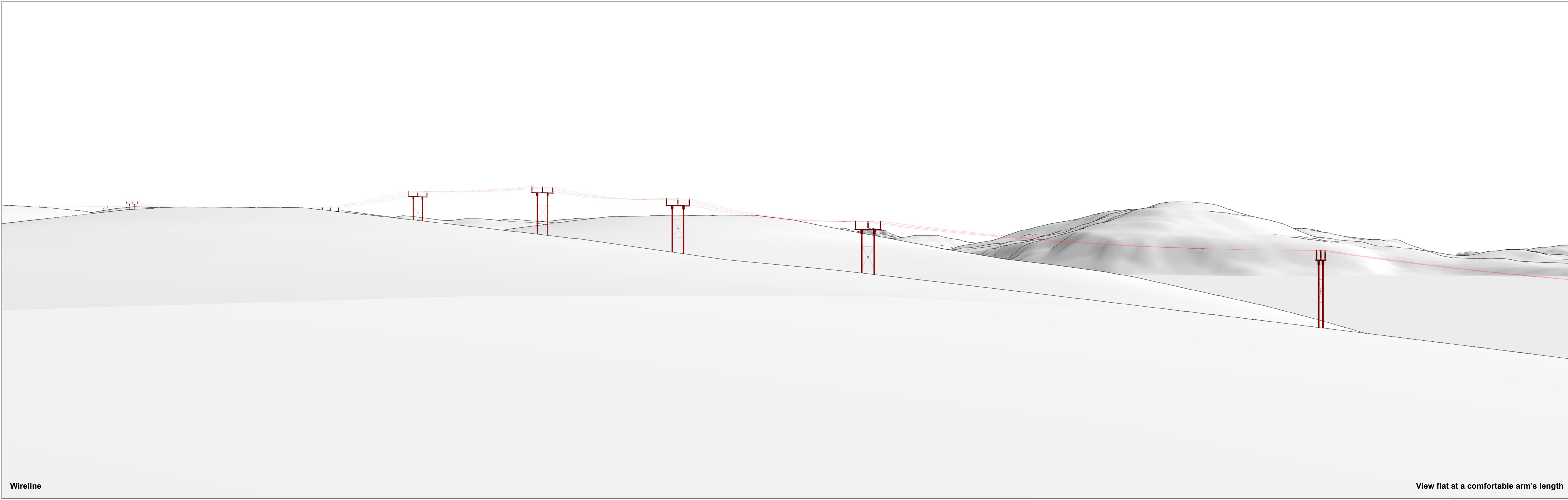
Existing View

View flat at a comfortable arm's length

Skye Reinforcement Project
 Figure 4.0.1a - Viewpoint 1: Trumpan Church and Burial Ground, Existing View

| | | | | | |
|------------------------|-------------------|----------------|--------------------------|-----------------------------|---------------------------|
| OS reference: | 122473 E 861215 N | Camera: | Sony ILCE 7RM3 | Horizontal field of view: | 53.5° (planar projection) |
| Ground level: | 52.3 m AOD | Lens: | 50mm (DT 50mm f/1.2 SAM) | Principal distance: | 812.5 mm |
| Direction of view: | 149° | Camera height: | 1.5m AGL | Paper size: | 841 x 297 mm (half A1) |
| Nearest proposed pole: | 0.23 km | Date and time: | 18/10/2020 17:01 | Correct printed image size: | 820 x 260 mm |





Wireline

View flat at a comfortable arm's length

Skye Reinforcement Project
 Figure 4.0.1b - Viewpoint 1: Trumpan Church and Burial Ground, Wireline (Preferred Alignment and Design Solution)

| | | | |
|------------------------|-------------------|-----------------------------|---------------------------|
| OS reference: | 122473 E 861215 N | Horizontal field of view: | 53.5° (planar projection) |
| Ground level: | 52.3 m AOD | Principal distance: | 812.5 mm |
| Direction of view: | 149° | Paper size: | 841 x 297 mm (half A1) |
| Nearest proposed pole: | 0.23 km | Correct printed image size: | 820 x 260 mm |





Photomontage

View flat at a comfortable arm's length

Skye Reinforcement Project
 Figure 4.0.1c - Viewpoint 1: Trumpan Church and Burial Ground, Photomontage (Preferred Alignment and Design Solution)

| | | | | | |
|------------------------|-------------------|----------------|--------------------------|-----------------------------|---------------------------|
| OS reference: | 122473 E 861215 N | Camera: | Sony ILCE 7RM3 | Horizontal field of view: | 53.5° (planar projection) |
| Ground level: | 52.3 m AOD | Lens: | 50mm (DT 50mm f/1.2 SAM) | Principal distance: | 812.5 mm |
| Direction of view: | 149° | Camera height: | 1.5m AGL | Paper size: | 841 x 297 mm (half A1) |
| Nearest proposed pole: | 0.23 km | Date and time: | 18/10/2020 17:01 | Correct printed image size: | 820 x 260 mm |





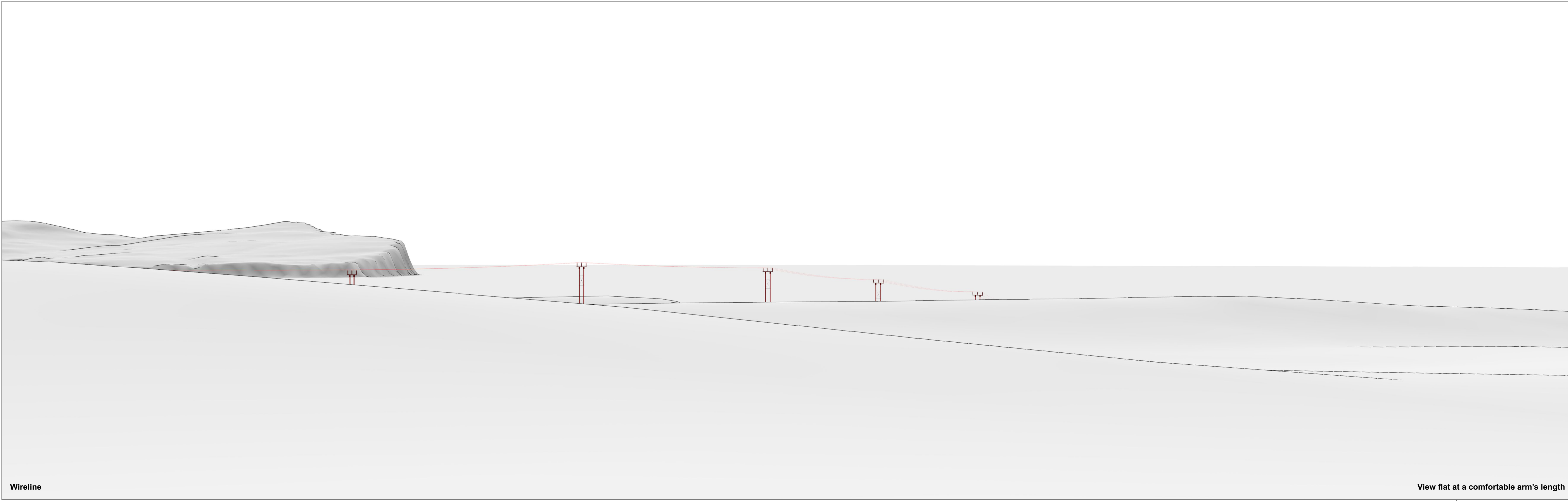
Existing View

View flat at a comfortable arm's length

Skye Reinforcement Project
 Figure 4.0.2a - Viewpoint 2: Trumpan, Existing View

| | | | | | |
|------------------------|-------------------|----------------|----------------------------|-----------------------------|---------------------------|
| OS reference: | 123214 E 861169 N | Camera: | Canon EOS 6D | Horizontal field of view: | 53.5° (planar projection) |
| Ground level: | 71.3 m AOD | Lens: | 50mm (Canon EF 50mm f/1.4) | Principal distance: | 812.5 mm |
| Direction of view: | 243° | Camera height: | 1.5m AGL | Paper size: | 841 x 297 mm (half A1) |
| Nearest proposed pole: | 0.41 km | Date and time: | 31/10/2019 13:27 | Correct printed image size: | 820 x 260 mm |

Drawing No. - 119026-D-CD-4.0.2A-1.0.0 Date - 21.09.2021



Wireline

View flat at a comfortable arm's length

Skye Reinforcement Project
 Figure 4.0.2b - Viewpoint 2: Trumpan, Wireline (Preferred Alignment and Design Solution)

| | | | |
|------------------------|-------------------|-----------------------------|---------------------------|
| OS reference: | 123214 E 861169 N | Horizontal field of view: | 53.5° (planar projection) |
| Ground level: | 71.3 m AOD | Principal distance: | 812.5 mm |
| Direction of view: | 243° | Paper size: | 841 x 297 mm (half A1) |
| Nearest proposed pole: | 0.41 km | Correct printed image size: | 820 x 260 mm |





Photomontage

View flat at a comfortable arm's length

Skye Reinforcement Project
 Figure 4.0.2c - Viewpoint 2: Trumpan, Photomontage (Preferred Alignment and Design Solution)

| | | | | | |
|------------------------|-------------------|----------------|----------------------------|-----------------------------|---------------------------|
| OS reference: | 123214 E 861169 N | Camera: | Canon EOS 6D | Horizontal field of view: | 53.5° (planar projection) |
| Ground level: | 71.3 m AOD | Lens: | 50mm (Canon EF 50mm f/1.4) | Principal distance: | 812.5 mm |
| Direction of view: | 243° | Camera height: | 1.5m AGL | Paper size: | 841 x 297 mm (half A1) |
| Nearest proposed pole: | 0.41 km | Date and time: | 31/10/2019 13:27 | Correct printed image size: | 820 x 260 mm |

Drawing No. - 119026-D-CD-4.0.2C-1.0.0 Date - 21.09.2021





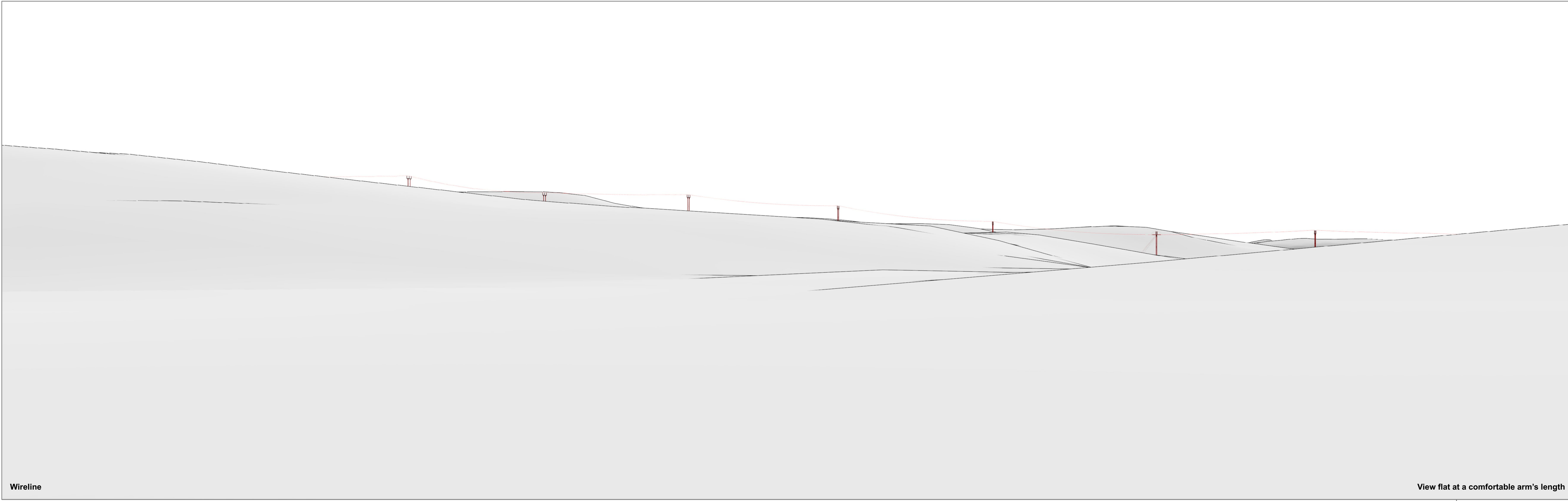
Existing View

View flat at a comfortable arm's length

Skye Reinforcement Project
 Figure 4.0.3a - Viewpoint 3: Dun Hallin Broch from Knockbreck School, Existing View

| | | | | | |
|------------------------|-------------------|----------------|--------------------------|-----------------------------|---------------------------|
| OS reference: | 126303 E 860150 N | Camera: | Sony ILCE 7RM3 | Horizontal field of view: | 53.5° (planar projection) |
| Ground level: | 122.3 m AOD | Lens: | 50mm (DT 50mm f/1.2 SAM) | Principal distance: | 812.5 mm |
| Direction of view: | 205° | Camera height: | 1.5m AGL | Paper size: | 841 x 297 mm (half A1) |
| Nearest proposed pole: | 0.73 km | Date and time: | 16/10/2020 10:13 | Correct printed image size: | 820 x 260 mm |

Drawing No. - 119026-D-CD-4.0.3A-1.0.0 Date - 21.09.2021



Wireline

View flat at a comfortable arm's length

Skye Reinforcement Project
 Figure 4.0.3b - Viewpoint 3: Dun Hallin Broch from Knockbreck School, Wireline (Preferred Alignment and Design Solution)

| | | | |
|------------------------|-------------------|-----------------------------|---------------------------|
| OS reference: | 126303 E 860150 N | Horizontal field of view: | 53.5° (planar projection) |
| Ground level: | 122.3 m AOD | Principal distance: | 812.5 mm |
| Direction of view: | 205° | Paper size: | 841 x 297 mm (half A1) |
| Nearest proposed pole: | 0.73 km | Correct printed image size: | 820 x 260 mm |





Photomontage

View flat at a comfortable arm's length

Skye Reinforcement Project
 Figure 4.0.3c - Viewpoint 3: Dun Hallin Broch from Knockbreck School, Photomontage (Preferred Alignment and Design Solution)

| | | | | | |
|------------------------|-------------------|----------------|--------------------------|-----------------------------|---------------------------|
| OS reference: | 126303 E 860150 N | Camera: | Sony ILCE 7RM3 | Horizontal field of view: | 53.5° (planar projection) |
| Ground level: | 122.3 m AOD | Lens: | 50mm (DT 50mm f/1.2 SAM) | Principal distance: | 812.5 mm |
| Direction of view: | 205° | Camera height: | 1.5m AGL | Paper size: | 841 x 297 mm (half A1) |
| Nearest proposed pole: | 0.73 km | Date and time: | 16/10/2020 10:13 | Correct printed image size: | 820 x 260 mm |





Existing View

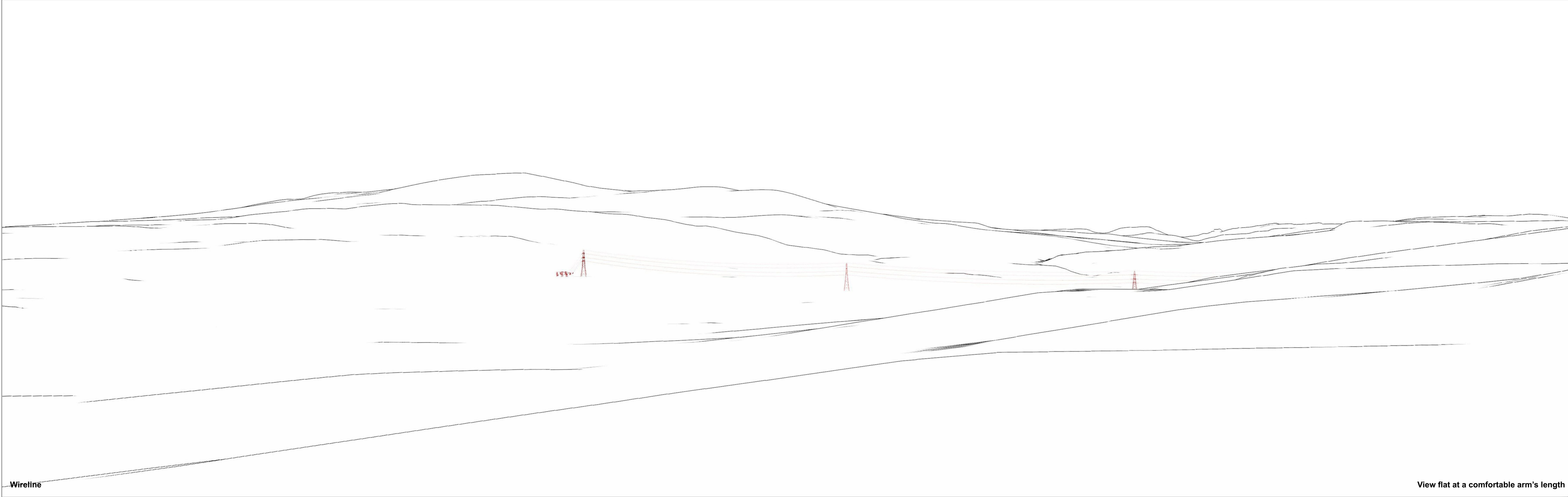
View flat at a comfortable arm's length

Skye Reinforcement Project

Figure 4.1.1a - Viewpoint 5: Glen Vic Askill from Dun Arkaig Broch, Existing View

| | | | | | |
|-------------------------|-------------------|----------------|--------------------------|-----------------------------|---------------------------|
| OS reference: | 135011 E 842636 N | Camera: | Sony ILCE 7RM3 | Horizontal field of view: | 53.5° (planar projection) |
| Ground level: | 101.7 m AOD | Lens: | 50mm (DT 50mm f/1.2 SAM) | Principal distance: | 812.5 mm |
| Direction of view: | 25° | Camera height: | 1.5m AGL | Paper size: | 841 x 297 mm (half A1) |
| Nearest proposed tower: | 1.61 km | Date and time: | 16/10/2020 14:21 | Correct printed image size: | 820 x 260 mm |

Drawing No. - 119026-D-CD-4.1.1A-1.0.0 Date - 21.09.2021



Wireline

View flat at a comfortable arm's length

Skye Reinforcement Project
 Figure 4.1.1b - Viewpoint 5: Glen Vic Askill from Dun Arkaig Broch, Wireline (Preferred Alignment and Design Solution)

| | | | |
|-------------------------|-------------------|-----------------------------|---------------------------|
| OS reference: | 135011 E 842636 N | Horizontal field of view: | 53.5° (planar projection) |
| Ground level: | 101.7 m AOD | Principal distance: | 812.5 mm |
| Direction of view: | 25° | Paper size: | 841 x 297 mm (half A1) |
| Nearest proposed tower: | 1.61 km | Correct printed image size: | 820 x 260 mm |





Photomontage

View flat at a comfortable arm's length

Skye Reinforcement Project
 Figure 4.1.1c - Viewpoint 5: Glen Vic Askill from Dun Arkaig Broch, Photomontage (Preferred Alignment and Design Solution)

| | | | | | |
|-------------------------|-------------------|----------------|--------------------------|-----------------------------|---------------------------|
| OS reference: | 135011 E 842636 N | Camera: | Sony ILCE 7RM3 | Horizontal field of view: | 53.5° (planar projection) |
| Ground level: | 101.7 m AOD | Lens: | 50mm (DT 50mm f/1.2 SAM) | Principal distance: | 812.5 mm |
| Direction of view: | 25° | Camera height: | 1.5m AGL | Paper size: | 841 x 297 mm (half A1) |
| Nearest proposed tower: | 1.61 km | Date and time: | 16/10/2020 14:21 | Correct printed image size: | 820 x 260 mm |

Drawing No. - 119026-D-CD-4.1.1C-1.0.0 Date - 21.09.2021





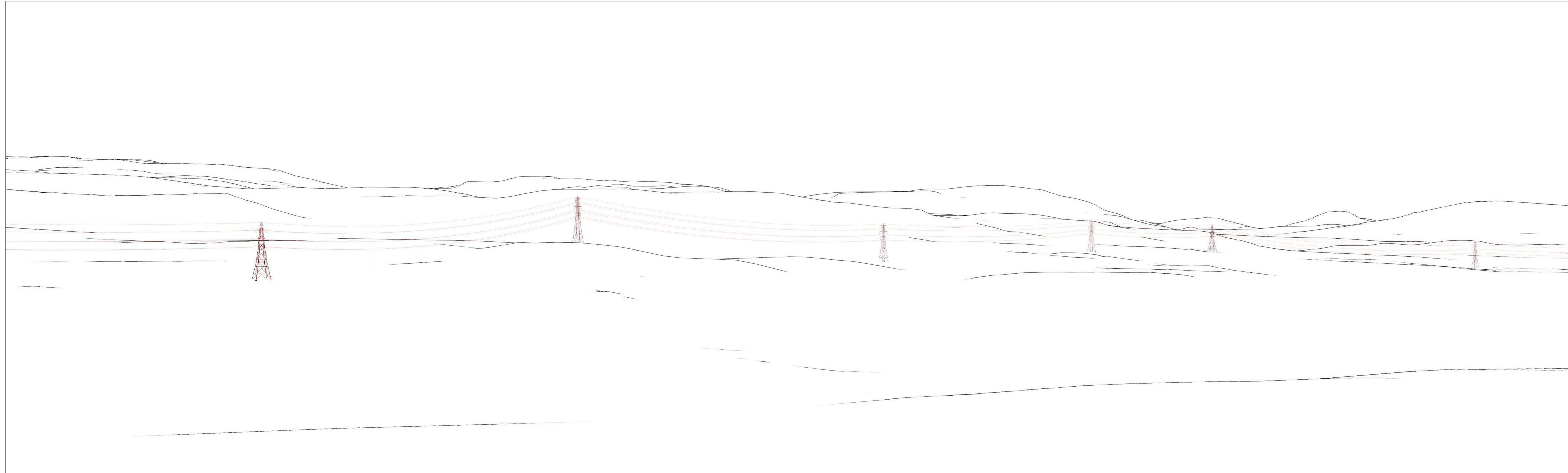
Existing View

View flat at a comfortable arm's length

Skye Reinforcement Project
 Figure 4.1.2a - Viewpoint 6: Mugeary, Existing View

| | | | | | |
|-------------------------|-------------------|----------------|----------------------------|-----------------------------|---------------------------|
| OS reference: | 144292 E 839321 N | Camera: | Canon EOS 6D | Horizontal field of view: | 53.5° (planar projection) |
| Ground level: | 153.1 m AOD | Lens: | 50mm (Canon EF 50mm f/1.4) | Principal distance: | 812.5 mm |
| Direction of view: | 258° | Camera height: | 1.5m AGL | Paper size: | 841 x 297 mm (half A1) |
| Nearest proposed tower: | 0.85 km | Date and time: | 04/05/2017 12:19 | Correct printed image size: | 820 x 260 mm |





Wireline

View flat at a comfortable arm's length

Skye Reinforcement Project
 Figure 4.1.2b - Viewpoint 6: Mugeary, Wireline (Preferred Alignment and Design Solution)

| | | | |
|-------------------------|-------------------|-----------------------------|---------------------------|
| OS reference: | 144292 E 839321 N | Horizontal field of view: | 53.5° (planar projection) |
| Ground level: | 153.1 m AOD | Principal distance: | 812.5 mm |
| Direction of view: | 258° | Paper size: | 841 x 297 mm (half A1) |
| Nearest proposed tower: | 0.85 km | Correct printed image size: | 820 x 260 mm |



Drawing No. - 119026-D-CD-4.1.2B-1.0.0 Date - 21.09.2021



Photomontage

View flat at a comfortable arm's length

Skye Reinforcement Project
 Figure 4.1.2c - Viewpoint 6: Mugeary, Photomontage (Preferred Alignment and Design Solution)

| | | | | | |
|-------------------------|-------------------|----------------|----------------------------|-----------------------------|---------------------------|
| OS reference: | 144292 E 839321 N | Camera: | Canon EOS 6D | Horizontal field of view: | 53.5° (planar projection) |
| Ground level: | 153.1 m AOD | Lens: | 50mm (Canon EF 50mm f/1.4) | Principal distance: | 812.5 mm |
| Direction of view: | 258° | Camera height: | 1.5m AGL | Paper size: | 841 x 297 mm (half A1) |
| Nearest proposed tower: | 0.85 km | Date and time: | 04/05/2017 12:19 | Correct printed image size: | 820 x 260 mm |





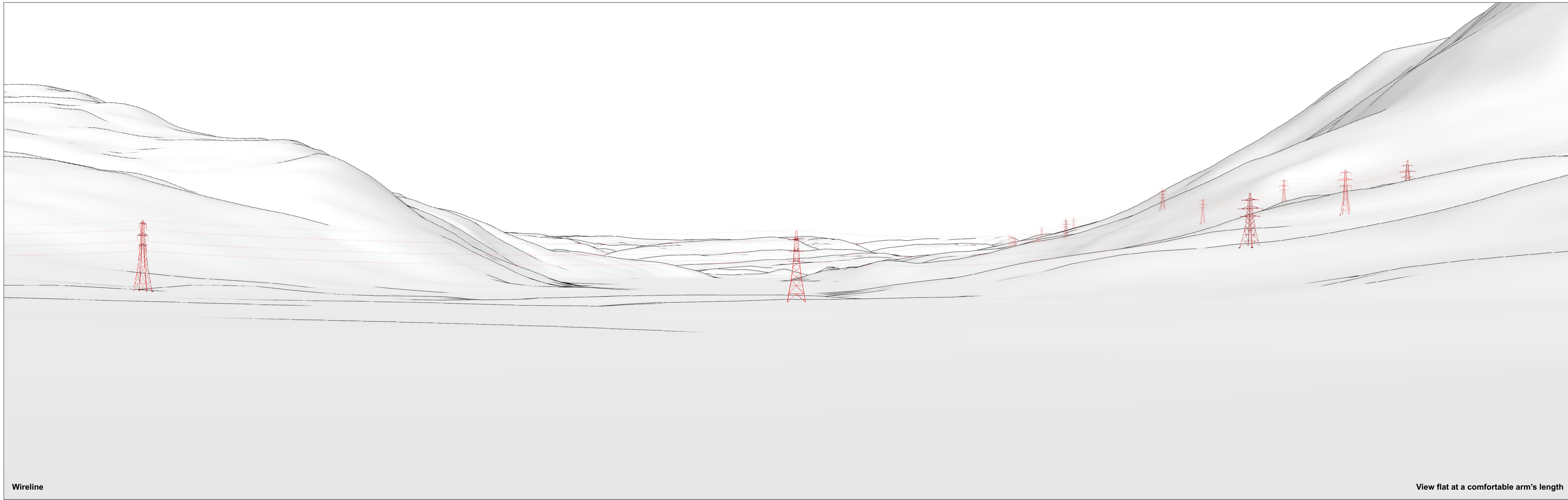
Existing View

View flat at a comfortable arm's length

Skye Reinforcement Project
 Figure 4.2.1a - Viewpoint 7: A87 at Sligachan Camp Site, Existing View

| | | | | | |
|-------------------------|-------------------|----------------|----------------------------|-----------------------------|---------------------------|
| OS reference: | 148485 E 830056 N | Camera: | Canon EOS 6D | Horizontal field of view: | 53.5° (planar projection) |
| Ground level: | 13.2 m AOD | Lens: | 50mm (Canon EF 50mm f/1.4) | Principal distance: | 812.5 mm |
| Direction of view: | 60° | Camera height: | 1.5m AGL | Paper size: | 841 x 297 mm (half A1) |
| Nearest proposed tower: | 0.60 km | Date and time: | 29/06/2016 13:29 | Correct printed image size: | 820 x 260 mm |

Drawing No. - 119026-D-CD-4.2.1A-1.0.0 Date - 21.09.2021



Wireline

View flat at a comfortable arm's length

Skye Reinforcement Project
 Figure 4.2.1b - Viewpoint 7: A87 at Sligachan Camp Site, Wireline (Baseline Alignment)

| | | | |
|-------------------------|-------------------|-----------------------------|---------------------------|
| OS reference: | 148485 E 830056 N | Horizontal field of view: | 53.5° (planar projection) |
| Ground level: | 13.2 m AOD | Principal distance: | 812.5 mm |
| Direction of view: | 60° | Paper size: | 841 x 297 mm (half A1) |
| Nearest proposed tower: | 0.60 km | Correct printed image size: | 820 x 260 mm |

Drawing No. - 119026-D-CD-4.2.1B-1.0.0 Date - 21.09.2021





Photomontage

View flat at a comfortable arm's length

Skye Reinforcement Project
 Figure 4.2.1c - Viewpoint 7: A87 at Sligachan Camp Site, Photomontage (Baseline Alignment)

| | | | | | |
|-------------------------|-------------------|----------------|----------------------------|-----------------------------|---------------------------|
| OS reference: | 148485 E 830056 N | Camera: | Canon EOS 6D | Horizontal field of view: | 53.5° (planar projection) |
| Ground level: | 13.2 m AOD | Lens: | 50mm (Canon EF 50mm f/1.4) | Principal distance: | 812.5 mm |
| Direction of view: | 60° | Camera height: | 1.5m AGL | Paper size: | 841 x 297 mm (half A1) |
| Nearest proposed tower: | 0.60 km | Date and time: | 29/06/2016 13:29 | Correct printed image size: | 820 x 260 mm |

Drawing No. - 119026-D-CD-4.2.1C-1.0.0 Date - 21.09.2021



Photomontage

View flat at a comfortable arm's length

Skye Reinforcement Project
 Figure 4.2.1d - Viewpoint 7: A87 at Sligachan Camp Site, Photomontage (Preferred Alignment and Design Solution)

| | | | | | |
|-------------------------|-------------------|----------------|----------------------------|-----------------------------|---------------------------|
| OS reference: | 148485 E 830056 N | Camera: | Canon EOS 6D | Horizontal field of view: | 53.5° (planar projection) |
| Ground level: | 13.2 m AOD | Lens: | 50mm (Canon EF 50mm f/1.4) | Principal distance: | 812.5 mm |
| Direction of view: | 60° | Camera height: | 1.5m AGL | Paper size: | 841 x 297 mm (half A1) |
| Nearest proposed tower: | N/A | Date and time: | 29/06/2016 13:29 | Correct printed image size: | 820 x 260 mm |





Existing View

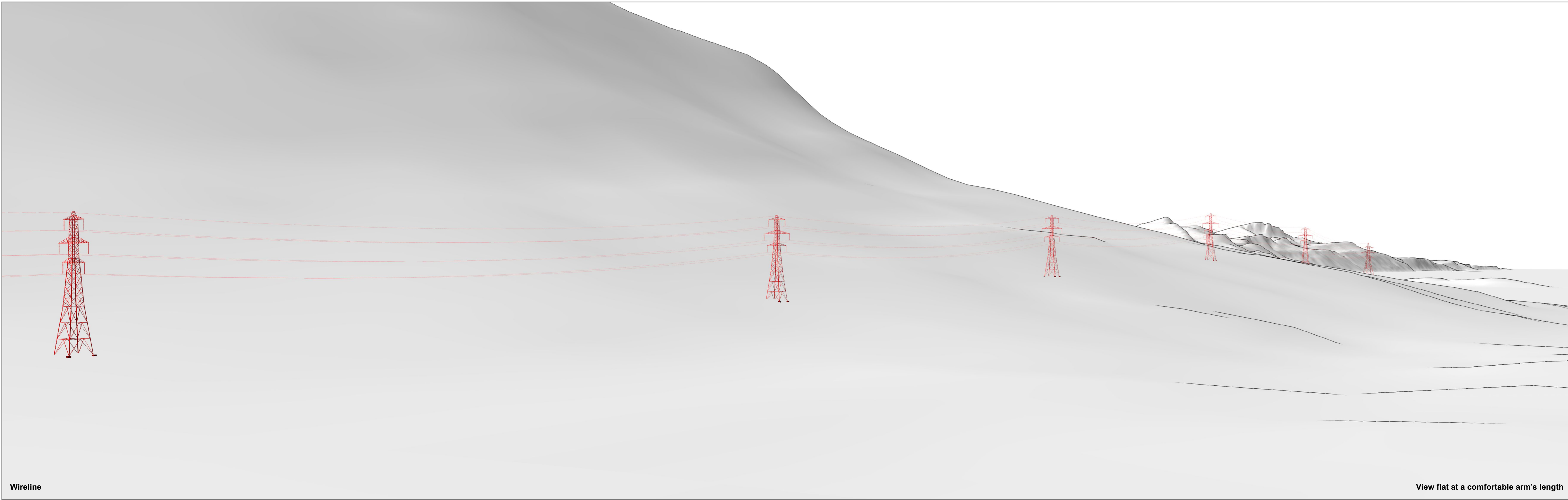
View flat at a comfortable arm's length

Skye Reinforcement Project

Figure 4.2.2a - Viewpoint 8: A87 in Gleann Torra-mhichaig, Existing View

| | | | | | |
|-------------------------|-------------------|----------------|----------------------------|-----------------------------|---------------------------|
| OS reference: | 153714 E 829844 N | Camera: | Canon EOS 6D | Horizontal field of view: | 53.5° (planar projection) |
| Ground level: | 62.5 m AOD | Lens: | 50mm (Canon EF 50mm f/1.4) | Principal distance: | 812.5 mm |
| Direction of view: | 340° | Camera height: | 1.5m AGL | Paper size: | 841 x 297 mm (half A1) |
| Nearest proposed tower: | 0.33 km | Date and time: | 29/06/2016 14:23 | Correct printed image size: | 820 x 260 mm |



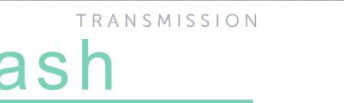


Wireline

View flat at a comfortable arm's length

Skye Reinforcement Project
 Figure 4.2.2b - Viewpoint 8: A87 in Gleann Torra-mhichaig, Wireline (Baseline Alignment)

| | | | |
|-------------------------|-------------------|-----------------------------|---------------------------|
| OS reference: | 153714 E 829844 N | Horizontal field of view: | 53.5° (planar projection) |
| Ground level: | 62.5 m AOD | Principal distance: | 812.5 mm |
| Direction of view: | 340° | Paper size: | 841 x 297 mm (half A1) |
| Nearest proposed tower: | 0.33 km | Correct printed image size: | 820 x 260 mm |





Photomontage

View flat at a comfortable arm's length

Skye Reinforcement Project
 Figure 4.2.2c - Viewpoint 8: A87 in Gleann Torra-mhichaig, Photomontage (Baseline Alignment)

| | | | | | |
|-------------------------|-------------------|----------------|----------------------------|-----------------------------|---------------------------|
| OS reference: | 153714 E 829844 N | Camera: | Canon EOS 6D | Horizontal field of view: | 53.5° (planar projection) |
| Ground level: | 62.5 m AOD | Lens: | 50mm (Canon EF 50mm f/1.4) | Principal distance: | 812.5 mm |
| Direction of view: | 340° | Camera height: | 1.5m AGL | Paper size: | 841 x 297 mm (half A1) |
| Nearest proposed tower: | 0.33 km | Date and time: | 29/06/2016 14:23 | Correct printed image size: | 820 x 260 mm |





Photomontage

View flat at a comfortable arm's length

Skye Reinforcement Project
 Figure 4.2.2d - Viewpoint 8: A87 in Gleann Torra-mhichaig, Photomontage (Preferred Alignment and Design Solution)

| | | | | | |
|-------------------------|-------------------|----------------|----------------------------|-----------------------------|---------------------------|
| OS reference: | 153714 E 829844 N | Camera: | Canon EOS 6D | Horizontal field of view: | 53.5° (planar projection) |
| Ground level: | 62.5 m AOD | Lens: | 50mm (Canon EF 50mm f/1.4) | Principal distance: | 812.5 mm |
| Direction of view: | 340° | Camera height: | 1.5m AGL | Paper size: | 841 x 297 mm (half A1) |
| Nearest proposed tower: | N/A | Date and time: | 29/06/2016 14:23 | Correct printed image size: | 820 x 260 mm |

Drawing No. - 119026-D-CD-4.2.2D-1.0.0 Date - 21.09.2021





Existing View

View flat at a comfortable arm's length

Skye Reinforcement Project
 Figure 4.2.3a - Viewpoint 9: Moll Minor Road near Kinloch Ainort, Existing View

| | | | | | |
|-------------------------|-------------------|----------------|----------------------------|-----------------------------|---------------------------|
| OS reference: | 153935 E 827045 N | Camera: | Canon EOS 6D | Horizontal field of view: | 53.5° (planar projection) |
| Ground level: | 7.5 m AOD | Lens: | 50mm (Canon EF 50mm f/1.4) | Principal distance: | 812.5 mm |
| Direction of view: | 322° | Camera height: | 1.5m AGL | Paper size: | 841 x 297 mm (half A1) |
| Nearest proposed tower: | 0.19 km | Date and time: | 04/05/2017 08:08 | Correct printed image size: | 820 x 260 mm |





Wireline

View flat at a comfortable arm's length

Skye Reinforcement Project
 Figure 4.2.3b - Viewpoint 9: Moll Minor Road near Kinloch Ainort, Wireline (Baseline Alignment)

| | | | |
|-------------------------|-------------------|-----------------------------|---------------------------|
| OS reference: | 153935 E 827045 N | Horizontal field of view: | 53.5° (planar projection) |
| Ground level: | 7.5 m AOD | Principal distance: | 812.5 mm |
| Direction of view: | 322° | Paper size: | 841 x 297 mm (half A1) |
| Nearest proposed tower: | 0.19 km | Correct printed image size: | 820 x 260 mm |



Drawing No. - 119026-D-CD-4.2.3B-1.0.0 Date - 21.09.2021



Photomontage

View flat at a comfortable arm's length

Skye Reinforcement Project
 Figure 4.2.3c - Viewpoint 9: Moll Minor Road near Kinloch Ainort, Photomontage (Baseline Alignment)

| | | | | | |
|-------------------------|-------------------|----------------|----------------------------|-----------------------------|---------------------------|
| OS reference: | 153935 E 827045 N | Camera: | Canon EOS 6D | Horizontal field of view: | 53.5° (planar projection) |
| Ground level: | 7.5 m AOD | Lens: | 50mm (Canon EF 50mm f/1.4) | Principal distance: | 812.5 mm |
| Direction of view: | 322° | Camera height: | 1.5m AGL | Paper size: | 841 x 297 mm (half A1) |
| Nearest proposed tower: | 0.19 km | Date and time: | 04/05/2017 08:08 | Correct printed image size: | 820 x 260 mm |





Photomontage

View flat at a comfortable arm's length

Skye Reinforcement Project
 Figure 4.2.3d - Viewpoint 9: Moll Minor Road near Kinloch Ainort, Photomontage (Preferred Alignment and Design Solution)

| | | | | | |
|-------------------------|-------------------|----------------|----------------------------|-----------------------------|---------------------------|
| OS reference: | 153935 E 827045 N | Camera: | Canon EOS 6D | Horizontal field of view: | 53.5° (planar projection) |
| Ground level: | 7.5 m AOD | Lens: | 50mm (Canon EF 50mm f/1.4) | Principal distance: | 812.5 mm |
| Direction of view: | 322° | Camera height: | 1.5m AGL | Paper size: | 841 x 297 mm (half A1) |
| Nearest proposed tower: | N/A | Date and time: | 04/05/2017 08:08 | Correct printed image size: | 820 x 260 mm |





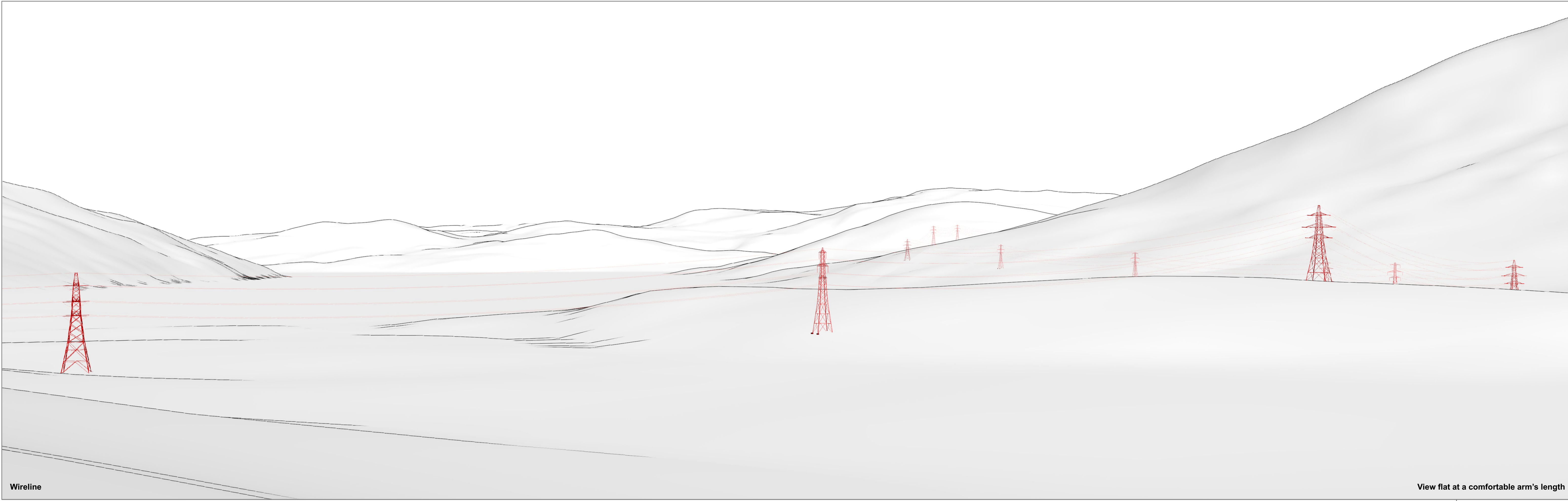
Existing View

View flat at a comfortable arm's length

Skye Reinforcement Project
 Figure 4.2.4a - Viewpoint 10: A87 overlooking Loch Ainort, Existing View

| | | | | | |
|-------------------------|-------------------|----------------|----------------------------|-----------------------------|---------------------------|
| OS reference: | 153714 E 829844 N | Camera: | Canon EOS 6D | Horizontal field of view: | 53.5° (planar projection) |
| Ground level: | 33.6 m AOD | Lens: | 50mm (Canon EF 50mm f/1.4) | Principal distance: | 812.5 mm |
| Direction of view: | 65° | Camera height: | 1.5m AGL | Paper size: | 841 x 297 mm (half A1) |
| Nearest proposed tower: | 0.47 km | Date and time: | 03/05/2017 16:18 | Correct printed image size: | 820 x 260 mm |





Wireline

View flat at a comfortable arm's length

Skye Reinforcement Project
 Figure 4.2.4b - Viewpoint 10: A87 overlooking Loch Ainort, Wireline (Baseline Alignment)

| | | | |
|-------------------------|-------------------|-----------------------------|---------------------------|
| OS reference: | 153714 E 829844 N | Horizontal field of view: | 53.5° (planar projection) |
| Ground level: | 33.6 m AOD | Principal distance: | 812.5 mm |
| Direction of view: | 65° | Paper size: | 841 x 297 mm (half A1) |
| Nearest proposed tower: | 0.47 km | Correct printed image size: | 820 x 260 mm |





Photomontage

View flat at a comfortable arm's length

Skye Reinforcement Project
 Figure 4.2.4c - Viewpoint 10: A87 overlooking Loch Ainort, Photomontage (Baseline Alignment)

| | | | | | |
|-------------------------|-------------------|----------------|----------------------------|-----------------------------|---------------------------|
| OS reference: | 153714 E 829844 N | Camera: | Canon EOS 6D | Horizontal field of view: | 53.5° (planar projection) |
| Ground level: | 33.6 m AOD | Lens: | 50mm (Canon EF 50mm f/1.4) | Principal distance: | 812.5 mm |
| Direction of view: | 65° | Camera height: | 1.5m AGL | Paper size: | 841 x 297 mm (half A1) |
| Nearest proposed tower: | 0.47 km | Date and time: | 03/05/2017 16:18 | Correct printed image size: | 820 x 260 mm |





Photomontage

View flat at a comfortable arm's length

Skye Reinforcement Project

Figure 4.2.4d - Viewpoint 10: A87 overlooking Loch Ainort, Photomontage (Preferred Alignment and Design Solution)

| | | | | | |
|-------------------------|-------------------|----------------|----------------------------|-----------------------------|---------------------------|
| OS reference: | 153714 E 829844 N | Camera: | Canon EOS 6D | Horizontal field of view: | 53.5° (planar projection) |
| Ground level: | 33.6 m AOD | Lens: | 50mm (Canon EF 50mm f/1.4) | Principal distance: | 812.5 mm |
| Direction of view: | 65° | Camera height: | 1.5m AGL | Paper size: | 841 x 297 mm (half A1) |
| Nearest proposed tower: | N/A | Date and time: | 03/05/2017 16:18 | Correct printed image size: | 820 x 260 mm |





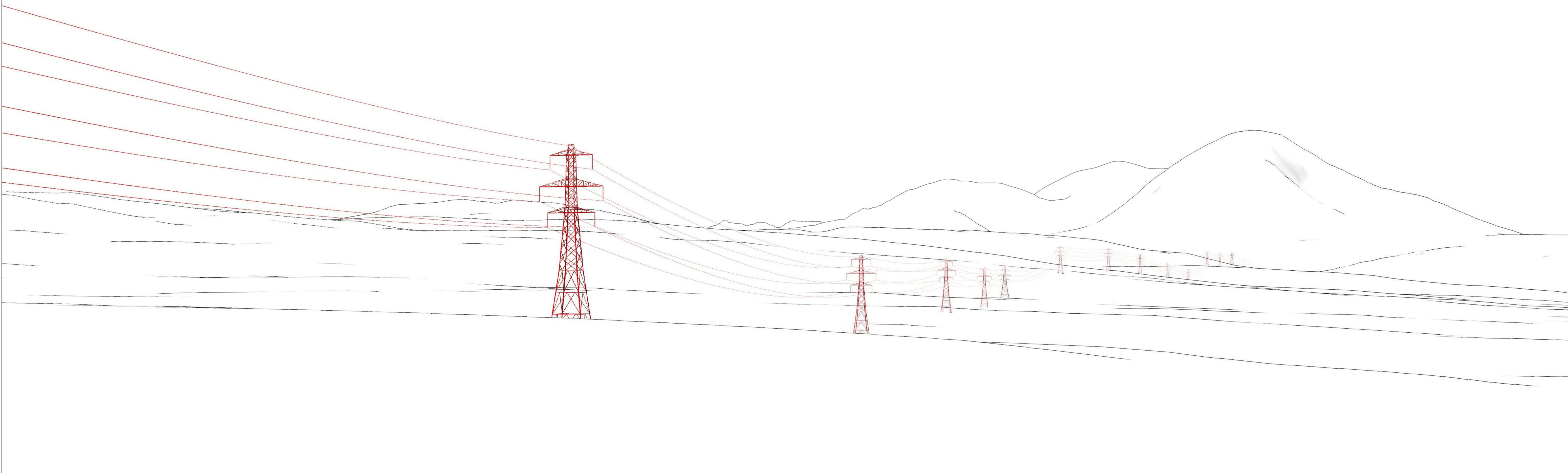
Existing View

View flat at a comfortable arm's length

Skye Reinforcement Project
 Figure 4.3.1a - Viewpoint 11: View from Near A851, Looking West, Existing View

| | | | | | |
|-------------------------|-------------------|----------------|----------------------------|-----------------------------|---------------------------|
| OS reference: | 167334 E 822118 N | Camera: | Canon EOS 6D | Horizontal field of view: | 53.5° (planar projection) |
| Ground level: | 45.1 m AOD | Lens: | 50mm (Canon EF 50mm f/1.4) | Principal distance: | 812.5 mm |
| Direction of view: | 275° | Camera height: | 1.5m AGL | Paper size: | 841 x 297 mm (half A1) |
| Nearest proposed tower: | 0.22 km | Date and time: | 16/03/2016 11:19 | Correct printed image size: | 820 x 260 mm |





Wireline

View flat at a comfortable arm's length

Skye Reinforcement Project
 Figure 4.3.1b - Viewpoint 11: View from Near A851, Looking West, Existing View Wireline (Preferred Alignment and Design Solution)

| | | | |
|-------------------------|-------------------|-----------------------------|---------------------------|
| OS reference: | 167334 E 822118 N | Horizontal field of view: | 53.5° (planar projection) |
| Ground level: | 45.1 m AOD | Principal distance: | 812.5 mm |
| Direction of view: | 275° | Paper size: | 841 x 297 mm (half A1) |
| Nearest proposed tower: | 0.22 km | Correct printed image size: | 820 x 260 mm |





Photomontage

View flat at a comfortable arm's length

Skye Reinforcement Project
 Figure 4.3.1c - Viewpoint 11: View from Near A851, Looking West, Photomontage (Preferred Alignment and Design Solution)

| | | | | | |
|-------------------------|-------------------|----------------|----------------------------|-----------------------------|---------------------------|
| OS reference: | 167334 E 822118 N | Camera: | Canon EOS 6D | Horizontal field of view: | 53.5° (planar projection) |
| Ground level: | 45.1 m AOD | Lens: | 50mm (Canon EF 50mm f/1.4) | Principal distance: | 812.5 mm |
| Direction of view: | 275° | Camera height: | 1.5m AGL | Paper size: | 841 x 297 mm (half A1) |
| Nearest proposed tower: | 0.22 km | Date and time: | 16/03/2016 11:19 | Correct printed image size: | 820 x 260 mm |





Existing View

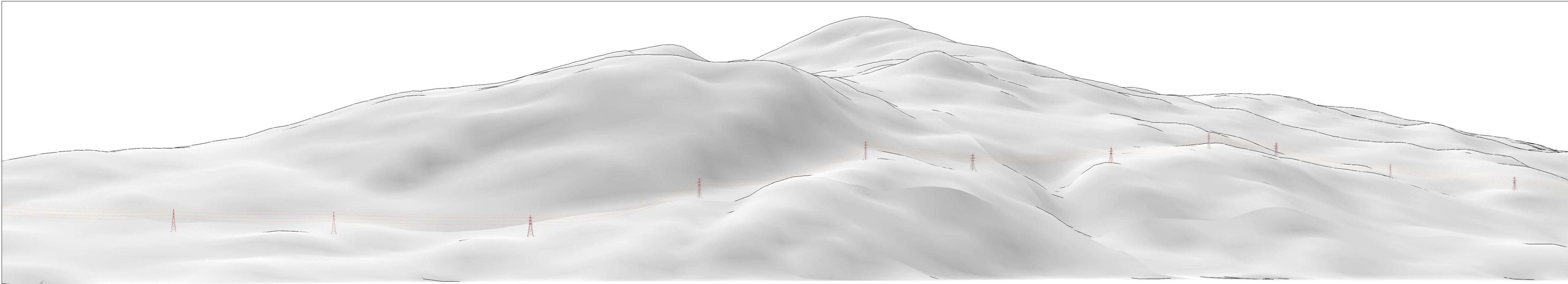
View flat at a comfortable arm's length

Skye Reinforcement Project

Figure 4.3.2a - Viewpoint 12: Donald Murchison's Monument, Existing View

| | | | | | |
|-------------------------|-------------------|----------------|----------------------------|-----------------------------|---------------------------|
| OS reference: | 178703 E 827081 N | Camera: | Canon EOS 6D | Horizontal field of view: | 53.5° (planar projection) |
| Ground level: | 12.4 m AOD | Lens: | 50mm (Canon EF 50mm f/1.4) | Principal distance: | 812.5 mm |
| Direction of view: | 199° | Camera height: | 1.5m AGL | Paper size: | 841 x 297 mm (half A1) |
| Nearest proposed tower: | 2.01 km | Date and time: | 16/03/2016 12:24 | Correct printed image size: | 820 x 260 mm |





Wireline

View flat at a comfortable arm's length

Skye Reinforcement Project
 Figure 4.3.2b - Viewpoint 12: Donald Murchison's Monument, Wireline (Preferred Alignment and Design Solution)

| | | | |
|-------------------------|-------------------|-----------------------------|---------------------------|
| OS reference: | 178703 E 827081 N | Horizontal field of view: | 53.5° (planar projection) |
| Ground level: | 12.4 m AOD | Principal distance: | 812.5 mm |
| Direction of view: | 199° | Paper size: | 841 x 297 mm (half A1) |
| Nearest proposed tower: | 2.01 km | Correct printed image size: | 820 x 260 mm |



Drawing No. - 119026-D-CD-4.3.2B-1.0.0 Date - 21.09.2021



Photomontage

View flat at a comfortable arm's length

Skye Reinforcement Project
 Figure 4.3.2c - Viewpoint 12: Donald Murchison's Monument, Photomontage (Preferred Alignment and Design Solution)

| | | | | | |
|-------------------------|-------------------|----------------|----------------------------|-----------------------------|---------------------------|
| OS reference: | 178703 E 827081 N | Camera: | Canon EOS 6D | Horizontal field of view: | 53.5° (planar projection) |
| Ground level: | 12.4 m AOD | Lens: | 50mm (Canon EF 50mm f/1.4) | Principal distance: | 812.5 mm |
| Direction of view: | 199° | Camera height: | 1.5m AGL | Paper size: | 841 x 297 mm (half A1) |
| Nearest proposed tower: | 2.01 km | Date and time: | 16/03/2016 12:24 | Correct printed image size: | 820 x 260 mm |





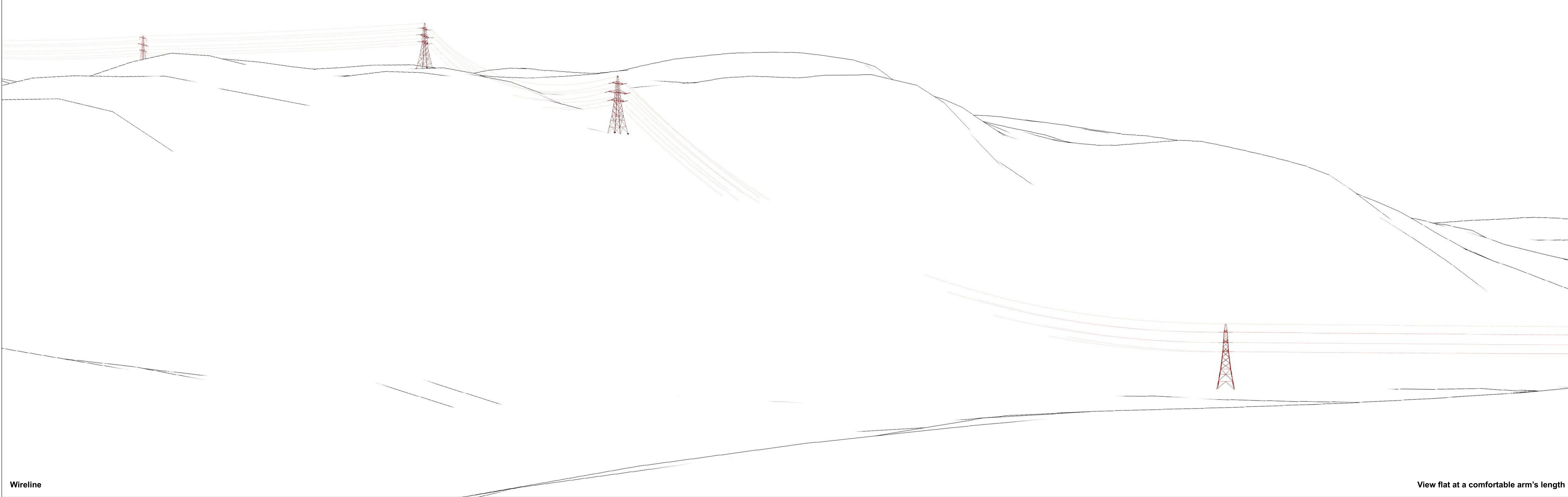
Existing View

View flat at a comfortable arm's length

Skye Reinforcement Project
 Figure 4.4.1a - Viewpoint 13: Glen More, Existing View

| | | | | | |
|-------------------------|-------------------|----------------|----------------------------|-----------------------------|---------------------------|
| OS reference: | 184368 E 820134 N | Camera: | Canon EOS 6D | Horizontal field of view: | 53.5° (planar projection) |
| Ground level: | 34.7 m AOD | Lens: | 50mm (Canon EF 50mm f/1.4) | Principal distance: | 812.5 mm |
| Direction of view: | 215° | Camera height: | 1.5m AGL | Paper size: | 841 x 297 mm (half A1) |
| Nearest proposed tower: | 0.69 km | Date and time: | 03/05/2017 08:19 | Correct printed image size: | 820 x 260 mm |





Wireline

View flat at a comfortable arm's length

Skye Reinforcement Project
 Figure 4.4.1b - Viewpoint 13: Glen More, Wireline (Preferred Alignment and Design Solution)

| | | | |
|-------------------------|-------------------|-----------------------------|---------------------------|
| OS reference: | 184368 E 820134 N | Horizontal field of view: | 53.5° (planar projection) |
| Ground level: | 34.7 m AOD | Principal distance: | 812.5 mm |
| Direction of view: | 215° | Paper size: | 841 x 297 mm (half A1) |
| Nearest proposed tower: | 0.69 km | Correct printed image size: | 820 x 260 mm |

Drawing No. - 119026-D-CD-4.4.1B-1.0.0 Date - 21.09.2021





Photomontage

View flat at a comfortable arm's length

Skye Reinforcement Project
 Figure 4.4.1c - Viewpoint 13: Glen More, Photomontage (Preferred Alignment and Design Solution)

| | | | | | |
|-------------------------|-------------------|----------------|----------------------------|-----------------------------|---------------------------|
| OS reference: | 184368 E 820134 N | Camera: | Canon EOS 6D | Horizontal field of view: | 53.5° (planar projection) |
| Ground level: | 34.7 m AOD | Lens: | 50mm (Canon EF 50mm f/1.4) | Principal distance: | 812.5 mm |
| Direction of view: | 215° | Camera height: | 1.5m AGL | Paper size: | 841 x 297 mm (half A1) |
| Nearest proposed tower: | 0.69 km | Date and time: | 03/05/2017 08:19 | Correct printed image size: | 820 x 260 mm |





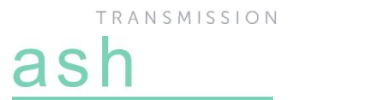
Existing View

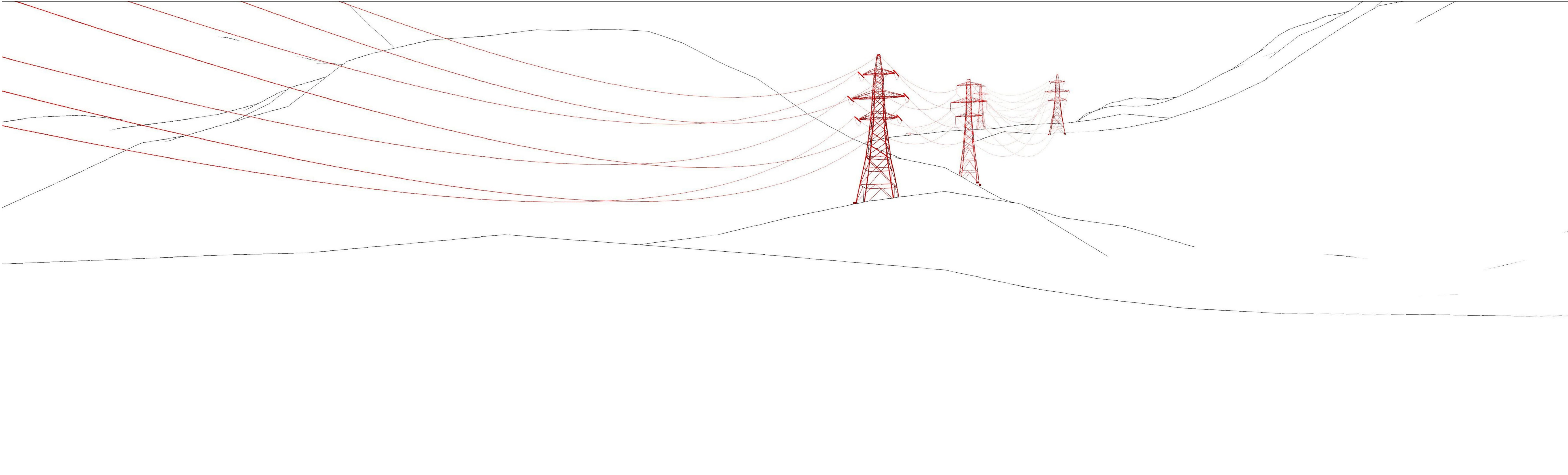
View flat at a comfortable arm's length

Skye Reinforcement Project

Figure 4.4.2a - Viewpoint 14: Gleadubhlochain - Looking NW, Existing View

| | | | | | |
|-------------------------|-------------------|----------------|----------------------------|-----------------------------|---------------------------|
| OS reference: | 190755 E 810218 N | Camera: | Canon EOS 5D Mk II | Horizontal field of view: | 53.5° (planar projection) |
| Ground level: | 152.8 m AOD | Lens: | 50mm (Canon EF 50mm f/1.4) | Principal distance: | 812.5 mm |
| Direction of view: | 305° | Camera height: | 1.5m AGL | Paper size: | 841 x 297 mm (half A1) |
| Nearest proposed tower: | 0.29 km | Date and time: | 16/08/2016 17:08 | Correct printed image size: | 820 x 260 mm |





Wireline

View flat at a comfortable arm's length

Skye Reinforcement Project
 Figure 4.4.2b - Viewpoint 14: Gleandubhlochain - Looking NW, Wireline (Preferred Alignment and Design Solution)

| | | | |
|-------------------------|-------------------|-----------------------------|---------------------------|
| OS reference: | 190755 E 810218 N | Horizontal field of view: | 53.5° (planar projection) |
| Ground level: | 152.8 m AOD | Principal distance: | 812.5 mm |
| Direction of view: | 305° | Paper size: | 841 x 297 mm (half A1) |
| Nearest proposed tower: | 0.29 km | Correct printed image size: | 820 x 260 mm |

Drawing No. - 119026-D-CD-4.4.2B-1.0.0 Date - 21.09.2021





Photomontage

View flat at a comfortable arm's length

Skye Reinforcement Project
 Figure 4.4.2c - Viewpoint 14: Gleadubhlochain - Looking NW, Photomontage (Preferred Alignment and Design Solution)

| | | | | | |
|-------------------------|-------------------|----------------|----------------------------|-----------------------------|---------------------------|
| OS reference: | 190755 E 810218 N | Camera: | Canon EOS 5D Mk II | Horizontal field of view: | 53.5° (planar projection) |
| Ground level: | 152.8 m AOD | Lens: | 50mm (Canon EF 50mm f/1.4) | Principal distance: | 812.5 mm |
| Direction of view: | 305° | Camera height: | 1.5m AGL | Paper size: | 841 x 297 mm (half A1) |
| Nearest proposed tower: | 0.29 km | Date and time: | 16/08/2016 17:08 | Correct printed image size: | 820 x 260 mm |





Existing View

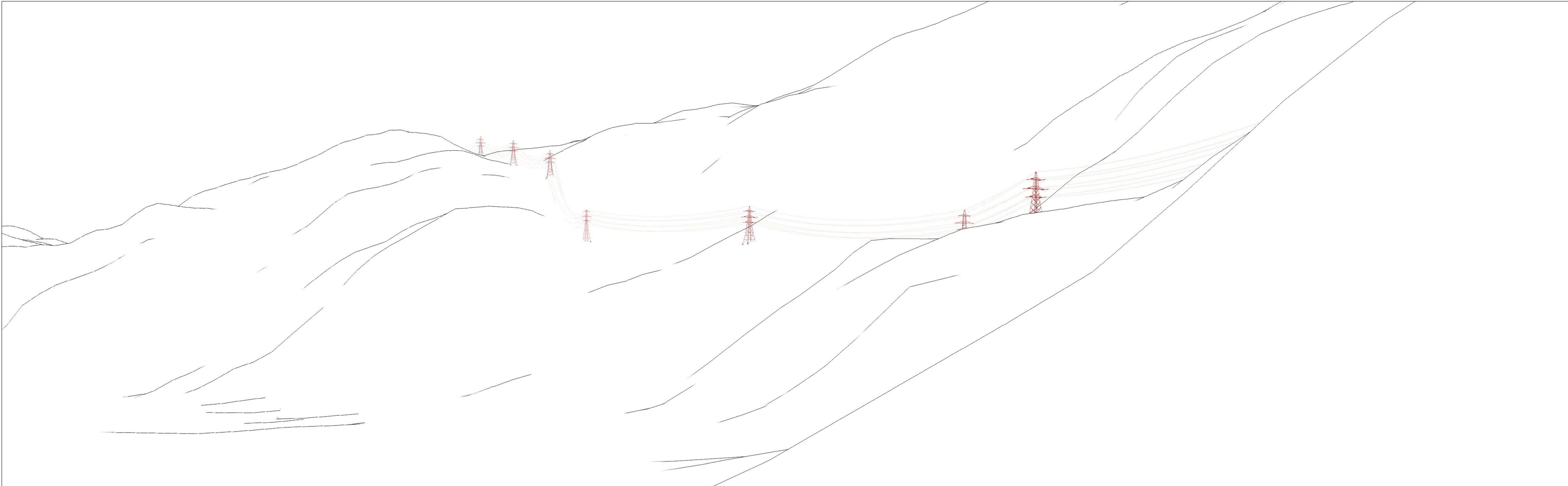
View flat at a comfortable arm's length

Skye Reinforcement Project
 Figure 4.4.3a - Viewpoint 15: Road Above Kinloch Hourn, Existing View

| | | | | | |
|-------------------------|-------------------|----------------|----------------------------|-----------------------------|---------------------------|
| OS reference: | 195517 E 806379 N | Camera: | Canon EOS 6D | Horizontal field of view: | 53.5° (planar projection) |
| Ground level: | 34.9 m AOD | Lens: | 50mm (Canon EF 50mm f/1.4) | Principal distance: | 812.5 mm |
| Direction of view: | 331° | Camera height: | 1.5m AGL | Paper size: | 841 x 297 mm (half A1) |
| Nearest proposed tower: | 0.75 km | Date and time: | 16/08/2016 17:08 | Correct printed image size: | 820 x 260 mm |

Drawing No. - 119026-D-CD-4.4.3A-1.0.0 Date - 21.09.2021





Wireline

View flat at a comfortable arm's length

Skye Reinforcement Project
 Figure 4.4.3b - Viewpoint 15: Road Above Kinloch Hourn, Wireline (Preferred Alignment and Design Solution)

| | | | |
|-------------------------|-------------------|-----------------------------|---------------------------|
| OS reference: | 195517 E 806379 N | Horizontal field of view: | 53.5° (planar projection) |
| Ground level: | 34.9 m AOD | Principal distance: | 812.5 mm |
| Direction of view: | 331° | Paper size: | 841 x 297 mm (half A1) |
| Nearest proposed tower: | 0.75 km | Correct printed image size: | 820 x 260 mm |





Photomontage

View flat at a comfortable arm's length

Skye Reinforcement Project
 Figure 4.4.3c - Viewpoint 15: Road Above Kinloch Hourn, Photomontage (Preferred Alignment and Design Solution)

| | | | | | |
|-------------------------|-------------------|----------------|----------------------------|-----------------------------|---------------------------|
| OS reference: | 195517 E 806379 N | Camera: | Canon EOS 6D | Horizontal field of view: | 53.5° (planar projection) |
| Ground level: | 34.9 m AOD | Lens: | 50mm (Canon EF 50mm f/1.4) | Principal distance: | 812.5 mm |
| Direction of view: | 331° | Camera height: | 1.5m AGL | Paper size: | 841 x 297 mm (half A1) |
| Nearest proposed tower: | 0.75 km | Date and time: | 16/08/2016 17:08 | Correct printed image size: | 820 x 260 mm |

Drawing No. - 119026-D-CD-4.4.3C-1.0.0 Date - 21.09.2021





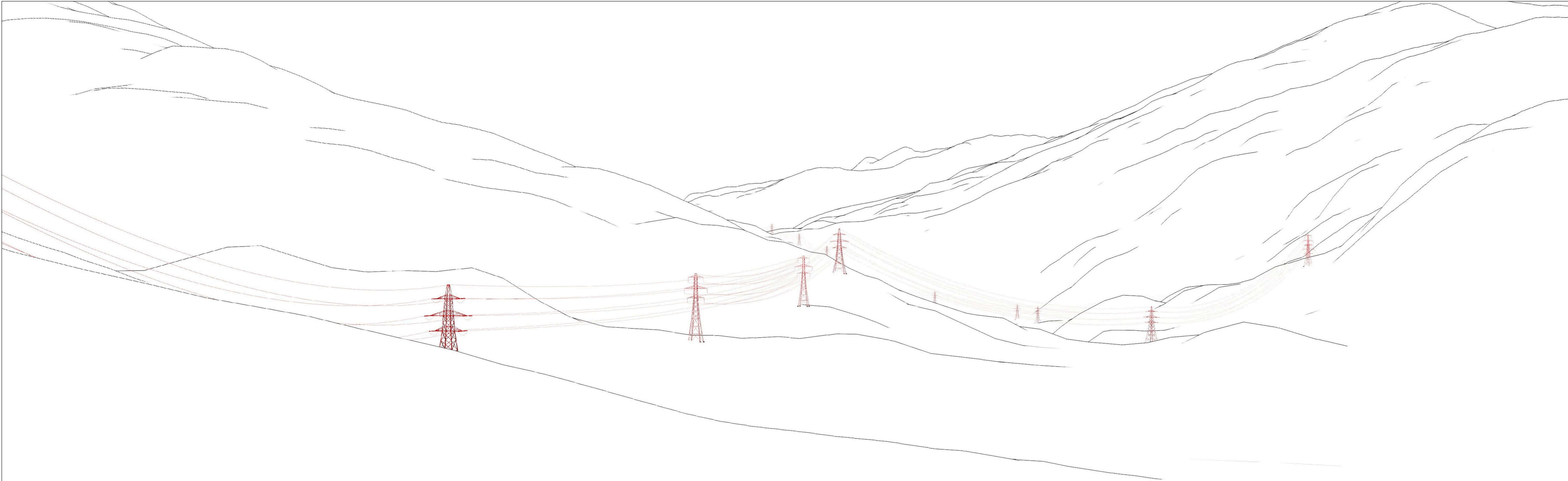
Existing View

View flat at a comfortable arm's length

Skye Reinforcement Project
 Figure 4.4.4a - Viewpoint 16: Loch Coire Shubh, Existing View

| | | | | | |
|-------------------------|-------------------|----------------|----------------------------|-----------------------------|---------------------------|
| OS reference: | 196215 E 804624 N | Camera: | Canon EOS 6D | Horizontal field of view: | 53.5° (planar projection) |
| Ground level: | 166.9 m AOD | Lens: | 50mm (Canon EF 50mm f/1.4) | Principal distance: | 812.5 mm |
| Direction of view: | 340° | Camera height: | 1.5m AGL | Paper size: | 841 x 297 mm (half A1) |
| Nearest proposed tower: | 0.41 km | Date and time: | 11/10/2017 14:10 | Correct printed image size: | 820 x 260 mm |

Drawing No. - 119026-D-CD-4.4.4A-1.0.0 Date - 21.09.2021



Wireline

View flat at a comfortable arm's length

Skye Reinforcement Project
 Figure 4.4.4b - Viewpoint 16: Loch Coire Shubh Wireline (Preferred Alignment and Design Solution)

| | | | |
|-------------------------|-------------------|-----------------------------|---------------------------|
| OS reference: | 196215 E 804624 N | Horizontal field of view: | 53.5° (planar projection) |
| Ground level: | 166.9 m AOD | Principal distance: | 812.5 mm |
| Direction of view: | 340° | Paper size: | 841 x 297 mm (half A1) |
| Nearest proposed tower: | 0.41 km | Correct printed image size: | 820 x 260 mm |

Drawing No. - 119026-D-CD-4.4.4B-1.0.0 Date - 21.09.2021





Photomontage

View flat at a comfortable arm's length

Skye Reinforcement Project
 Figure 4.4.4c - Viewpoint 16: Loch Coire Shubb, Photomontage (Preferred Alignment and Design Solution)

| | | | | | |
|-------------------------|-------------------|----------------|----------------------------|-----------------------------|---------------------------|
| OS reference: | 196215 E 804624 N | Camera: | Canon EOS 6D | Horizontal field of view: | 53.5° (planar projection) |
| Ground level: | 166.9 m AOD | Lens: | 50mm (Canon EF 50mm f/1.4) | Principal distance: | 812.5 mm |
| Direction of view: | 340° | Camera height: | 1.5m AGL | Paper size: | 841 x 297 mm (half A1) |
| Nearest proposed tower: | 0.41 km | Date and time: | 11/10/2017 14:10 | Correct printed image size: | 820 x 260 mm |

Drawing No. - 119026-D-CD-4.4.4C-1.0.0 Date - 21.09.2021





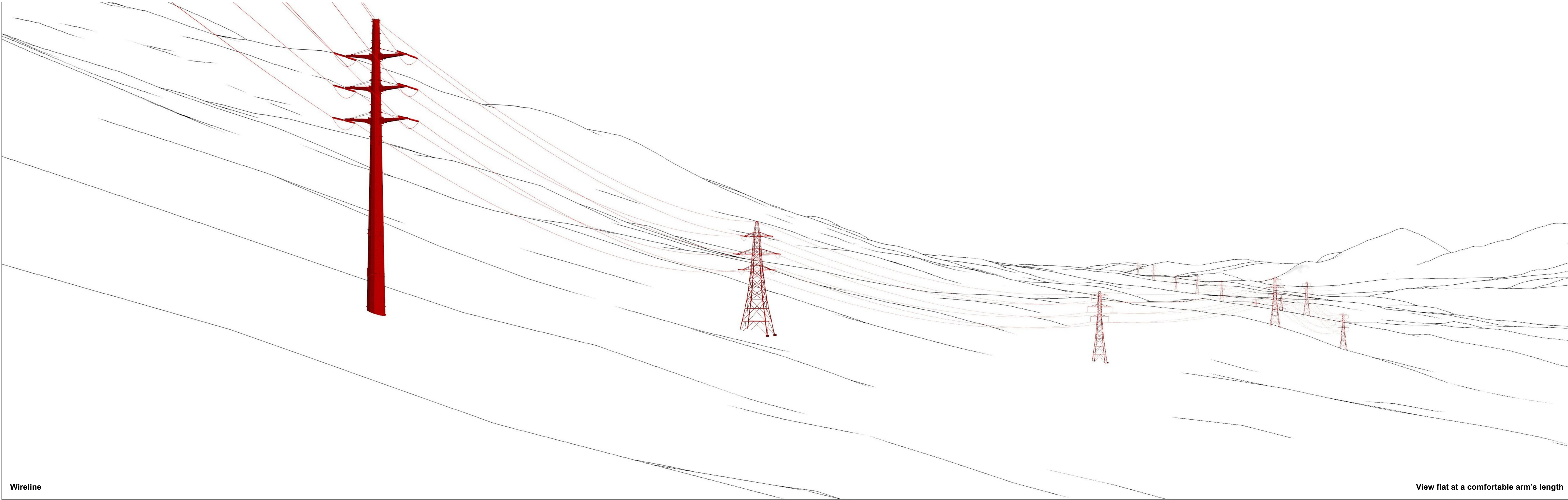
Existing View

View flat at a comfortable arm's length

Skye Reinforcement Project
 Figure 4.5.1a - Viewpoint 17: Loch Quoich Dam, Existing View

| | | | | | |
|-------------------------|-------------------|----------------|----------------------------|-----------------------------|---------------------------|
| OS reference: | 207082 E 802474 N | Camera: | Canon EOS 5D Mk II | Horizontal field of view: | 53.5° (planar projection) |
| Ground level: | 205.5 m AOD | Lens: | 50mm (Canon EF 50mm f/1.4) | Principal distance: | 812.5 mm |
| Direction of view: | 70° | Camera height: | 1.5m AGL | Paper size: | 841 x 297 mm (half A1) |
| Nearest proposed tower: | 0.18 km | Date and time: | 15/08/2016 18:59 | Correct printed image size: | 820 x 260 mm |

Drawing No. - 119026-D-CD-4.4.5A-1.0.0 Date - 21.09.2021



Wireline

View flat at a comfortable arm's length

Skye Reinforcement Project
 Figure 4.5.1b - Viewpoint 17: Loch Quoich Dam, Wireline (Preferred Alignment and Design Solution)

| | | | |
|-------------------------|-------------------|-----------------------------|---------------------------|
| OS reference: | 207082 E 802474 N | Horizontal field of view: | 53.5° (planar projection) |
| Ground level: | 205.5 m AOD | Principal distance: | 812.5 mm |
| Direction of view: | 70° | Paper size: | 841 x 297 mm (half A1) |
| Nearest proposed tower: | 0.18 km | Correct printed image size: | 820 x 260 mm |



Drawing No. - 119026-D-CD-4.4.5B-1.0.0 Date - 21.09.2021



Photomontage

View flat at a comfortable arm's length

Skye Reinforcement Project
Figure 4.5.1c - Viewpoint 17: Loch Quoich Dam, Photomontage (Preferred Alignment and Design Solution)

The NeSTS tower shown on this image is part of a separate development for the replacement of towers damaged in a landslide in 2019. This tower has been constructed but was not present at the time of photography.
 The photomontage does not include changes to landform undertaken for the construction of these towers.

OS reference: 207082 E 802474 N
 Ground level: 205.5 m AOD
 Direction of view: 70°
 Nearest proposed tower: 0.18 km

Camera: Canon EOS 5D Mk II
 Lens: 50mm (Canon EF 50mm f/1.4)
 Camera height: 1.5m AGL
 Date and time: 15/08/2016 18:59

Horizontal field of view: 53.5° (planar projection)
 Principal distance: 812.5 mm
 Paper size: 841 x 297 mm (half A1)
 Correct printed image size: 820 x 260 mm

Drawing No. - 119026-D-CD-4.4.5C-1.0.0 Date - 21.09.2021