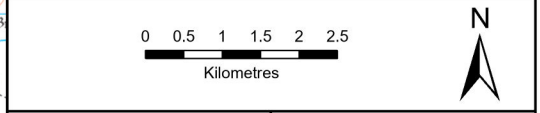


- Alignment Options**
- Potential
 - Alternative
 - Alignment Section Breaks
- Existing OHL**
- Existing 132kV OHL
- Heritage Constraints**
- Scheduled Monument
 - Category A Listed Building
 - Category B Listed Building
 - Category C Listed Building
- Ecological Constraints**
- Ancient Woodland Inventory
 - Class 1 Peat
 - Class 2 Peat
 - Drinking Water Protected Area (DWPA) Catchments
 - Flow Country Candidate World Heritage Site
 - Ramsar Site
 - RSPB Reserve
 - Site of Special Scientific Interest (SSSI)
 - Special Area of Conservation (SAC)
 - Special Protection Area (SPA)
 - Special Landscape Area (SLA)
 - Wild Land



SCALE: See Scale Bar	VERSION: A01
SIZE: A3	DRAWN: CR
PROJECT: 0652629	CHECKED: DN
DATE: 21/05/2024	APPROVED: KG

Spittal to Loch Buidhe to Beauly OHL Alignment Consultation Constraints Mapping

