

## APPENDIX F: PUBLIC CONSULTATION EVENT 1 PHOTOS OF EVENT







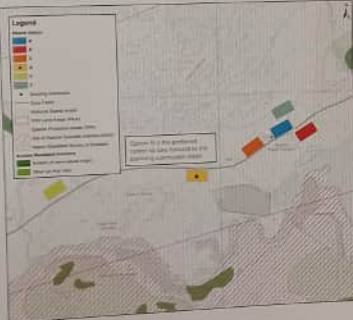
## Deanie site selection search area, options and preferred site

### Deanie Substation site options

The search area for Deanie is established (and) by the requirement to be within ten of the existing Deanie Hydro Electric Power Station. The area is defined by the following:

- Localised north-west of Loch Beathain River
- Deep river gullies to the west and north of the existing Deanie Hydro Electric Power Station
- There is an area of woodland to the south as well as the West Farm (Boundary of West Bank) through the search area itself is not water-logged or wooded.
- Glen Saphoran Road is adjacent to the site for access.

The site area, originally considered at Deanie, Sites A to F, as part of the initial site selection stage (2) Category A, B and D were then narrowed to the selected site (shown) due to criteria based on points of engineering and environmental sensitivity when compared to other options.



## Deanie site selection search area, options and preferred site

### Aerial view of the proposed substation



**Summary**  
On balance, when considering engineering, environmental and cost criteria together, the preferred site to be taken forward to planning application submission is site option D.

### Engineering summary

The initial technical assessment undertaken identified options A and D as the preferred locations to build the proposed new substation. Subsequent investigation into the feasibility of construction of the substation at option A immediately ruled out the site as being unsuitable. Option D was found to be a more suitable location for the substation. This, in effect, would require the existing hydro power station to be decommissioned from the grid for the duration of construction and the new substation built, decommissioned and ready for any site service.

While option D presents its own challenges due to the distance from the power station, which increases the length of the 11kV cables while increasing the generated supply to the grid via the new substation. The costs associated with these issues over the design life of the substation and cables is more commercially manageable than the revenue that would be lost by the grid to deliver power to and return it away during construction.

Site D also offers considerable extra space for a construction compound and permanent access to be granted to help operate the substation and reduce the overall visual and transmission impact.

### Environmental summary

All site options have similar environmental characteristics in terms of being located within the Glen Saphoran National Special Protection Area (NSP) and being primarily decommissioned. Option D is the preferred site as it is located in the search area and is not water-logged or wooded. This, in effect, would require the existing hydro power station to be decommissioned from the grid for the duration of construction and the new substation built, decommissioned and ready for any site service.

Option D is the preferred site as it is located in the search area and is not water-logged or wooded. This, in effect, would require the existing hydro power station to be decommissioned from the grid for the duration of construction and the new substation built, decommissioned and ready for any site service.

Option D is the preferred site as it is located in the search area and is not water-logged or wooded. This, in effect, would require the existing hydro power station to be decommissioned from the grid for the duration of construction and the new substation built, decommissioned and ready for any site service.

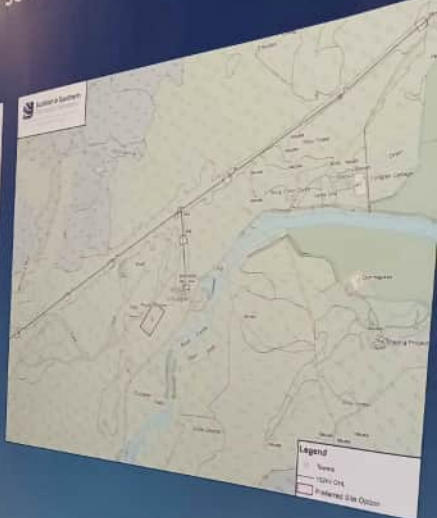






Scottish & Southern  
Electricity Networks  
TRANSMISSION

### Cullintran site selection search area and preferred site



[www.ssen-transmission.co.uk/projects/west-of-beaulieu-asset-replacement-projects](http://www.ssen-transmission.co.uk/projects/west-of-beaulieu-asset-replacement-projects)  
@ssencommunity  
@assetransmission

## Engineering and economic considerations

Our Transmission Operators license requires us to provide best value for customers and GB consumers. As a natural monopoly, SSEN Transmission is closely regulated by the GB energy regulator Office of Gas and Electricity Markets (Ofgem), who determine how much revenue we are allowed to earn for constructing, maintaining and replacing our transmission network.

These costs are shared between all those using the transmission system, including generation developers and electricity consumers. We therefore work to strict price controls which means the following engineering and economic considerations form a key part of our site selection process:

### Construction

The costs and practicalities associated with constructing new platforms can vary considerably with location, depending on ground conditions, topography and underlying geology.

This means considering access and delivery routes, space for laydown and construction compounds, alongside consideration of future use. The topography and underlying ground conditions dictate how much material must be removed and moved to create a flat site with a suitable base. Importing and exporting large quantities of aggregates and spoil is intensive and is not environmentally desirable due to impacts associated with transport. We can also use topography to our advantage, using existing ridges, mounds and slopes to provide screening for the site. This can reduce the amount of additional hard and soft landscaping required.

### Operations

Our sites will be operational for a long time and will require ongoing maintenance and repairs by our Operations Team.

They need to be able to access the site easily and safely in all weather. More exposed sites will likely need more maintenance during their life. In addition, where we have created or enhanced local habitat, we take on the responsibility for long term maintenance of landscaping to ensure it is successful.

Any potential impacts to the operation of the existing network and security of supply for our customers from demand and generation must be carefully considered and managed where possible.

### Noise mitigation/technology

The plant and equipment used in the construction and connection of each substation will vary in cost.

Site location can drive the use of alternative technologies, driven by factors such as wind speed, altitude, proximity to coast etc.

The available footprint may also dictate the use of alternative technologies in order to fit the required plant and equipment, which can come at a price. Some noise and vibration may also require to be housed indoors at an additional cost. The extent between cable and overhead line in connecting the new with the underpinning will also affect the cost of the project.

It is unlikely that any significant noise mitigation will be required across the four sites due to the relatively small size of the substations and surrounding background noise levels relative to sensitive human receptors. However, should operational noise and background noise prove a problem, then mitigation would need to be in the form of enclosures or walls that are designed to absorb any noise above background levels.

### Connections

Each new substation requires to be connected to both the affected existing power station and 132kV overhead lines, so proximity to both of these is desirable.

The further away from these points of connection the limited site is, the greater the engineering challenges and cost. In more underground cases, which tend to be readily available, are more expensive than equivalent overhead lines.

By minimising the 11kV cable route lengths, we are able to make more efficient use of the renewable energy that is generated at each Hydro Power Station.

Given the fixed location of the seven plants, including any new overhead infrastructure as a key consideration.

### Forestry and biodiversity

The cost and environmental impacts of felling trees and any compensatory planting must be factored into the assessment.

SSEN Transmission are committed to a no net loss of forestry and biodiversity on projects. Choosing a site with more trees being or in more ecologically rich habitats will incur greater costs. Compensatory planting and habitat creation/enhancements.

## Environmental considerations

Due to the location of the projects, three at Cullin and two at Gulligan are both located within or close to Strathgairn Special Protection Area (SPA), Area and Glen Strathfarrar Site of Special Interest (SSSI).

Strathgairn Special Area of Conservation (SAC) close proximity to four Category B listed buildings. During site selection we performed an assessment of the potential impacts on visual amenity. These include potential impacts on visual amenity and flood risk.

### Landscape and visual designations

The appearance of the substations within the landscape will be carefully considered.

Site selection has also been guided by effects on the landscape and Gulligan projects in relation to the importance of Glen Strathfarrar Road access routes in the sensitive landscape.

Mitigation is anticipated to include using hard and soft landscaping, with the natural landscape developments from key visual receptors.

### Hydrology and geology

The following hydrological aspects are being considered as part of the site selection process for each of the substations:

- Phosphate water outfalls
- Groundwater dependent geological aquifers (GWDEAs)
- Potential for flood risk (particularly at Angan)
- If any designated sites are hydrologically linked to the site.

An appropriate low drainage plan for both the construction and operational phases will be developed to ensure no adverse impacts on the surrounding environment.

### Ecology and ornithology

Several ecology surveys and assessments have been carried out covering:

- Habitats, including biodiversity
- Protected species, including suitability for badgers, otter, red squirrel and pine marten being undertaken.
- Breeding bird surveys are in the process of being undertaken.

Tree felling will be required for the preferred site at Cullin, and possibly minor felling at Gulligan. All projects will seek to achieve no net loss of biodiversity which will be achieved through habitat improvement and additional planting at agreed locations.



## Environmental considerations

Due to the location of the projects, there are a number of key environmental considerations. Deanie and Culligran are both located within or close to the Glen Strathfarrar National Scenic Area and Glen Affric to Strathcathie Special Protection Area (SPA). They are also located close to the Central Highlands Wild Land Area and Glen Strathfarrar Site of Special Scientific Interest (SSSI).

Strathgairn Special Area of Conservation (SAC) is located to the south of Deanie. Kilmorack is located in close proximity to four Category B listed Buildings and one Category C Listed Building. The main areas of assessment during site selection are outlined below. It should be noted that any potential impacts which concern the population have been considered under the umbrella of the "environmental considerations". These include potential impacts on visual amenity, noise, proximity to dwellings, recreational receptors and flood risk.

### Landscape and visual designations

The appearance of the substations within the landscape and how/where they will be seen is being carefully considered.

Site selection has also been guided by effects on nationally valued landscape, with particular consideration of:

- Deanie and Culligran projects in relation to the National Scenic Area and Wild Land Areas
- The importance of Glen Strathfarrar Road Core Paths, Public Rights of Way and other recreational access routes in the sensitive landscape
- Landscape character, visual amenity and heritage assets (including several listed buildings)

Mitigation is anticipated to include using the existing landform features and the creation of sympathetic hard and soft landscaping, with the natural landform offering opportunities for screening views of the proposed developments from key visual receptors.

### Hydrology and geology

The following hydrological aspects are being considered as part of the site selection process for each of the substations:

- Private water supplies
- Catchment/water dependent terrestrial ecosystem (GWOTF)
- Potential for flood risk (particularly at Aghil)
- If any surrounding sites are hydrologically linked to the site

An appropriate site drainage plan for both the construction and operational phases will be developed to ensure no adverse impacts on the surrounding water environment.

### Ecology and ornithology

Several ecology surveys and assessments have been carried out covering:

- Habitats, including biodiversity
- Protected species, including suitability for buzzard, otter, badger, red squirrel and pine marten
- Breeding bird surveys are in the process of being undertaken

Tree felling will be required for the preferred site at Culligran, and possibly minor thinning at Aghil. All projects will seek to achieve no net loss of biodiversity which will be achieved through habitat improvement and additional planting at agreed locations.

### Cultural heritage

The preferred site option at Kilmorack has the potential for setting impacts on listed buildings.

There is also the potential for impacts on known and unknown archaeological remains. Setting impacts will be considered as part of the design development. Mitigation measures may include screening for visual intrusion.

### Land use, access and recreation

No long-distance routes are identified within the sites under consideration. Core paths and public rights of way are present within both the Deanie and Culligran site options.



Golden eagle



Red squirrel

@ssencommunity  
@ssetransmission

www.ssen-transmission.co.uk/projects/west-of-beaulieu-asset-replacement-projects/



## Deanie search and

Deanie Subst  
The search are

- Located north
- Sleep terrain
- There is an
- Although the
- Glen Strathfarrar

Six options were  
Options A, B and  
of engineering a

### Legend

- Existing routes
- Core Paths
- National Scenic Area
- Wild Land Area
- Special Protection Area
- Site of Special Scientific Interest
- National Visual Corridor
- Proposed Development
- Proposed Core Path
- Other Core Path



www.ssen-transmission.co.uk

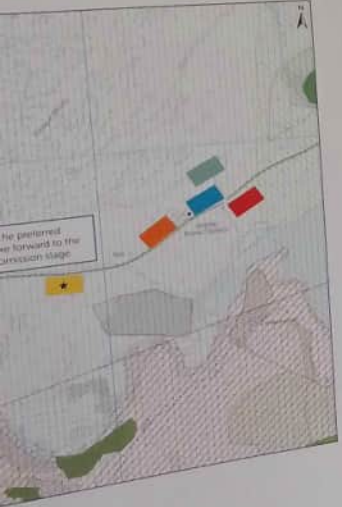


# ection ptions ite

requirement to be within 1km of the existing  
d by the following:

isting Dearve Hydro Electric Power Station,  
the River Farrar (tributary of River Beaulieu),  
e of woodland)

A to F) as part of the initial site selection (stage 1).  
etailed site selection due to scoring better in terms  
ompared to the other options.



@ssencommunity  
@ssetransmission  
@ssetransmission-projects/  
/projects/west-of-beaulieu-asset-replacement-projects/



TRANSMISSION

## Deanie site selection search area, options and preferred site

Aerial view of the proposed substation



### Summary

On balance, when considering the engineering, environmental and cost criteria together, the preferred site to be taken forward to planning application submission is site option D.

### Engineering summary

The initial technical assessment undertaken identified options A and D as the preferred locations to build the proposed new substation. Subsequent investigation into the feasibility of construction of the substation at option A immediately adjacent to the existing substation, found that it would be prohibitively challenging. It not impossible to build here without significant outages. This, in effect, would require the generating hydro power station to be disconnected from the grid for the duration of construction until the new substation was commissioned and ready for entry into service.

While option D presents its own challenges due to the distance from the power station, which increases the length of the 11kV cable route connecting the generated supply to the grid via the new substation. The costs associated with these losses over the design life of the substation and cabling is more commercially manageable than the revenue that would be lost by the customer, not to mention the reduced capacity of the grid to deliver power to end users, if we were to disconnect the power station for the duration of construction.

Site D also offers considerable extra space for a construction compound and permanent screening to be planned to help conceal the substation and reduce the overall visual and environmental impact.

### Environmental summary

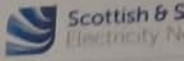
All site options have similar environmental constraints in terms of being located within the Glen ANAC, so Southdown Special Protection Area (SPA), an area primarily (approximately 13,000 ha) of the Glen Southdown Site of Special Scientific Interest (SSSI) and Southdown Special Area of Conservation (SAC). No site options are likely to result in significant negative impacts. None of the sites whose construction have any designated sites or special cultural heritage assets within 500m.

Glen Southdown Road (A630) (2011) Clear Path passes the majority of the site options, with none of the options likely to adversely impact the core path.

Site option A was considered to be the second preferred option to be investigated further at detailed design stage from an environmental perspective. As this option is situated directly next to the existing substation, thereby keeping the infrastructure in the same location.

Due to the sensitivities associated with the substation site options being located adjacent to Glen Southdown National Scenic Area, site option D was considered to be the preferred site, which conserving the landscape and views, while future alongside scope for mitigation.

www.ssen-transmission.co.uk/projects/west-of-beaulieu-asset-replacement-projects/  
@ssencommunity  
@ssetransmission  
@ssetransmission-projects/



TRANSMISSION

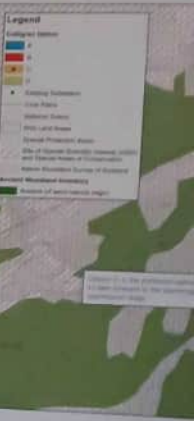
## Culligran search area and preferred

Culligran substation site options

The search area for Culligran is bounded by the  
Culligran Power Station. The area is bounded

- Search area is bounded by area of...
- Search area is bounded by area of...
- Search area is bounded by area of...
- Search area is bounded by area of...

For Culligran, two options were initially considered to be taken forward to planning application submission. Option D was the preferred site to be taken forward to planning application submission.



www.ssen-transmission.co.uk/projects/



# Culligran site selection search area, options and preferred site

## Culligran Substation site options

The search area for Culligran is relatively small due to the requirements to be within 1km of the existing Culligran Power Station. This area is defined by the following:

- Search area is surrounded by areas of woodland
- Steep terrain profiles to the north and west of the site options
- North of the River Fannar (tributary of River Beauly)
- Glen Strathfarnar Road is adjacent to site search location

For Culligran, four options were initially considered, from options A to D; with options A, B and C further progressed to detailed site selection. Option D performed the worst in terms of environmental preferences and would be difficult to construct, with option C concluded as offering best value overall.



# Culligran site selection search area, options and preferred site

Aerial view of the proposed site



## Engineering summary

Based on the initial technical assessment from the search area, options B and C were considered as the preferred options for the substation. Option B was selected as the preferred option for the substation.

Both sites located close to the existing substation and power lines, which would allow for a shorter length of new lines to be installed. Option B is located in a more open area, which would allow for a shorter length of new lines to be installed.

Option B would also impact on an ancient woodland area, which would require a shorter length of new lines to be installed. Option C would impact on a Special Protection Area, which would require a shorter length of new lines to be installed.

Option C would also impact on a Special Protection Area, which would require a shorter length of new lines to be installed. Option B would also impact on a Special Protection Area, which would require a shorter length of new lines to be installed.

Option B would also impact on a Special Protection Area, which would require a shorter length of new lines to be installed. Option C would also impact on a Special Protection Area, which would require a shorter length of new lines to be installed.

Option C would also impact on a Special Protection Area, which would require a shorter length of new lines to be installed. Option B would also impact on a Special Protection Area, which would require a shorter length of new lines to be installed.

Option B would also impact on a Special Protection Area, which would require a shorter length of new lines to be installed. Option C would also impact on a Special Protection Area, which would require a shorter length of new lines to be installed.

Option C would also impact on a Special Protection Area, which would require a shorter length of new lines to be installed. Option B would also impact on a Special Protection Area, which would require a shorter length of new lines to be installed.

Option B would also impact on a Special Protection Area, which would require a shorter length of new lines to be installed. Option C would also impact on a Special Protection Area, which would require a shorter length of new lines to be installed.

Option C would also impact on a Special Protection Area, which would require a shorter length of new lines to be installed. Option B would also impact on a Special Protection Area, which would require a shorter length of new lines to be installed.

Option B would also impact on a Special Protection Area, which would require a shorter length of new lines to be installed. Option C would also impact on a Special Protection Area, which would require a shorter length of new lines to be installed.

Option C would also impact on a Special Protection Area, which would require a shorter length of new lines to be installed. Option B would also impact on a Special Protection Area, which would require a shorter length of new lines to be installed.

Option B would also impact on a Special Protection Area, which would require a shorter length of new lines to be installed. Option C would also impact on a Special Protection Area, which would require a shorter length of new lines to be installed.



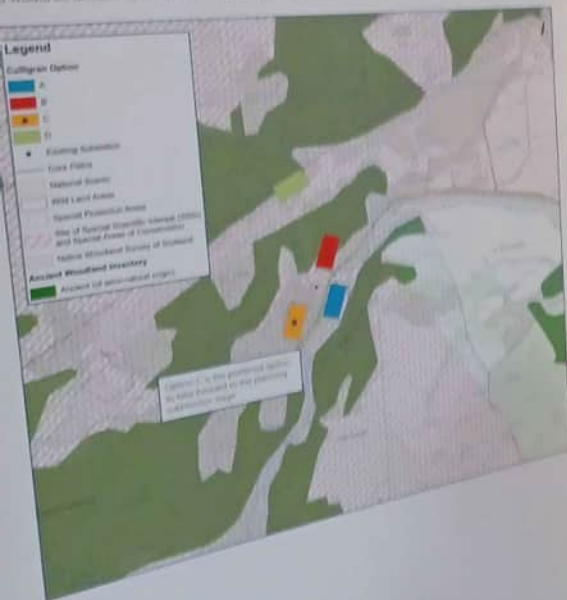
# Culligran site selection search area, options and preferred site

## Culligran Substation site options

The search area for Culligran is relatively small due to the requirement to be within 2km of the existing  
gran Power Station. This area is defined by the following:

Search area is surrounded by areas of woodland  
and terrain profiles to the north and west of the site option  
north of the River Tarr (tributary of River Beauty)  
near Strathfarrar Road is adjacent to the search location

Culligran, four options were initially considered, site options A to D, with options A, B and C later  
progressed to detailed site selection. Option D performed the worst in terms of environmental performance  
and would be difficult to construct, with option C considered as offering best value overall.



# Culligran site selection search area, options and preferred site

## Search area of the proposed substation



The search area is relatively small due to the requirement to be within 2km of the existing gran Power Station. This area is defined by the following:

**Proposing summary**

Based on the initial site selection process and the environmental performance of the four options, **options A, B and C** were considered as the preferred options for detailed site selection. Option D was considered as offering best value overall.

With the proposed search area being relatively small, the search area is defined by the following:

**Option A** is located in the search area, but is located in an area of woodland and is not considered as a preferred option.

**Option B** is located in the search area, but is located in an area of woodland and is not considered as a preferred option.

**Option C** is located in the search area, but is located in an area of woodland and is not considered as a preferred option.

**Option D** is located in the search area, but is located in an area of woodland and is not considered as a preferred option.

**Environmental summary**

All the options have similar environmental performance in terms of being located within the search area, in woodland, Special Protection Areas (SPAs), Local Nature Conservation Areas (LNCAs), Local Nature Conservation Sites (LNCSs), Special Areas of Conservation (SACs), Special Areas of Interest (SAIs), and Special Areas of Interest (SAIs).

**Option A** is located adjacent to the River Tarr and is located in an area of woodland. Option A is located in an area of woodland and is not considered as a preferred option.

**Option B** is located in an area of woodland and is not considered as a preferred option.

**Option C** is located in an area of woodland and is not considered as a preferred option.

**Option D** is located in an area of woodland and is not considered as a preferred option.





## Handling and info



Everyb  
to enc  
around  
All info  
presen  
with ot



Howeve  
engage  
you spe  
stakeho  
feedback  
subsequ  
this. Inst  
we will d  
broad cat  
"Landown  
care to av



We routi  
our engag  
collaborati  
Please let u  
be include

Thank you  
feedback a



Scottish & Southern  
Energy Networks

### The consultation process

Engagement is at the heart of our business. We want to hear from you about what we can do to improve our services and how we can better support you.



What we're consulting on today

Our new business plan for 2023-2028 sets out our vision for the future. We want to hear from you about what we can do to improve our services and how we can better support you.

www.scottishandsouthern.co.uk/energy-networks-consultation

Scottish & Southern  
Energy Networks

### The pathway to 2030



Our new business plan for 2023-2028 sets out our vision for the future. We want to hear from you about what we can do to improve our services and how we can better support you.

Scottish & Southern  
Energy Networks

### Indicative substation layout and elevations



Our new business plan for 2023-2028 sets out our vision for the future. We want to hear from you about what we can do to improve our services and how we can better support you.

Scottish & Southern  
Energy Networks

### Electricity use process

Our new business plan for 2023-2028 sets out our vision for the future. We want to hear from you about what we can do to improve our services and how we can better support you.







Project need and overview

### Project need and overview

Project need and overview



Project need and overview









## APPENDIX G: PUBLIC CONSULTATION EVENT 2 NEWSPAPER ADVERTS

# SNP lacking 'will' to reform taxation

BY NEIL POORAN

A council tax revaluation for homes in Scotland is needed soon to meet child poverty targets, an advisory commission has said.

The Poverty and Inequality Commission says it is one of a series of measures needed to improve the tax system.

The commission was set up in 2017 by the Child Poverty (Scotland) Act to advise the government on measures to improve the lives of the worst off in the country and close the gap between the richest and poorest.

In a report released yesterday, it recommended bringing wealth as well as

income into the scope of taxation, as part of a long-term solution to putting public finances on a sustainable footing.

Currently, council tax is based on property values from 1991 and critics say it has a regressive effect, leading to poorer people paying more.

The commission's report praised the "progressive" Scottish income tax system, which has separate bands to the rest of the UK.

However, commissioner Alex Cobham said further action on tax is needed if ambitious targets on reducing poverty by 2030 are to be met.

Mr Cobham, an economist who is also chief

executive of the Tax Justice Network, said: "There's no question that this is technically the right thing to do. What's been lacking is the political will.

"I think we're at a point now where if the Scottish Government were to decide not to do this, because it is politically difficult, they're effectively deciding to miss their own child poverty targets."

He said it is important to start this process in the upcoming Scottish Budget, as well as ensuring those on lower incomes do not suffer as a result.

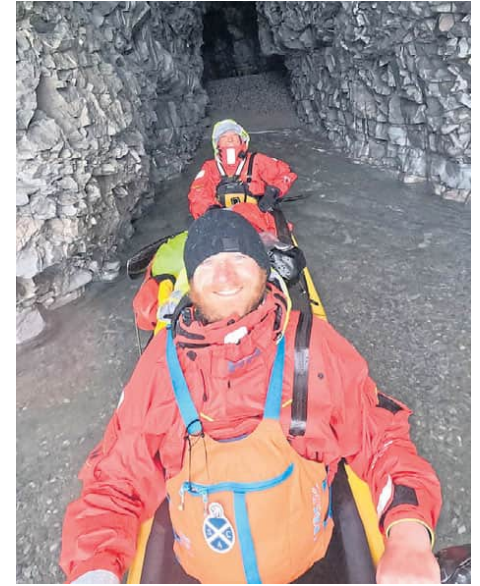
Mr Cobham said: "It is more than feasible, I think it's necessary." The report says the government

should ensure all land and property is properly registered, and work on a replacement for council tax should start immediately.

Ahead of the next Scottish Budget, First Minister Humza Yousaf has said "difficult decisions" on tax will need to be made.

Responding to the commission's recommendations, Deputy First Minister Shona Robison said: "I welcome this report.

"A decade of austerity, economic mismanagement by the UK Government, and a hard Brexit have all contributed to one of the most challenging financial situations since devolution."



## Kayaker's Arctic roll

Adventurer Mark Agnew, from Edinburgh, has achieved two world records by kayaking the Arctic Ocean's treacherous Northwest Passage. It took Mark three months to complete the expedition, during which he had to deal with waves as big as 15ft high, becoming perilously trapped in ice and coming face to face with a polar bear.



Scottish & Southern  
Electricity Networks

TRANSMISSION

## West of Beaulay Asset Replacement projects Glen Strathfarrar VISTA

### Information and consultation events

SSEN Transmission are holding public events for the West of Beaulay Asset Replacement projects required at Deanie, Culligran, Aigas and Kilmorack following initial consultations throughout 2022. All have ageing assets (approximately 60 years old), which need to be replaced to meet modern standards and to provide reliability of supply. These events will detail our final proposals for Culligran and Deanie sites as part of the statutory Pre-Application Consultation (PAC) which is required for major planning applications.

We will also introduce, consult and seek feedback on new selected sites for Aigas and Kilmorack following public feedback provided last year.

In addition, the project team will be sharing proposals regarding our Glen Strathfarrar VISTA (Visual impact of Scottish Transmission Assets) project, which would see around 4km of the existing 132kV overhead line in the area undergrounded from the new Deanie substation.

The project team will be in attendance to answer any questions and discuss the details of these proposed projects during our drop-in public events, where we will welcome your feedback on our proposals.

If you have any questions, please do not hesitate to contact the Community Liaison Manager:

**Sally Cooper**

Community Liaison Manager, 10 Henderson Road, Inverness, IV1 1SN (Return address)

📧 [sally.cooper@sse.com](mailto:sally.cooper@sse.com) 📱 SSEN Community 📞 +44 (0) 7918 470281 🐦 @SSETransmission

The public events will be taking place on:

**Monday 23 October,**  
5pm - 8pm

Cannich Hall, IV4 7LJ

**Tuesday 24 October,**  
11am - 1pm

Cannich Hall, IV4 7LJ

**Wednesday 25 October,**  
2pm - 7pm

Kilmorack Hall, IV4 7AQ



Visit the project website by scanning the QR code or by using the following URL:

<https://bit.ly/3EXOrmU>



# Paintball attacker must pay victims

BY JOANNE WARNOCK

An Elgin man who opened fire on a group of children with a paintball gun in revenge for them playing knock-door-run has been ordered to pay his young victims' compensation.

Joe Taylor, 29, admitted the "gangster-style" attack on three youngsters - two 12-year-old boys and an eight-year-old girl - and now has 28 days to pay each of them £250.

They had been playing knock-door-run on January 20 when they turned up at his home.

As revenge, he chased after the children in his car before cornering them in a car park, where he then

opened fire with his paintball gun, leaving them "covered in bruises" and terrified.

Last month Taylor agreed to a late plea bargain and admitted to three of the four charges against him.

The mum of one of the boys, who cannot be named for legal reasons, had said she was relieved her son did not have to give evidence as part of a trial.

She said the group had been "innocently" playing knock-door-run, but events took a turn for the worse after they knocked on the door of Taylor's home in the town's Bain Avenue.

She said: "Our son admits he did kick the door, but he went back to apologise

when he saw how angry he was."

However, the apology was not accepted and Taylor got in to his car and began chasing the children.

"The kids made a run for it," the mum explained.

"But he managed to corner them in a car park.

"He rolled his window down and opened fire with the paintball gun.

"At first, they did not know it was a paintball gun - they were all terrified. He showed no remorse at all.

"We are relieved now that they didn't have to give evidence - but we have had this worry and anxiety thinking they would have to."

She said she and the

mother of one of the other boys went round to Taylor's house to confront him.

She said: "We asked him if he had shot at our kids, and he just laughed.

"He showed no remorse at all."

The parents then contacted the police to report the incident.

"They weren't hurting anyone," she went on.

"I'm just so relieved that it didn't get dragged through the court - the whole thing has just been very traumatic."

Sheriff Fleetwood sentenced Taylor to a compensation order to pay £250 to each of the three children and gave him 28 days in which to do so.



'NO REMORSE': Joe Taylor outside the court.



Scottish & Southern  
Electricity Networks

TRANSMISSION

## West of Beaulay Asset Replacement projects Glen Strathfarrar VISTA

### Information and consultation events

SSEN Transmission are holding public events for the West of Beaulay Asset Replacement projects required at Deanie, Culligran, Aigas and Kilmorack following initial consultations throughout 2022. All have ageing assets (approximately 60 years old), which need to be replaced to meet modern standards and to provide reliability of supply. These events will detail our final proposals for Culligran and Deanie sites as part of the statutory Pre-Application Consultation (PAC) which is required for major planning applications.

We will also introduce, consult and seek feedback on new selected sites for Aigas and Kilmorack following public feedback provided last year.

In addition, the project team will be sharing proposals regarding our Glen Strathfarrar VISTA (Visual impact of Scottish Transmission Assets) project, which would see around 4km of the existing 132kV overhead line in the area undergrounded from the new Deanie substation.

The project team will be in attendance to answer any questions and discuss the details of these proposed projects during our drop-in public events, where we will welcome your feedback on our proposals.

If you have any questions, please do not hesitate to contact the Community Liaison Manager:

**Sally Cooper**

Community Liaison Manager, 10 Henderson Road, Inverness, IV1 1SN (Return address)

✉ sally.cooper@sse.com    🌐 SSEN Community    ☎ +44 (0) 7918 470281    🐦 @SSETransmission

The public events will be taking place on:

**Monday 23 October,**  
5pm - 8pm  
Cannich Hall, IV4 7LJ

**Tuesday 24 October,**  
11am - 1pm  
Cannich Hall, IV4 7LJ

**Wednesday 25 October,**  
2pm - 7pm  
Kilmorack Hall, IV4 7AQ



Visit the project website by scanning the QR code or by using the following URL:

<https://bit.ly/3EXOrmU>

# Notice Board

- ### Notices
- |                       |                  |
|-----------------------|------------------|
| Anniversaries         | Notices          |
| Birthdays             | Off To School    |
| Charities             | Pets In Memory   |
| Church Notices        | Personal Seasons |
| Congratulations       | Greetings        |
| Contracts and Tenders | Public Notices   |
| Engagements           | Retirement       |
| Father's Day          | Special Messages |
| Graduation            | Thank You        |
| Mother's Day          | Wedding Notices  |

### Public Notices

**The Town and Country Planning (Development Management Procedure) (Scotland) Regulations 2013 (As Amended) Regulation 7**  
**NOTICE OF PRE-APPLICATION FINAL PUBLIC EVENT**

Scottish Hydro Electric Transmission plc (the Applicant), operating and known as Scottish and Southern Electricity Networks Transmission (SSEN Transmission), hereby submits notification of pre-application consultation for replacement substation developments: referred collectively and forming part of 'West of Beaulay - Asset Replacement Projects'.

The proposed development site is located near to existing Deanie Hydro Power Station (IV47JX) (//buggy.reminder.solutions) and comprises the following:

**STANDALONE REPLACEMENT SUBSTATION INCORPORATING: A NEW TRANSFORMER BUILDING, A NEW CONTROL BUILDING, ASSOCIATED PLANT AND INFRASTRUCTURE WITH PERMANENT ACCESS AND ANCILLARY DEVELOPMENT**

A Proposal of Application Notice (PAN) was submitted to The Highland Council (THC) for this proposed development in October 2022. The PAN reference is: 22/03238/PAN.

The proposed development site is located to the west of Culligran (IV47JT) Hydro Power Station (//deflect.attention.blend) and comprises the following:

**STANDALONE REPLACEMENT SUBSTATION INCORPORATING: A NEW TRANSFORMER BUILDING, A NEW CONTROL BUILDING, ASSOCIATED PLANT AND INFRASTRUCTURE WITH PERMANENT ACCESS AND ANCILLARY DEVELOPMENT**

A Proposal of Application Notice (PAN) was submitted to The Highland Council (THC) for this proposed development in October 2022. The PAN reference is: 22/4838/PAN.

Public consultation events on these individual proposals were originally held:

- Monday 31 October 2022, 3pm - 7pm** at Kilmorack Hall, IV4 7AQ
  - Tuesday 1 November 2022, 3.30pm - 6.45pm** at Cannich Hall, IV4 7LJ
- Details of the final public feedback events are as follows:
- Monday 23 October 2023, 5pm - 8pm** at Cannich Hall, IV4 7LJ
  - Tuesday 24 October 2023, 11am - 1pm** at Cannich Hall, IV47LJ
  - Wednesday 25 October, 2pm - 7pm** at Kilmorack Hall, IV47AQ

Further information may be viewed on the project website <https://www.ssen-transmission.co.uk/projects/project-map/west-of-beaulay---asset-replacement-projects/> and from Sally Cooper, Community Liaison Manager, Scottish & Southern Electricity Networks on 07918 470281, by email [sally.cooper@sse.com](mailto:sally.cooper@sse.com) or in writing to Sally Cooper, Community Liaison Manager, Scottish and Southern Electricity Networks, 10 Henderson Road, Inverness, IV1 1SN.

Please note that any comments made to the Applicant are not representations to The Highland Council (THC). There will be opportunity to make representations to the local planning authority following the submission of the separate planning applications.

Callum Petrie  
For and behalf of Scottish Hydro Electric Transmission Plc.

**Personal**

**FRIENDLY MALE**

60s, would like to meet similar very down-to-earth lady, aged 65 to 75 for time and fun together. I drive, also have my own home.

**To find out more my contact number is 07497 394632.**

**To insert your notice in**

**The Press and Journal**

Call 01224 691212

**The Press and Journal Classified**

### Public Notices

**The Town and Country Planning (Development Management Procedure) (Scotland) Regulations 2013 (As Amended) Regulation 7**  
**NOTICE OF PRE-APPLICATION CONSULTATION**

Scottish Hydro Electric Transmission plc (the Applicant), operating and known as Scottish and Southern Electricity Networks Transmission (SSEN Transmission), hereby submits notification of pre-application consultation for a proposed development relating to a required replacement substation, in association with three further substation replacement developments: referred collectively as 'West of Beaulay - Asset Replacement Projects'.

The proposed development site is located at land north of Kilmorack Hydro Power Station IV4 7AL.

A public consultation event on this proposal will be held on:

**Wednesday 25 October, 2pm - 7pm**  
**at Kilmorack Hall, IV47AQ**

Details of further consultation will be published in due course.

Further information may be viewed on the project website: <https://www.ssen-transmission.co.uk/projects/project-map/west-of-beaulay---asset-replacement-projects/>


You can submit comments on the proposals to the Applicant at this stage either at the event mentioned above, by emailing [sally.cooper@sse.com](mailto:sally.cooper@sse.com) or in writing to Sally Cooper, Community Liaison Manager, Scottish and Southern Electricity Networks, 10 Henderson Road, Inverness, IV1 1SN.

Please note that any comments made to the Applicant are not representations to The Highland Council (THC). There will be opportunity to make representations to the local planning authority following the submission of the application.

Callum Petrie  
For and behalf of Scottish Hydro Electric Transmission Plc.

# Retail Shop

- Pets and Accessories
- Pets and Accessories




**COCKER SPANIEL PUPPIES**

Hello to all from the old Merridean Kennels. We have had a litter of gorgeous orange and roan chocolate pups. We are looking for loving families to give them a happy life.

**Phone 01467 642429 for more details.**

---



**EXOTIC LONG HAIR PERSIAN KITTENS FOR SALE**

Various colours, fully vaccinated and health checked. Health issues reduced price

**Please call Nan, Tel: 07848 909950**

---

**To book your advert call**

**01224 691212**

*The Press and Journal Classified*

# Travel

Campsites and Caravan Parks



**SCOTLAND'S BEST LODGES & STATIC CARAVANS**

**PARK OPEN ALL YEAR**

FOR ALL HOLIDAY HOME SALES

VISIT: [WWW.P-R.SCOT](http://WWW.P-R.SCOT)

Or E: [stuart@p-r.scot](mailto:stuart@p-r.scot)

# Services

General Services

**ROOFING REPAIRS FROM £49**

**GUTTER CLEANING FROM £25**



**ROOF SHIELD**

- SLATE & TILE REPAIRS
- GUTTERS CLEANED & REPAIRED
- GUTTERING UPVC SYSTEM INSTALLATION
- RIDGE TILE REPAIRS OR REPLACEMENT
- DRY RIDGE & DRY VERGE SYSTEM INSTALLATION
- FLAT ROOF REPAIRS OR REPLACEMENT
- ALL ASPECTS OF CEMENT WORK
- ROOF CLEANING & COLOUR COATING

**Tel: 07908 513531**

email: [roof-shield@outlook.com](mailto:roof-shield@outlook.com)  
Website: [www.roof-shield.uk](http://www.roof-shield.uk)

Inspirational magazine subscriptions

FOR ALL THE FAMILY THIS

# CHRISTMAS

SHOP NOW OPEN!



**SAVE 33%**



**SAVE 33%**



**SAVE 60%**

**FREEPHONE 0800 318 846**

UK only. Lines open 9am to 5pm Mon - Fri.

**ONLINE** [dcthomsonshop.co.uk/gifts](http://dcthomsonshop.co.uk/gifts)

\* Available to recipients within the UK when paying by Direct Debit. Available to new subscribers only. UK bank accounts only.

SCAN ME



### CONDITIONS OF ACCEPTANCE OF ADVERTISEMENTS

The Publishers retain full discretion as to the contents of "The Press and Journal" and reserve the full right to refuse to publish an advertisement or omit or suspend any advertisement for which an order has been accepted in every case without stating any reasons for so doing.

The Publishers shall not be liable for any error, omission or inaccuracy in published advertisements, nor do they accept any liability for any loss which the Advertiser may allege to have been caused by any such error, omission or inaccuracy.

Copy, artwork, photographic prints and other materials supplied in connection with advertisements shall be subject to the approval of the Publishers. All space will be charged at the appropriate rate prevailing at the time of publication and such rates may be altered at any time.

The Publishers reserve the right to change the classification of any advertisement accepted if in the opinion of the Publisher that advertisement has been placed in an incorrect classification.

Aberdeen Journals Ltd. and other members of the group will use your information for administration, customer services, and targeted marketing. We will not provide your details to other third parties unless required by law.

We may contact you by mail, email, telephone or fax to let you know about other products, services or promotions which may be of interest to you.

Full details of our Conditions of Acceptance can be obtained at our office:

Aberdeen Journals Ltd, YourAds, P.O. Box 43,  
1 Marischal Square, Broad Street, Aberdeen AB10 1BL

*The Press and Journal*

**Classified**



# The D & J

275 YEARS AS  
YOUR VOICE

MONDAY,  
OCTOBER 16, 2023  
£1.90

## JACKPOT

£200 OF  
SHOPPING  
GIFT CARDS  
TO BE WON



SEE  
PAGE  
22

## Tartan Army's joy as Scots book Euros spot

See back page – plus 16 more pages of sport in Score pullout



# SNP activists demand party chiefs commit to dualled A96

## Conference set for road vote fight after indy plans backed

BY ADELE MERSON

SNP grassroots members in the north-east will tomorrow ratchet up the pressure on party chiefs over A96 dualling.

Activists in Peterhead and Elgin have joined forces to put the issue to the vote at the SNP conference in Aberdeen.

There are fears ministers are pulling back on a long-standing commitment to fully dual the deadly stretch between Aberdeen and Inverness due to the power-sharing deal with the Greens.

David Birkett, convener of the SNP's Peterhead branch, says fully dualling the A96, as well as the A9, would be "transformational" for communities.

SNP Elgin City North councillor Jérémie Fernandes said: "The commitment of the SNP is to dual the road. We want the party to affirm that position."

On the opening day of the conference yesterday, First Minister Humza Yousaf was backed by party members on his independence strategy.

They supported his motion calling for Holyrood to begin immediate negotiations with Westminster "to give democratic effect to Scotland becoming an independent country" if the party wins a majority of Scottish seats – and not a majority of votes – in the next general election.

Full coverage: Pages 10-12



## Yousaf and wife hold on to hope amid Gaza torment

First Minister Humza Yousaf embraced his wife after she spoke of her fears for her own family in Gaza and the Palestinian people.

Nadia El-Nakla, who is an SNP councillor, told of her despair over the deadly conflict between Israel and Hamas in a speech at the SNP

conference in Aberdeen yesterday.

Her Dundee-based parents are trapped in Gaza after going there to visit relatives.

She said: "What we are watching is an unimaginable horror. Every person in Gaza is waiting to die."

Full story: Pages 14&15

# Thistle

HOME IMPROVEMENTS SHOWROOM  
WOODSIDE ROAD - BRIDGE OF DON - ABERDEEN

FOR ALL YOUR HOME IMPROVEMENT NEEDS UNDER ONE ROOF - OPEN 7 DAYS A WEEK!



www.thistle.group - 01224 706 555

*[THIS PAGE IS INTENTIONALLY LEFT BLANK]*