

## APPENDIX F: PUBLIC CONSULTATION EVENT 1 PHOTOS OF EVENT







Environmental considerations. Deanie area (River National, Sainsbury, Alca and Glen Affric) is close to the Central Highlands Water Land (2024).

The south of Deanie (Kilnwick) is located in Category C (Class B) Building. The main issue is that the main issue is that any potential impacts which could be considered as part of the design development. Mitigation measures may include screening for visual intrusion.

pe and how/where they will be seen is being

by natural landscape, with particular consideration of the Deanie area and West Glen Affric. Public Rights of Way and other recreational routes, including several (listed buildings).

Public Rights of Way and the location of sympathetic, views opportunities for screening views of the

**Cultural heritage**

The preferred site option at Kilnwick has the potential for setting impacts on listed buildings.

There is also the potential for impacts on known and unknown archaeological remains. Setting impacts will be considered as part of the design development. Mitigation measures may include screening for visual intrusion.

Land use, access and recreation

No long-distance routes are identified within the sites under consideration. Core paths and the public right of way are present within both the Deanie and Cullinston sites options.




[@ssencommunity](#)  
[@ssetransmission](#)  
[#west-of-beauty-asset-replacement-projects](#)

**Scottish & Southern Electricity Networks**  
TRANSMISSION

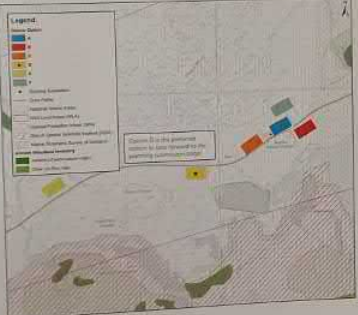
## Deanie site selection search area, options and preferred site

**Deanie Substation site options**

The search area for Deanie is relatively small due to the requirement to be within 1km of the existing Deanie Hydro Electric Power Station. This area is defined by the following:

- Located south-west of Loch Broomochan.
- Deepen provides to the west and north of the existing Deanie Hydro Electric Power Station.
- There is an area of woodland to the south-west as the River Tarr ( tributary of River Bealey), although the search area shall not extend within any woodlands.
- Glen Sualfhar Road is adjacent to all site options.

The options were originally considered at Deanie (sites A to F) as part of the initial site selection stage. Options A, B and D were then narrowed down to the preferred site selection due to a range of engineering and environmental constraints which conflicted to the other options.




[@ssencommunity](#)  
[@ssetransmission](#)  
[#west-of-beauty-asset-replacement-projects](#)

**Scottish & Southern Electricity Networks**  
TRANSMISSION

## Deanie site selection search area, options and preferred site

**Aerial view of the proposed substation**



**Summary**

On balance, when considering the engineering, environmental and cost criteria together, the preferred site to be taken forward to planning application submission is site option D.

**Engineering summary**

The initial technical assessment undertaken identified options A and D as the preferred locations to build the proposed new substation. Subsequent investigation into the feasibility of construction of the substation at option A immediately indicates that the existing substation, found that it would be prohibitively expensive, if not impossible to build free without significant upgrades. This, in effect, would require the generating hydro power station to be disconnected from the grid for the duration of construction and the new substation area commissioned and ready for entry into service.

While option D presents its own challenges due to the distance from the power station, which increases the length of the 11kV cable while connecting the generated supply to the grid via the new substation. The cable spanned over three miles over the steep side of the substation and taking it most commercially manageable distance not to mention the reduced capacity limits to deliver power to and from. If any duration of construction.

Site D also offers considerable spare space for a construction compound and permanent access to be gained to help operate the substation and reduce the overall visual and environmental impact.

**Environmental summary**

All site locations have similar environmental constraints to be considered against the same criteria. As the substation (power production area) will be primarily underground (11kV) north of the Glen Sualfhar Road (public right of way) and the substation area will be primarily underground (11kV) north of the River Tarr (tributary of River Bealey) and the substation area will be primarily underground (11kV) north of the River Tarr (tributary of River Bealey) and the substation area will be primarily underground (11kV) north of the River Tarr (tributary of River Bealey).

Site option A is not considered to be the preferred option due to the increased length of the 11kV cable while connecting the generated supply to the grid via the new substation. The cable spanned over three miles over the steep side of the substation and taking it most commercially manageable distance not to mention the reduced capacity limits to deliver power to and from. If any duration of construction.

Site option D is considered to be the preferred option due to the increased length of the 11kV cable while connecting the generated supply to the grid via the new substation. The cable spanned over three miles over the steep side of the substation and taking it most commercially manageable distance not to mention the reduced capacity limits to deliver power to and from. If any duration of construction.

[@ssencommunity](#)  
[@ssetransmission](#)  
[#west-of-beauty-asset-replacement-projects](#)









## Engineering and economic considerations

Our Transmission Operation science requires us to provide best value for customers and GB consumers. As a natural monopoly, SSEN Transmission are closely regulated by the GB energy regulator Office of Gas and Electricity Markets (Ofgem), who determine how much revenue we are allowed to earn for constructing, maintaining and operating our transmission network.

These costs are shared between all those using the transmission system, including generation developers and electricity consumers. We therefore work to strict price controls which means the following engineering and economic considerations form a key part of our site selection process:

### Construction

The costs and practicalities associated with constructing new platforms can vary considerably with location, depending on ground conditions, topography and underlying geology.

This means considering access and delivery routes, space for laydown and construction compounds, alongside consideration of future use. The topography and underlying ground conditions dictate how much material must be removed and moved to create a level site with a suitable base, importing and exporting large quantities of aggregates and soil is expensive and is not environmentally desirable due to impacts associated with transport. We can also use topography to our advantage, utilising existing ridges, mounds and slopes to provide screening for the site. This can reduce the amount of additional hard and soft landscaping required.

### Operations

Our sites will be operational for a long time and will require ongoing maintenance and repairs by our Operations Team.

They need to be able to access the site easily and safely in all weathers. More exposed sites will likely need more maintenance during their life. In addition, where we have created or enhanced local habitats, we take on the responsibility for long term maintenance of landscaping to ensure it is successful.

Any potential impacts to the operation of the existing network and security of supply for our customers (both demand and generation) must be carefully considered and minimised where possible.

### Noise mitigation/technology

The plant and equipment used in the construction and operation of each substation will vary in cost.

Site location can drive the use of alternative technologies, driven by factors such as wind speed, altitude, proximity to coast etc.

The available footprint may also dictate the use of alternative technologies in order to fit the required plant and equipment, which can come in a range of sizes and shapes, which may also need to be housed indoors at an additional cost. The choice between cable and overhead line in connecting the site with the wider network will also affect the cost of the project.

It is unlikely that any significant noise mitigation will be required across the four sites due to the relatively small size of the transmission and substation footprint. However, without operational noise and background noise being a real issue, then mitigation would likely be in the form of enclosures or walls that are designed to absorb any noise above and below the fence.

### Connections

Each new substation requires to be connected to both the affected existing power station and ESDV overhead lines, so proximity to both of these is desirable.

The further away from these points of connection the proposed site is, the greater the engineering challenges and costs are. More underground cables, which are usually installed in trenches, are more expensive than overhead overhead lines.

By minimising the HVV cable route lengths, we are able to make more efficient use of the minimum string that is generated at each Hydro Power Station.

Given the field location of the seven stations, reducing any new overhead infrastructure is a key consideration.

### Forestry and biodiversity

The cost and environmental impacts of felling trees and any compensatory planting must be factored into the assessment.

SSEN Transmission are committed to a no net loss of forestry and biodiversity on projects. Choosing a site with more trees felling or in more ecologically rich habitats will incur greater costs, compensatory planting and habitat creation requirements.

## Environmental considerations

Due to the location of the projects, there are a number of environmental considerations. Both Cullintran and Cullintran are both located within or close to a Strategic Special Protection Area (SSPA), Area and Countryside Access Site of Special Interest (Countryside Access Site of Special Interest).

Strathgairn Special Area of Conservation (SAC) is also located nearby. The appearance of the substations will be assessed during site selection and any potential concerns the population have been considered. These include potential impacts on visual amenity and flood risk.

### Landscaping and visual designations

The appearance of the substations will be carefully considered.

Site selection has also been guided by the following:

- Create and Cullintran projects in relation to the importance of Countryside Access Sites
- Access routes in the sensitive landscape
- Landscape character, visual amenity and flood risk

Mitigation is anticipated to include using of hard and soft landscaping with the natural proposed developments from top visual routes.

### Hydrology and geology

The following hydrological aspects are being considered as part of the site selection process for each of the substations:

- Surface water supplies
- Groundwater discharge potential
- Geology (COWT)
- Proximity to Flood Risk (at least 100m from the site)
- If any development sites are hydrologically linked to the site

All hydrological site drainage plans for both the construction and operational phases will be developed to ensure no adverse impacts on the surrounding landscape.

### Ecology and ornithology

Several ecology surveys and assessments have been carried out covering:

- Habitats, including biodiversity
- Protected species, including suitability for badger, otter, bat, red squirrel and pine marten being undertaken
- Breeding bird surveys are in the process of being undertaken

Tree felling will be required for the preferred site at Cullintran, and possibly minor felling of biodiversity rich habitats will be achieved through habitat improvement and additional planting at agreed locations.



## Environmental considerations

Due to the location of the projects, there are a number of key environmental considerations. Deanie and Culligran are both located within or close to the Glen Strathlaran National Scenic Area and Glen Affric to Strathglass Special Protection Area (SPA). They are also located close to the Central Highlands Wild Land Area and Glen Strathlaran Site of Special Scientific Interest (SSSI).

Strathglass Special Area of Conservation (SAC) is located to the south of Deanie. Kilmorack is located in close proximity to four Category B listed buildings and one Category C listed building. The main areas of assessment during site selection are outlined below. It should be noted that any potential impacts which concern the population have been considered under the umbrella of the "environmental considerations". These include potential impacts on visual amenity, noise, proximity to dwellings, recreational receptors and flood risk.

### Landscape and visual designations

The appearance of the substations within the landscape and how/where they will be seen is being carefully considered.

Site selection has also been guided by effects on nationally valued landscapes, with particular consideration of:

- Deanie and Culligran projects in relation to the National Scenic Area and Wild Land Areas.
- The importance of Glen Strathlaran Road Core Path, Public Rights of Way and other recreational access routes in the sensitive landscape.
- Landscape character, visual amenity and heritage assets (including several listed buildings).

Mitigation is anticipated to include using the existing landform features and the creation of sympathetic hard and soft landscaping, with the natural landform offering opportunities for screening views of the proposed developments from key visual receptors.

### Hydrology and geology

The following hydrological aspects are being considered as part of the site selection process for each of the substations:

- Private water supplies
- Groundwater dependent terrestrial ecosystem (GWDTA)
- Potential for flood risk (particularly in Affric)
- If any waterlogged sites and hydrologically linked to the site.

An appropriate site drainage plan for both the construction and operational phases will be developed to ensure no adverse impacts on the surrounding water environment.

### Ecology and ornithology

Several ecology surveys and assessments have been carried out covering:

- Habitats, including biodiversity.
- Protected species, including suitability for badger, otter, bat, red squirrel and pine marten.
- Breeding bird surveys are in the process of being undertaken.

Tree felling will be required for the preferred site at Culligran, and possibly minor thinning at Affric. All projects will seek to achieve no net loss of biodiversity which will be achieved through habitat improvement and additional planting at agreed locations.

### Cultural heritage

The preferred site option at Kilmorack has the potential for setting impacts on listed buildings.

There is also the potential for impacts on known and unknown archaeological remains. Setting impacts will be considered as part of the design development. Mitigation measures may include screening for visual intrusion.

### Land use, access and recreation

No long-distance routes are identified within the sites under consideration. Core paths and public rights of way are present within both the Deanie and Culligran site options.



Golden eagle



Red squirrel

@ssencommunity

@ssetransmission

[www.ssen-transmission.co.uk/projects/west-of-beauty-asset-replacement-projects/](http://www.ssen-transmission.co.uk/projects/west-of-beauty-asset-replacement-projects/)



## Deanie search and

Deanie Subst

The search are

- Located north
- Sensitive terrain
- There is an ar
- Glen Strathlaran

Site options were Options A, B and of engineering a



www.ssen-transmission.co.uk



# Selection options site

requirement to be within 1km of the existing and by the following:

Deanie Hydro Electric Power Station (the River Farrar (tributary of River Beaulieu) of woodland

to [A to F] as part of the initial site selection (stage 1) and the preferred site selection due to scoring better in terms of woodland compared to the other options

The preferred site selection was forward to the permission stage

[@ssencommunity](https://www.ssen-transmission.co.uk/projects/west-of-beaulieu-asset-replacement-projects/)  
[@ssetransmission](https://www.ssen-transmission.co.uk/projects/west-of-beaulieu-asset-replacement-projects/)  
[www.ssen-transmission.co.uk/projects/west-of-beaulieu-asset-replacement-projects/](https://www.ssen-transmission.co.uk/projects/west-of-beaulieu-asset-replacement-projects/)

Scottish & Southern Electricity Networks

TRANSMISSION

## Deanie site selection search area, options and preferred site

Aerial view of the proposed substation

**Summary**

On balance, when considering the engineering, environmental and cost criteria together, the preferred site to be taken forward to planning application submission is site option D.

**Engineering summary**

The initial technical assessment undertaken identified **options A and D** as the preferred locations to build the proposed new substation. Subsequent investigation into the feasibility of construction of the substation at **option A** immediately adjacent to the existing substation, found that it would be prohibitively challenging, if not impossible to build here without significant outages. This, in effect, would require the generating hydro power station to be disconnected from the grid for the duration of construction until the new substation was commissioned and ready for entry into service.

While **option D** presents its own challenges due to the distance from the power station, which increases the length of the 110kV cable route connecting the generated supply to the grid via the new substation. The costs associated with these issues over the design life of the substation and cabling is more commercially manageable than the revenue that would be lost by (than) the revenue that would be lost by the customer not to mention the reduced capacity of the grid to deliver power to end users, if we were to disconnect the power station for the duration of construction.

**Site D** also offers considerable extra space for a construction compound and permanent screening to be planned to help conceal the substation and reduce the overall visual and environmental impact.

**Environmental summary**

All site options have similar environmental constraints in terms of being located within the Cairn A'Beinn to Strathconon Special Protection Area (SPA), in close proximity to approximately 1,000m of the Cairn A'Beinn SPA, the Cairn A'Beinn Special Scientific Interest (SSI) and Strathconon Special Area of Conservation (SAC). No other options are likely to create any significant visual impacts. None of the sites under consideration here are designated sites or known cultural heritage assets within 5km.

Cairn A'Beinn Road (reference No: D1) Gate Firm passes the majority of the site and a main route of the options line to primarily impact the core with.

**Site option A** was considered to be the most preferred option to be investigated further at detailed design stage from an environmental perspective as this option is situated away from the existing substation, thereby helping to visualise the new site in the same location.

Due to the sensitivities associated with the substation site, options B and C were not further investigated as they were not considered to be the preferred site option. D was considered as the preferred site option considering the landscape, and visual sensitivities alongside other factors.

[www.ssen-transmission.co.uk/projects/west-of-beaulieu-asset-replacement-projects/](https://www.ssen-transmission.co.uk/projects/west-of-beaulieu-asset-replacement-projects/)  
[@ssencommunity](https://www.facebook.com/ssencommunity)  
[@ssetransmission](https://www.facebook.com/ssetransmission)  
[www.ssen-transmission.co.uk/projects/west-of-beaulieu-asset-replacement-projects/](https://www.ssen-transmission.co.uk/projects/west-of-beaulieu-asset-replacement-projects/)

Scottish & Southern Electricity Networks

TRANSMISSION

## Culligran site selection search area and preferred site

Culligran substation site options

the search area for Culligran is covering Culligran River Station. The area is defined by the following:

- Search area is bounded by area of 100m buffer to the right and left of the River Culligran
- Search area is bounded by area of 100m buffer to the right and left of the River Culligran
- Search area is bounded by area of 100m buffer to the right and left of the River Culligran

The preferred site selection was forward to the permission stage

[@ssencommunity](https://www.ssen-transmission.co.uk/projects/west-of-beaulieu-asset-replacement-projects/)  
[@ssetransmission](https://www.ssen-transmission.co.uk/projects/west-of-beaulieu-asset-replacement-projects/)  
[www.ssen-transmission.co.uk/projects/west-of-beaulieu-asset-replacement-projects/](https://www.ssen-transmission.co.uk/projects/west-of-beaulieu-asset-replacement-projects/)



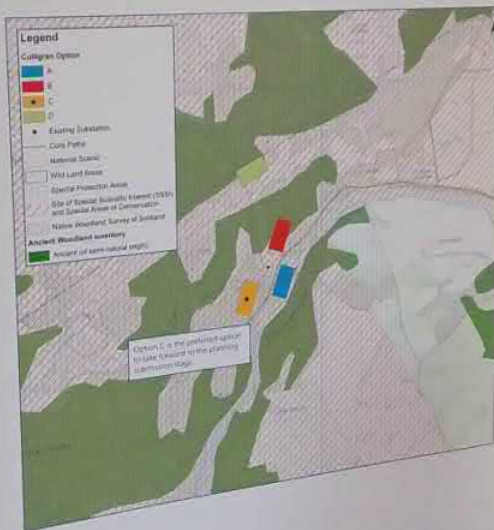
# Culligran site selection search area, options and preferred site

## Culligran Substation site options

The search area for Culligran is relatively small due to the requirement to be within 2km of the existing Culligran Power Station. The area is defined by the following:

- Search area is surrounded by areas of woodland
- Steep terrain profiles to the north and west of the site options
- North of the River Farrar (tributary of River Beauly)
- Glen Strathfarrar Road is adjacent to site search location

For Culligran, four options were initially considered, site options A to D, with options A, B and C further progressed to detailed site selection. Option D performed the worst in terms of environmental preference and would be difficult to construct, with option C concluded as offering best scope overall.



# Culligran site selection search area, options and preferred site

Aerial view of the proposed substation



## Engineering summary

Based on the initial technical assessment, the preferred option for the first construction phase is **Option B** and **Option C** with construction commencing from an engineering perspective to be determined by further investigation.

Both the preferred options for the existing substation and the proposed substation are located within the search area. Option B is located in the search area and is preferred to Option C due to its better suitability for construction, being more accessible to the existing substation and having a better access to the existing substation.

**Option B** would also require less material and generate less noise and vibration during construction than **Option C** due to its better accessibility to the existing substation and the search area.

Option C would require the best engineering for construction, being more accessible to the existing substation and having a better access to the existing substation.

Option C would require the best engineering for construction, being more accessible to the existing substation and having a better access to the existing substation.

Option C would require the best engineering for construction, being more accessible to the existing substation and having a better access to the existing substation.

Option C would require the best engineering for construction, being more accessible to the existing substation and having a better access to the existing substation.

Option C would require the best engineering for construction, being more accessible to the existing substation and having a better access to the existing substation.

Option C would require the best engineering for construction, being more accessible to the existing substation and having a better access to the existing substation.

Option C would require the best engineering for construction, being more accessible to the existing substation and having a better access to the existing substation.

Option C would require the best engineering for construction, being more accessible to the existing substation and having a better access to the existing substation.

Option C would require the best engineering for construction, being more accessible to the existing substation and having a better access to the existing substation.

Option C would require the best engineering for construction, being more accessible to the existing substation and having a better access to the existing substation.



# Culligran site selection search area, options and preferred site

## Culligran Substation site options

The search area for Culligran is relatively small due to the requirement to be within 500m of the existing  
Culligran Power Station. The area is defined by the following:

The search area is surrounded by areas of woodland  
and terrain profiles for the north and east of the site options  
north of the River Ferra tributary of River Beuly,  
and to the south of the River Beuly.  
The Strathfarrar Road is adjacent to site search locations.

At Culligran, four options were initially considered, but options A to D, with options A & B and C, were  
progressed to detailed site selection. Option D performed the worst in terms of environmental performance  
and would be difficult to construct, with option C considered as offering best value overall.



# Culligran site selection search area, options and preferred site

2016/17, 2017/18, 2018/19, 2019/20



The Culligran search area is relatively small due to the requirement to be within 500m of the existing Culligran Power Station. The area is defined by the following:

**Engineering Considerations**

Option D was the most difficult to construct due to the presence of a large area of woodland and the need to cross the River Ferra. Option C was the most difficult to construct due to the presence of a large area of woodland and the need to cross the River Ferra. Option B was the most difficult to construct due to the presence of a large area of woodland and the need to cross the River Ferra. Option A was the most difficult to construct due to the presence of a large area of woodland and the need to cross the River Ferra.

**Environmental Summary**

Option A is the preferred site due to its location in a relatively open area with minimal woodland. Option B is the preferred site due to its location in a relatively open area with minimal woodland. Option C is the preferred site due to its location in a relatively open area with minimal woodland. Option D is the preferred site due to its location in a relatively open area with minimal woodland.





## Handling and info



Everyb  
to enc  
around  
All info  
presen  
with ot



Howeve  
engage  
you spe  
stakeho  
feedback  
subsequ  
this. Inst  
we will d  
broad cat  
"Landown  
care to av



We routi  
our enga  
collaborati  
Please let u  
be include

Thank you  
feedback an



Scottish & Southern  
Energy Networks

### The consultation process

Engagement in detail

What we're consulting on



Scottish & Southern Energy Networks is currently consulting on the proposed new electricity distribution network for the Glasgow region. This network will be built to support the region's growing demand for electricity and to ensure a secure and reliable supply of power for the future.

The proposed network will include a range of new infrastructure, including substations, cables and poles. We are currently consulting on the proposed route for the new network and the locations of the new substations. We are also consulting on the proposed design of the new network, including the layout of the cables and poles.

We are currently consulting on the proposed design of the new network, including the layout of the cables and poles. We are also consulting on the proposed route for the new network and the locations of the new substations.

For more information, please visit our website at [www.scotneth.com](http://www.scotneth.com) or contact us on 0800 010 010.

Scottish & Southern  
Energy Networks

### The pathway to 2030




Scottish & Southern Energy Networks is currently consulting on the proposed new electricity distribution network for the Glasgow region. This network will be built to support the region's growing demand for electricity and to ensure a secure and reliable supply of power for the future.

The proposed network will include a range of new infrastructure, including substations, cables and poles. We are currently consulting on the proposed route for the new network and the locations of the new substations. We are also consulting on the proposed design of the new network, including the layout of the cables and poles.

We are currently consulting on the proposed design of the new network, including the layout of the cables and poles. We are also consulting on the proposed route for the new network and the locations of the new substations.

Scottish & Southern  
Energy Networks

### Indicative substation layout and elevations



Scottish & Southern Energy Networks is currently consulting on the proposed new electricity distribution network for the Glasgow region. This network will be built to support the region's growing demand for electricity and to ensure a secure and reliable supply of power for the future.

The proposed network will include a range of new infrastructure, including substations, cables and poles. We are currently consulting on the proposed route for the new network and the locations of the new substations. We are also consulting on the proposed design of the new network, including the layout of the cables and poles.

We are currently consulting on the proposed design of the new network, including the layout of the cables and poles. We are also consulting on the proposed route for the new network and the locations of the new substations.

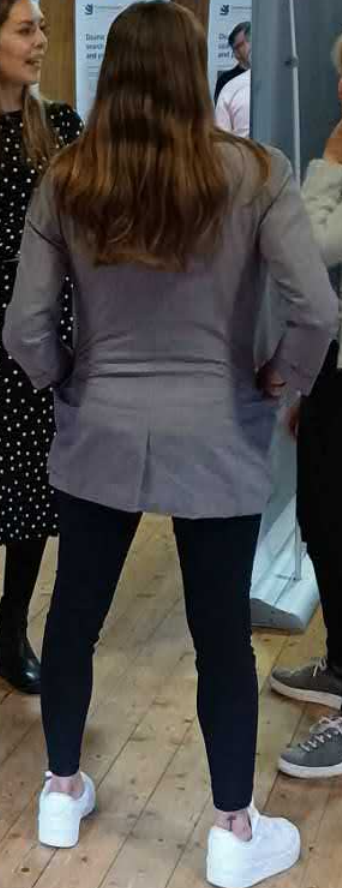
Scottish & Southern  
Energy Networks

### Consultation process

Scottish & Southern Energy Networks is currently consulting on the proposed new electricity distribution network for the Glasgow region. This network will be built to support the region's growing demand for electricity and to ensure a secure and reliable supply of power for the future.

The proposed network will include a range of new infrastructure, including substations, cables and poles. We are currently consulting on the proposed route for the new network and the locations of the new substations. We are also consulting on the proposed design of the new network, including the layout of the cables and poles.

We are currently consulting on the proposed design of the new network, including the layout of the cables and poles. We are also consulting on the proposed route for the new network and the locations of the new substations.















## APPENDIX G: PUBLIC CONSULTATION EVENT 2 NEWSPAPER ADVERTS

# SNP lacking 'will' to reform taxation

BY NEIL POORAN

A council tax revaluation for homes in Scotland is needed soon to meet child poverty targets, an advisory commission has said.

The Poverty and Inequality Commission says it is one of a series of measures needed to improve the tax system.

The commission was set up in 2017 by the Child Poverty (Scotland) Act to advise the government on measures to improve the lives of the worst off in the country and close the gap between the richest and poorest.

In a report released yesterday, it recommended bringing wealth as well as

income into the scope of taxation, as part of a long-term solution to putting public finances on a sustainable footing.

Currently, council tax is based on property values from 1991 and critics say it has a regressive effect, leading to poorer people paying more.

The commission's report praised the "progressive" Scottish income tax system, which has separate bands to the rest of the UK.

However, commissioner Alex Cobham said further action on tax is needed if ambitious targets on reducing poverty by 2030 are to be met.

Mr Cobham, an economist who is also chief

executive of the Tax Justice Network, said: "There's no question that this is technically the right thing to do. What's been lacking is the political will.

"I think we're at a point now where if the Scottish Government were to decide not to do this, because it is politically difficult, they're effectively deciding to miss their own child poverty targets."

He said it is important to start this process in the upcoming Scottish Budget, as well as ensuring those on lower incomes do not suffer as a result.

Mr Cobham said: "It is more than feasible, I think it's necessary." The report says the government

should ensure all land and property is properly registered, and work on a replacement for council tax should start immediately.

Ahead of the next Scottish Budget, First Minister Humza Yousaf has said "difficult decisions" on tax will need to be made.

Responding to the commission's recommendations, Deputy First Minister Shona Robison said: "I welcome this report.

"A decade of austerity, economic mismanagement by the UK Government, and a hard Brexit have all contributed to one of the most challenging financial situations since devolution."



## Kayaker's Arctic roll

Adventurer Mark Agnew, from Edinburgh, has achieved two world records by kayaking the Arctic Ocean's treacherous Northwest Passage. It took Mark three months to complete the expedition, during which he had to deal with waves as big as 15ft high, becoming perilously trapped in ice and coming face to face with a polar bear.



Scottish & Southern  
Electricity Networks

TRANSMISSION

## West of Beaulay Asset Replacement projects Glen Strathfarrar VISTA

### Information and consultation events

SSEN Transmission are holding public events for the West of Beaulay Asset Replacement projects required at Deanie, Culligran, Aigas and Kilmorack following initial consultations throughout 2022. All have ageing assets (approximately 60 years old), which need to be replaced to meet modern standards and to provide reliability of supply. These events will detail our final proposals for Culligran and Deanie sites as part of the statutory Pre-Application Consultation (PAC) which is required for major planning applications.

We will also introduce, consult and seek feedback on new selected sites for Aigas and Kilmorack following public feedback provided last year.

In addition, the project team will be sharing proposals regarding our Glen Strathfarrar VISTA (Visual impact of Scottish Transmission Assets) project, which would see around 4km of the existing 132kV overhead line in the area undergrounded from the new Deanie substation.

The project team will be in attendance to answer any questions and discuss the details of these proposed projects during our drop-in public events, where we will welcome your feedback on our proposals.

If you have any questions, please do not hesitate to contact the Community Liaison Manager:

**Sally Cooper**

Community Liaison Manager, 10 Henderson Road, Inverness, IV1 1SN (Return address)

📧 [sally.cooper@sse.com](mailto:sally.cooper@sse.com) 📱 SSEN Community 📞 +44 (0) 7918 470281 🐦 @SSETransmission

The public events will be taking place on:

**Monday 23 October,**  
5pm - 8pm

Cannich Hall, IV4 7LJ

**Tuesday 24 October,**  
11am - 1pm

Cannich Hall, IV4 7LJ

**Wednesday 25 October,**  
2pm - 7pm

Kilmorack Hall, IV4 7AQ



Visit the project website by scanning the QR code or by using the following URL:

<https://bit.ly/3EXOrmU>



# Paintball attacker must pay victims

BY JOANNE WARNOCK

An Elgin man who opened fire on a group of children with a paintball gun in revenge for them playing knock-door-run has been ordered to pay his young victims' compensation.

Joe Taylor, 29, admitted the "gangster-style" attack on three youngsters - two 12-year-old boys and an eight-year-old girl - and now has 28 days to pay each of them £250.

They had been playing knock-door-run on January 20 when they turned up at his home.

As revenge, he chased after the children in his car before cornering them in a car park, where he then

opened fire with his paintball gun, leaving them "covered in bruises" and terrified.

Last month Taylor agreed to a late plea bargain and admitted to three of the four charges against him.

The mum of one of the boys, who cannot be named for legal reasons, had said she was relieved her son did not have to give evidence as part of a trial.

She said the group had been "innocently" playing knock-door-run, but events took a turn for the worse after they knocked on the door of Taylor's home in the town's Bain Avenue.

She said: "Our son admits he did kick the door, but he went back to apologise

when he saw how angry he was."

However, the apology was not accepted and Taylor got in to his car and began chasing the children.

"The kids made a run for it," the mum explained.

"But he managed to corner them in a car park.

"He rolled his window down and opened fire with the paintball gun.

"At first, they did not know it was a paintball gun - they were all terrified. He showed no remorse at all.

"We are relieved now that they didn't have to give evidence - but we have had this worry and anxiety thinking they would have to."

She said she and the

mother of one of the other boys went round to Taylor's house to confront him.

She said: "We asked him if he had shot at our kids, and he just laughed.

"He showed no remorse at all."

The parents then contacted the police to report the incident.

"They weren't hurting anyone," she went on.

"I'm just so relieved that it didn't get dragged through the court - the whole thing has just been very traumatic."

Sheriff Fleetwood sentenced Taylor to a compensation order to pay £250 to each of the three children and gave him 28 days in which to do so.



'NO REMORSE': Joe Taylor outside the court.



Scottish & Southern  
Electricity Networks

TRANSMISSION

## West of Beaulay Asset Replacement projects Glen Strathfarrar VISTA

### Information and consultation events

SSEN Transmission are holding public events for the West of Beaulay Asset Replacement projects required at Deanie, Culligran, Aigas and Kilmorack following initial consultations throughout 2022. All have ageing assets (approximately 60 years old), which need to be replaced to meet modern standards and to provide reliability of supply. These events will detail our final proposals for Culligran and Deanie sites as part of the statutory Pre-Application Consultation (PAC) which is required for major planning applications.

We will also introduce, consult and seek feedback on new selected sites for Aigas and Kilmorack following public feedback provided last year.

In addition, the project team will be sharing proposals regarding our Glen Strathfarrar VISTA (Visual impact of Scottish Transmission Assets) project, which would see around 4km of the existing 132kV overhead line in the area undergrounded from the new Deanie substation.

The project team will be in attendance to answer any questions and discuss the details of these proposed projects during our drop-in public events, where we will welcome your feedback on our proposals.

If you have any questions, please do not hesitate to contact the Community Liaison Manager:

**Sally Cooper**

Community Liaison Manager, 10 Henderson Road, Inverness, IV1 1SN (Return address)

✉ sally.cooper@sse.com    🌐 SSEN Community    ☎ +44 (0) 7918 470281    🐦 @SSETransmission

The public events will be taking place on:

**Monday 23 October,**  
5pm - 8pm  
Cannich Hall, IV4 7LJ

**Tuesday 24 October,**  
11am - 1pm  
Cannich Hall, IV4 7LJ

**Wednesday 25 October,**  
2pm - 7pm  
Kilmorack Hall, IV4 7AQ



Visit the project website by scanning the QR code or by using the following URL:

<https://bit.ly/3EXOrmU>

# Notice Board

Notices	
Anniversaries	Notices
Birthdays	Off To School
Charities	Pets In Memory
Church Notices	Personal Seasons
Congratulations	Greetings
Contracts and Tenders	Public Notices
Engagements	Retirement
Father's Day	Special Messages
Graduation	Thank You
Mother's Day	Wedding Notices

## Public Notices

**The Town and Country Planning (Development Management Procedure) (Scotland) Regulations 2013 (As Amended) Regulation 7**  
**NOTICE OF PRE-APPLICATION FINAL PUBLIC EVENT**

Scottish Hydro Electric Transmission plc (the Applicant), operating and known as Scottish and Southern Electricity Networks Transmission (SSEN Transmission), hereby submits notification of pre-application consultation for replacement substation developments: referred collectively and forming part of 'West of Beaulay - Asset Replacement Projects'.

The proposed development site is located near to existing Deanie Hydro Power Station (IV47JX) (//buggy.reminder.solutions) and comprises the following:

**STANDALONE REPLACEMENT SUBSTATION INCORPORATING: A NEW TRANSFORMER BUILDING, A NEW CONTROL BUILDING, ASSOCIATED PLANT AND INFRASTRUCTURE WITH PERMANENT ACCESS AND ANCILLARY DEVELOPMENT**

A Proposal of Application Notice (PAN) was submitted to The Highland Council (THC) for this proposed development in October 2022. The PAN reference is: 22/03238/PAN.

The proposed development site is located to the west of Culligran (IV47JT) Hydro Power Station (//deflect.attention.blend) and comprises the following:

**STANDALONE REPLACEMENT SUBSTATION INCORPORATING: A NEW TRANSFORMER BUILDING, A NEW CONTROL BUILDING, ASSOCIATED PLANT AND INFRASTRUCTURE WITH PERMANENT ACCESS AND ANCILLARY DEVELOPMENT**

A Proposal of Application Notice (PAN) was submitted to The Highland Council (THC) for this proposed development in October 2022. The PAN reference is: 22/4838/PAN.

Public consultation events on these individual proposals were originally held:

- Monday 31 October 2022, 3pm - 7pm at Kilmorack Hall, IV4 7AQ
  - Tuesday 1 November 2022, 3.30pm - 6.45pm at Cannich Hall, IV4 7LJ
- Details of the final public feedback events are as follows:
- Monday 23 October 2023, 5pm - 8pm at Cannich Hall, IV4 7LJ
  - Tuesday 24 October 2023, 11am - 1pm at Cannich Hall, IV47LJ
  - Wednesday 25 October, 2pm - 7pm at Kilmorack Hall, IV47AQ

Further information may be viewed on the project website <https://www.ssen-transmission.co.uk/projects/project-map/west-of-beaulay---asset-replacement-projects/> and from Sally Cooper, Community Liaison Manager, Scottish & Southern Electricity Networks on 07918 470281, by email [sally.cooper@sse.com](mailto:sally.cooper@sse.com) or in writing to Sally Cooper, Community Liaison Manager, Scottish and Southern Electricity Networks, 10 Henderson Road, Inverness, IV1 1SN.

Please note that any comments made to the Applicant are not representations to The Highland Council (THC). There will be opportunity to make representations to the local planning authority following the submission of the separate planning applications.

Callum Petrie  
For and behalf of Scottish Hydro Electric Transmission Plc.

**Personal**

**FRIENDLY MALE**

60s, would like to meet similar very down-to-earth lady, aged 65 to 75 for time and fun together. I drive, also have my own home.

To find out more my contact number is 07497 394632.

To insert your notice in

**The Press and Journal**

Call 01224 691212

**The Press and Journal Classified**

## Public Notices

**The Town and Country Planning (Development Management Procedure) (Scotland) Regulations 2013 (As Amended) Regulation 7**  
**NOTICE OF PRE-APPLICATION CONSULTATION**

Scottish Hydro Electric Transmission plc (the Applicant), operating and known as Scottish and Southern Electricity Networks Transmission (SSEN Transmission), hereby submits notification of pre-application consultation for a proposed development relating to a required replacement substation, in association with three further substation replacement developments: referred collectively as 'West of Beaulay - Asset Replacement Projects'.

The proposed development site is located at land north of Kilmorack Hydro Power Station IV4 7AL.

A public consultation event on this proposal will be held on:

**Wednesday 25 October, 2pm - 7pm at Kilmorack Hall, IV47AQ**

Details of further consultation will be published in due course.

Further information may be viewed on the project website: <https://www.ssen-transmission.co.uk/projects/project-map/west-of-beaulay---asset-replacement-projects/>

You can submit comments on the proposals to the Applicant at this stage either at the event mentioned above, by emailing [sally.cooper@sse.com](mailto:sally.cooper@sse.com) or in writing to Sally Cooper, Community Liaison Manager, Scottish and Southern Electricity Networks, 10 Henderson Road, Inverness, IV1 1SN.

Please note that any comments made to the Applicant are not representations to The Highland Council (THC). There will be opportunity to make representations to the local planning authority following the submission of the application.

Callum Petrie  
For and behalf of Scottish Hydro Electric Transmission Plc.

# Retail Shop

## Pets and Accessories



## EXOTIC LONG HAIR PERSIAN KITTENS FOR SALE

Various colours, fully vaccinated and health checked. Health issues reduced price

Please call Nan, Tel: 07848 909950

To book your advert simply call 01224 691212

## Pets and Accessories

## COCKER SPANIEL PUPPIES

Hello to all from the old Merridean Kennels. We have had a litter of gorgeous orange and roan chocolate pups. We are looking for loving families to give them a happy life.

Phone 01467 642429 for more details.

To book your advert call 01224 691212

The Press and Journal Classified

# Travel

## Campsites and Caravan Parks

**SCOTLAND'S BEST LODGES & STATIC CARAVANS**

**PARK OPEN ALL YEAR**

FOR ALL HOLIDAY HOME SALES

VISIT: [WWW.P-R.SCOT](http://WWW.P-R.SCOT)

Or E: [stuart@p-r.scot](mailto:stuart@p-r.scot)

# Services

## General Services

**ROOF SHIELD**

- ROOFING REPAIRS FROM £49
- GUTTER CLEANING FROM £25

- SLATE & TILE REPAIRS
- GUTTERS CLEANED & REPAIRED
- GUTTERING UPVC SYSTEM INSTALLATION
- RIDGE TILE REPAIRS OR REPLACEMENT
- DRY RIDGE & DRY VERGE SYSTEM INSTALLATION
- FLAT ROOF REPAIRS OR REPLACEMENT
- ALL ASPECTS OF CEMENT WORK
- ROOF CLEANING & COLOUR COATING

**Tel: 07908 513531**

email: [roof-shield@outlook.com](mailto:roof-shield@outlook.com)

Website: [www.roof-shield.uk](http://www.roof-shield.uk)

DCTHOMSON

Inspirational magazine subscriptions

FOR ALL THE FAMILY THIS

# CHRISTMAS

**SHOP NOW OPEN!**

**SAVE 33%**

**Happy to all**

**SAVE 33%**

**FIRE FIGHT**

**SAVE 60%**

**FREEPHONE 0800 318 846**

UK only. Lines open 9am to 5pm Mon - Fri.

**ONLINE** [dcthomsonshop.co.uk/gifts](http://dcthomsonshop.co.uk/gifts)

\* Available to recipients within the UK when paying by Direct Debit. Available to new subscribers only. UK bank accounts only.

SCAN ME

## CONDITIONS OF ACCEPTANCE OF ADVERTISEMENTS

The Publishers retain full discretion as to the contents of "The Press and Journal" and reserve the full right to refuse to publish an advertisement or omit or suspend any advertisement for which an order has been accepted in every case without stating any reasons for so doing.

The Publishers shall not be liable for any error, omission or inaccuracy in published advertisements, nor do they accept any liability for any loss which the Advertiser may allege to have been caused by any such error, omission or inaccuracy.

Copy, artwork, photographic prints and other materials supplied in connection with advertisements shall be subject to the approval of the Publishers. All space will be charged at the appropriate rate prevailing at the time of publication and such rates may be altered at any time.

The Publishers reserve the right to change the classification of any advertisement accepted if in the opinion of the Publisher that advertisement has been placed in an incorrect classification.

Aberdeen Journals Ltd. and other members of the group will use your information for administration, customer services, and targeted marketing. We will not provide your details to other third parties unless required by law.

We may contact you by mail, email, telephone or fax to let you know about other products, services or promotions which may be of interest to you.

Full details of our Conditions of Acceptance can be obtained at our office:

Aberdeen Journals Ltd, YourAds, P.O. Box 43, 1 Marischal Square, Broad Street, Aberdeen AB10 1BL

The Press and Journal  
**Classified**



# The D & J

275 YEARS AS  
YOUR VOICE

MONDAY,  
OCTOBER 16, 2023  
£1.90

## JACKPOT

£200 OF  
SHOPPING  
GIFT CARDS  
TO BE WON



## Tartan Army's joy as Scots book Euros spot

See back page – plus 16 more pages of sport in Score pullout



# SNP activists demand party chiefs commit to dualled A96

## Conference set for road vote fight after indy plans backed

BY ADELE MERSON

SNP grassroots members in the north-east will tomorrow ratchet up the pressure on party chiefs over A96 dualling.

Activists in Peterhead and Elgin have joined forces to put the issue to the vote at the SNP conference in Aberdeen.

There are fears ministers are pulling back on a long-standing commitment to fully dual the deadly stretch between Aberdeen and Inverness due to the power-sharing deal with the Greens.

David Birkett, convener of the SNP's Peterhead branch, says fully dualling the A96, as well as the A9, would be "transformational" for communities.

SNP Elgin City North councillor Jérémie Fernandes said: "The commitment of the SNP is to dual the road. We want the party to affirm that position."

On the opening day of the conference yesterday, First Minister Humza Yousaf was backed by party members on his independence strategy.

They supported his motion calling for Holyrood to begin immediate negotiations with Westminster "to give democratic effect to Scotland becoming an independent country" if the party wins a majority of Scottish seats – and not a majority of votes – in the next general election.

Full coverage: Pages 10-12



## Yousaf and wife hold on to hope amid Gaza torment

First Minister Humza Yousaf embraced his wife after she spoke of her fears for her own family in Gaza and the Palestinian people.

Nadia El-Nakla, who is an SNP councillor, told of her despair over the deadly conflict between Israel and Hamas in a speech at the SNP

conference in Aberdeen yesterday.

Her Dundee-based parents are trapped in Gaza after going there to visit relatives.

She said: "What we are watching is an unimaginable horror. Every person in Gaza is waiting to die."

Full story: Pages 14&15

# Thistle

HOME IMPROVEMENTS SHOWROOM  
WOODSIDE ROAD - BRIDGE OF DON - ABERDEEN

FOR ALL YOUR HOME IMPROVEMENT NEEDS UNDER ONE ROOF - OPEN 7 DAYS A WEEK!



www.thistle.group - 01224 706 555

*[THIS PAGE IS INTENTIONALLY LEFT BLANK]*